

Shoreline Master Program Update

Draft Shoreline Environment Designations

May 19, 2010

Planning Commission Work Session

Staff - Cynthia Wilson & Molly Levitt

wilsonc@co.thurston.wa.us

levittm@co.thurston.wa.us

<http://www.co.thurston.wa.us/permitting/shoreline-master-program/index.html>

SMP Update Status

- Task 4 -Inventory, Analysis, and Characterization of Shoreline Conditions
 - First draft available on website for comment
 - Second draft under revision based on comments received from Ecology and the STAG
- **Task 5 – Shoreline Environmental Designations (SEDs) and Shoreline Regulations**
 - Focus of this work session

SMP Update Status - continued

- Task 5 – Shoreline Environmental Designations (SEDs) and Shoreline Regulations
 - SEDs similar to zoning
 - SEDs are assigned based on the existing use pattern, the biological and physical character of the shoreline, and the comprehensive plan
 - Each SED has specific shoreline policies and regulations
 - Assign an SED to each distinct segment of shoreline
 - SED assignment must assure the protection of existing shoreline ecological functions with the proposed pattern and intensity of development

Shoreline Environment Designations

- Ecology's 2003 guidelines recommend following six basic designations – TC using five of these
- Local governments can establish a different SED system, provided it is consistent with Ecology's
 - Parallel SEDs allowed
 - Critical area protections in shorelines must be consistent with CAO
- Thurston County is proposing using seven SEDs
 - Aquatic*
 - Natural*
 - Rural Conservancy*
 - Urban Conservancy*
 - Shoreline Residential*
 - Resource Conservancy
 - Mining

Thurston County Draft SEDs and their purposes

SED	Purpose
Aquatic	Protect, restore, and manage the unique characteristics and resources of the areas waterward of the ordinary high-water mark.
Natural	Protect those shoreline areas that are relatively free of human influence, and/or that include intact or minimally degraded shoreline functions intolerant of human use. Only very low intensity uses are allowed in order to maintain the ecological functions and ecosystem-wide processes.
Rural Conservancy	Provide for sustained resource use, public access, and recreational opportunities while protecting ecological functions, and conserving existing ecological, historical, and cultural resources,
Urban Conservancy	Protect and restore ecological functions of open space, floodplain and other sensitive lands where they exist in urban and developed settings, while allowing a variety of compatible uses.
Shoreline Residential	To accommodate residential development and appurtenant structures and provide appropriate public access and recreational uses in areas where medium and high density residential developments and services exist or are planned.
Resource Conservancy	To protect shoreline ecological functions in areas zoned long term forestry. To provide sustained resource use, and protect the economic base of those lands and limit incompatible uses.
Mining	To protect shoreline ecological functions in areas with mining activities within shoreline jurisdiction. To provide sustained resource use, and protect the economic base of those lands and limit incompatible uses.

General SED Assignment

- Each SED has specific criteria to inform SED assignments
- **Natural** - high quality habitat characteristics and/or minimal shoreline modification
- **Shoreline Residential** - platted and/or developed for relatively high-density residential development and showed signs of more intense modification/use
- **Resource Conservancy** - Lands designated as “forest lands of long-term significance” - Zoned Long Term Forestry
- **Mining** - Reaches that contain shorelines created by mining activity
- All other shorelands upland of the Ordinary High Water Mark received an **Urban or Rural Conservancy** designation.
- **Aquatic** - all areas waterward of ordinary high water mark
- Sometimes multiple designations per reach

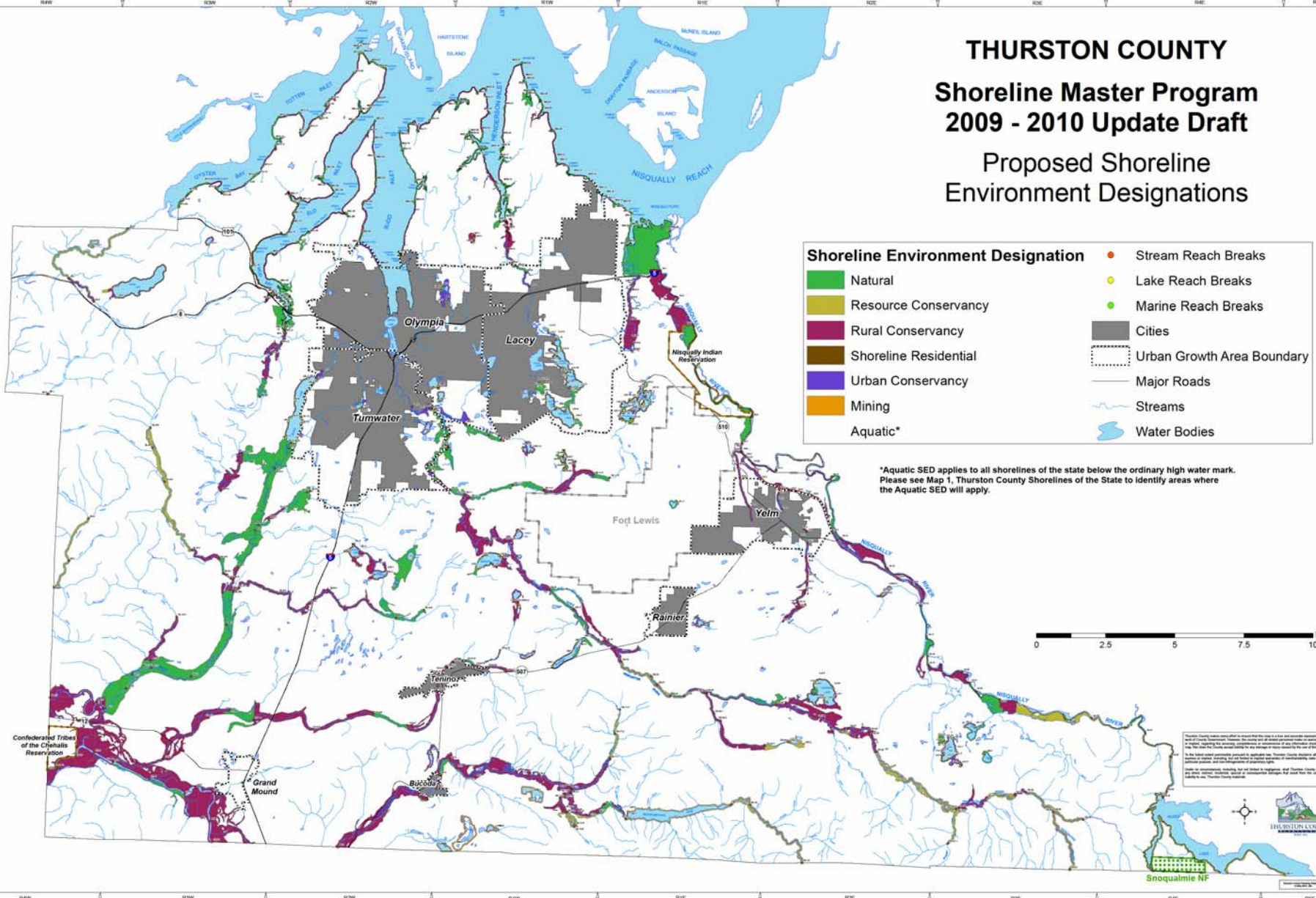
Assigning SEDs to each reach

- Draft SEDs have been assigned to each reach
 - Based on Inventory and Characterization data
 - 1st - Ecological processes and functions
 - 2nd – Existing and planned land uses
 - Maps created of Draft SEDs
 - Planning to add a “Public Preserve” SED
 - Comments requested on Draft SED assignments
 - Policies and Regulations for each SED are in progress – will be discussed later

THURSTON COUNTY

Shoreline Master Program 2009 - 2010 Update Draft

Proposed Shoreline Environment Designations



Shoreline Environment Designation

 Natural	 Stream Reach Breaks
 Resource Conservancy	 Lake Reach Breaks
 Rural Conservancy	 Marine Reach Breaks
 Shoreline Residential	 Cities
 Urban Conservancy	 Urban Growth Area Boundary
 Mining	 Major Roads
 Aquatic*	 Streams
	 Water Bodies

*Aquatic SED applies to all shorelines of the state below the ordinary high water mark. Please see Map 1, Thurston County Shorelines of the State to identify areas where the Aquatic SED will apply.



Thurston County makes every effort to ensure that this map is a true and accurate representation of the data it contains. However, the County is not responsible for any errors or omissions that may appear on this map. The County makes no warranty for any damage that may result from the use of this map. The County is not responsible for any damage that may result from the use of this map. The County is not responsible for any damage that may result from the use of this map.



Snoqualmie NF

THURSTON COUNTY

Shoreline Master Program

2009 - 2010 Update Draft

Proposed Shoreline Environment Designations

Northwest Thurston County



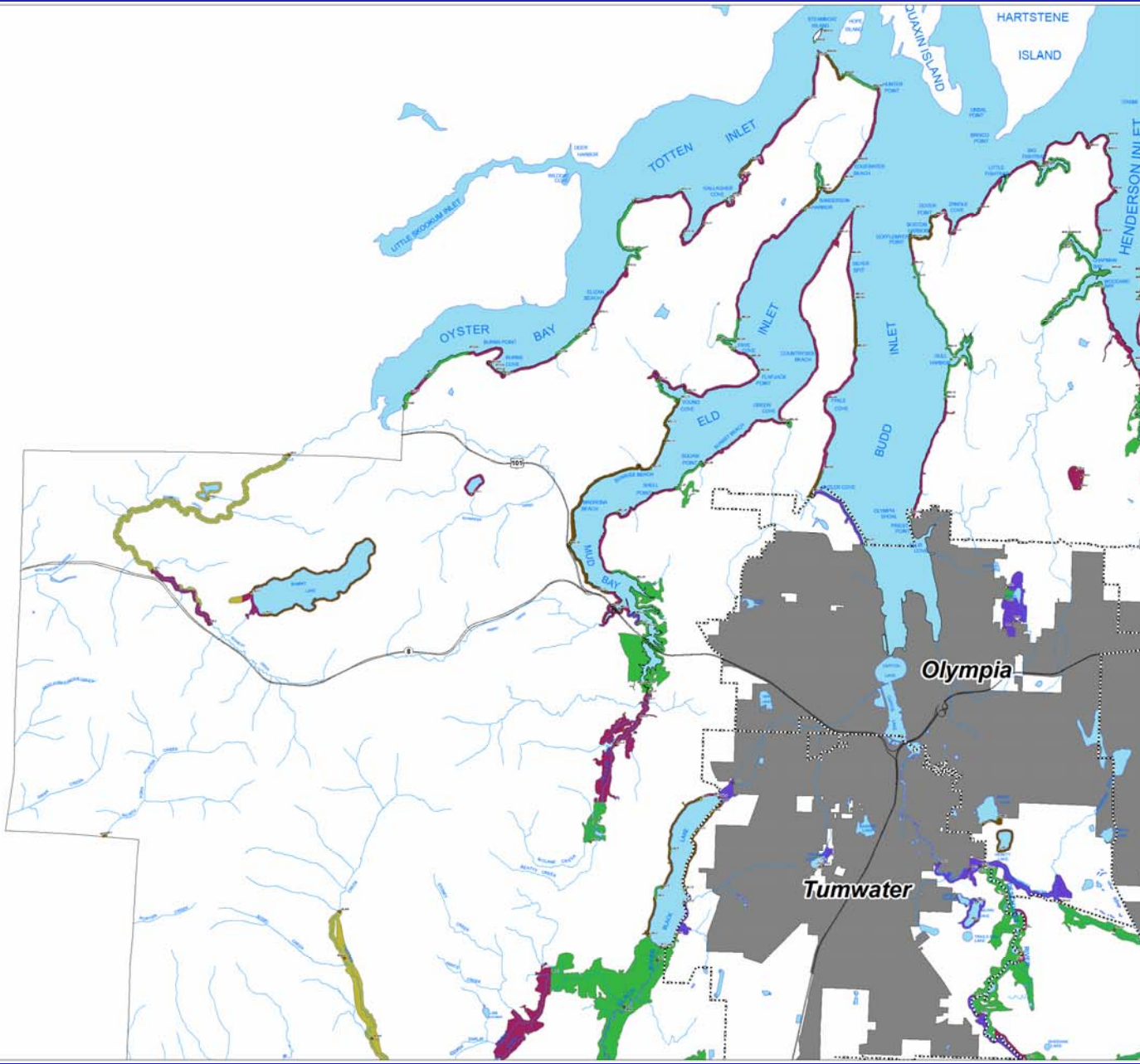
- Stream Reach Breaks
- Lake Reach Breaks
- Marine Reach Breaks
- Natural
- Resource Conservancy
- Rural Conservancy
- Shoreline Residential
- Urban Conservancy
- Mining
- Aquatic*
- Cities
- Urban Growth Area Boundary
- Major Roads
- Streams
- Water Bodies

*Aquatic SED applies to all shorelines of the state below the ordinary high water mark. Please see Map 1, Thurston County Shorelines of the State to identify areas where the Aquatic SED will apply.



Thurston County, Washington, is a public body corporate and political subdivision of the State of Washington. It is a separate and distinct political entity from the State of Washington and is not a part of the State of Washington. It is not a part of the State of Washington and is not a part of the State of Washington. It is not a part of the State of Washington and is not a part of the State of Washington.

Under no circumstances, including, but not limited to negligence, shall Thurston County be liable for any and all damages, personal or consequential damages that result from the use of, or the inability to use, this map.

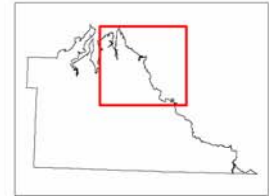


THURSTON COUNTY

Shoreline Master Program 2009 - 2010 Update Draft

Proposed Shoreline Environment Designations

Northeast Thurston County

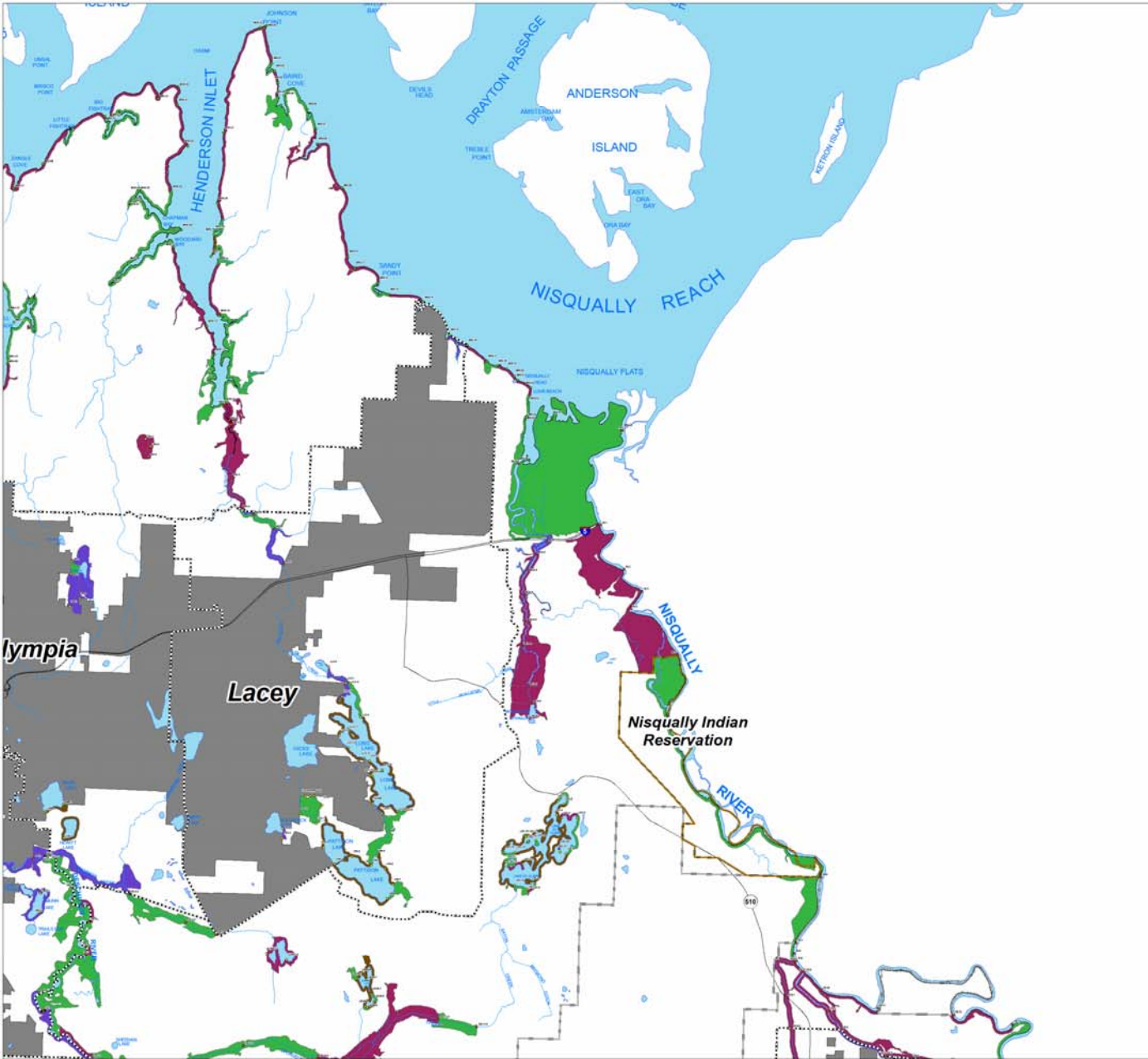


- Stream Reach Breaks
- Lake Reach Breaks
- Marine Reach Breaks
- Natural
- Resource Conservancy
- Rural Conservancy
- Shoreline Residential
- Urban Conservancy
- Mining
- Aquatic*
- Cities
- Urban Growth Area Boundary
- Major Roads
- Streams
- Water Bodies

*Aquatic SED applies to all shorelines of the state below the ordinary high water mark. Please see Map 1, Thurston County Shorelines of the State to identify areas where the Aquatic SED will apply.



Thurston County, Washington, is a public body and the map is a true and accurate representation of the land of Thurston County, Washington, as shown on the county and/or federal or state records, and is not a warranty of any kind. The County and/or federal or state records are the source of the information shown on this map. The County and/or federal or state records are the source of the information shown on this map. The County and/or federal or state records are the source of the information shown on this map.



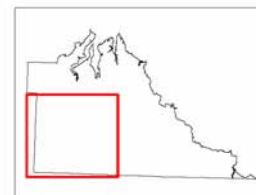
THURSTON COUNTY

Shoreline Master Program

2009 - 2010 Update Draft

Proposed Shoreline Environment Designations

Southwest Thurston County



- Stream Reach Breaks
- Lake Reach Breaks
- Marine Reach Breaks
- Natural
- Resource Conservancy
- Rural Conservancy
- Shoreline Residential
- Urban Conservancy
- Mining
- Aquatic*
- Cities
- Urban Growth Area Boundary
- Major Roads
- ~ Streams
- Water Bodies

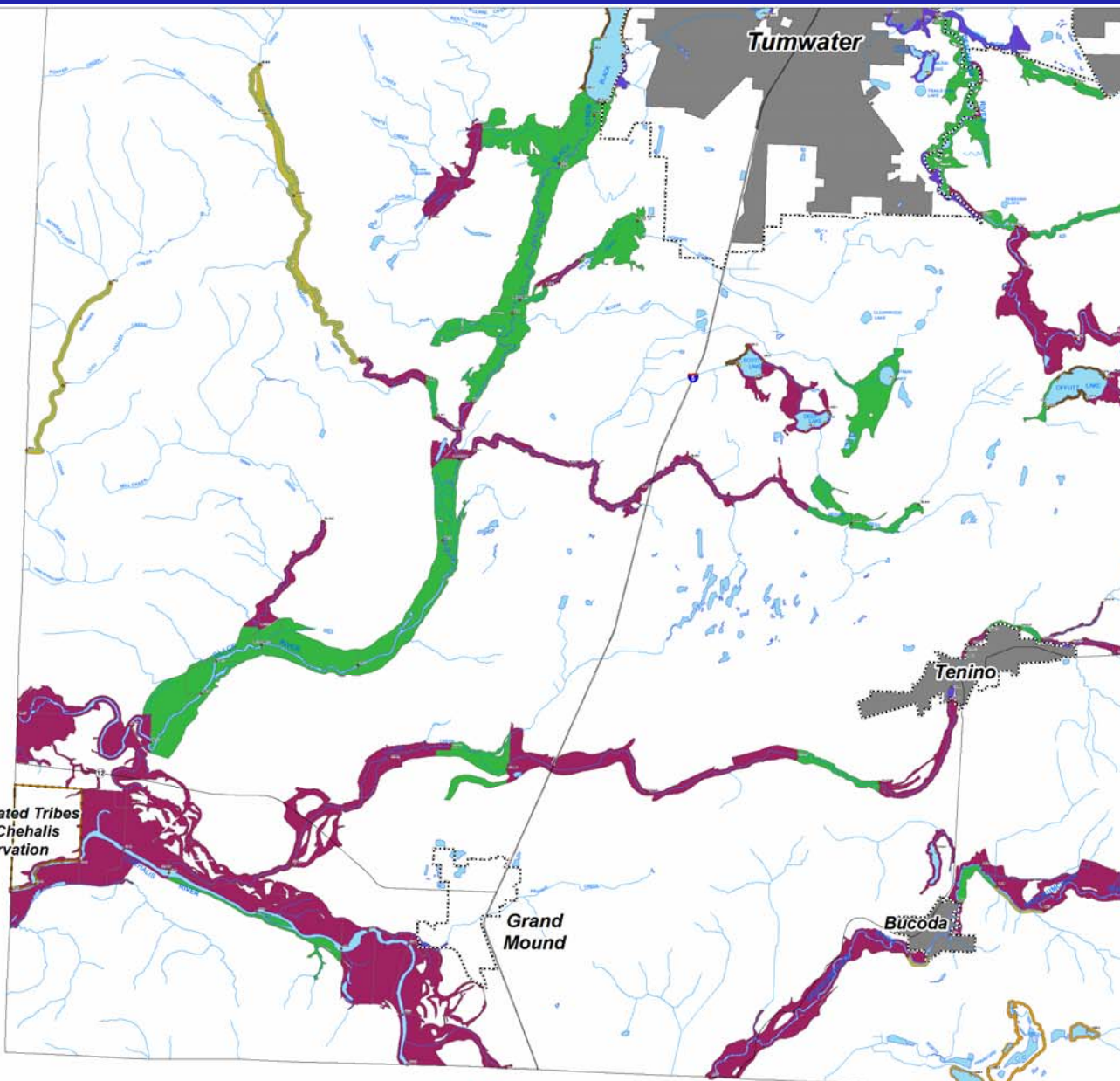
*Aquatic SED applies to all shorelines of the state below the ordinary high water mark. Please see Map 1, Thurston County Shorelines of the State to identify areas where the Aquatic SED will apply.



Thurston County, Washington, shall be deemed to warrant that this map is a true and accurate representation of the facts of County, State and Federal records, and that the County and State have no liability for any damage or injury caused by the use of this map. No liability shall be assumed for any damage or injury caused by the use of this map.



THURSTON COUNTY
2009

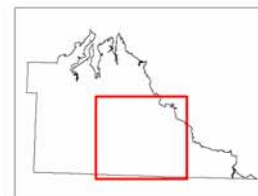


THURSTON COUNTY

Shoreline Master Program 2009 - 2010 Update Draft

Proposed Shoreline Environment Designations

South-central Thurston County



- Stream Reach Breaks
- Lake Reach Breaks
- Marine Reach Breaks
- Natural
- Resource Conservancy
- Rural Conservancy
- Shoreline Residential
- Urban Conservancy
- Mining
- Aquatic*
- Cities
- Urban Growth Area Boundary
- Major Roads
- Streams
- Water Bodies

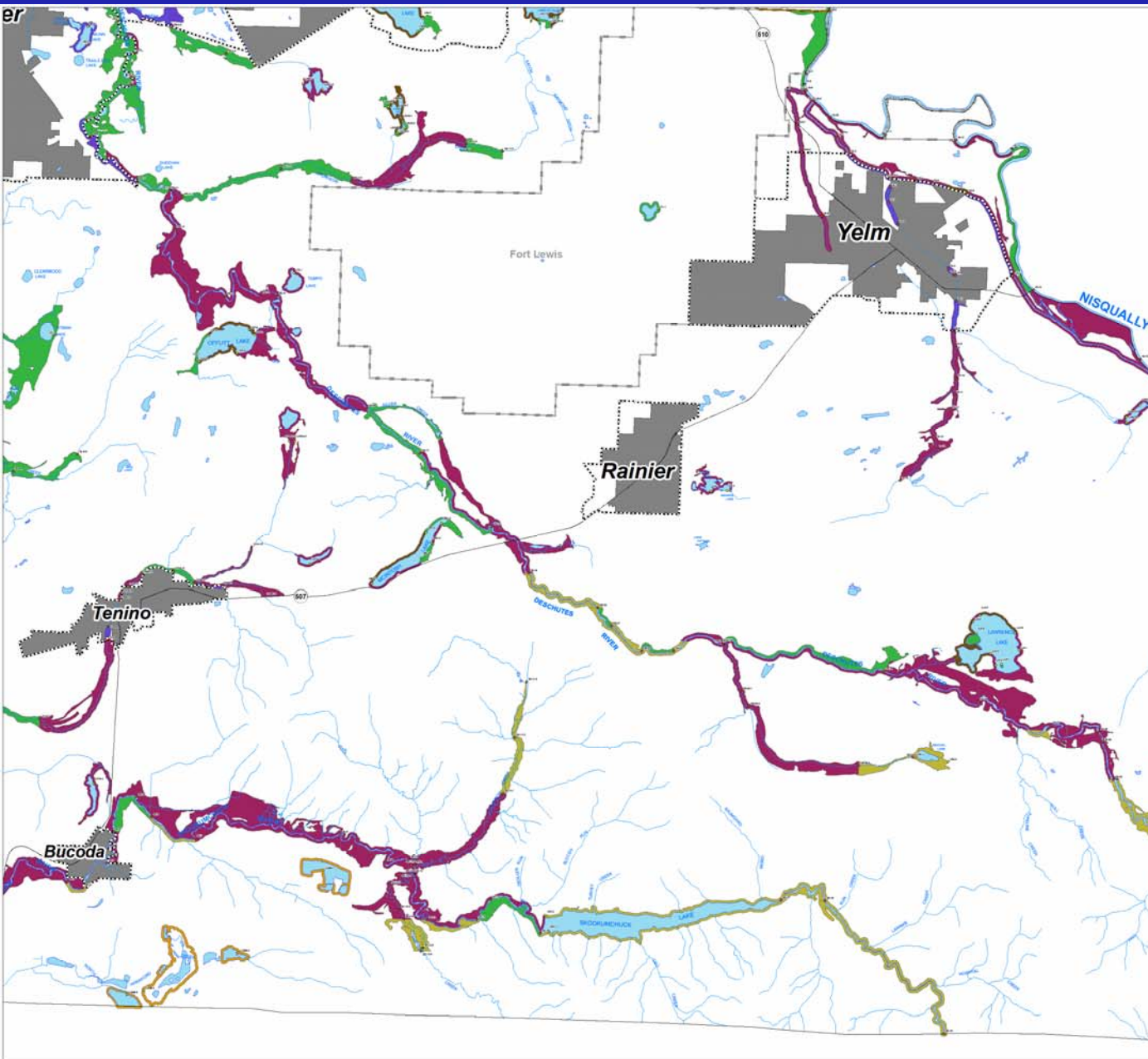
*Aquatic SED applies to all shorelines of the state below the ordinary high water mark. Please see Map 1, Thurston County Shorelines of the State to identify areas where the Aquatic SED will apply.



Thurston County, Washington, shall not be liable for negligence, shall Thurston County be liable for any other related liabilities, except for consequential damages that result from the use of, or the inability to use, Thurston County products.



THURSTON COUNTY
2009

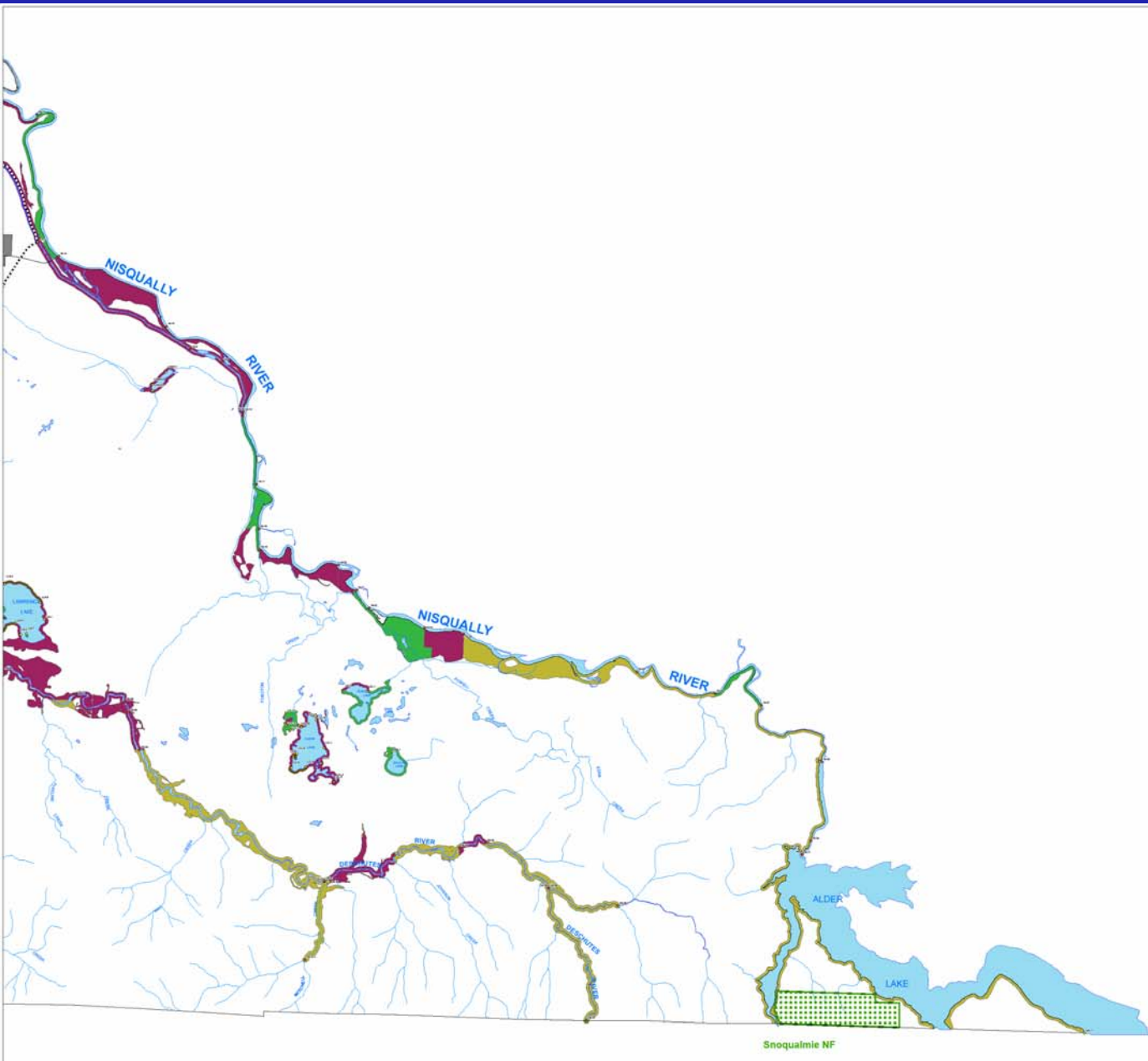
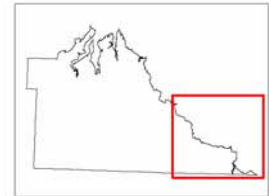


THURSTON COUNTY

Shoreline Master Program 2009 - 2010 Update Draft

Proposed Shoreline Environment Designations

Southeast Thurston County



- Stream Reach Breaks
- Lake Reach Breaks
- Marine Reach Breaks
- Natural
- Resource Conservancy
- Rural Conservancy
- Shoreline Residential
- Urban Conservancy
- Mining
- Aquatic*
- Cities
- Urban Growth Area Boundary
- Major Roads
- Streams
- Water Bodies

*Aquatic SED applies to all shorelines of the state below the ordinary high water mark. Please see Map 1, Thurston County Shorelines of the State to identify areas where the Aquatic SED will apply.



Thurston County makes every effort to ensure that this map is a true and accurate representation of the work of County Planning Services. While no warranty is made by the county and no liability is assumed for errors, omissions or inaccuracies, the county does not assume any liability for any damage or injury caused by the use of this map.

No fee shall be charged for copies of this map. Thurston County assumes no responsibility for any damage or injury caused by the use of this map.

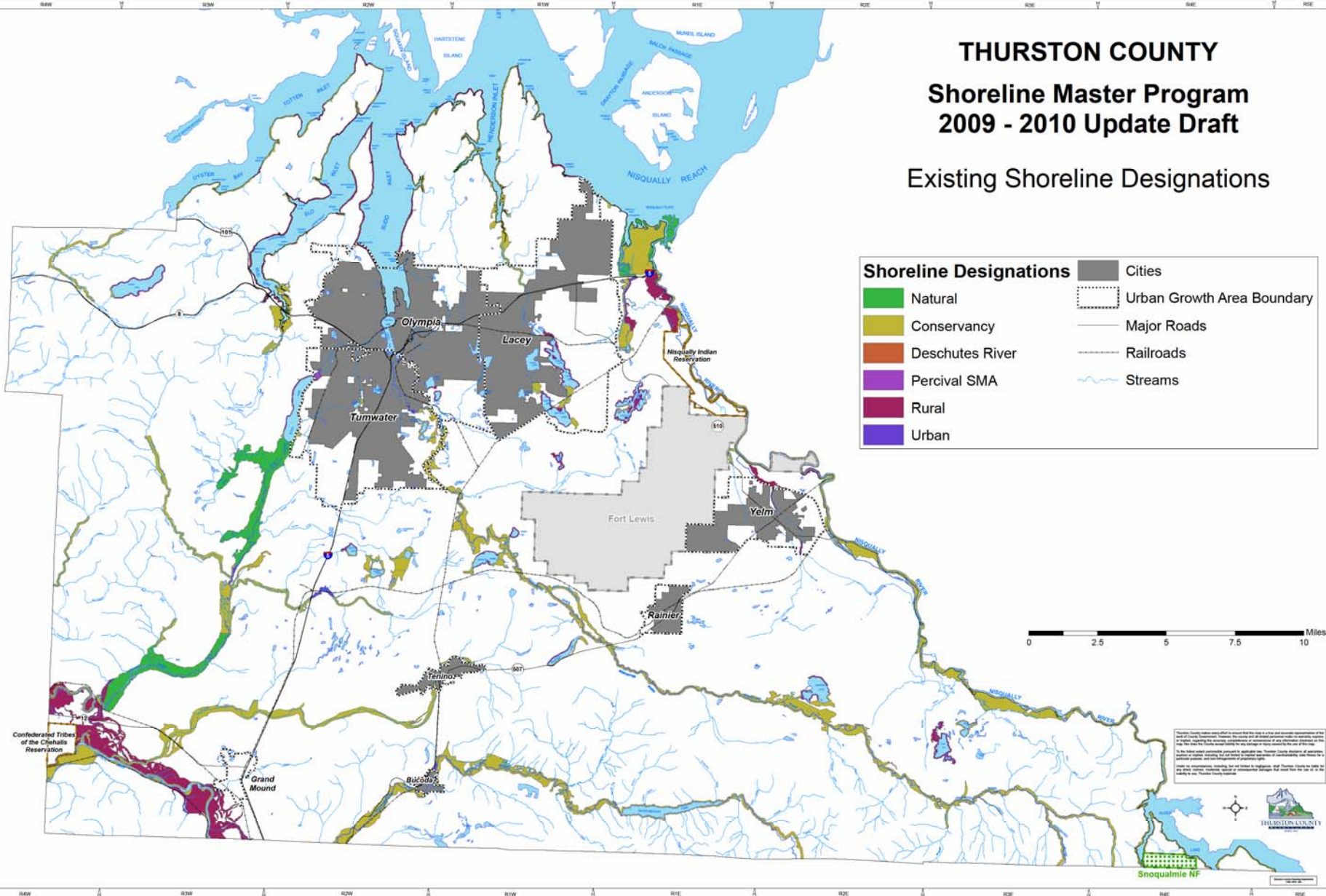
Under no circumstances, including, but not limited to negligence, shall Thurston County be liable for any direct, indirect, incidental, special or consequential damages that result from the use of, or the inability to use, this map.

THURSTON COUNTY

Shoreline Master Program

2009 - 2010 Update Draft

Existing Shoreline Designations

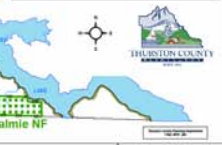


Shoreline Designations

 Natural	 Cities
 Conservancy	 Urban Growth Area Boundary
 Deschutes River	 Major Roads
 Percival SMA	 Railroads
 Rural	 Streams
 Urban	



Thurston County makes every effort to ensure that this map is a fair and accurate representation of the data it contains. However, the County does not warrant the accuracy of the information presented on this map. The County makes no liability for any damage or loss resulting from the use of this map. The County is not responsible for any errors or omissions that may appear in this map. The County is not responsible for any damage or loss resulting from the use of this map. The County is not responsible for any errors or omissions that may appear in this map.



What's Next?

- PC provides comments on Draft SEDs
 - Email questions and comments to us (in next 2 weeks?)
 - Will discuss questions and comments at next PC meeting (June 16)
- Future Planning Commission Work Sessions on:
 - Reviewing comments and questions on SEDs
 - 2nd Draft Inventory and Characterization Report
 - Draft Policies and Regulations Report