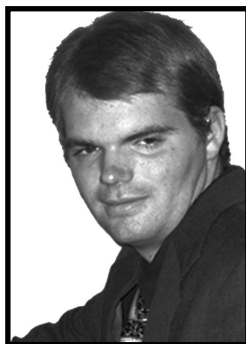


Thurston County - Legislative Districts No. 22 & No. 35

Only voters residing in District No. 22 will vote on this position.

Legislative District No. 22 - State Representative Position No. 2



The citizens of the Twenty-second district and our state need a voice in the government, one that represents them and their needs, rather than those that represent the needs and wants of a party. We need a voice that will fight for the needs of our citizens, not void their will. I will work with all lawmakers, regardless of party affiliation, to manage our environmental and financial resources in a sustainable way that benefits the people of our district.

The State, in order to maintain economic and financial

sustainability must balance its budget and set aside surplus funds for unanticipated expenses. In order to encourage investment and job creation from businesses and shopping from citizens, this must be done without raising taxes or implementing new ones.

As responsible stewards, we must become energy independent, through energy conservation, producing durable goods, and responsible management of natural resources.

Chris Ward
(States No Party Preference)

PO Box 12562, Olympia, WA 98508, (253) 235-2453, electchrisward22@yahoo.com, www.ward2010.com



Representative Sam Hunt, the official Democratic Party nominee, works hard for the 22nd District. Sam's focus is creating family wage jobs; reforming education; fixing our broken tax system by making taxes more fair and stable; making health care accessible; and streamlining state government. To improve transportation, he advocates bringing Sound Transit to Thurston County. Sam has lead the way in removing toxic chemicals, such as mercury, from our environment. Sam gained passage of legislation that's cleaning

up failed and aging septic systems along Puget Sound. He sponsored on-line voter registration and vote-by-mail laws. With Senator Fraser, Sam led the legislative effort to keep high rise development off the Olympia Isthmus and protect the Capitol's view corridor toward Puget Sound and the Olympic Mountains.

A former teacher, school board member, and state employee, he strongly supports fair treatment and pay for public employees. Sam asks for your vote.

Sam Hunt
(Prefers Democratic Party)

PO Box 2573, Olympia, WA 98507, (360) 456-0886, repsamhunt@comcast.net, www.samhunt.net



I love Thurston County. I was born and bred here. I live here because my family, friends, and all my roots are here. I will always be a vote for open government and personal privacy. I will always be a vote for truth in budgeting and transparency in fiscal matters. I will promote the business interests of living people from home over corporations based far away from us, and ensure that fraud, theft, and pollution are punished. I will seek to cut what government spends on things so we can keep jobs and

services for people. I will work for education reform that transfers resources from administration to classrooms and restores the pay awarded to teachers by voters and denied by the Legislature. I will always be a vote to protect and enhance Washington's initiative process. I will be obedient to my constituents. Please vote Justin Kover on August 17th.

Justin Kover
(Prefers Democratic Party)

2747 Pacific Avenue Ste B-23, Olympia, WA 98501, (360) 359-3863, justinkover@hotmail.com, www.justinkover.com

Legislative District No. 35 - Senator

Only voters residing in District No. 35 will vote on this position.



Why Grandma's Gotta Run 4 Senate: Nancy has been called out of retirement to run for senate because there are many fundamental problems facing our state, and no one is standing up to address them. Unable to sit by and witness the neglect, and systematic destruction of our state, she has been catapulted into the legislative ring. Nancy is a *Tea Party Conservative* who will insure that the needs of our district are met and the citizens are served. She will display what it means to serve, as an elected official. It will be a privilege

for her to serve you as she brings old school thinking to the floor of the senate. Nancy is not a "Politician" and believes there should be term limits put on the "Elite". Some of the state programs that need to be erased or dramatically reduced DSHS, CPS, and Department of Education.

Nancy (grandma) Williams
(Prefers Republican Party)

PO Box 1375, Belfair, WA 98528, (360) 205-3838, grandmasgottarun4senate@live.com



Senator Tim Sheldon is a native of the 35th District. He is known as a legislator who works with members of all political parties to find common-sense solutions to problems. Senator Sheldon has dedicated his life to public service, making him an extremely effective advocate for his district and the safety and well-being of his constituents. He regularly surveys the voters of his district, and consistently votes to uphold their views. He never sacrifices the needs of his constituents to support a party-line vote.

Senator Sheldon has worked tirelessly for State government reforms. He's a strong supporter of better local notification when high-risk sex offenders are released into our communities. He has a strong history of job creation and transportation infrastructure improvements.

In the 2010 legislative session, Senator Sheldon was present and voted on every bill. He serves with integrity and total commitment to his district.

Tim Sheldon
(Prefers Democratic Party)

PO Box 474, Hoodspout, WA 98548, (360) 490-0351, senatortimsheldon@gmail.com

Leg. District No. 35 continued on next page !!

Your Signature Matters!

Please make sure you sign the voter's affidavit on your return envelope. Your signature is one way we maintain the integrity of the elections process. Every election we have ballots that have been voted and returned which cannot be counted because voters failed to sign their affidavits.