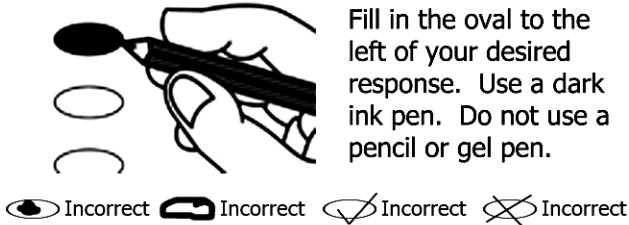
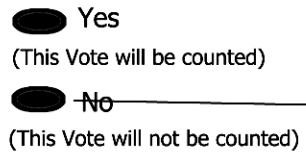


Special Election Sample Ballot
Thurston County, Washington
February 9, 2010

How To Mark Your Ballot



What To Do If You Make A Mistake



Do not erase any selection made in error. If you make a mistake, draw a line through the entire response.

If you wish to vote for another response, fill in the oval to the left of your chosen response.

More than one vote for the ballot measure will be an overvote, and no votes for that ballot measure will be counted. You do not have to vote on every measure.

Return Your Ballot: Follow the instructions on the envelopes and the ballot. Remember to sign and date the voter's affidavit on the return envelope.

You may request a replacement ballot by contacting the Thurston County Auditor's Office at (360)786-5408.

This sample ballot contains all candidates and measures certified to appear on the February 9, 2010 Special Election ballot. Be sure to follow all instructions on your regular ballot. Ballots will begin arriving on January 21, 2010. If you require a replacement ballot, please contact our office at (360) 786-5408.

City of Yelm
Proposition No. 1
Creation of Regional Fire Protection Service Authority

The Regional Fire Protection Service Authority Planning Committee has submitted to the City of Yelm, Yelm Fire District #2 and Thurston County Fire District #4 (Rainier) a Regional Fire Service Protection Authority Plan to create and fund a Regional Fire Protection Service Authority under RCW 52.26. If this Plan is approved, it will create a regional authority for fire protection and emergency medical services funded by a regular property tax, not to exceed \$1.50 per one thousand dollars of assessed value.

Should the Plan for a Regional Fire Protection Service Authority be approved:

- Yes
- No

Centralia School District No. 401L
 Proposition No. 1
 Educational Maintenance and Operations Levy

To replace an expiring levy, the Centralia School District No. 401 Board of Directors adopted Resolution #2009-20 concerning educational funding. This proposition authorizes the District to levy the following rates, on all taxable property within the District, to support the District's educational maintenance and operations:

<u>Collection Year</u>	<u>Approx. Levy Rate per \$1,000 Assessed Value</u>	<u>Levy Amount</u>
2011	\$2.03	\$4,850,000
2012	\$2.06	\$4,925,000

Should this proposition be approved:

- Levy Yes
- Levy No

Griffin School District No. 324
 Proposition No. 1
 Maintenance and Operations Levy

The Board of Directors of Griffin School District No. 324 adopted Resolution No. 09-10-04 concerning a proposition to levy property taxes. Upon the expiration of the current maintenance and operation levy, the proposition would authorize the following taxes for purposes of operation and maintenance in excess of all regular property tax levies, upon all taxable property within Griffin School District No. 324 for the District's general fund:

<u>Collection Year</u>	<u>Approximate Levy Rate per \$1,000 of Assessed Value</u>	<u>Levy Amount</u>
2011	\$1.92	\$2,119,000
2012	\$2.11	\$2,323,000

Should this proposition be approved:

- Levy Yes
- Levy No

North Thurston Public Schools
 Proposition No. 1
 Maintenance and Operations Levy

The Board of Directors of North Thurston Public Schools adopted Resolution No. 797 concerning a proposition to levy property taxes. Upon the expiration of the current maintenance and operation levy, the proposition would authorize the following taxes in excess of all regular property tax levies, upon all taxable property within the District for the District's general fund for purposes of operation and maintenance, including teaching, school supplies, athletics and activities, transportation and facilities maintenance and operations:

<u>Collection Year</u>	<u>Approximate Levy Rate per \$1,000 of Assessed Value</u>	<u>Levy Amount</u>
2011	\$2.55	\$27,500,000
2012	\$2.55	\$28,875,000

Should this proposition be approved:

- Levy Yes
- Levy No

Olympia School District No. 111
 Proposition No. 1
 Capital Projects Levy

The Board of Directors of Olympia School District No. 111 adopted Resolution No. 457 concerning a proposition for capital and technology levies. To replace an expiring levy, the proposition would authorize modernization and repair projects to District facilities, the modernization of technology and computer systems for instruction and operations, and other capital project expenditures; and authorizes the following taxes in excess of all regular property tax levies, upon all taxable property within the District:

<u>Collection Year</u>	<u>Approximate Levy Rate per \$1,000 of Assessed Value</u>	<u>Levy Amount</u>
2011	\$1.22	\$9,835,000
2012	\$1.29	\$10,770,000
2013	\$0.27	\$2,320,000
2014	\$0.26	\$2,330,000

Should this proposition be approved:

- Levy Yes
- Levy No

Rainier School District No. 307
 Proposition No. 1
 Maintenance and Operations Levy

The Board of Directors of Rainier School District No. 307 adopted Resolution No. 216 concerning a proposition to levy property taxes. Upon the expiration of the current maintenance and operation levy, the proposition would authorize the following taxes for purposes of operation and maintenance in excess of all regular property tax levies, upon all taxable property within Rainier School District No. 307 for the District's general fund:

<u>Collection Year</u>	<u>Approximate Levy Rate per \$1,000 of Assessed Value</u>	<u>Levy Amount</u>
2011	\$2.95	\$1,439,136
2012	\$2.95	\$1,439,136

Should this proposition be approved:

- Levy Yes
- Levy No

Rochester School District No. 401
 Proposition No. 1
 Maintenance and Operations Levy

The Board of Directors of Rochester School District No. 401 adopted Resolution No. 09-09 concerning a proposition to levy property taxes. Upon the expiration of the current maintenance and operation levy, the proposition would authorize the following taxes for purposes of maintenance, operations and educational programs in excess of all regular property tax levies, upon all taxable property within Rochester School District No. 401 for the District's general fund:

<u>Collection Year</u>	<u>Approximate Levy Rate per \$1,000 of Assessed Value</u>	<u>Levy Amount</u>
2011	\$2.61	\$3,388,000
2012	\$2.54	\$3,388,000

Should this proposition be approved:

- Levy Yes
- Levy No

Tenino School District No. 402
 Proposition No. 1
 Maintenance and Operations Levy

The Board of Directors of Tenino School District No. 402 adopted Resolution No. 2:2009-2010 concerning a proposition to levy property taxes. Upon the expiration of the current maintenance and operation levy, the proposition would authorize the following taxes for purposes of operation and maintenance in excess of all regular property tax levies, upon all taxable property within Tenino School District No. 402 for the District's general fund:

<u>Collection Year</u>	<u>Approximate Levy Rate per \$1,000 of Assessed Value</u>	<u>Levy Amount</u>
2011	\$2.91	\$2,746,860
2012	\$2.91	\$2,746,860

Should this proposition be approved:

- Levy Yes
- Levy No

Tumwater School District No. 33
 Proposition No. 1
 Maintenance and Operations Levy

The Board of Directors of Tumwater School District No. 33 adopted Resolution No. 05-09-10 concerning a proposition to levy property taxes. Upon the expiration of the current maintenance and operation levy, the proposition would authorize the following taxes for purposes of operation and maintenance in excess of all regular property tax levies, upon all taxable property within Tumwater School District No. 33 for the District's general fund:

<u>Collection Year</u>	<u>Approximate Levy Rate per \$1,000 of Assessed Value</u>	<u>Levy Amount</u>
2011	\$2.43	\$11,700,000
2012	\$2.43	\$12,400,000

Should this proposition be approved:

- Levy Yes
- Levy No

Fire Protection District No. 4 – Rainier
Proposition No. 1
Creation of Regional Fire Protection Service Authority

The Regional Fire Protection Service Authority Planning Committee has submitted to the City of Yelm, Yelm Fire District #2 and Thurston County Fire District #4 (Rainier) a Regional Fire Service Protection Authority Plan to create and fund a Regional Fire Protection Service Authority under RCW 52.26. If this Plan is approved, it will create a regional authority for fire protection and emergency medical services funded by a regular property tax, not to exceed \$1.50 per one thousand dollars of assessed value.

Should the Plan for a Regional Fire Protection Service Authority be approved:

- Yes
- No

Yelm Fire District
Proposition No. 1
Creation of Regional Fire Protection Service Authority

The Regional Fire Protection Service Authority Planning Committee has submitted to the City of Yelm, Yelm Fire District #2 and Thurston County Fire District #4 (Rainier) a Regional Fire Service Protection Authority Plan to create and fund a Regional Fire Protection Service Authority under RCW 52.26. If this Plan is approved, it will create a regional authority for fire protection and emergency medical services funded by a regular property tax, not to exceed \$1.50 per one thousand dollars of assessed value.

Should the Plan for a Regional Fire Protection Service Authority be approved:

- Yes
- No