

Thurston County Coroner's Office

Ten Year Compilation

The Thurston County Coroner is an elected official who, under the laws of the State of Washington and Thurston County, determines the manner and cause of death of those individuals falling under the jurisdiction of the Coroner. These deaths include those that are sudden, unexpected, violent, or suspicious. The process involves the gathering of information from several sources— observations made at the scene of death; interviews with relatives, friends, health care professionals, law enforcement personnel, witnesses and others about circumstances surrounding the death; and examination of the body externally and internally, including microscopic and toxicological examination. With this information the Coroner can accurately certify the manner and cause of death.

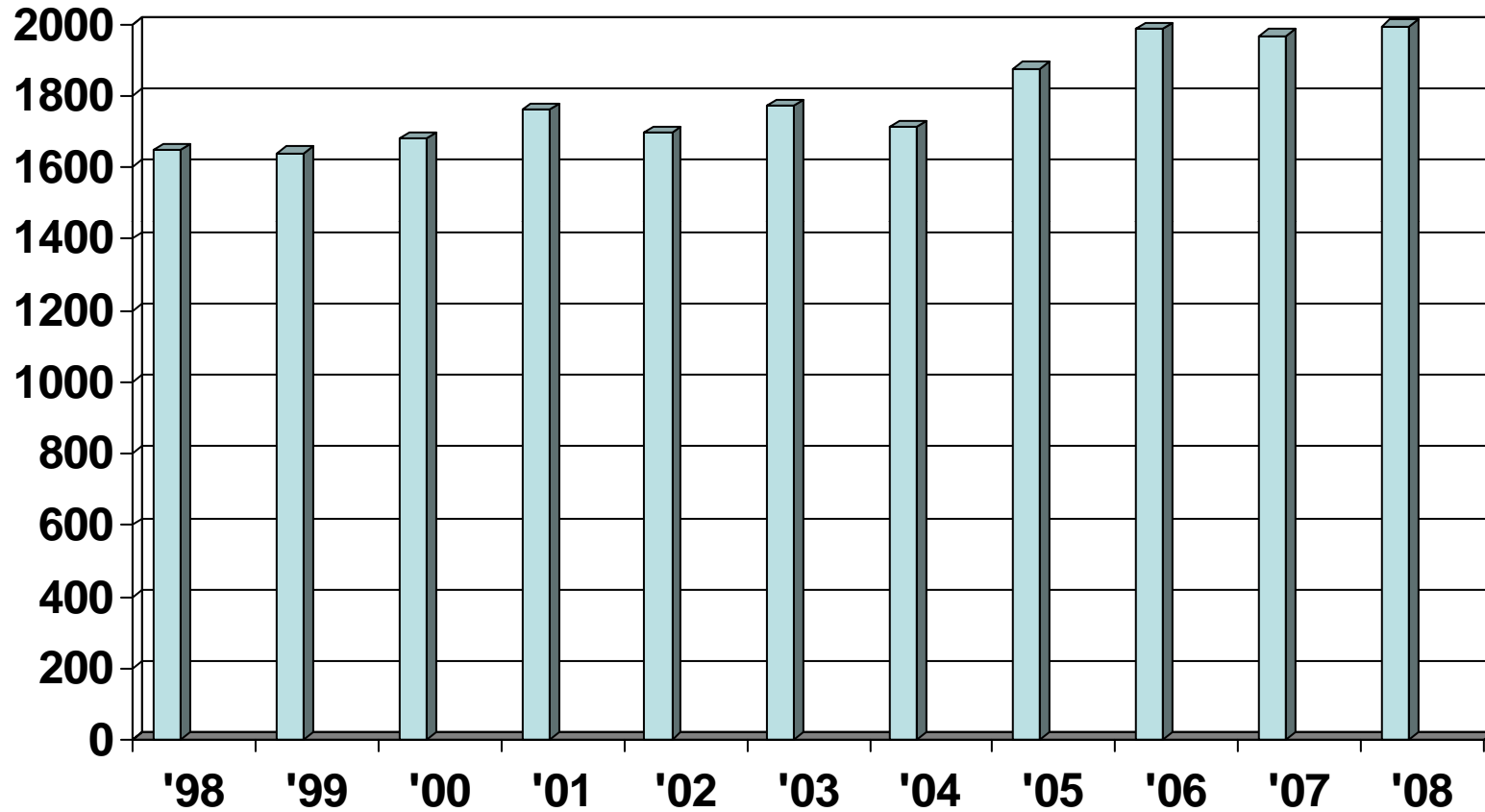
The Coroner's Office is very sensitive to the tragedy of sudden and unexpected death, recognizing that each death represents the loss of an individual deeply missed by loved ones and friends. A complete and thorough investigation provides answers to immediate questions, as well as those that may arise later. The investigation may also expedite insurance claims, social security benefits and estate settlements.

The following graphs give examples of the constant increase and fluctuations during the past 10 years in Thurston County. **JA's** are where **J**urisdiction is **A**ssumed by our deputies and a thorough investigation takes place. JA's are broken down into 13 categories including Homicides, Traffics, Suicides, Industrial (work related), Drowning, Fire, Aircraft, Drugs (accidental overdoses), SIDS, Miscellaneous (not belonging in any other category), Naturals, Undetermined and Falls (generally pertaining to ground-level falls by the elderly). **NJA's** are when **No J**urisdiction is **A**ssumed. However, every death in the county is reviewed by our office to determine it's jurisdictional status.

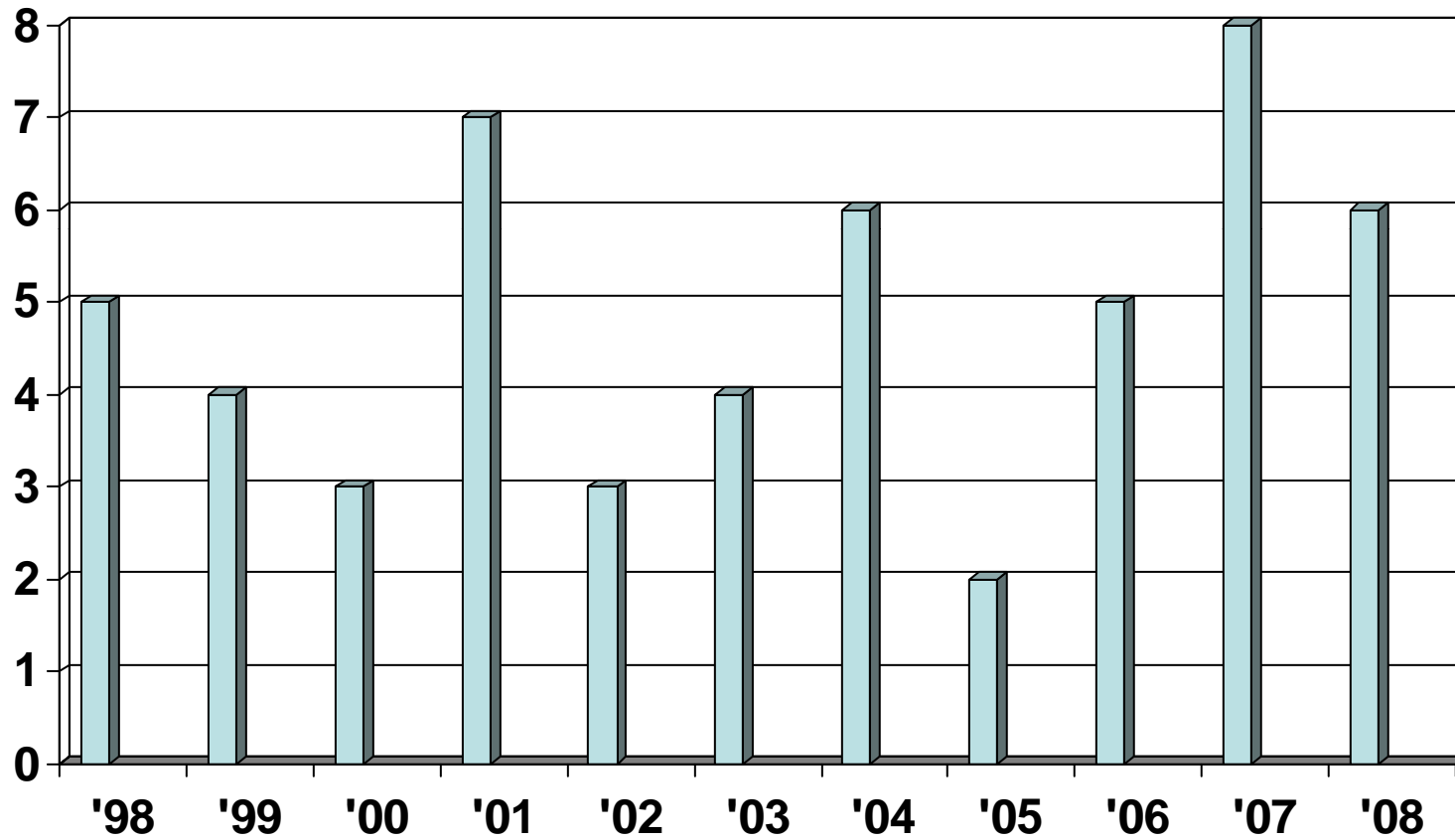
The Thurston County Coroner's Office is a small but extremely efficient staff that work together constantly to provide our county with thorough death investigations and answers to friends and family in grief. Their dedication helps in serving our community at times when needed most.

| | 1998 | 1999 | 2000 | 2001 | 2002 | 2003 | 2004 | 2005 | 2006 | 2007 | 2008 |
|--------------|-------------|-------------|-------------|-------------|-------------|-------------|-------------|-------------|-------------|-------------|-------------|
| JA's | | | | | | | | | | | |
| Homicide | 5 | 4 | 3 | 7 | 3 | 4 | 6 | 2 | 5 | 8 | 6 |
| Traffic | 21 | 26 | 21 | 26 | 21 | 26 | 19 | 25 | 28 | 20 | 22 |
| Suicide | 33 | 30 | 28 | 24 | 26 | 36 | 29 | 21 | 27 | 32 | 39 |
| Industrial | 0 | 1 | 3 | 0 | 0 | 2 | 1 | 3 | 1 | 3 | 1 |
| Drowning | 3 | 1 | 4 | 3 | 3 | 2 | 4 | 4 | 2 | 1 | 6 |
| Fire | 3 | 0 | 2 | 2 | 2 | 2 | 1 | 0 | 4 | 1 | 1 |
| Aircraft | 0 | 0 | 1 | 1 | 0 | 2 | 2 | 0 | 0 | 0 | 0 |
| Falls | 27 | 31 | 34 | 40 | 35 | 37 | 28 | 38 | 35 | 58 | 67 |
| Drug | 8 | 7 | 10 | 8 | 16 | 18 | 15 | 20 | 28 | 29 | 26 |
| SIDS | 2 | 2 | 1 | 1 | 2 | 1 | 2 | 1 | 2 | 3 | 1 |
| Misc. | 4 | 16 | 7 | 10 | 9 | 11 | 12 | 18 | 12 | 16 | 14 |
| Natural | 93 | 87 | 74 | 93 | 73 | 63 | 72 | 77 | 69 | 86 | 121 |
| Undet. | 0 | 1 | 1 | 1 | 1 | 6 | 7 | 7 | 6 | 4 | 6 |
| Total | 199 | 206 | 189 | 216 | 191 | 210 | 198 | 216 | 219 | 261 | 310 |
| NJA's | | | | | | | | | | | |
| | 1449 | 1434 | 1491 | 1544 | 1504 | 1561 | 1514 | 1658 | 1767 | 1706 | 1685 |
| TOTAL | 1648 | 1640 | 1680 | 1760 | 1695 | 1771 | 1712 | 1874 | 1986 | 1967 | 1995 |

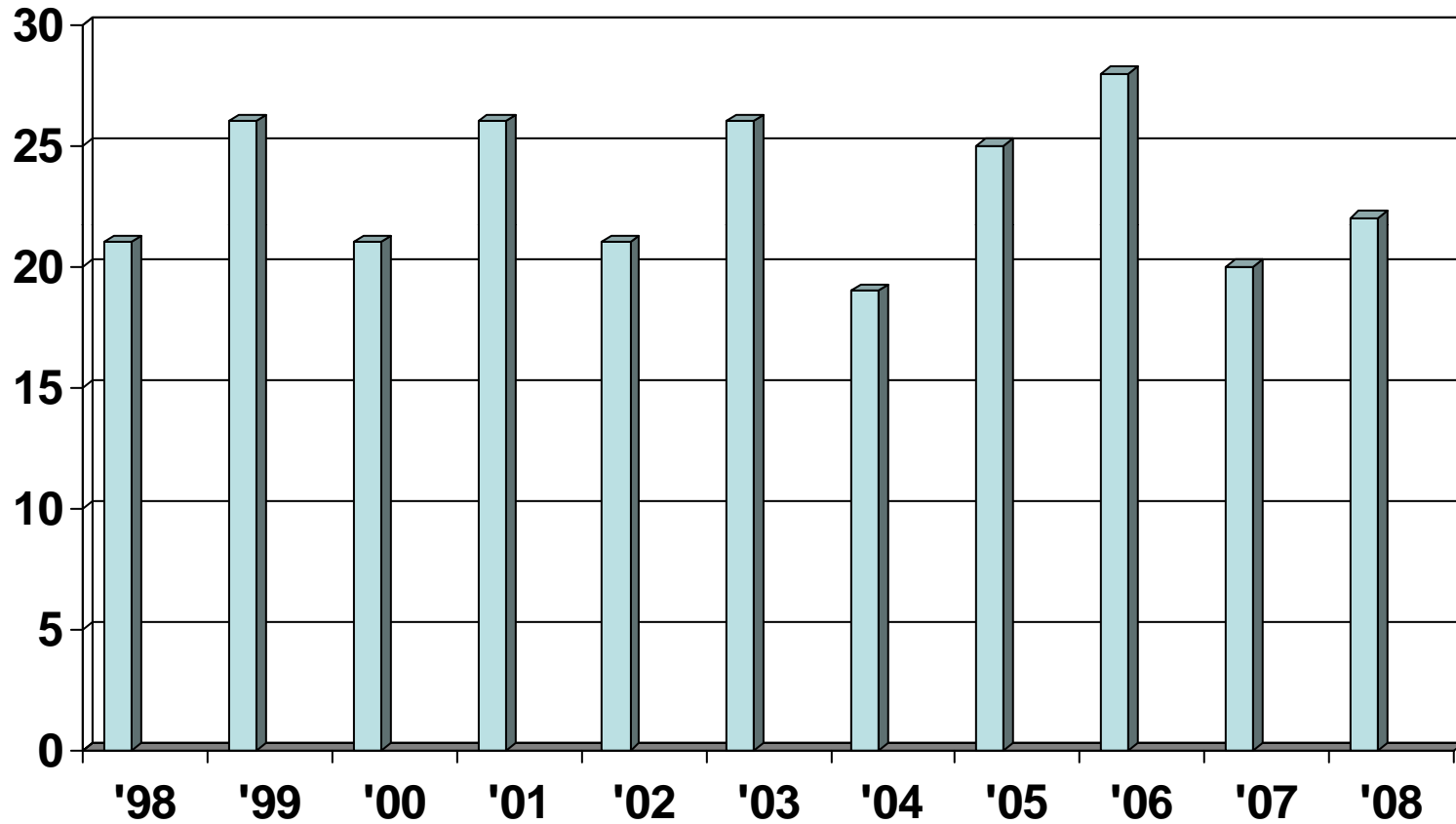
Total County Deaths



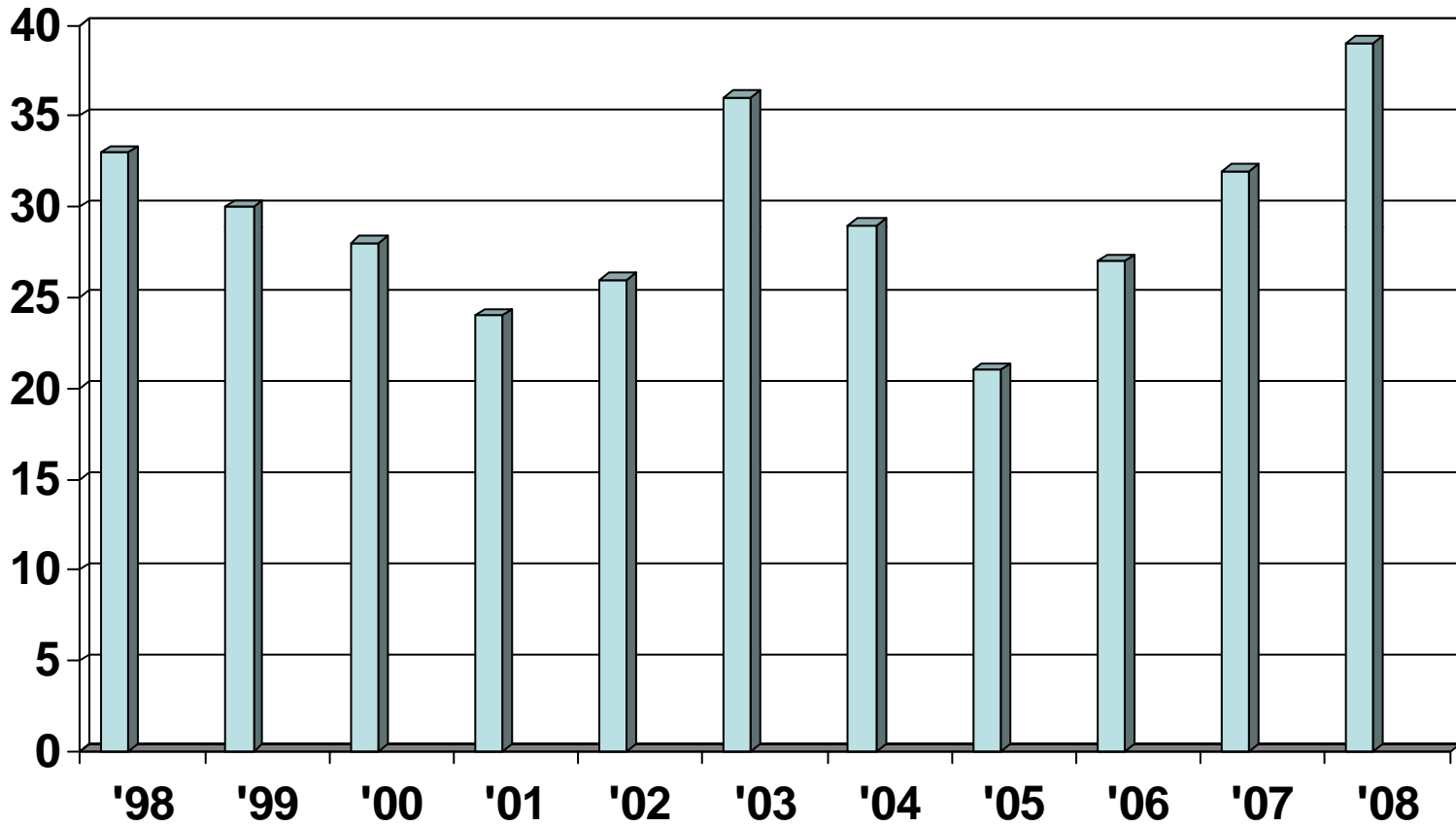
Homicides



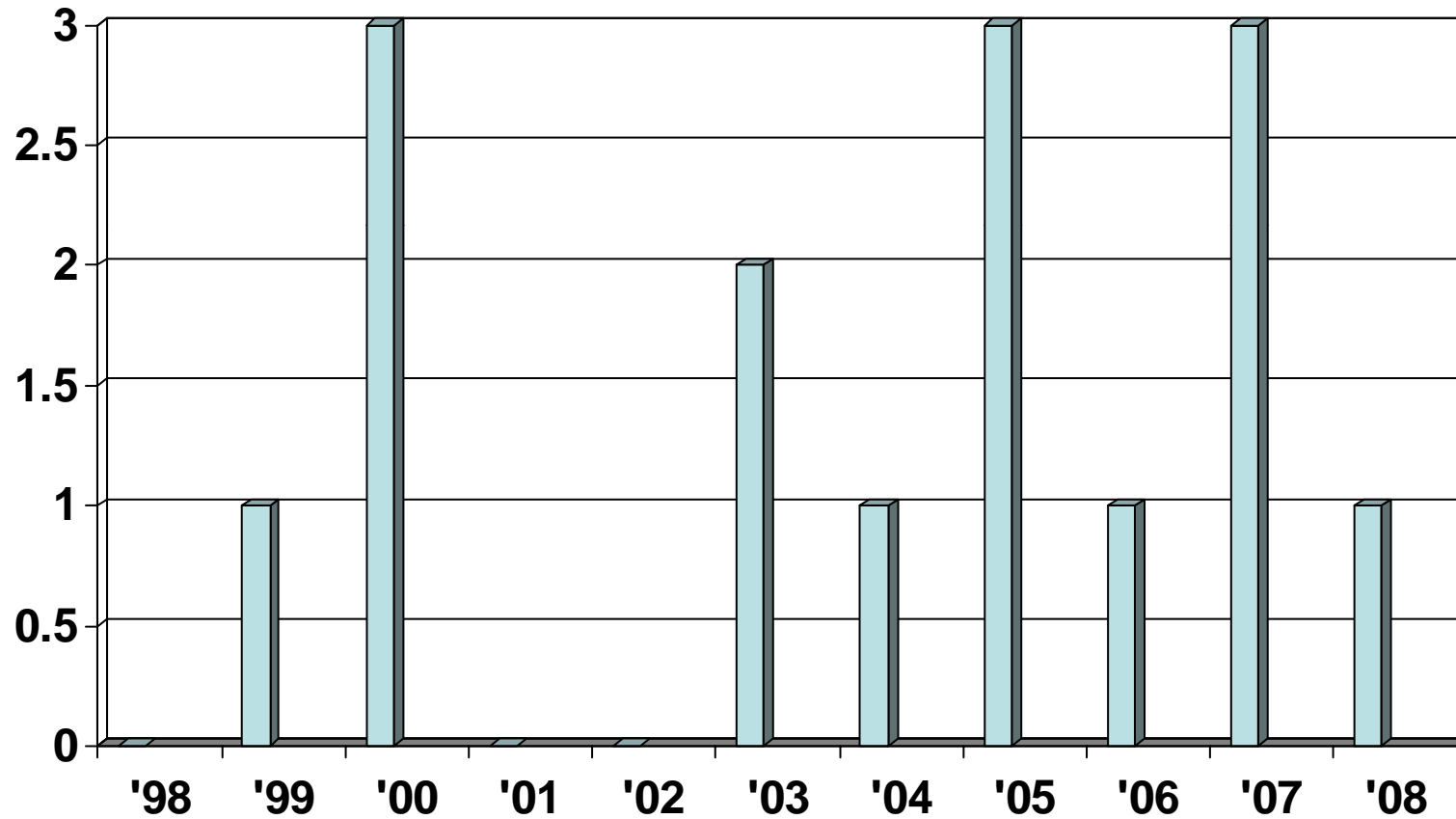
Traffic Related Deaths



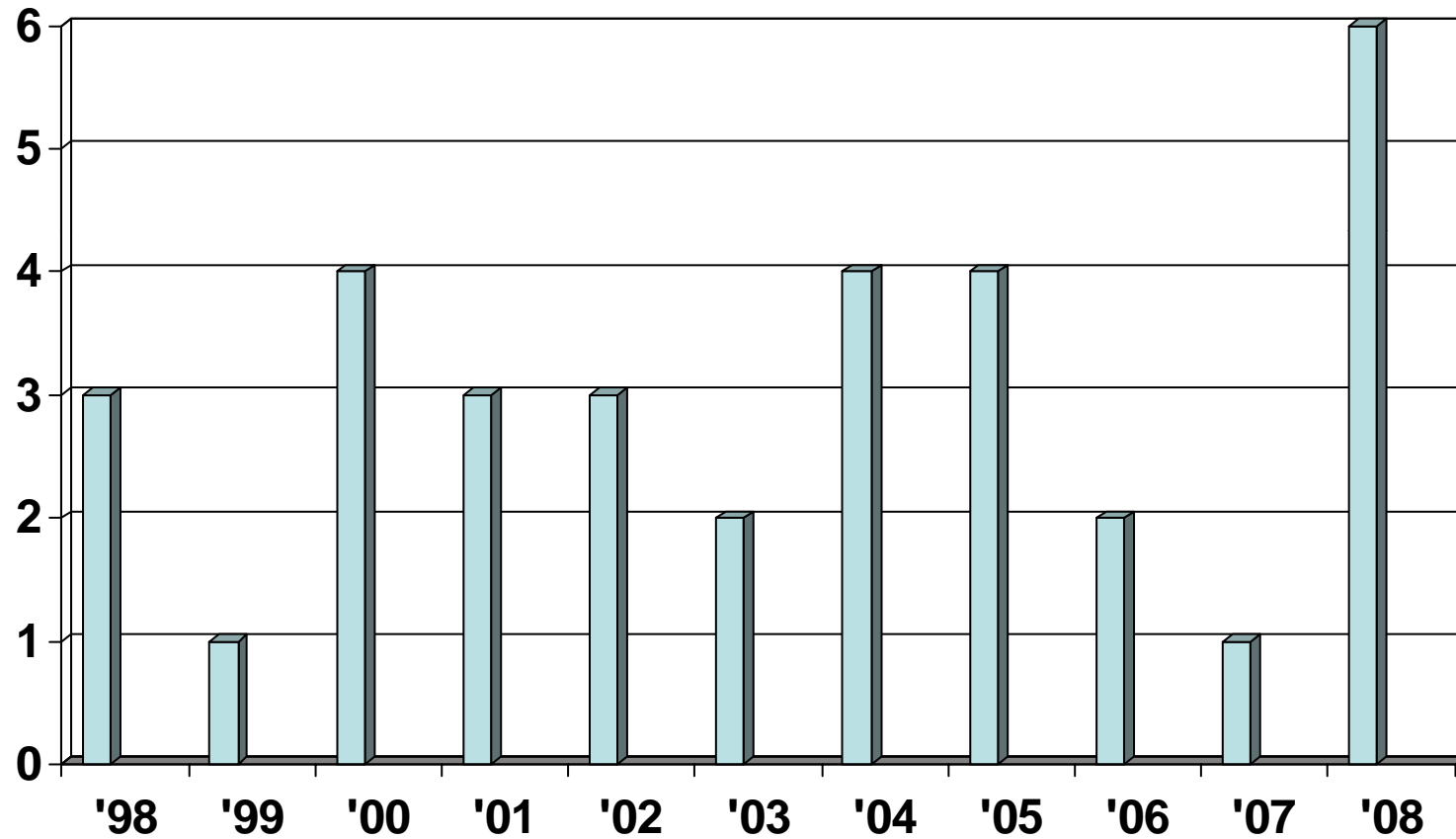
Suicides



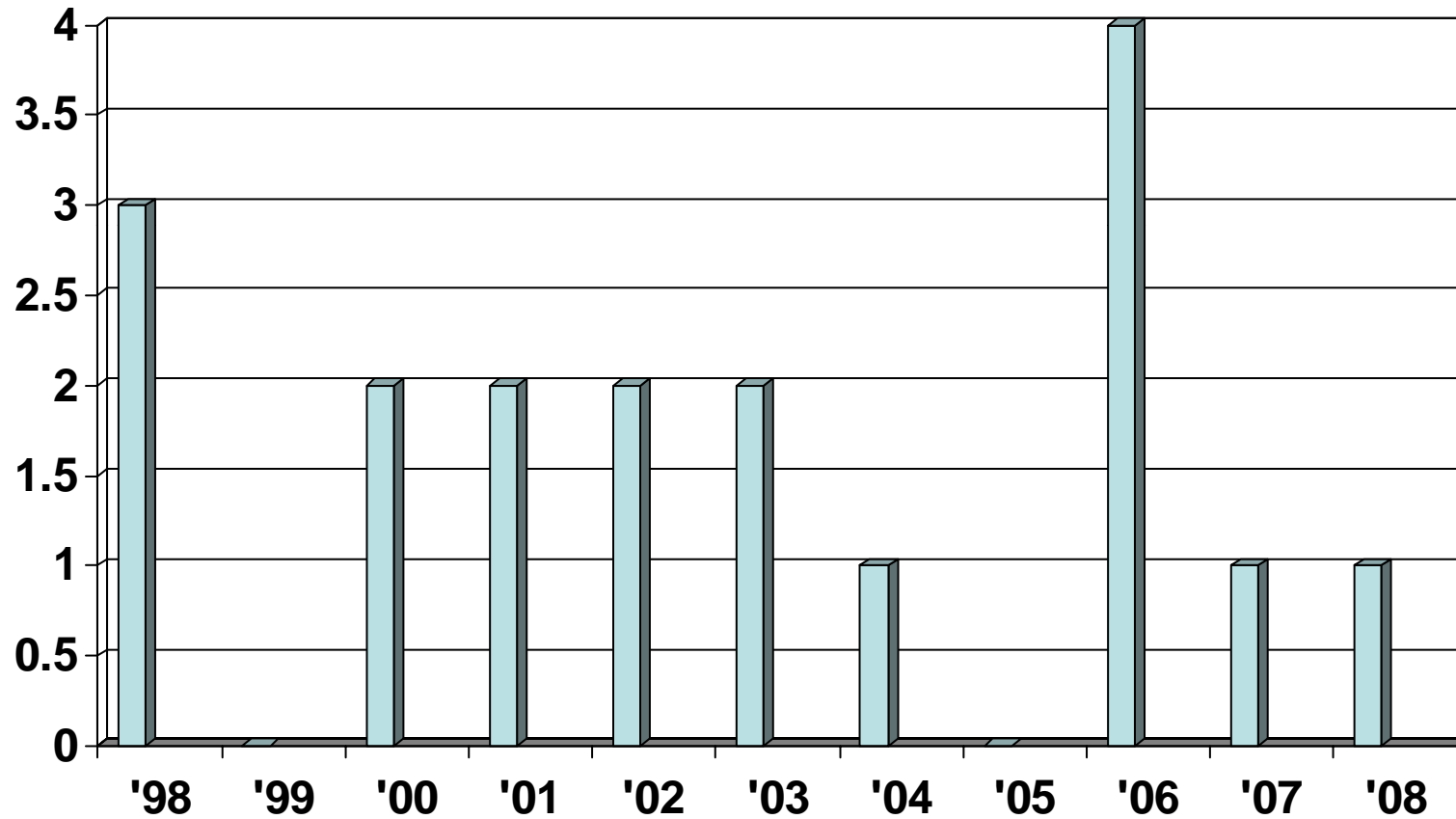
Industrial Related Deaths



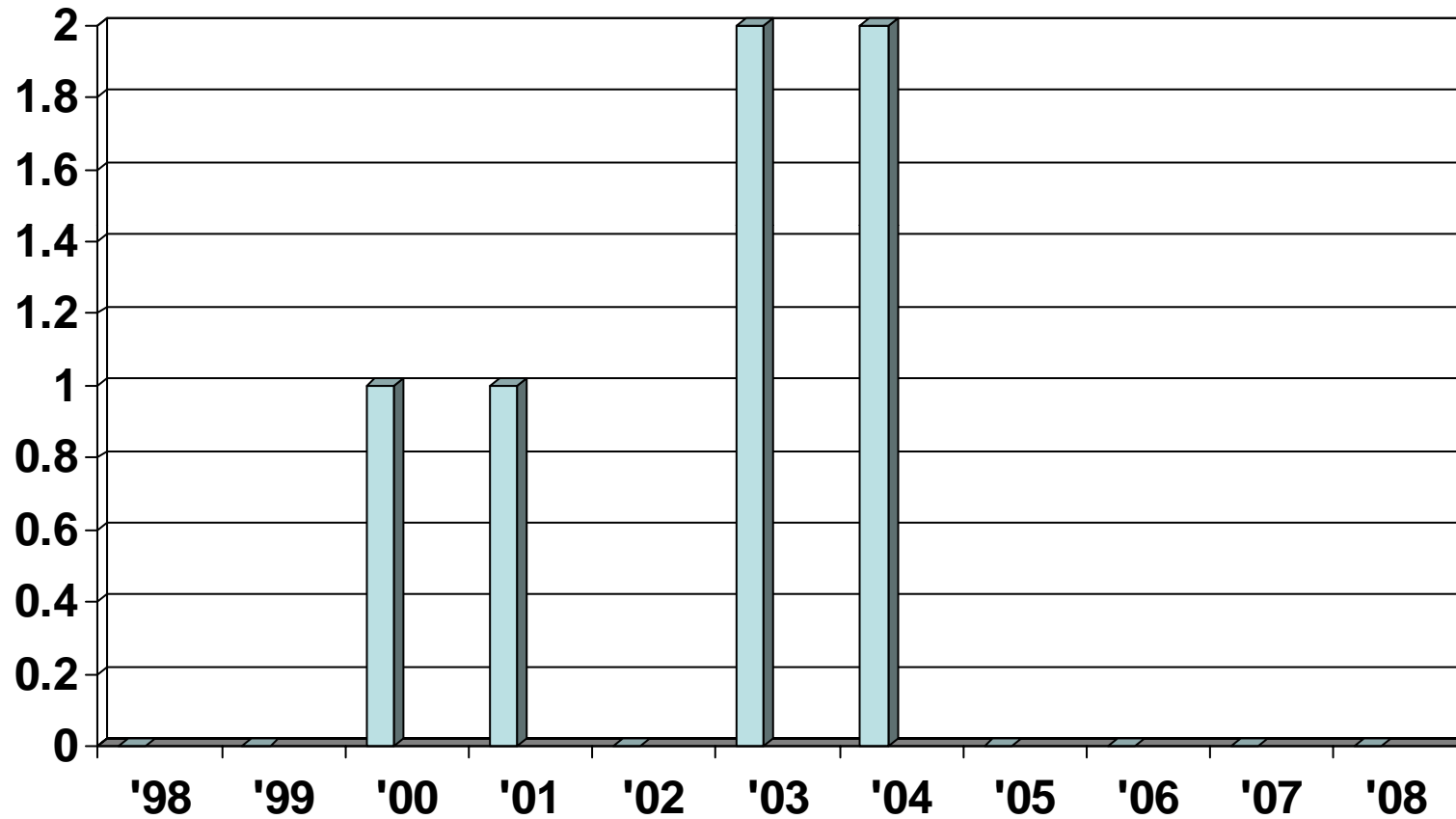
Drowning Deaths



Fire Deaths

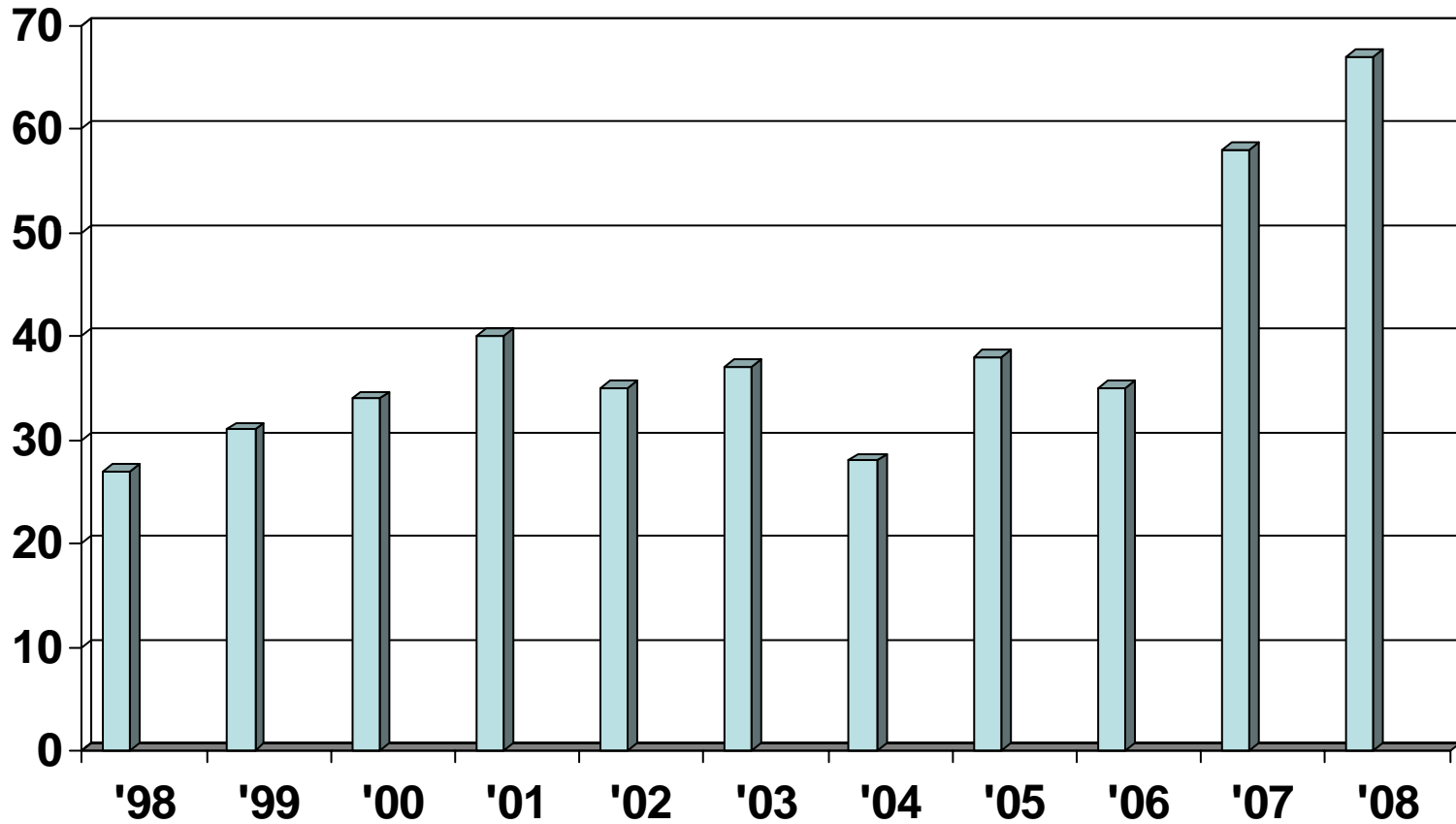


Aircraft Deaths

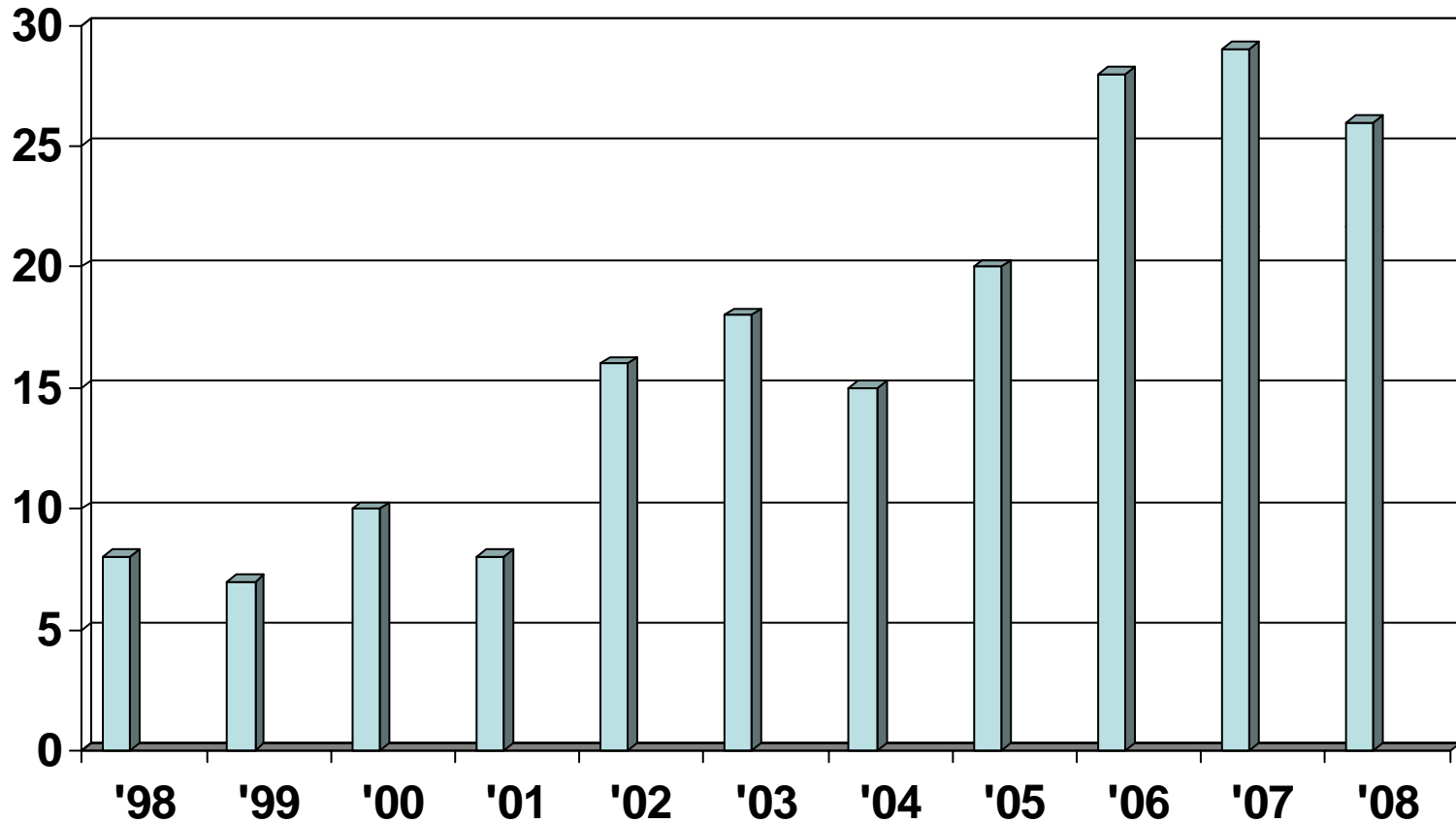


Falls

(Majority are ground-level falls of the elderly resulting in hip fractures and head injuries)

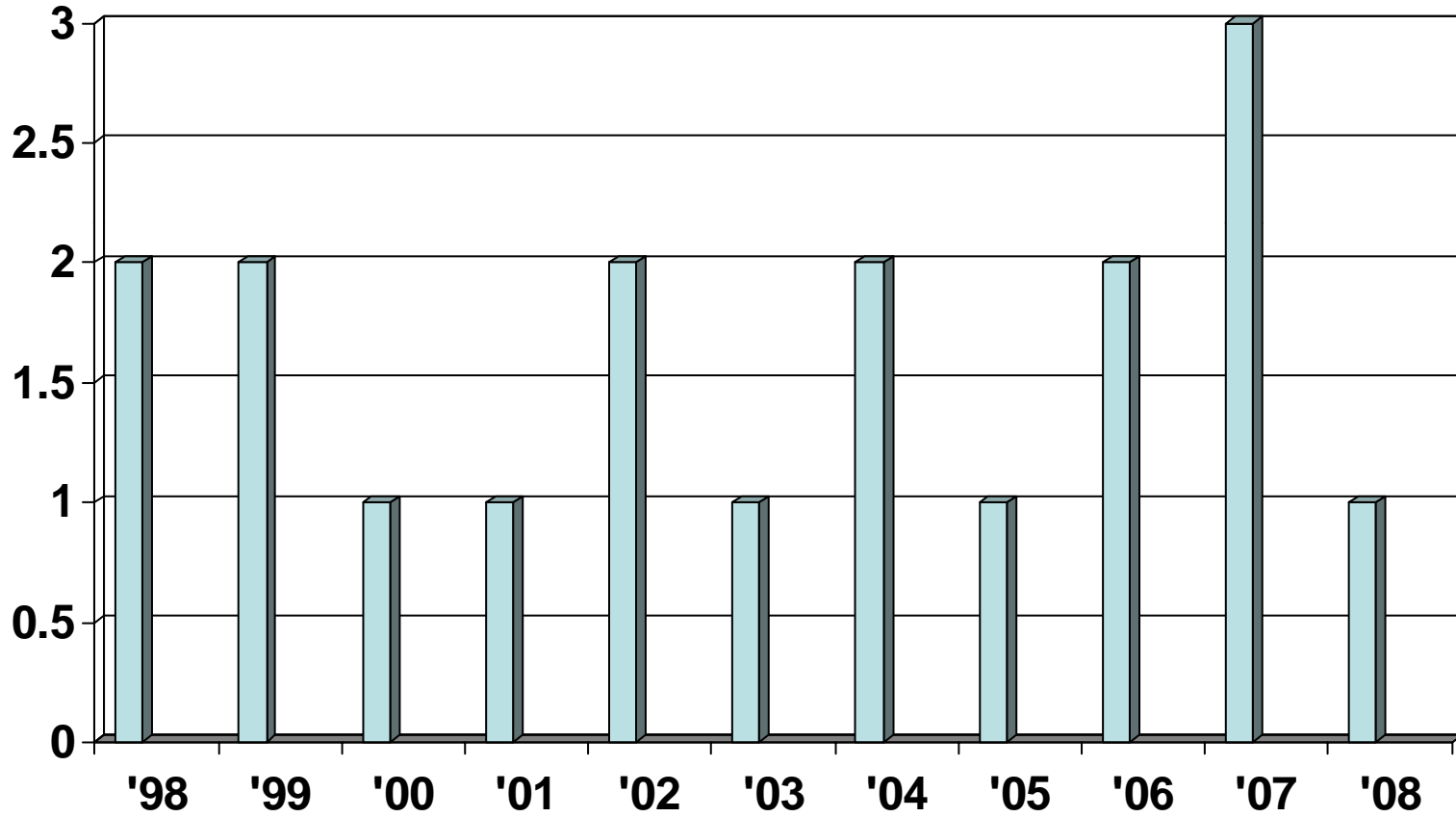


Drug Deaths

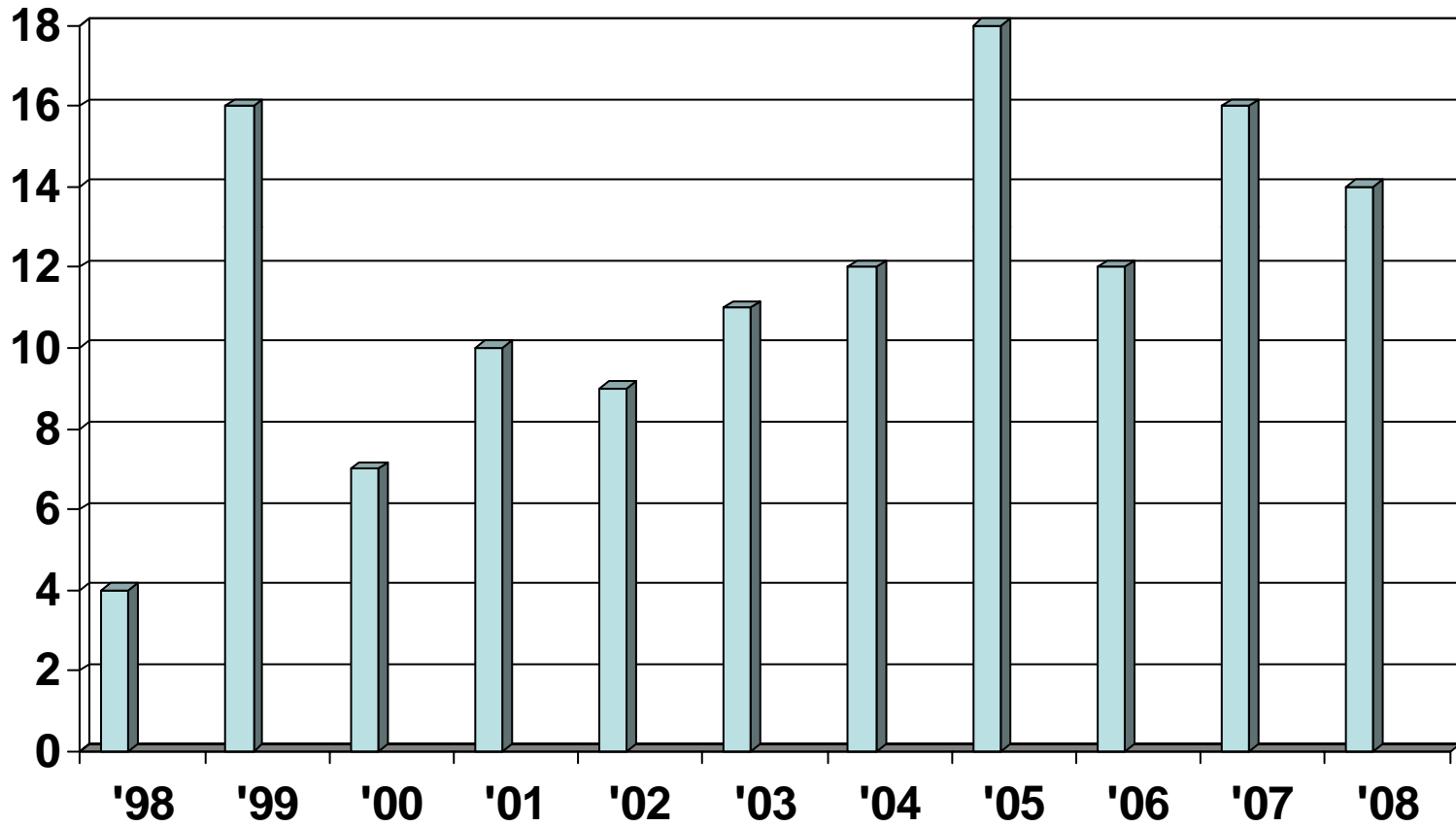


SIDS

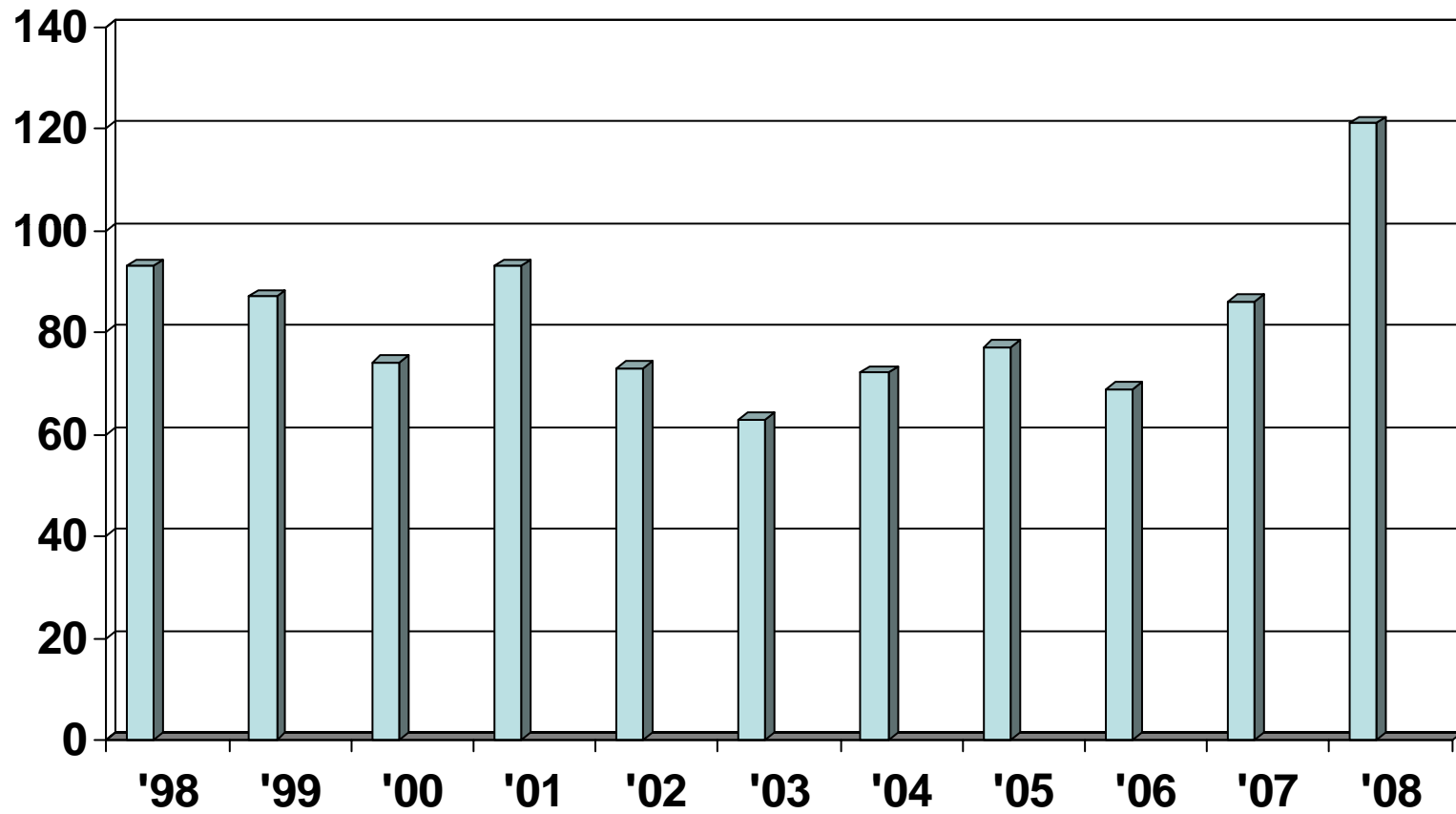
(Sudden Infant Death Syndrome)



Miscellaneous

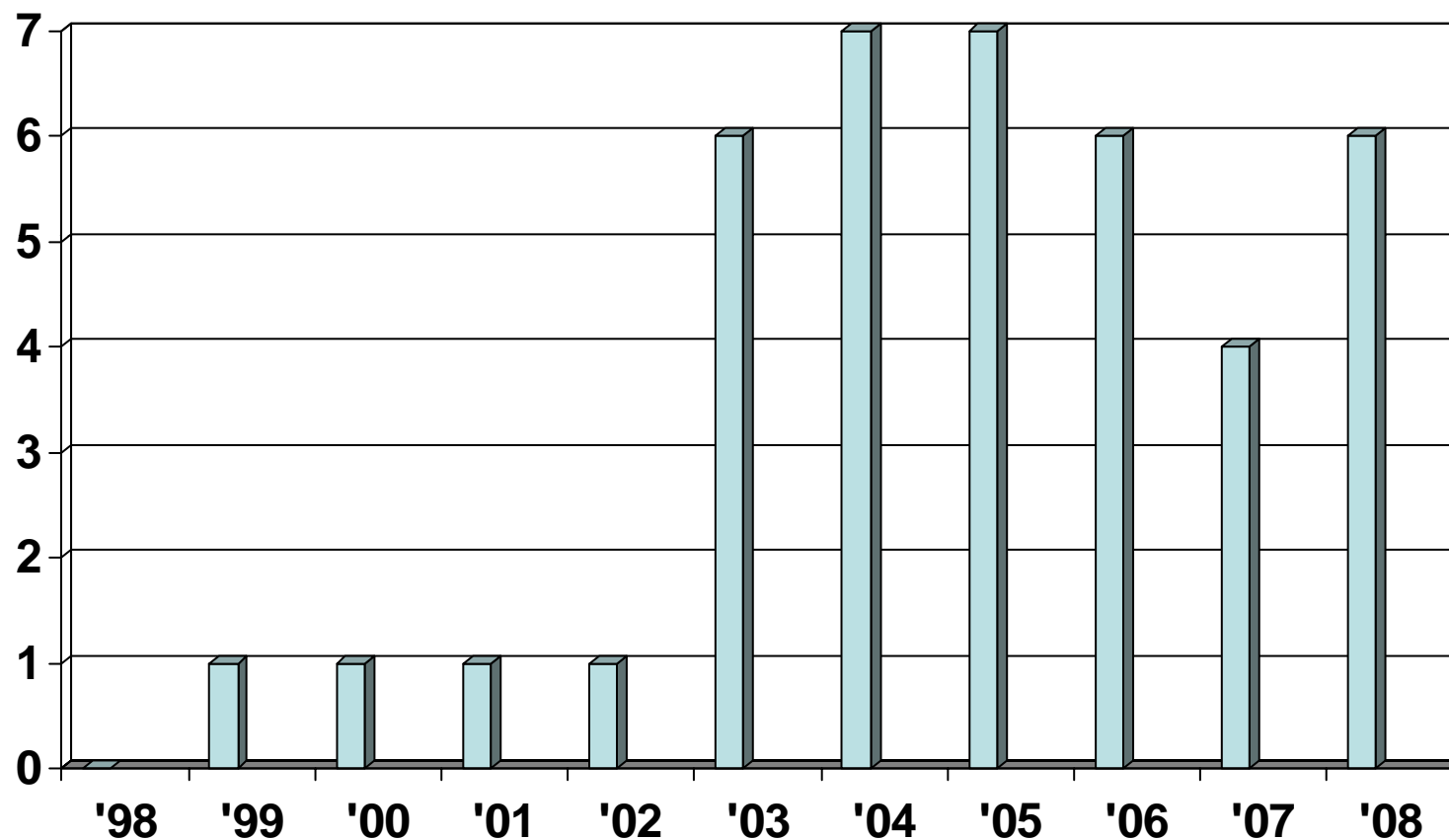


Natural



Undetermined

(When cause and/or manner cannot be determined after autopsy, toxicology and scene investigation, it falls into this category)



NJA'S AND JA'S

Every death is reviewed to determine whether jurisdiction is assumed (JA) or no jurisdiction is assumed (NJA).

