

Department III - Open Class

OPEN CLASS FLORAL

Debby Minton - Superintendent (360) 456-1635
 Robyn Tsusi - Asst Superintendent (360) 491-0593
 Cherie Wisman - Asst Superintendent (360) 352-1145

“THE MAD HATTER!” Starring Starring Harry the Hat

A Standard Flower Show at the Thurston County Fair sponsored by The Black Hills District of the Washington State Federation of Garden Clubs (WSFGC) and the Pacific Region of National Garden Clubs, Inc.

GENERAL INFORMATION AND RULES

ENTRIES: Horticulture, Design and Special Exhibits entries will be accepted between 4 and 8 pm on Monday, August 1, in the Thurston Expo Center.

ADVANCED REGISTRATION is **required** in Division II - Design and in Division III - Section B. Artistic Crafts.

CLASSIFICATION CHAIRMAN in each Section shall check for conformity to the schedule.

SPECIAL ENTRY TAGS for Open Class Floral are available from the Fair Office.

EXHIBITORS: May be any resident in Thurston County and all members of the Black Hills District of Garden Clubs. Also, National Garden Clubs Student Judges may enter any adult class.

EACH EXHIBITOR MUST HAVE A SOCIAL SECURITY NUMBER AVAILABLE TO ENTER.

DAYS AND HOURS: The show will be open to the public at 10 am each day of the Fair from Wednesday through Sunday, and close at 10 pm each evening until the end of the Fair, Sunday, at 8 pm.

JUDGING: Judging will take place Tuesday, August 2, at 11:00 a.m. Only authorized personnel, Show Chairman, Assistant Chairman, Judges Chairman, Classification Chairmen, Clerks, Awards Chairman and Photographer may be present during judging.

AWARDS: This show will comply with the requirements and objectives for a Standard Flower show as established by National Garden Clubs, Inc. and printed in the 2007 edition of the HANDBOOK FOR FLOWER SHOWS available at local libraries. The Standard System of Awarding will be used. Stickers will indicate 1st Place, exhibit must score 90 or more (Blue), 2nd place, 85 or more (red), 3rd place, 80 or more (yellow) and Honorable Mention, 75 or more (white). The entry card with sticker may be exchanged for ribbons in the Fairground Office at the end of the fair. The decisions of the judges will be final. Any award may be withheld if the requirements are not met.

CASH PREMIUMS: Thurston County Fair cash premiums will be mailed to exhibitors earning 1st and 2nd place awards if over \$1.00.

RESPONSIBILITIES: The Show Committee will take all possible care to protect exhibits but will not be responsible for loss or damage.

CONSERVATION LIST: Plants on the Washington State Conservation List may not be used in this show unless grown by the Exhibitor or obtained in a legal manner.

FRESH PLANT MATERIAL shall be emphasized in this show.

NO ARTIFICIAL “PLANT” MATERIAL is permitted in any Division.

REPLACING PLANT MATERIAL: Wilted plant material may be replaced each morning before 9:30 a.m.

REMOVAL OF EXHIBITS: Exhibits may be removed after the Fair closes at 8 pm on Sunday until 9 pm, and must be removed before 11 am on Monday. Please let the Superintendent know if there will be any problem in removing an exhibit.

NON-COMPLIANCE: Those not complying with these rules **forfeit** all prizes and premiums.

DIVISION I - HORTICULTURE

“Harry’s Hatrack!”

Consultant: Debby Minton (360) 456-1635 • email: inktvis@aol.com

HORTICULTURE RULES:

The Sunset Western Garden Book will be used as reference authority

- General Requirements
 - All plant material MUST BE fresh and grown by the exhibitor.
 - Cut annuals and biennials must have been in the Exhibitor’s possession from seeds, cuttings or immature plants for at least 90 days; perennials for at least 90 days; bulbous blooms from planting of bulb, tuber, corm, for at least 90 days.
 - Container-grown plants must have been in Exhibitor’s possession at least 90 days. Exceptions: Multiple plantings and combination plantings must have been in the Exhibitor’s possession and growing together at least six weeks.
- Entry tags are available at the Fair Office, to be filled out **in pencil** in advance, if possible.
- All specimens must be correctly named by Genus, species and/or variety. This name may be found in the Sunset Western Garden Book. Common name may also be given.
- An exhibitor may enter as many exhibits as desired in any class or sub-class provided each exhibit is a different cultivar, color or type. The Committee will sub-divide classes by variety/cultivar, color or type for judging.
- Clear (uncolored) glass bottles will be provided for cut specimens.
- All specimens must be properly conditioned and groomed (cleaned). No shining agents are permitted.
- Cut specimens should not have any foliage below water line. Wedging with plastic wrap or any other unobtrusive material is permitted.
- Cut specimen length is not to exceed 30” except where noted.
- Containers for potted plants may not exceed approximately 16” in diameter. Double potting is permitted.
- Youth may enter any Class in this Division. All horticulture rules above apply, Enter in Division III. Section C-a.

GLOSSARY FOR HORTICULTURE

ARBOREAL: Pertaining to trees and shrubs.

BLOOM: An individual flower, usually between 1/2 and 3/4 open.

BUD: An undeveloped flower (or leaf).

CULTIVAR: A cultivated variety of a plant.

FRESH PLANT MATERIAL: Any part severed from a living plant and in good condition.

SCAPE: A bare, leafless flower stem arising from the ground. Example: daylily, daffodil.

SPIKE: A lengthened flower cluster in which flowers are practically stemless. Example: Gladiolus, snapdragon.

SPRAY: A group of florets on a branched stem, each on its own stalk.

STEM: The major supporting structure in plants to which buds, leaves and flowers are attached at regular intervals at points called nodes.

Section “A” - ANNUALS & BIENNIALS (cut specimens) Class

- Bachelor’s Button (*Centaurea cynus*) 3 stems
 - same color
 - mixed colors
- Calendulas (*C. officinalis*) 3 stems
 - same color
 - mixed colors
- China Aster (*Callistephus chinensis*) 3 stems
 - same color
 - mixed colors
- Carnations (*Dianthus*) 3 stems
- Clarkia (*Godetia*) - 3 stems
 - same colors
 - mixed colors

6. Cosmos - 3 stems
 - a. same colors
 - b. mixed colors
7. Gloriosa Daisy (*Rudbeckia hirta*) - 3 stems
8. Lavatera (*L. trimestris*) - 1 spray
9. Love-in-a-Mist (*Nigella*) - 1 spray
10. Marigolds (*Tagetes*)
 - a. African or American (*T. erecta*) 1 stem
 - b. French (*T. patula*) 3 stems
 - c. Any other *Tagetes*
11. Nasturtiums (*Tropaeolum majus*) 3 stems
 - a. Singles
 - 1) same color
 - 2) mixed colors
 - b. Doubles
 - 1) same color
 - 2) mixed colors
12. Painted-tongue (*Salpiglossis sinuata*) 1 spray
13. Pansy (*Viola*) - 3 stems
14. Petunia hybrids 1 spray
 - a. single
 - b. double
 - c. ruffled
 - d. other
15. Poor-man's Orchid (*Schizanthus pinnatus*) 1 spray
16. Snapdragon (*Antirrhinum majus*) 1 spike
17. Sunflower (*Helianthus*) 1 stem or spray
18. Sweet Peas (*Lathyrus odoratus*) 6 stems
19. Zinnia
 - a. Small flowered (under 1 1/2") - 3 stems
 - b. Large flowered - 1 stem
20. Baby's Breath (*Gypsophila elegans*) 1 stem
21. Statice (*Limonium sinuatum*) 3 stems
 - a. same color
 - b. mixed colors
22. Strawflowers (*Helichrysum bracteatum*) 3 stems
 - a. same color
 - b. mixed colors
23. Any other garden grown annual not listed.
No roadside flowers will be accepted in this Class.

Section "B" - PERENNIALS FROM FLESHY ROOTS (cut specimens)

(Bulbs, corms, rhizomes, tubers other than *Gladiolus* and Dahlias)
 Eligible for the Lily Award (local)

Class

1. Garlic/onion Seed Head (*Allium*) - 1 stem if large, 3 if small
2. Daylily (*Hemerocallis*) - one scape
3. Lily (*Lilium*) - 1 stem
4. Lily-of-the-Nile (*Agapanthus*) - 1 stem
5. Montbretia (*Crocsmia*) - 3 stems
6. Peruvian lily (*Alstroemeria*) - 1 spray
7. Tuberous Begonia Bloom - one bloom, stem 1" to 2" long
8. Any other perennial from fleshy roots not listed.

Section "C" - PERENNIALS (cut specimens)

(Other than fleshy rooted under Section "B" above)

Eligible for an Award of Merit

Class

1. Aster - 1 spray
 - a. *A. frickartii*
 - b. Michaelmas Daisy
2. Daisies (*Chrysanthemum*)
 - a. Shasta Daisy (*C. maximum*) - 3 stems
 - b. Painted Daisy - Pyrethrum (*C. coccineum*) - 3 stems
 - c. Marguerite (*C. frutescens*) - 1 spray
 - d. Other early garden mums
3. Delphinium - 1 spike
4. Phlox (*P. paniculata*) - 1 scape
5. Succulent bloom - 1 stem

6. Baby's Breath (*Gypsophila paniculata*) - 1 stem
7. Chinese Lantern (*Physallis alkekengi*) - 1 stem
8. German Statice (*Limonium dumosa* or *taphorarica*) - 1 stem
9. Yarrow (*Achillea*) - 3 stems
10. Artemisia - 1 stem
11. Dusty Miller (*Senecio cineraria*) - 1 stem
12. Hosta - 3 leaves
 - a. same variety
 - b. 3 varieties, - 1 leaf each, card with names attached to entry cards
13. New Zealand Flax (*Phormium tenax*) - 1 leaf, may exceed 30"
14. Any other perennial

ORNAMENTAL GRASSES - may have plumes, may exceed 30" to show gracefulness

15. Pampas Grass (*Cortaderia selloana*) - 3 stems, length in proportion to plume
16. Eulalia Grass (*Miscanthus sinensis*) - 5 stems, length appropriate to variety
17. Sedge (*Carex*) - 5 stems, length appropriate to variety
18. Bamboo - 1 stem cut not more than 36" long
19. Any other grass-like perennial

Section "D" - DAHLIAS

Eligible for an Award of Merit

Dahlias must:

1. have only one bloom per stem
2. have at least one pair of leaves (stem must be long enough for leaves to be above bottle rim).

SINGLE ENTRIES - 1 stem each variety

Class

1. Bloom over 10"
2. Bloom 8" to 10"
3. Decorative.
 - a. Bloom 6" to 8"
 - b. Bloom 4" to 6"
4. Cactus
 - a. Bloom 6" to 8"
 - b. Bloom 4" to 6"
5. Waterlily
6. Ball (over 3 1/2")

TRIPLE ENTRIES - 3 stems each variety

7. Miniature (under 4") Decorative
8. Miniature (under 4") Cactus
9. Mini balls (2" to 3 1/2")
10. Pompons (2" and under)

OTHER

11. Other types not listed above (peony, anemone, collarette, single, orchid and novelty)

Section "E" - GLADIOLUS

Eligible for the Glad Award (local)

Note: *Gladiolus* are entered with attached leaves, preferable two for balance. There may be foliage below the water in the container. The length of the stem should be in good balance to the blooms and very straight. The spike should have about one-third tight buds, one-third showing color, and one-third open blooms. Wedging with plastic wrap or styrofoam or any other unobtrusive material is encouraged so that the spike stands as straight as possible. (Plastic wrap available from Show Committee.)

The Show Committee will sub-divide *Gladiolus* by color before judging.

Class: Size determined by the width of an open floret

1. Miniature - under 2 1/2" - 1 spike
2. Small - 2 1/2" to 3 1/2" - 1 spike
3. Medium - 3 1/2" to 4 1/2" - 1 spike
4. Large - 4 1/2" to 5 1/2" - 1 spike
5. Extra-large - 5 1/2" or larger - 1 spike
6. Three (3) spikes of same size, same or mixed colors

Section "F" - VINES (Vines should be between 12" and 24" long)

Eligible for the Vine Award (local)

Class

1. Clematis
 - a. deciduous
 - b. evergreen
2. Climbing Hydrangeas (*H. anomala*)
3. Fatshedera
4. Honeysuckle (*Lonicera*)
5. Hops (*Humulus*)
6. Any other vining plant grown for summer interest

Section "G" - FLOWERING SHRUBS & TREES (cut specimens)

Eligible for an Arboreal Award and the Past President MarvaLee Peterschick Award (WSFGC)

One branch of not less than 12" or more than 30" is permitted.

Class: (must be in bloom)

1. Fuchsia - cut branch
2. Rose of Sharon (*Hibiscus syriacus*)
3. Hydrangea - bloom will be sub-divided by color
 - a. big leaf (*H. macrophylla*)
 - b. lace cap (*H. petolaris*)
 - c. Any other type Hydrangea
4. Rose (*Rosa*)

One stem or spray (with leaves)

- a. Hybrid Tea or Grandiflora, one stem, one bloom per stem without side buds
- b. Hybrid Tea spray, not disbudded, three or more florets
- c. Grandiflora, one spray
 - a. Floribunda, one spray
 - b. Climbing Rose, one spray
 - c. Polyantha, one spray
 - d. Rugosa or Hybrid Rugosa, one stem
 - e. David Austin English Rose, one stem
 - f. Ground Cover Rose, one spray
 - g. Miniature Rose, one stem disbudded
 - h. Miniature Rose, one spray
 - i. Any other Rose, one stem
4. Smoke Tree (*Cotinus coggyria*)
 - a. Green
 - b. Purple (*C.c. 'Purpureus'*)
7. Magnolia grandiflora - with bloom
8. Any other **flowering shrub/tree in bloom**



Note: *Buddleia davidii* (Butterfly Bush) will not be accepted because it is on the noxious weed list

Section "H" - SHRUBS & TREES (other than flowering) (grown for summer interest due to foliage color or bold form)

Eligible for an Arboreal Award

One branch not less than 12" or more than 30" long is permitted.

Class:

1. Barberry - Japanese (*Berberis thunbergii*)
 - a. green
 - b. red
 - c. other
2. Aucuba - Japanese (*A. japonica*)
 - a. spotted
 - b. colored margins
 - c. green
3. Fatsia - one leaf
4. Oregon Grape (*Mahonia*)
5. Nandina
6. Ginko
7. Maple (*Acer*)
 - a. Scarlet (*A. rubrum*)
 - b. Box Elder (*A. nigrum*)
 - c. Japanese (*A. palmatum*)
 - d. Any other maple (named)
8. Any other **shrub/tree** grown for summer interest because of color, texture or berry.

CONTAINER-GROWN PLANTS

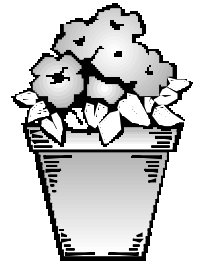
Container grown plants must have been grown by the exhibitor for at least three (3) months. Exceptions: multiple plantings, such as planters, dish gardens, etc. must have been grown together, by the exhibitor, for at least six (6) weeks. Exhibits shall be subdivided by variety and color. The Show Committee will sub-divide as needed before judging. Due to space limitations the container may be no larger than 12" in diameter, exception Section "K" Combination Plantings may be up to 16" in diameter.

Section "I" - CONTAINER-GROWN PLANTS - FLOWERING

Eligible for a Grower's Choice Award

Class:

1. African Violet (*Saintpaulia*)
 - a. single
 - b. double
 - c. training
 - d. mini
2. Orchid (Orchidaceas)
3. Begonia
 - a. Tuberous (*B. tuberhybrida*)
 - b. Wax (*B. semperflorens*)
4. Fuchsias
5. Geranium (*Pelargonium*)
 - a. common
 - b. Martha Washington (*P. domesticum*)
 - c. variegated, fancy-leafed or colored-leafed (*P. horotum*)
 - d. Ivy (*P. peltatum*)
 - e. scented (*P. tomentosum*, others)
6. Any other container-grown flowering plant - in bloom



Section "J" - CONTAINER-GROWN PLANTS - FOLIAGE

Eligible for a Grower's Choice Award

1. Cactus
 - a. single plant
 - b. two or more cacti - 1 container
2. Jade plant (*Crassula argentea*)
3. Begonia - Fibrous-rooted
 - a. Iron Cross (*B. masoniana*)
 - b. Rex (*B. rex-cultorum*)
4. Sedums and succulents one variety
5. Succulent wreath or plaque
6. Any other container-grown foliage plant not listed above

Section "K" - CONTAINER-GROWN PLANTS - COMBINATIONS

1. Combination of Cactus, Sedums and/or Succulents
2. Combination of mixed varieties of flowering plants - in bloom
3. Combination of mixed varieties of foliage plants
4. Combination of flowering and foliage plants

Section "L" - HERBS

Eligible for the Gourmet Award (local)

Note: Stem length in proportion to exhibit, uniformity important

1. Basil (*Ocimum basilicum*) - 1 stem
 2. Borage (*Borago officinalis*) - 1 stem
 3. Chives (*Allium*) - 10 blades
 4. Coriander (*Coriandrum sativum*) - 3 stems
 5. Lavender (*Lavandula angustifolia*) - 5 stems
 6. Lemon Balm (*Melissa officinalis*) - 3 stems
 7. Lemon Verbena (*Aloysia triphylla*) - 1 stem
 8. Mint (*Mentha*) - includes Pennyroyal - 1 stem
 9. Oregano & Marjorams (*Origanum*) - 3 stems
 10. Parsley (*Petroselinum crispum*) - 1 stem
 11. Rosemary (*Rosmarinus officinalis*)
 - a. Prostrate - 1 stem
 - b. Upright - 1 stem
 12. Sage (*Salvia officinalis*) - 1 stem
 13. Tarragon, French (*Artemesia dracuncululus*) - 1 stem
 14. Thyme (*Thymus*) - 3 stems same variety
 15. Any other named cut herb, number and length appropriate to variety
- Note:** Common Fennel (*Foeniculum vulgare*) is considered a noxious weed and will not be accepted. Exception: The variety *Foeniculum vulgare azoricum* known as 'bulbing' fennel is permissible

Section "M" - FRUITS AND VEGETABLES

Eligible for the Harvest Award (local)

Class:

FRUITS - should be clean and fresh, wiped, but not washed or polished

1. Berries - approximately 1/2 cup, shown in wrapped plastic glass
2. Tree fruit - three specimens each variety, named

VEGETABLES - In general, uniformity (same size, shape, color) in multiple specimen exhibits is desired.

3. Corn - three ears - trim shank to 1" from base, remove husk on 1/3 of each ear
4. Rhubarb - three stems, pulled, not cut, with 1" leaf on stalk

SALAD FIXINGS

5. Cucumber - three of a variety
6. Lettuce - one head, cleaned and groomed, may be washed, on styrofoam tray lightly covered with plastic wrap
7. Tomatoes - clean with soft cloth
 - a. Large - one tomato
 - b. Medium (Patio-type) - three specimens
 - c. Small (cherry-type) - six specimens
 - d. Cluster of small tomatoes (cherry, pear, etc.) with 1/3 showing color, 1/3 some color, 1/3 green
8. Pepper - three specimens
 - a. green
 - b. other

SQUASH - 1" stem attached, wipe clean gently

9. Crookneck - 4" to 8" long, three specimens
10. Pumpkin
 - a. Large - one
 - b. Mini - three
11. Spaghetti squash - one
12. Zucchini
 - a. Small/medium - 4" to 8" long, three specimens
 - b. Large - one specimen
13. Other squash, number depending on size of variety

CRUCIFEROUS VEGETABLES - generally one head, remove outer leaves only

14. Broccoli
15. Cabbage
 - a. green
 - b. red
16. Cauliflower
17. Kohlrabi - three specimens, same variety, 2 - 2 1/2" diameter - cut tap root 1/2" below ball, trim leaf petioles to 2"

ROOT CROPS - less soil adheres if dug in dry weather

18. Beets - three specimens, same variety, 2" diameter ideal, trim tops to 1 1/2", remove small side roots but do not remove tap root. Brush or wash to remove soil
19. Carrots - three specimens, same variety, remove side roots, trim tap root to 1/2" diameter, trim tops to 2"
20. Onions
 - a. Dry - 3 specimens, same variety. Do not remove outer scales, cut top to 1/2"
 - b. Green - 6 specimens, same variety. Remove loose skin, cut tops 4" to 5" above white, trim roots to 1/2"
21. Garlic
 - a. Regular - 3 bulbs
 - b. Elephant - one bulb
22. Potatoes - brush off soil gently, wash only if necessary, three specimens each variety, must be named
 - a. white
 - b. red
 - c. yellow
 - d. any other potato

LEGUMES - six specimens same variety each class

23. Beans
24. Peas
25. Snap peas

ANY OTHER VEGETABLE not mentioned above will be entered under the closest variety with entry tags marked "X"

DIVISION II - FLORAL DESIGN

"Tiaras to Top Hats"

SPECIAL RULES FOR DESIGN

1. Entries in this Division, Sections "A" through "E", must be pre-registered by Monday, July 25, by calling the Consultant listed with each section.
2. If a designer is unable to enter the class, it is the designer's responsibility to find a replacement and notify the Consultant.
3. Each design must have been created and placed by one exhibitor.
4. Only one entry per exhibitor is allowed in any Class.
5. A minimum of 4 exhibits is required in each class.
6. Absolutely **NO** artificial flowers, fruit or foliage permitted.
7. **FRESH** plant material may not be treated in any manner, including dye or paint. **Take care with commercially available flowers – some are dyed.**
8. Adult Design width is limited to approximately 24" of table space unless otherwise stated.
9. Landscapes and/or scenes are not accepted in this Division.
10. Exhibitors are responsible for keeping their exhibits in good condition for the duration of the Fair.
11. Featured objects, accessories, container-grown plants growing in soil (where appropriate) and living plants with roots attached are permitted in all classes. Special effects are allowed where power is available.
12. Living members of the Animal Kingdom are not permitted.
13. Flags and religious symbols, if used, must be used properly.
14. **FRESH** plant material is to be emphasized in this show.
15. Plant materials used in this division do not need to have been grown by the exhibitor and may be commercially grown.
16. Cut fruits or vegetables are permitted if sealed unobtrusively to discourage insects, odors and discoloration.

GLOSSARY for DESIGN

ACCESSORY: Anything in an arrangement in addition to plant material, container, base, background or mechanics, must be subordinate in the design.

ALFRESCO: Dining out-of-doors.

CREATIVE DESIGN: Designs that result from the creative ideas of the artist, using plant material and other components to organize the design elements within the limits of the principles of design. This type includes Abstract.

DECORATIVE UNIT: In a Table Class, floral design/s with or without other components such as candles or other accessories if any.

DRIED PLANT MATERIAL: Plant material from which the moisture has been removed.

SCULPTURAL FORM DESIGN: See Handbook for Flower Shows pg. 208. If you do not have a handbook contact Debby Minton at 360-456-1635, email: inktvis@aol.com

TABLE SETTING DESIGN—EXHIBITION MODE: components relating to the service of food artistically arranged without consideration of functional placement.

Type I: must contain a decorative unit.

Type II: may not include a completed decorative unit, but must include some plant material placed artistically.

TABLE SETTING DESIGN—FUNCTIONAL MODE: Planned and set for actual service of food; table could function for dining as displayed.

TREATED PLANT MATERIAL: Dried plant material whose appearance has been altered, but is still recognizable as plant material.

TUBULAR DESIGN: A Creative Design having a dominance of cylindrical components See Handbook for Flower Shows pg. 211.

USING: May be on and/or incorporating other objects, frames, pedestals, etc. Advanced registration required. Call Consultant by Monday, July 25

Section "A" - "The Royal Court"

Consultant: JoAnne Sandell (360) 438-6295 • email: sandbs@comcast.net
All plant material must be fresh. Eligible for the Tricolor Award and the Ellen B. Swenson Award (WSFGC)

Class:

1. **"Queen's Tiara"** – A tubular design (See Glossary) staged on a 24" wide by 30" deep section of an 8 foot table.
2. **"King's Crown"** - A design staged on a moss green pedestal 36" high with an 18" diameter round top.
3. **"Jester's Cap"** - A design for an entryway table staged on a 24" wide by 30" deep section of an 8 foot table.

Keep in mind that wood is plant material so, if used, has to be fresh.

Section "B" – "The Wild West"

Consultant: Sharon McKissick (360) 273-4962 email: smckissick@aol.com
Novice Designs. (Novice - having won no more than five Blue Ribbons in Design in a Flower Show)

Class: All designs in this section will be staged on a 24" wide by 30" deep section of an 8' table

4. **"Ten Gallon Stetson"** - a design using a hat
5. **"Bandit's Bandanas"** - a design using weathered wood
6. **"Indian Chief's Bonnet"** - a centerpiece design for a picnic table

Section "C" - "The RugRat Crew"

Consultant: Annita Noah (360) 459-5613 email: noahville@aol.com
Petite Designs

Miniature designs under 5" in height, width and depth. Small designs under 8" in height, width and depth. Eligible for the Petite Award

Class:

Miniature Designs

7. **"Baby Bonnets"** - A miniature design staged on a 3" tall moss green pedestal. Designer's choice of plant material.
8. **"Stocking Caps"** - A miniature design staged on a round, mirrored shelf 2" in diameter. Designer's choice of plant material.

Small Designs

9. **"Propeller Beanies"** - A small design staged on a turntable. Designer's choice of plant material.
10. **"Baseball Cap"** - A small design using fresh and/or dried plant material staged on frosted Plexiglas boxes of varying heights

Section "D" – "The Chuck Wagon"

Consultant: Sharon Warren (360) 491-9277 email: jaywarren@comcast.net
Eligible for the Table Artistry Award

Classes 12 & 13 also Eligible for the Phyllis Danielson Award (WSFGC)

Class:

11. **"Stovepipe' Hats"** – A functional breakfast table setting for 2 staged on 1/4 of a 5' diameter table. The right angle wedge is 30" deep and measures 47" on the circumference of the table. Must have a complete decorative unit.
12. **"Football Helmets"** - An Exhibition Type II table setting (without a completed decorative unit), see Glossary, for a tailgate party staged on 1/4 of a 5' diameter table The right angle wedge is 30" deep and measures 47" on the circumference of the table.
13. **"Night Cap"** – An Exhibition Type I table setting (with a completed decorative unit). See Glossary. for cocktails staged on a 20" diameter 'accent' table, 26" high, provided by the Show Committee, must be skirted by the exhibitor (some skirts available from the committee, reserve when registering.)

Section "E" - "High Society"

Eligible for the Designer's Choice Award and the Past President Ellen B. Swenson Award (WSFGC)

Consultant: Cherie Wiseman, (360) 352-1145 email: cherlu@webtv.net

Class:

14. **"Derby Day"** - A sculptural form design (See Glossary) staged on a 4' wide by 30" deep section of an 8' table.
15. **"Top Hats and Tails"** - a design using a black open pedestal, 36" high with an 18" diameter top, provided by the Show Committee.
16. **"Picture Hats"** - A design using a frame provided by the designer staged on a 4' wide by 30" deep section of an 8' table.

DIVISION III - SPECIAL EXHIBITS

"Tip Your Hat"

General Requirements:

1. Each exhibit must contain some plant material.
2. No artificial "plant" material allowed.
3. There must be at least three classes with at least four exhibits in each for Top Awards to be given.
4. No minimum number of exhibits required in youth sections.
5. Judges must withhold award if no exhibit meets requirements.

Section "A" - EDUCATIONAL EXHIBITS

"The Thinking Cap"

Eligible for the Educational Award and the Carol Klingberg Award (WSFGC)

If you are interested in doing an Educational exhibit, please contact Debby Minton at 456-1635

Section "B" - ARTISTIC CRAFTS

"Milliner's Mayhem"

Eligible for the Artistic Crafts Award and the JoAnne Goldman Award (WSFGC)

Consultant: Pre-registration required. Call consultant before July 25.

Class

1. **"In The Corner"** - A decorated dunce cap no taller than 15".
2. **"The Hat Box"** - A decorated box no bigger than 12" in any dimension.
3. **"Harry 'POT' ter"** - A decorated flower pot between 4" and 6" in diameter

Section "C" - YOUTH EXHIBITS

"The Hat Parade"

Consultant: Gail Martinolich, 360-459-2280

Youth Exhibits grouped as follows:

Junior - Preschool through age seven

Intermediate - Ages eight through fourteen

Eligible for a Youth Achievement Award



Section "C-1" - YOUTH HORTICULTURE

"Straw Hats"

Youth may enter any Class in Division I, Horticulture.

All horticulture rules apply.

Section "C-2" - YOUTH DESIGN

"Party Hats"

Youth may enter any Class in this Section

Designs will be staged on approximately 18" square of white covered table space.

Class

1. **"The Tinman's Hat"** - A flower arrangement in a metal container.
2. **"Cat In The Hat"** - A flower arrangement using a figurine.
3. **"Harry the Mad Hatter"** – A statue of Harry using fruits and/or vegetables and/or flowers and leaves— suggestion: use harder fruits and vegetables such as apples, carrots, winter squash and potatoes as softer fruits spoil too quickly.

DIVISION D - OPEN CLASS ART

Karen Crate - Superintendent, (360) 943-1927, email wkcrate@comcast.net

1. Complete the Exhibitor Card that may be obtained from the Fair Office or at the Fine Arts building the day of the Fair entry. You may use a "return home address label" for those sections requesting your name and address.
2. Artwork must have been completed within the past two years, and not previously entered in the Thurston County Fair.
3. Exhibitors are limited to three pieces of artwork each, on a first come basis, space available.
4. All entries must be original, they must be the Exhibitor's own work, and may not have been created in whole or part by anyone else. (Some exceptions may be made for the Challenged Artists Class.)
5. **All hanging artwork must be suitably framed and wired for hanging. No saw tooth hangers or clip frames. Entries larger than 21" X 27" overall size, will be accepted subject to space availability.**
6. Entries deemed unsuitable may be refused for display at the discretion of the Superintendent.
7. Judges will be professional artists selected by the Olympia Art League. Judges decisions will be final.
8. **The Youth Class** will be subdivided into three groups as follows: Under 8 years; 8-12 years; 12-17 years.
9. **Challenged Artists of All Ages.** This category includes individuals whose developmental age does not correspond to their chronological age. Exhibitor's work in this category will be judged with their developmental age, and will be displayed with their chronological age group.
10. **The Adult Class** is divided into Amateur and Semi-professional/Professional. An Amateur is a beginner painter, hobbyist, or casual painter who does not offer their work for sale nor show their work in shows or galleries. Work must be original (i.e., may not be copied or closely based on copywrited work). A Semi-professional/Professional Artist is an artist who exhibits their work and offers it for sale. Work must be original, (i.e., may not be copied or closely based on copywrited work).

Judging: The Youth, Challenged Artists, and Adult Amateur classes will be judged on the Danish System, each piece is judged on its own merits against a point system. As many blue, red, white, and honorable mention ribbons will be awarded as are merited within each class. Each piece is judged on originality, creativity, composition, and technique. The Adult/Semi-professional/Professional classes will be judged on the American System. Each piece will be compared to all others in the category.

Special Awards

TWO PEOPLE'S CHOICE RIBBONS WILL BE AWARDED EACH DAY OF THE FAIR: ONE FOR YOUTH AND ONE FOR ADULTS. A work of art may win only one People's Choice ribbon.

THE OLYMPIA ART LEAGUE WILL SPONSOR CASH AWARDS FOR THOSE IN THE ADULT CATEGORIES FOR:

Top of Show \$75
 Best of each group within the 2 exhibitor classes
 (Amateur and Semi-professional/professional) \$25

Bring entries to the Fairgrounds between 10:00 am and 4:00 pm on Saturday, July 30, and 11:00 am to 3:00 pm on Sunday, July 31. Two dimensional art that is not properly prepared for hanging will not be accepted.

Pick up artwork on Sunday, August 7, last day of the fair, 8:00 pm to 9:00 pm and Monday, August 8, 3:00 pm to 7:00 pm. Claim check is needed to pick up artwork.

CLASS 1 - YOUTH CLASS 2 - CHALLENGED CLASS 3 - ADULT

POINTS	BLUE	RED	WHITE
	50	30	15

LOT

- A Drawings in pencil, colored pencil, charcoal, pen & ink, crayon, and scratch board
- B Paintings on paper using water media, such as watercolor, acrylics or gouache
- C Paintings using oil or acrylics on canvass or other non-paper surfaces

- D Paintings in pastel
- E Graphics (etching, litho, serigraph, woodblock, etc.)
- F Mixed media (2 dimensional)
- G Miniatures. Art in any of the above categories that has no greater dimensions than 5" X 7", including mat and frame.
- H 3 Dimensional (sculpture, pottery, mixed media)

NOTE: If there are too few entries in any of these categories, they may be combined with other painting categories.

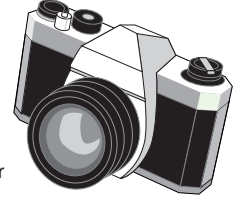
DIVISION E - OPEN CLASS PHOTOGRAPHY

Allynn Balch - Superintendent - 360-556-9427

balcham@hotmail.com

OPEN CLASS PRINT COMPETITION

How to Enter a Print



1. Obtain an entry for the 'Photographic Exhibition (open class)', available from FRIDAY, July 1 through Wednesday, July 27th at Don's Camera 316 North Capitol Blvd, Olympia; Kit's Cameras 1200 Cooper Point Rd., Olympia; Beard's Framing, Fred Meyer Shopping Center, Lacey; or at The Thurston County Fair office. Fill it out the form completely following the detailed instructions on the back of the entry form as shown in 2 and 3 below. Entry forms will also be available on Saturday, July 30th, at the Photo Entry Desk in the Hobbies/Craft Building, Thurston County Fairgrounds. Deliver your prints as detailed in 4, below.
2. Exhibitor number is the first letter of your last name plus the last 4 numbers of your Social Security Number.
3. Enter the following in the upper left corner on the back of EACH PRINT mount. (Prints will become separated from the entry form.) This information is essential:
 - * Title of your print
 - * Your exhibitor number (see 2 above)
 - * Your full name
 - * Your complete address
 - * Your phone number
 - * Lot and class
 - * Print number (taken from the line on the entry form)

4. From July 1st until July 27th prints may be delivered to:
 - DON'S CAMERA, 314 North Capitol, Olympia
 - KIT'S CAMERAS, 1200 Cooper Point Rd, Olympia
 - BEARD'S FRAMING, Fred Meyer Shopping Center, Lacey

After July 27th, prints must be entered at the Thurston County Fair (Sokolik Bldg.) on July 30th between 10:00 am and 4:00 pm.

RULES

1. The exhibitor of the picture must be the original maker of the image.
2. Prints will be accepted only on the Saturday prior to the Fair between the hours of 10:00 am and 4:00 pm. Early entries will be accepted as in 4, above.
3. Prints entered MUST be identified with the following information printed clearly in the upper left corner on the BACK of each print mount: Title of print, Exhibitor Number, Exhibitor's full name, complete address and phone number, lot, class, and print number (see 3, above).
4. Any print with any identifying marks or writing on the front will be disqualified from judging and peoples choice awards but will still be displayed at the fair.
5. All exhibits must be mounted and/or matted. Foam core mounts and/or matte board style is preferred. Framed prints and prints mounted with glass will not be accepted.
6. No hooks or wires are to be placed on the back of the print mounts.
7. A maximum of 6 prints will be accepted from each exhibitor. A maximum of 3 prints may be entered in any one "Lot."
8. The NEW minimum entry size is now 8"x 10" and the maximum entry size is 16"x20". Entry sizes will be measured, including matte (if applicable). Odd sized entries are acceptable so long as the shortest side is at least 8" and the longest side is no more than 20".
9. An entry may contain multiple images on one mat or mount so long as dimensions in rule 8 are not exceeded. Multiple image entries will be judged as a single entry.
10. Hand colored black and white prints are acceptable in the Black and White category, so long as there is only one color in addition to black and white. Any entry with 2 or more additional colors will be considered a color print.

11. Digital images are acceptable in any category. Images created using HDR and/or ones that have minimum corrections can be entered into any category. "DIGITAL CREATIONS" should use only LOT 'J'. See "Note from the Superintendent" below.
12. Each print may only be entered in one lot. An exhibitor may not make multiple copies of an image and enter them into different lots.
13. Any print previously entered in the Thurston County Fair Division E - Photography (Open) may not again be entered or exhibited.
14. Following acceptance of prints, the prints will be judged the following day, Sunday July 31st at 9 am. The Superintendent may at his/her discretion, permit exhibitors to witness the judging so long as exhibitors in no way interfere with the judging process. Judges are encouraged to talk about the images and give feed back to the audience when applicable.
15. Admission tickets to the Fair are not provided to exhibitors.
16. Ribbons will be awarded to winners. All ribbons will be posted with the print on exhibit. Other prizes, if available, may be awarded during the Fair.
17. Exhibits must be picked up at the Photo Exhibit desk in the Hobbies/Crafts building, Thurston County Fairgrounds on SUNDAY August 7th 2011, the closing day of the Fair, between the hours of 8:00 pm and 9:00 pm or on Monday following the Fair closing between 4:00 and 7:00 pm. Entries will NOT be mailed to exhibitors. Entries will NOT be returned to the camera shops. Following the Monday after the fair's closing, prints must be picked up at the main office of the Thurston County Fairgrounds.
18. All precautions possible will be taken with entries. The Fair or its volunteers cannot be held responsible for lost, stolen, or damaged exhibits.
19. The Superintendent reserves the right to disqualify and withhold from display any photograph he/she deems inappropriate for a family fair.
20. SECTIONS, CLASSES, LOTS.
SECTIONS are:
A - Adult
J - Junior (less than 13 years old as of January 1, present year)
T - Teen (between the age of 13 and 19 as of January 1, present year)

ADULT SECTION

Class 1 - Color Prints

Class 2 - Monochrome Prints (black and white images)

LOT:

- A People (General people pictures)
- B Domestic animals (livestock and pets)
- C Photojournalism/Human Interest (images of people in every day action)
- D Portraits (Posed people pictures)
- E Wild animals (includes wild and those in captivity)
- F Nature Scenics (Images of land, sky, water etc. There should be little to no evidence of 'man' meaning no people, buildings, bridges or anything man made. A "limited hand of man".)
- G Plants and Flowers (Indoor, outdoor, arrangements, etc.)
- H Man made Scenery. (Scenic's and Vista's that INCLUDE some form of man made object, ei building, bridge, architecture, people etc.)
- I Still-life and Table Top photos (static arrangements)
- J Special Effects & Digital Creations (trick photography and/or images created with a computer after original photo(s) were taken.)
- K Miscellaneous (Photos that don't fit in other lots)
- L Best use of the Thurston County Theme "Ten Gallons Of Fun at the Thurston County Fair." Or the mascot, "Harry the Hat" (Photos of cowboy hats, any other hats and any other general Fair time photos)

JUNIOR SECTION

Class 3 - Junior/Teen ONE CLASS ONLY - Color and Black & White will be judged together.

LOT:

- M People (Includes candid, portrait, Human Interest)
- N Scenic (Landscapes, waterscapes, etc.)
- O Animals (Birds, insects, animals, etc.)
- P Plants and Flowers (Flowers, plants, leaves, etc)
- Q Miscellaneous (All others)
- R Best use of the Thurston County Theme "Ten Gallons Of Fun at the Thurston County Fair." Or the mascot, "Harry the Hat" (Photos of cowboy hats, any other hats and any other general Fair time photos)

JUDGING PROCEDURE:

Prints will be judged on the following criteria:

- Impact of picture
- Composition and subject matter
- Technical merit
- Quality of presentation

Three judges will collaborate to judge each lot and will award ribbons within the lot using a modified "Danish" system. They will be permitted to award as many of each ribbon as they feel is merited by the photographs in the lot. The judges will award a "Champion" ribbon to the print selected as the best in each lot and they will award a "Best of Class" ribbon to one entry from each class. Finally, the judges will collaborate to choose one print as "Best of Show" for the Adult section and one "Best of Show" for the "Junior/Teen" sections. In addition, each judge will award a "Judge's Choice" ribbon to a print of their individual choosing. There will also be a "People's Choice" ribbon awarded for each day of the fair. Each print may earn only one "Peoples Choice" ribbon. NOTE: Any LOT with insufficient monochrome entries will be combined with Color entries for judging. Any single LOT with less than 5 entries total will be judged with the Miscellaneous LOT of appropriate Class.

PREMIUM POINTS: Premium points will be awarded for 1st, 2nd, and 3rd place winners only. Honorable Mention winners will be awarded a ribbon, but no points.

PREMIUM POINTS	BLUE (1st place)	RED (2nd place)	WHITE (3rd place)
	50	30	15

Champion, Best of Class, Best of Show and Judge's Choice Awards will be ribbons only.

NOTE FROM THE SUPERINTENDENT: As the world of photography changes, we have to update some of the rules that go along with this competition. Digital photography is now more prominent than film photography. We encourage everyone to do what they feel is necessary to correct colors, improve sharpness, and make their entries the best they can before the fair. However, if you are creating an image from multiple photos to create a whole new image, please remember to use LOT J so that your creativity can be judged on the same level as other people who are just as creative. We want to encourage everyone to feel their work is accepted and judged equally here at the Thurston County Fair.

OPEN CLASS HOME ARTS

Debra Freelove – Superintendent (360) 264-5683 (thistlehollow@earthlink.net)

Gail Tracy – Assistant Superintendent (360) 352-5076

Carla Sontag – Assistant Superintendent (491-3275)

Miriam Edwards – Assistant Superintendent (493-1518)

Entry Times: Monday, July 25, 3 - 7 pm for all entries except Division J, Baking and Division L, Beverages. NO LATE ENTRIES ACCEPTED. Baking entries are accepted Monday, Aug. 1, 3 - 7 pm, Beverage entries are accepted Tuesday, July 26, 3 - 7 pm and Food Preservation (except honey) entries are accepted July 25, 3 - 7 pm or Aug. 1, 3 - 7 pm. Honey entries are accepted Monday, Aug. 1 ONLY. (Please use a separate entry form for Divisions J, K, and/or L)

PLEASE READ RULES AND CLASS/LOT INFORMATION CAREFULLY RULES:

1. Please refer to the General Rules and Regulations of the Thurston County Fair. NO ITEMS will be accepted or premiums awarded for items which have been previously exhibited at the Thurston County Fair in any division. 4-H'ers may not enter the same item that they exhibit in 4-H.
2. Articles must be finished within the last two years.
3. No award will be given unless the article is worthy. Items not CLEAN, PRESSED, ODOR FREE and in GOOD condition will not be accepted or will be disqualified.
4. The Fair will make every attempt to display all items entered; however, some articles may not be displayed or only be partially displayed.
5. Only one entry of the same type will be accepted for entry in any class or lot, except as noted. Items in question will be referred to the Superintendents; their decision is FINAL.
6. Exhibits will be judged using the Danish system according to standards of Blue, Red and White ribbons.
7. Cash premiums will be awarded to Blue and Red ribbon winners. Ribbons only will be given for White awards.
8. Exhibits must be removed on Monday, August 8th following the close of the Fair, Between 12pm and 7pm.
9. No one judging a Division may enter in that Division.
10. No cross entries.
11. Any home arts entries determined by the judges to be NOT made by entrant, will be disqualified and all other home arts entries entered by that exhibitor will also be disqualified and removed from show.
12. Please cover all names on all entries.

SECTIONS

Please place your section letter before the lot number for each article that is entered. EACH SECTION WILL BE JUDGED SEPARATELY.

ADULT - any person age 19 years or older, not a professional.

PROFESSIONAL a person who derives income over \$2000 per year from teaching or selling hand made products.

JUNIOR - any person age 13 to 18 years, not a professional.

DISABLED - any person regardless of age with mental or physical disability.

YOUTH - 12 and under

SPECIAL HOMEMAKER AWARD

This special award will be given to a homemaker with a variety of skills. The award given will be in addition to the regular ribbons and premiums awarded in the Home Arts Department.

RULES

1. Persons trying for this award must place an "H" after their exhibitor number on all entries.
2. The winner of this award will be excluded from future competitions for this award only, for three consecutive years.
3. Articles must be finished within the last two years.
4. Participant must enter in at least 5 of the 7 Divisions listed in the Home Arts Department: Needle Art, Quilting, Clothing, Fiber Art, Baking, Food Preservation and Beverages.
5. Winner will be decided by total points; however, at least one Blue ribbon in 5 of the 7 divisions must be awarded to qualify. The Exhibitor's Guide states, for each lot entered, the points for Blue and Red ribbons.
6. In the event of a tie, the Superintendent will decide according to the complexity and workmanship of the articles entered. If there is only one entrant, a minimum 99 points are needed to qualify.
7. A cash prize of \$50.00 will be awarded.

SPECIAL AWARDS

In honor of the fair mascot, Harry Hat, a Home Arts Superintendent Award will be given for Harry's Hairiest Hat (use of novelty yarn, fringe, tassels etc.) and Harry's Heritage Hat (based on any period style using traditional millinery techniques please specify year or era). Hats are included in Division F classes 6 & 8, Division H class 5 and Division I classes 4, 5 & 6.

DIVISION F - OPEN CLASS NEEDLE ARTS

(Superintendent – Kate Jantz-Koprivnik - talkingthreadsmedia@gmail.com
All work to be done by the exhibitor.
Limit 2 entries per lot

CLASS 1 - NEEDLEPOINT

POINTS	BLUE	RED	WHITE
	15	10	RIB

LOT

- A Picture, under 14"
- B Picture over 14"
- C Pillow
- D Stool or Chair cover
- E Key Chain
- F Jewelry
- G Any one other

CLASS 2 - TATTING & LACEMAKING

POINTS	BLUE	RED	WHITE
	15	10	RIB

LOT

- A Centerpiece or doily
- B Handkerchief
- C Lunch cloth, tablecloth or placemats
- D Pillow cases, tatted or lace edge
- E Battenberg
- F Knitted
- G Bobbin lace
- H Mixed Techniques
- I Other

CLASS 3 - CREATIVE EMBROIDERY & STITCHERY BY HAND

(Cut work, Cross Stitch, Hardanger, Smocking, Brazilian, etc.)

POINTS	BLUE	RED	WHITE
	15	10	RIB

LOT

- A Centerpiece
- B Dress or Clothing
- C Dresser scarf
- D Guest towels, set of 2
- E Lunch cloth
- F Picture or wall hanging, over 16" (longest dimension)
- G Picture (or wall hanging), under 16" (longest dimension)
- H Pillow
- I Pillow cases
- J Placemats, set of 2
- K Tablecloth
- L Towels, set of 2
- M Beadwork
- N Jewelry
- O Silk embroidery
- P Mixed techniques
- Q Any one other

CLASS 4 - FREE MOTION MACHINE EMBROIDERY

This class limited to work done FREE MOTION on a sewing machine designed for normal sewing. Additional lots may be assigned by Superintendent as needed.

POINTS	BLUE	RED	WHITE
	15	10	RIB

LOT

- A Thread painting - straight stitch
- B Thread painting - side stitch
- C Thread painting - combo straight/side
- D Cutwork
- E Bobbin work
- F Lace making
- G Trapunto
- H Beading
- I Mixed-media (hand painted background with thread enhancement, stamping, dying, etc.)
- J Manipulated Fabric Color (i.e. crayons, paint sticks, hand dying, etc.)
- K Design Enhancement (i.e. highlighting, thread sketching, etc.)
- L Silk ribbon by machine
- M Mini Art Quilts (i.e. using heavy doublesided fusible stabilizers, or batting)
- N Free Motion Quilting
- O Appliqué
- P Other Technique

CLASS 5 - PROGRAMMED STITCHES OR NON-FREE MOTION

(Computerized Machine Embroidery)

This class limited to work done NON-FREE MOTION with either a sewing machine designed for normal sewing, or on a special embellishment machine. (Programmed stitches, cams, computer cassettes)

POINTS	BLUE	RED	WHITE
	15	10	RIB

LOT

- A Quilt
- B Wall Hanging
- C Embellished garment, constructed by exhibitor
- D Embellished garment, ready made
- E Table linens (e.g. table cloth, napkins, placements & runners)
- F Kitchen de cor/accessories
- G Bedroom de cor
- H Bathroom de cor
- I Holiday
- J Other

CLASS 6 - HAND KNITTING

POINTS	BLUE	RED	WHITE
Lots A-C	20	15	RIB
Lots D-Q	15	10	RIB

LOT

- A Coat, women's
- B Dress, women's one or two piece
- C Sweater, adult
- D Booties or cap, infant's or child's
- E Centerpiece
- F Dress, infant or child
- G Gloves or mittens
- H Pillow
- I Shawl, bed jacket or stole
- J Sweater or jacket, infant or child
- K Sweater set, infant's or child's (3-5 pieces)
- L Vest
- M Hat
- N Socks
- O Beadwork
- P Scarf
- Q Any one other

CLASS 7 - MACHINE KNITTING

POINTS	BLUE	RED	WHITE
	15	10	RIB

LOT

- A Dress, one piece
- B Dress, two piece
- C Sweater
- D Poncho
- E Afghan
- F Gloves
- G Cap
- H Scarf
- I Socks
- J Necktie
- K Beadwork
- L Any one other

CLASS 8 - CROCHETING

POINTS	BLUE	RED	WHITE
Lots A-C	20	15	RIB
Lots D-W	15	10	RIB

LOT

- A Coat
- B Dress or suit
- C Sweater, adult
- D Buffet or vanity set
- E Centerpiece
- F Doily
- G Dresser scarf
- H Gloves or mittens
- I Pillow
- J Pillow cases, crochet edging, set of 2
- K Placemats, set of 2
- L Poncho, stole or shrug
- M Dress, child's or infant's
- N Sweater set, child's or infant's (3-5 pieces)
- O Lunch cloth or table runner
- P Table cloth
- Q Vest
- R Hat
- S Beadwork
- T Jewelry
- U Scarf
- V Booties or Baby accessories
- W Any one other

CLASS 9 - APPLIQUE

POINTS	BLUE	RED	WHITE
	15	10	RIB

LOT

- A Apron
- B Lunch cloth or placemats
- C Pillow cases- set of 2 – machine
- D Pillow case – 1 – machine
- E Pillow cases- set of 2 – hand stitched
- F Pillow case – 1 – hand stitched
- G Tea towels, set of 2
- H Towels, set of 2
- I Pillow – machine
- J Pillow – hand stitched
- K Any one other

CLASS 10 – AFGHANS, LAP ROBES & THROWS

POINTS	BLUE	RED	WHITE
	15	10	RIB

LOT

- A Crocheted
- B Knitted
- C Machine knitted
- D Afghan stitch
- E Afghan with embroidery
- F Faux Chenille
- G Mixed techniques
- H One other different kind

CLASS 11 - BEDSPREADS

POINTS	BLUE	RED	WHITE
King/Queen/Double	25	20	RIB
Single/Youth/Crib	15	10	RIB

LOT

- A Crocheted
- B Knitted
- C Pieced
- D Appliquéd
- E Embroidery
- F Machine knit
- G Commercial preprint
- H One other different kind

CLASS 12 - RUGS

POINTS	BLUE	RED	WHITE
	20	15	RIB

LOT

- A Braided
- B Crochet
- C Hooked
- D Needle-punch
- E Needlepoint
- F Cross Stitch
- G Any one other

CLASS 13 – MISCELLANEOUS NEEDLEWORK

POINTS	BLUE	RED	WHITE
A Doll (crocheted, knitted or machine knitted)	12	9	RIB
B Toy or animal (crocheted, knitted or machine knitted)	12	9	RIB
C Holiday novelty, any holiday	10	7	RIB
D Plastic Canvas	10	7	RIB
E Doll clothes	10	7	RIB
F Any one other	10	7	RIB

QUILT BLOCK CONTEST!

Superintendent - Linda Becker (LindaB68@yahoo.com)

* **Quilt Block Kit** available for \$7.95 at **Ruby Street Quiltworks**

100 Ruby Street SE, Tumwater, WA 98501, phone (360) 236-0596.

This packet contains two (2) fat quarters (and two fat eighths). You can use this fabric to make any block pattern from the fabrics, but you cannot add any other fabric from outside the packet. You are required to use some of each fabric in the packet for each block. Your block may be made using any construction technique. The work may be done by hand or machine. Embellishments are not allowed. The minimum entry is one block and packets may make more than one block. You may purchase as many packets as you would like and enter as many times as you wish. Fabric in packets **must be pre-washed. Only blocks 12 1/2" square unfinished will be accepted for judging.**



* **Your quilt block will be judged** on appearance, construction, creativity in use of the challenge fabric and design. Blocks will be displayed in the Heritage Hall during the Fair. This is also where ribbons, judge's comments and blocks for drawing winners will be available for pick up on Monday, August 8th from 3-7 pm. **NO LATE ENTRIES.**

* **Bring your (unquilted) square(s)**, along with the attached Fair entry cards, back to Ruby Street Quiltworks anytime before July 25th, or to Heritage Hall at the Thurston County Fairgrounds on Monday, July 25th from 3-7 pm.

* **Prizes, prizes, prizes:** Each participant who turns in a completed block will receive a coupon for (40% off one item at) Ruby Street Quiltworks (limit one coupon per packet that is purchased). At the Fair, entries will be awarded Blue, Red, and White ribbons, along with judge's comments. In addition, with the exception of twelve blocks which will be kept by the Thurston County Fair to be used in a raffle quilt during the following year's Fair, names from contest participants will be drawn for the remaining lots of 12 blocks (could be less than 12).

DIVISION G - QUILTS

(STATE ON ENTRY FORM & CARD IF 1. TOP BY ENTRANT/QUILTED BY ANOTHER OR 2. QUILTED BY ENTRANT/TOP BY ANOTHER).

Please cover entrant names on labels. Please state quilt dimensions on entry card. (Small non-standard quilts such as lap quilts or throws will be grouped with sub-lot C, crib/youth)

Quilt size standards are based on the following mattress standards plus 20" to 25" in length and width:

- Crib – 23" X 46"
- Youth – 32" X 66"
- Single – 39" X 75"
- Double – 54" X 75"
- Queen – 60" X 80"
- King – 78" X 80"

(THE FOLLOWING LOTS WILL BE USED FOR CLASSES 1 THROUGH 5)

LOT

- A Pieced quilt, cotton
- B Pieced quilt, wool
- C Pieced quilt, silk
- D Appliquéd quilt
- E Plain quilted (whole cloth)
- F Printed quilted (whole cloth)
- G Embroidered quilt (by hand)
- H One other different kind

CLASS 1 - QUILTS HAND PIECED & HAND QUILTED

POINTS	BLUE	RED	WHITE
A King/Queen	30	25	Rib
B Double/Single	25	20	Rib
C Youth/Crib	20	15	Rib

CLASS 2 - QUILTS MACHINE PIECED & HAND QUILTED

Use same lots as Class 1

POINTS	BLUE	RED	WHITE
A King/Queen	25	20	RIB
B Double/Single	20	15	RIB
C Youth/Crib	15	10	RIB

CLASS 3 - QUILTS HAND PIECED & MACHINE QUILTED

Use same lots as Class 1

POINTS	BLUE	RED	WHITE
A King/Queen	25	20	RIB
B Double/Single	20	15	RIB
C Youth/Crib	15	10	RIB

CLASS 4 - QUILTS MACHINE PIECED & MACHINE QUILTED

Use same lots as Class 1

POINTS	BLUE	RED	WHITE
A King/Queen	20	15	RIB
B Double/Single	17	12	RIB
C Youth/crib	15	10	RIB

CLASS 5 - QUILTS TIED

Use same lots as Class 1

POINTS	BLUE	RED	WHITE
A King/Queen	20	15	RIB
B Double/Single	17	12	RIB
C Youth/Crib	15	10	RIB

CLASS 6 - QUILTED WALL HANGINGS OR PILLOWS & MINIATURES

POINTS	BLUE	RED	WHITE
A Wall hangings over 9 sq ft	20	15	RIB
B All other entries	15	10	RIB

LIMIT 2 per lot

LOT

- A Wall hanging – appliquéd
- B Wall hanging – hand pieced & hand quilted
- C Wall hanging – hand pieced & machine quilted
- D Wall hanging – machine pieced & hand quilted
- E Wall hanging – machine pieced & machine quilted
- F Pillow – hand pieced & hand quilted
- G Pillow – hand pieced & machine quilted
- H Pillow – machine pieced & hand quilted
- I Pillow – machine pieced & machine quilted
- J Miniature – hand pieced & hand quilted
- K Miniature – hand pieced & machine quilted
- L Miniature – machine pieced & hand quilted
- M Miniature – machine pieced & machine quilted
- N Miniature – whole cloth
- O Commercial Preprinted
- P Table Runner
- Q Candle Runner
- R Holiday
- S Any one other

CLASS 7 - QUILTS MADE BY GROUPS OR ORGANIZATIONS

POINTS	BLUE	RED	WHITE
	20	15	RIB

Use same lots as Division G, Class 1

DIVISION H - OPEN CLASS SEWING

Maximum two entries per lot.

Superintendent –To be announced

CLASS 1 - CLOTHING

POINTS	BLUE	RED	WHITE
Lot A-C	30	25	RIB
LOT D	25	20	RIB
LOT E-W	20	15	RIB

- A Evening and bridal wear
- B Tailored suit
- C Tailored coat or jacket
- D Non-tailored suit, coat or jacket
- E Dresses
- F Jeans, slacks, shorts
- G Shirt or blouse
- H Night wear and lingerie
- I Vest
- J Outdoor wear
- K Active wear (sweatshirts, T-shirts)
- L Child's dress or jumper
- M Child's blouse or shirt
- N Child's jeans, slacks or shorts
- O Child's coat
- P Baby garments
- Q Recycled clothing
- R Clothing made from pre-quilted fabric
- S Stretch/active wear
- T Christening dress
- U Skirt
- V Clothing made from pre-printed fabric-commercial
- W Other than classified, specify item

CLASS 2 – SERGER

Lots same as Class 1

POINTS	BLUE	RED	WHITE
Lot A-C	30	25	RIB
LOT D	25	20	RIB
LOT E-W	20	15	RIB

CLASS 3 - EMBELLISHED GARMENTS

POINTS	BLUE	RED	WHITE
A. Sub-lot 1 (Constructed by entrant)	25	20	RIB
B. Sub-lot 2 (Ready made garment)	20	15	RIB

LOT

- A Appliqué
- B Hand embroidery
- C Automatic machine embroidery
- D Free-motion machine embroidery
- E Quilting techniques
- F Combination of techniques
- G Manipulated design (i.e. pleating, woven strips, smocking)
- H Surface design (i.e. stenciling, painting, dyeing, marbling)
- I Faux Chenille
- J Mixed media e.g. knit & leather, fabric w/knit and or leather
- K Other techniques, specify

CLASS 4 - HOME DECOR

POINTS	BLUE	RED	WHITE
	15	10	RIB

LOT

- A Christmas & holiday decor
- B Baskets, lined (must be sewn)
- C Pillows
- D Curtains
- E Table linens
- F Kitchen items
- G Household items
- H Aprons
- I Other

CLASS 5 - MISCELLANEOUS SEWING

POINTS	BLUE	RED	WHITE
	15	10	RIB

LOT

- A Toys & dolls
- B Totes & purses
- C Doll clothes
- D Costume
- E Recycled
- F Scarves, ties, belts, hats
- G Faux Chenille technique
- H Other

DIVISION I - OPEN CLASS FIBER ARTS

Superintendent – Kate Jantz-Koprivnik – talkingthreadsmedia@gmail.com

Maximum 2 entries per lot

CLASS - 1 HANDWEAVING (Specify if woven with commercial yarn or handspun yarn.)

Sample mini-skein of yarn to accompany each exhibit, if yarn is hand spun.

POINTS	BLUE	RED	WHITE
Lot A-B	30	25	RIB
Lot C-P	25	20	RIB
Lot Q-S	20	15	RIB

LOT

- A Jacket or coat
- B Other constructed garment
- C Shawl, stole or poncho
- D Wall hanging or tapestry
- E Pillow
- F Afghan or blanket
- G Table scarf or runner
- H Placemats (sets of 2 min)
- I Rug
- J Yardage, commercial yarn
- K Bath linens
- L Table linens (tablecloth, napkins)
- M Kitchen linens (towel, dish cloth, & accessories)
- N Scarf
- O Basket (natural materials)
- P Toys (children)
- Q Toys (pet)
- R Braiding (e.g. Kumihimo)
- S Other

CLASS 2 - HANDSPINNING COMMERCIALLY PREPARED FIBER

(e.g. professionally washed and carded or from roving, brick, etc.)

Attach min. 3" (finished) sample showing intended use of yarn.

POINTS	BLUE	RED	WHITE
	20	15	RIB

LOT

- A Handspun wool
- B Handspun mohair
- C Handspun angora
- D Handspun silk
- E Handspun other animal fiber
- F Handspun exotic fiber (animal, plant or man made, e.g. camel, soysilk, tencel)
- G Handspun cotton
- H Handspun flax
- I Handspun other plant fiber
- J Handspun mixed animal fiber
- K Handspun mixed other fibers
- L Handspun Chieangora (all breeds of dog hair)
- M Handspun novelty yarn (slub,knot,cable, Navaho plied)
- N Handspun commercially dyed
- O Handspun hand dyed
- P Other

CLASS 3 - HANDSPINNING HAND PREPARED FIBER

Attach min. 3" (finished) sample showing intended use of yarn.

POINTS	BLUE	RED	WHITE
	25	20	RIB

LOT

- A Handspun wool
- B Handspun mohair
- C Handspun angora
- D Handspun silk (prepared by spinner from cocoons)
- E Handspun other animal fiber
- F Handspun exotic fiber (animal or plant, e.g. camel, alpaca, flax)
- G Handspun cotton
- H Handspun flax
- I Handspun other plant fiber
- J Handspun mixed animal fiber
- K Handspun mixed other fiber
- L Handspun Chieangora (all breeds of dog hair)
- M Handspun novelty yarn (slub, knots, cable, Navaho plied)
- N Handspun commercially dyed
- O Handspun hand dyed yarn
- P Other

CLASS 4 - KNITTED ARTICLES, HANDSPUN YARN

Yarn spun by exhibitor

Attach mini-skein of yarn, if possible.

POINTS	BLUE	RED	WHITE
Lots A-D	30	25	RIB
Lots E-V	25	20	RIB
Lots W-Y	20	15	RIB

LOT

- A Jacket or coat, adult
- B Sweater, pullover, adult
- C Sweater, cardigan, adult
- D Other garment or set, adult
- E Shawl, stole or poncho
- F Jacket or coat, child or infant
- G Pullover sweater, child or infant
- H Cardigan sweater, child or infant
- I Other garment or set, child or infant
- J Slippers, adult
- K Booties, slippers, child or infant
- L Gloves or mittens
- M Vest
- N Hat or cap
- O Scarf
- P Socks
- Q Rug
- R Purse or bag
- S Pillow
- T Afghan, lap robe or blanket
- U Runner, doily or tablecloth
- V Toys, pet
- W Toys, children
- X Dish cloth, pot holder
- Y Other

CLASS 5 - CROCHETED ARTICLES, HANDSPUN YARN

Yarn spun by exhibitor

Attach mini-skein of yarn.

POINTS	BLUE	RED	WHITE
Lots A-D	30	25	RIB
Lots E-V	25	15	RIB
Lots W-Y	15	10	RIB

LOT

- A Jacket or coat, adult
- B Sweater, pullover, adult
- C Sweater, cardigan, adult
- D Other garment or set, adult
- E Shawl, stole or poncho
- F Jacket or coat, child or infant

- G Pullover sweater, child or infant
- H Cardigan sweater, child or infant
- I Other garment or set, child or infant
- J Slippers, shoes, adult
- K Booties, slippers, child or infant
- L Gloves or mittens
- M Vest
- N Hat or cap
- O Scarf
- P Socks
- Q Rug
- R Purse or bag
- S Pillow
- T Afghan, lap robe or blanket
- U Runner, doily or tablecloth
- V Toys, pet
- W Toys, children
- X Dish cloth, pot holder
- Y Other

CLASS 6 - FELTING

POINTS	BLUE	RED	WHITE
Lots A-D, H-K, O	30	25	RIB
Lots E-G, L-N, P-R	25	15	RIB

LOT

- A Hand felted garment
- B Hand felted wall hanging
- C Hand felted slippers, shoes
- D Hand felted purse or bag
- E Hand felted other item
- F Hand felted child's toy
- G Hand felted pet toy
- H Machine felted garment
- I Machine felted wall hanging
- J Machine felted slippers, shoes
- K Machine felted purse or bag
- L Machine felted other item
- M Machine felted child's toy
- N Machine felted pet toy
- O Needle felted home décor
- P Needle felted other item
- Q Needle felted pet toy
- R Needle felted Child's toy

CLASS 7 - RUG HOOKING USING HANDSPUN

Yarn spun by exhibitor

POINTS	BLUE	RED	WHITE
Lots B, E, & H	30	25	RIB
ALL OTHER LOTS	25	15	RIB

LOT

- A Punch hook, commercial design rug or wall hanging
- B Punch hook, original design rug or wall hanging
- C Punch hook, any one other item
- D Locker hook, commercial design rug or wall hanging
- E Locker hook, original design rug or wall hanging
- F Locker hook, any one other item
- G Nantucket hook, commercial design rug or wall hanging
- H Nantucket hook, original design rug or wall hanging
- I Nantucket hook, any one other item
- J Other

CLASS 8 - OTHER NEEDLEWORK USING HANDSPUN

Yarn spun by exhibitor

POINTS	BLUE	RED	WHITE
	30	25	RIB

LOT

- A Embroidery, Crewel or canvas work
- B Lace (bobbin, tatting, knit, crochet)
- C Knitted article from roving
- D Crocheted article from roving
- E Other

DIVISION J - OPEN CLASS BAKING

Exhibitor's attention is called to General Fair Rules.

ENTRY TIMES: BAKING ENTRIES will be accepted Monday, Aug. 1st, 3 - 7 pm only. NO LATE ENTRIES.

RULES:

1. Only one entry in any one lot.
2. No commercial mixes may be used except in special indicated lots.
3. Products entered in baking will be judged for appearance, texture and flavor.
4. Include recipe on a 3x5 file card. Print exhibitor number in upper right corner. Juniors (under 18) must list age.
5. Pies should be exhibited in 8" disposable container. Do not enter pies made with dairy or egg products which require refrigeration.
6. All food entries become the property of the Fair and will not be returned.
7. A single recipe cannot be entered more than once within one family.
8. The same recipe cannot be used 2 years in a row.
9. Must enter minimum of 4 cookies.

If you wish to receive your ribbons and judging sheets and are not available to pick them up on Monday following the fair, please provide a self addressed, business size envelope with 2 oz. postage (63 cents)

WASHINGTON ASSOCIATION OF WHEAT GROWERS BAKING AWARD

To promote the use of wheat products, the Washington Association of Wheat Growers offers the following awards in the baking category.

1st place – Youth and Adult

2nd place – Youth and Adult

RED STAR YEAST AWARD.

A variety of baking aids will be awarded in Open Class Baking to youth and adult entries.

FAIR MANAGER'S CHOCOLATE CAKE CONTEST THURSDAY, AUGUST 4TH



Bring your best chocolate cake, any size, any shape, frosted or not, to be judged by our Fair Manager, Rick Storvick and his team of experts. Each contestant will receive FREE admittance to the fair (parking fees not waived). Youth and adult entry winners will receive ribbons and prizes. Please bring cakes to Expo Hall from noon and 2 pm. Please include recipe on a 3x5 card with name, address, and phone number. Juniors (under 18) list age. Samples will be served to patrons. Final judging at 4 pm in Expo Center.

THE COOKIE CONTEST FRIDAY, AUGUST 5TH

Yes, there are other cookies besides chocolate chip. Bring your favorite cookie recipe on Friday and earn the honor of being named Best Cookie Baker of Thurston County. Each contestant will receive free admision to the fair. Youth and adult winners will receive ribbons and prizes. Bring cookies to the Expo Center on Friday, August 5th, from noon to 2 pm. Please include name, address, phone number, and a copy of the recipe. Pre-Judging will start at 2 pm with final judging at 4 pm. Cookies cannot need refrigeration and please use paper plates, bring between 6 - 10 cookies.

BERRY PIE CONTEST SATURDAY, AUGUST 6th

Bring your berry best berry pie to Expo Center on Saturday between Noon and 2 pm. Contestant will receive FREE admittance to the fair (parking fees not waived). Final judging at 4 pm at the Expo Center. The main ingredient must be berries and must not need refrigeration. Pie must not contain cream, cream cheese, custard, Jell-O, or eggs. Include your recipe with your name, address and phone number on a 3x5 file card. Judging criteria: flaky, tender crust, berry filling (distinctive of fruit used), fruit intact and tender. Categories are Adult and Youth (18 years and under); Pie categories are single berry or mixed berry. Youth and adult winners will receive ribbons and monetary prizes, donated by Spooner's Berry Farms. Pies should be baked in a 8" or 9" disposable round pie tin. Two crust pies may have lattice work or other on top. No tarts, popover, or turnovers will be accepted. Prizes will be announced immediately following the judging. (Need not be present to win.) Pie slices will be sold after the contest and proceeds given to the Thurston County Food Bank. Prize pies will be auctioned off to the highest bidder.

CUP CAKE CONTEST SUNDAY, AUGUST 7th

Each contestant will receive free admission to the fair (parking fees not included). Youth and adult entry winners will receive ribbons and prizes. Bring cakes to the Expo Center from noon - 2 pm. Prejudging will be between 2-4 pm. Final judging of cupcakes will begin at 4 pm in the Expo Center. Cupcakes should not need refrigeration. Please provide a recipe (on 3 x 5 card) with name, phone number, and address with each entry. Cupcakes will be sold after the contest and proceeds given to the Thurston County Food Bank. Please bring a minimum of four cupcakes for judging. .

CLASS 1 - YEAST BREAD

1/4 loaf (with end crust) or 3 rolls

POINTS	BLUE	RED	WHITE
	15	10	RIB

LOT

- A White
- B Whole Wheat
- C French, Rye or Sourdough
- D Dinner rolls
- E Sweet rolls/pastries
- F Specialty Bread
- G Holiday Bread
- H Diet Restricted (for gluten intolerance; diabetes, or allergies - specify on recipe card)
- I Bread maker
- J One other

CLASS 2 - QUICK BREAD

1/4 loaf (with end crust) or 4 muffin/biscuit

POINTS	BLUE	RED	WHITE
	10	5	RIB

LOT

- A Fruit
- B Nut
- C Vegetable
- D Coffee Cake
- E Muffins
- F Biscuits
- G Healthy Choice (5 grams fat or less & 150 calories or less per serving)
- H Made from a mix + 2 or more extra ingredients
- I Diet restricted
- J Any one other

CLASS 3 - CAKE

1/4 cake - frosted or plain

POINTS	BLUE	RED	WHITE
	10	5	RIB

LOT

- A Angel Food, Chiffon or Sponge
- B Chocolate
- C Fruit (applesauce, etc.)
- D Vegetable (carrot, etc.)
- E Pound
- F White or Yellow
- G Cupcakes
- H Made from a mix + 2 or more extra ingredients
- I Diet restricted
- J Any one other

CLASS 4 - DECORATED CAKES & COOKIES

Real cake does not have to be used as a base.

POINTS	BLUE	RED	WHITE
	20	15	RIB

LOT

- A Birthday
- B Holiday
- C Fair Mascot
- D Wedding
- E One other
- F Professional

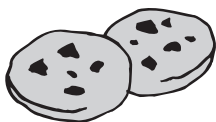
CLASS 5 - CANDIES

Four Pieces

POINTS	BLUE	RED	WHITE
	10	5	RIB

LOT

- A Divinity
- B Fondant
- C Caramel
- D Peanut brittle
- E Fudge, chocolate
- F Fudge, non-chocolate
- G Penuche
- H Fancy
- I Molded
- J Diet restricted
- K One other



CLASS 6 - COOKIES

4 cookies each entry

POINTS	BLUE	RED	WHITE
	10	5	RIB

LOT

- A Bar
- B Drop
- C Chocolate Chip
- D Shaped or pressed
- E Filled
- F Decorated
- G Biscotti
- H Healthy Choice (3 grams or less fat & 100 calories or less per serving)
- I Partner Cookie, baked by an adult and child. Please list age of child.
- J Diet Restricted (May be from a mix with 2 or more added ingredients)
- K One other

CLASS 7 - PIES

Use DISPOSABLE 8" pie tin. No pies that require refrigeration will be accepted. Remember to include recipe.

POINTS	BLUE	RED	WHITE
	10	5	RIB

LOT

- A Apple
- B Berry
- C Cherry
- D Other one fruit
- E One other

CLASS 8 - BAKING WITH HONEY

Special prize awarded by the Olympia Bee Keepers Association, including honey cookbooks, honey, and more for best baked goods made with honey. Honey must be used as the main sweetener with no processed sugars such as white, brown, or powdered.

POINTS	BLUE	RED	WHITE
	10	5	RIB

LOT

- A Yeast Bread
- B Quick Bread
- C Cake
- D Candy
- E Cookies
- F Pies
- G Other

DIVISION K - OPEN CLASS FOOD PRESERVATION

ENTRY TIMES: Monday, July 25, 3 - 7 pm, and Monday, Aug. 1, 3 - 7 pm. Honey may be entered only Aug. 1st. Exhibits must be picked up Monday, August 8, 3 - 7 pm or will be disposed of. No one judging a Division may enter in that Division.

RULES – PLEASE READ CAREFULLY

1. Jars - Entries must be exhibited in Standard clear canning jars, except for vinegar.
2. Lids - Standard two-piece vacuum caps and lids must be used. Remove screw bands before entry.
3. Processing methods should follow WSU bulletins No. PNW 172 Canning Vegetables, PNW 300 Canning Tomato Products, PNW 194 Canning Seafood, PNW 199 Canning Fruits, PNW 355 Pickling Vegetables, PNW 361 Canning Meat, Poultry & Game, PNW 395 Salsa Recipes for Canning, EB 1665 Let's Preserve Jelly, Jam and Spreads, EB 976 Syrups from Washington Fruits, available from WSU Extension, Thurston County (786-5445), or The Ball Blue Book Edition 1 printed 1996 or later; NOTE: Copies of Ball and Kerr Canning books printed before 1994 have out-of-date, incorrect, and unsafe recommendations. DISCARD! **The USDA guide available at http://www.uga.edu/nchfp/publications/publications_usda.html is also an acceptable recipe source.** Recipe cards must be included (as indicated at lot description), as well as label information with name of publication used for canning listed (Pectin manufacturer recipe inserts are acceptable).
4. All products will be judged by the above references. Jars without labels and processing time and method, under-processed foods, or foods not listed in above references will not be accepted or will be disqualified.
5. Each exhibit must be processed after August 1 of previous year and labeled. Include on the label:
 - a. name of product
 - b. processing method (pressure or boiling water)
 - c. method of packing (hot or cold & pretreatment)
 - d. amount of time processed
 - e. date of processing
 - f. for tomatoes - amount of citric acid or lemon juice added
 - g. publication used
6. In the interest of safety, YOUTH entrants MUST be assisted by an adult in hot processing. Recipe chosen and appropriate execution of preparation and packaging done by YOUTH entrant.
7. Can seafood, salsa, and relish in half-pint or pint jars only.
8. All jams and jellies must be exhibited in half-pint or pint jars only. We can no longer accept jams and jellies in pot-belly jelly jars.

POINTS	BLUE	RED	WHITE
	10	5	RIB

CLASS 1 - CANNED FRUITS

CLASS 2 - CANNED VEGETABLES

CLASS 3 - PICKLES AND SAUCES

LOT

- A Sauces
- B Pickles - fruit
- C Pickles - vegetable (-recipe)
- D Pickles - mixed (-recipe if part vegetable)
- E Relishes (-recipe)
- F Pickles – Bread & Butter
- G Salsa (-recipe)
- H Other (-recipe if part vegetable)

CLASS 4 - SOFT SPREADS

LOT

- A Jams
- B Jellies
- C Fruit butter
- D Conserve
- E Marmalade
- F Syrup
- G Other

CLASS 5 - MEATS AND FISH

LOT

- A Poultry
- B Domestic meat
- C Game meat
- D Fish
- E Shellfish
- F Other

CLASS 6 - DEHYDRATED FOODS

All dried food entries must be exhibited in pint or half-pint canning jars. The jar will be opened when judged to determine the correct amount of dryness in the product.

Label jar with the following information (label needs to be attached)

- a. Name of product
- b. Type of pretreatment, if any
- c. Method of drying - e.g. air dry, oven, solar, dehydrator
- d. Amount of time for drying
- e. Date of drying

POINTS	BLUE	RED	WHITE
	10	5	RIB

LOT

- A Fruits
- B Vegetables
- C Leathers
- D Jerky
- E Soup mixes
- F Herbs
- G Other

CLASS 7 - HOMEMADE SOAPS

Please bring recipe on a 3X5 card with name, address, and phone number.

POINTS	BLUE	RED	WHITE
	10	5	RIB

LOT

- A 2 bars hand soap
- B 2 bars laundry soap
- C 1 pint of soap granules
- D Glycerin soaps
- E 2 bars animal shampoo soaps
- F 2 bars milk soaps
- G Other

CLASS 8 - HONEY

Entry time: August 1, 3 - 7 pm only. For all lots, submit three one (1) pound Queenline honey jars (glass or plastic). Color classes to be determined by the show coordinator prior to judging.

POINTS	BLUE	RED	WHITE
	10	5	RIB

LOT

- A Water White
- B Extra White
- C White
- D Extra Light Amber
- E Light Amber
- F Amber
- G Dark Amber
- H Dark

CLASS 9 - Vinegars

Vinegars can be entered in either quart or pint canning jars, sealed clear glass decorator bottles, corked and waxed. Recipe must be included.

POINTS	BLUE	RED	WHITE
	10	5	RIB

LOT

- A Clear
- B Flavored
- C Herb
- D Spiced
- E Other

DIVISION L - BEVERAGES

Chris Enrico - Superintendent, (360)459-4759

1. Entry times are 3 pm to 7 pm Tuesday, July 26, at the Fairgrounds.
2. RECIPE REQUIRED FOR ALL BEER ENTRIES
3. WINE ENTRIES NEED TO LIST ALL INGREDIENTS
4. NO LABELS ON ANY BOTTLES
5. All bottles for wine must be standard wine or champagne bottles, 4/5ths in size and fitted with a cork. Sparkling wine corks must be wired on or (the bottle) capped. One bottle per entry.
6. All bottles for beer, mead or cider must be 11-12 oz. of brown glass, with a metal cap. A minimum of two bottles per entry. Kolsch-style (ceramic top) bottles WILL NOT be accepted.
7. Persons entering the competition are responsible for entering their entries in the correct class and lot. Assistance, if needed, will be provided at the time of entry.
8. Each beer, mead or cider entered will be judged on its own merits. Judging points will be based on Bouquet, Aroma, Appearance, Flavor, Body, Drinkability, and Overall Impression.
9. Each wine entered will be judged on its own merits. Judging points will be based on Bouquet, Aroma, Appearance, Flavor, Body, Drinkability, Finish and Overall Impression.
10. Entries are to be picked up Monday, August 3 between 3 and 7 pm.
11. If the entrant has any questions prior to entry day as to which category their entry fits, please call the superintendent at the above phone number.

Go to www.bjcp.org for beer style guideline information as well as a recipe form for beers.

POINTS	BLUE	RED	WHITE
	10	5	RIB

CLASS 1 - ENGLISH PALE ALE

- A Standard/Ordinary Bitter
- B Special/Best or Premium Bitter
- C Extra Special/Strong Bitter
- D (English Pale Ale)

CLASS 2 - SCOTTISH AND IRISH ALE

- A Scottish Light 60/
- B Scottish Heavy 70/
- C Scottish Export 80/
- D Irish Red Ale
- E Strong Scotch Ale

CLASS 3 - AMERICAN ALE

- A American Pale Ale.
- B American Amber Ale
- C American Brown Ale

CLASS 4 - ENGLISH BROWN ALE

- A Mild
- B Southern English Brown Ale
- C Northern English Brown Ale

CLASS 5 - PORTER

- A Brown Porter
- B Robust Porter
- C Baltic Porter

CLASS 6 - STOUT

- A Dry Stout
- B Sweet Stout
- C Oatmeal Stout
- D Foreign Extra Stout
- E American Stout
- F Imperial Stout

CLASS 7 - INDIA PALE ALE

- A English IPA
- B American IPA
- C Imperial IPA

CLASS 8 - BELGIAN AND FRENCH ALE

- A Witbier
- B Belgian Pale Ale
- C Saison
- D Biere de Garde
- E Belgian Specialty Ale

CLASS 9 - SOUR ALE

- A Berliner Weisse
- B Flanders Red Ale
- C Flanders Brown Ale/Oud Bruin
- D Straight (unblended) Lambic
- E Gueuze
- F Fruit Lambic

CLASS 10 - BELGIAN STRONG ALE

- A Belgian Blond Ale
- B Belgian Dubbel
- C Belgian Tripel
- D Belgian Golden Strong Ale
- E Belgian Dark Strong Ale

CLASS 11 - STRONG ALE

- A Old Ale
- B English Barley Wine
- C American Barley Wine

CLASS 12 - LIGHT LAGER

- A Light American Lager
- B Standard American Lager
- C Premium American Lager
- D Munich Helles
- E Dortmunder Export

CLASS 13 - PILSNER

- A German Pilsner
- B Bohemian Pilsner
- C Classic American Pilsner

CLASS 14 - EUROPEAN AMBER LAGER

- A Vienna Lager
- B Oktoberfest/Maerzen

CLASS 15 - DARK LAGER

- A Dark American Lager
- B Munich Dunkel
- C Schwarzbier

CLASS 16 - BOCK

- A Maibock/Helles Bock
- B Traditional Bock
- C Doppelbock
- D Eisbock

CLASS 17 - LIGHT HYBRID BEER

- A Cream Ale
- B Blond Ale
- C Kolsch
- D American Wheat or Rye Beer

CLASS 18 - AMBER HYBRID BEER

- A North Germany Altbier
- B California Common Beer
- C Duesseldorf Altbier

CLASS 19 - GERMAN WHEAT AND RYE BEER

- A Weizen/Weissbier
- B Dunkelweizen
- C Weizenbock
- D Orggenbier

CLASS 20 - FRUIT BEER

- A Fruit Beer

CLASS 21 - SPICE/HERB/VEGETABLE BEER

- A Spice/Herb/Vegetable Beer
- B Christmas/Winter Specialty
- C Spiced Beer

CLASS 22 - SMOKE FLAVORED AND WOOD AGED BEER

- A Classic Rauchbier
- B Other Smoked Beer
- C Wood-Aged Beer

CLASS 23 - SPECIALTY BEER

- A Specialty Beer

CLASS 24 - TRADITIONAL MEAD

- A Dry Mead
- B Semi-Sweet Mead
- C Sweet Mead

CLASS 25 - MELOMEL (FRUIT MEAD)

- A Cyser (Apple Melomel)
- B Pyment (Grape Melomel)
- C Other Fruit Melomel

CLASS 26 - OTHER MEAD

- A Metheglin
- B Braggot
- C Open Category Mead

CLASS 27 - STANDARD CIDER AND PERRY

- A Common Cider
- B English Cider
- C French Cider
- D Common Perry
- E Traditional Perry

CLASS 28 - SPECIALTY CIDER AND PERRY

- A New England Cider
- B Fruit Cider
- C Apple Wine
- D Other Specialty Cider or Perry

CLASS 29 - WINE

- A Grape – Red, White, Blush
- B Fruit or Vegetable
- C Other

**DIVISION M - OPEN CLASS
HOBBIES & CRAFTS**

Juanita Aaby - Superintendent (360) 455-0079, email cjaaby@comcast.net

RULES:

1. Entries will be accepted the Saturday prior to Fair from 10 am until 4 pm;
2. Exhibits MUST be removed Monday following the Fair closing, between 3:00 and 7:00 pm.
3. Exhibits will be divided by age and ability in the following categories;
 - Primary: 9 years and younger
 - Youth: 10-17 years, not a professional
 - Adult: 18 – 61 years, not a professional
 - Senior: 62 and older, not a professional
 - Professional: any person who gives lessons or engages in the business for profit, regardless of age
4. All exhibits MUST be the work of the exhibitor.
5. Each entry will be judged on its merits and points to be considered in judging include: execution, originality and general appeal.
6. Consult the superintendent regarding space for exhibits, also for fragile items, well in advance of the Fair.
7. Collective items such as stamps or coins must have all pieces firmly attached and have a protective transparent covering unless room can be found in a case. All hanging items must be ready to hang. Collections mounted on cardboard or in a frame for hanging, should be covered with a protective transparent covering.
8. Cash premiums will be awarded for Blue and Red ribbons.
9. All afghans, needlepoint, needlework, plastic canvas, crochet, or knitted items should be entered in Home Arts on Monday, July 25, 3-7 pm.
10. To clarify any questions, please contact the superintendent or the Fair Office. Premiums will be awarded according to the degree of skill required to construct or execute the craft and shall be determined by the judge as follows:

POINTS	BLUE	RED	WHITE
Simple	10	5	RIB
Advanced	25	15	RIB

CLASS 1 - CREATIVE CRAFTS

Four entries per class

LOT

- A Wood Working
- B Fabric painting
- C Arrangements, silk, natural/dried material
- D Holiday Decorations
- E Jewelry
- F Stained or etched glass
- G Carving, all other media except wood
- H Leather crafts
- I Stuffed animals
- J Ceramics
- K All others

CLASS 2 - DOLLS

LOT

- A Porcelain
- B Soft dolls

CLASS 3 - MINIATURES

LOT

- A Dollhouses
- B All others

CLASS 4 – MODELS

LOT

- A Kit built
- B Kit conversion
- C Scratch built
- D Diorama

CLASS 5 - COLLECTIVE HOBBIES

Only one collection per person. Superintendent reserves the right to limit the number of items per collection due to space availability. Check with superintendent for special displays. A collection consists of 5 or more items.

LOT

- A Figurines (animals, salt/pepper shakers, etc.)
- B Dolls
- C Miniatures
- D All others (stamps, stickers, spoons, matchbooks, cars, etc.)

NOTE: Collection shall not exceed 36" in shelf space. Collections will be evaluated on: 1) variety of items in collection; 2) variety of media used in construction of items; 3) general interest in collection. Only named exhibitor may arrange display.

CLASS 6 - LEGOS, K-NEX

3 entries per Lot.

LOT

- A Preschool
- B 6 – 8 years
- C 9-11 years
- D 12-14 years
- E 15-17 years
- F 18 years and older

Pieces not on a base will not be excepted.

CLASS 7 - EDUCATIONAL

LOT

- A Model
- B Pictures, posters, etc.

CLASS 8 – LITERATURE

2 entries per Lot.

LOT

- A Poems
- B Short Stories

CLASS 9 – SCRAPBOOKING

Limited to one, 2 page spread.

LOT

- A Album page

CLASS 10 - PAPER CRAFTS

1 entry per Lot.

LOT

- A Rubber stamping
 - 1) Cards
 - 2) Objects (jewelry, boxes, etc.)
- B Paper Crafting
 - a. Cards
 - b. Origami
 - c. Paper Crafting

CLASS 11 - RECYCLING

All items must be handcrafted using recycled materials

LOT

- a. Clothing/ Accessories
- b. Created Art Objects
- c. Home Decor

**DIVISION N -
OPEN CLASS BALED HAY & CROPS**

Dave Kalar - Superintendent, (360)491-8609

RULES

1. Hay entered must have been produced on a farm owned or operated by the exhibitor in Thurston County.
2. All entries will be placed on display in a special Hay Booth for the duration of the Fair.
3. Bales tested over 20% moisture will be disqualified.
4. All entries must be entered by 9:00 pm the night before the first day of fair.
5. Bales will be entered under the following classes:

CLASS 1 - Grass Legume Hay - This hay shall contain a mixture at least 10% grass and 10% legume.

CLASS 2 - Legume Hay - This hay shall contain not more than 10% grass, and shall consist only of alfalfa, lotuses and clovers or mixtures thereof.

CLASS 3 - Grass Hay - This hay shall contain not more than 10% legumes.

CLASS 4 - Any other hay not listed

CLASS 5 - Grasses (up to five different varieties) to be exhibited in sheaves a minimum of 3 inches in diameter.

CLASS 6 - Legumes (up to five different varieties) to be exhibited in sheaves a minimum of 3 inches in diameter.

CLASS 7 - Grains (up to five different varieties) to be exhibited in sheaves a minimum of 3 inches in diameter.

CLASS 8 - Any others not listed

A "Grand Champion" bale will be selected from one of the Classes with a special award given.

A "Grand Champion" from each Class of crops shall be named if quality merits.

Premiums will be awarded in each Class as follows:

1st	65 points
2nd	30 points
3rd	15 points

GENERAL LIVESTOCK RULES

1. READ GENERAL RULES.
2. All animals must be registered and recorded in their respective breed associations. Registration papers must be available for inspection at all times during the show. Must have photo copy of application (if registrations have not been received.)
3. An entry fee shall be charged for individual entry. No entry fee will be charged for group entries. Entry fees are:

DAIRY	\$3.50 per head
BEEF	\$4.00 per head
SHEEP	\$2.50 per head
GOATS	\$2.50 per head
4. Each exhibitor shall be eligible to receive two (2) premiums per lot.
5. In group classes an exhibitor shall be defined as members of the same family or persons that house their animals on the same farm (except for Get of Sire and Dairy Lot Q & R.) 1 entry per exhibitor/group class.
6. Space shall be allotted to Thurston County exhibitors first; out of county exhibitors will be given second priority.
7. Entry fees must accompany entries. Please refer to division rules for entry deadlines.
8. 4-H and FFA members may enter Open Class under the following conditions:
 - a. Must comply with all Open Class Rules and entry deadline.
 - b. May only enter if there is an adult Open Class exhibitor entered and exhibiting in open class and is housed in the open class section of the facilities.
9. Each exhibitor is required to keep their own display in an orderly manner at all times that the Fair is open to the public. (10:00 am to 10:00 pm)

DIVISION O- OPEN CLASS DAIRY CATTLE

Marie Ney – Superintendent, (360)894-2284

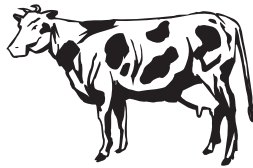
Entry Fee: \$3.50 per head

Entry Deadline: July 1

RULES

- * Please read and refer to General Rules and General Livestock Rules.
- * Must show registration papers on arrival.
- * Once the Fair officially opens:
 1. No substitutions or additions will be allowed.
 2. No refunds will be given on scratched entries.

- CLASS 1 - Ayrshire**
CLASS 2 - Brown Swiss
CLASS 3 - Guernsey
CLASS 4 - Holstein
CLASS 5 - Jersey
CLASS 6 - Milking Shorthorn



LOT

- A. Junior Calf: born after March 1, current year
- B. Intermediate Calf: born between Dec. 1, previous year and Feb. 28, current year
- C. Senior Calf: born between Sept. 1 and Nov. 30, previous year
- D. Summer Junior Yearling: born between June 1 and Aug. 31, previous year
- E. Junior Yearling: born between March 1 and May 31, previous year
- F. Winter Yearling: born between Dec. 1, two years previous and Feb. 28, previous year
- G. Senior Yearling: born between Sept. 1 and Nov. 30, two years previous

JUNIOR CHAMPION FEMALE	RIBBON
RESERVE JUNIOR CHAMPION FEMALE	RIBBON

LOT

- H. Junior Two-Year-Old: born between March 1 and Aug. 31, two years previous
- I. Senior Two-Year-Old: born between Sept. 1, three years previous and Feb. 28, two years previous
- J. Junior Three-Year-Old: born between March 1 and Aug. 31, three years previous

- K. Senior Three-Year-Old: born between Sept. 1, four years previous and February 28, three years previous
- L. Four-Year-Old: born between Sept. 1, five years previous and Aug. 31, four years previous
- M. Five-Year-Old and older: born on or before Sept. 1, five years previous
- N. Dry Cow: born before Aug. 31, three years previous

SENIOR CHAMPION	RIBBON
RESERVE SENIOR CHAMPION	RIBBON
GRAND CHAMPION	ROSETTE
RESERVE GRAND CHAMPION	ROSETTE
SUPREME CHAMPION	RIBBON

Group Lots

- O. Junior Best Three Females: all born after Aug. 31, previous year, all bred by exhibitor and at least two owned by exhibitor.
- P. Senior Best Three Females: all born before Aug. 31, previous year, all bred by exhibitor and at least two owned by exhibitor.
- Q. Dam & Daughter
- R. Produce of Dam
- S. Exhibitor's Herd: five females, two born after Aug. 31, previous year, two born before Aug. 31, previous year, one any age, all owned by exhibitor.

Payment of premiums will be based on the following points:

	1st	2nd	3rd	4th	5th
HEIFERS	140	125	110	100	85
COWS & GROUPS	245	210	175	140	105

DIVISION P - OPEN CLASS BEEF CATTLE

Marie Ney – Superintendent, (360)894-2284

Entry Deadline: July 1

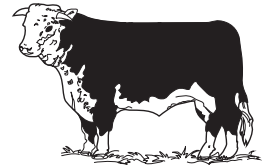
Entry Fee: \$4.00 per head

RULES:

Please refer to General Rules and General Livestock Rules.

1. A minimum of two exhibitors are required to compete for championship.
2. Herdsmanship will be judged daily.

- CLASS 1 - Angus**
CLASS 2 - Hereford
CLASS 3 - Shorthorn
CLASS 4 - Simmental
CLASS 5 - Limousin
CLASS 6 - Pinzgauer
CLASS 7 - Other



Payment of premiums will be based on the following points:

	1st	2nd	3rd	4th	5th
1-10 head/breed	280	175			
11-20 head	280	175	140	105	
21 head and over	280	175	140	105	70

LOT

- A. Junior Heifer Calf: born after Jan. 1, current year
- B. Winter Heifer Calf: born between Nov. 1 and Dec. 31, previous year
- C. Senior Heifer Calf: born between Sept. 1 and Oct. 31, previous year

CHAMPION HEIFER CALF	RIBBON
RESERVE CHAMPION HEIFER CALF	RIBBON

LOT

- D. Late Summer Yearling Heifer: born between July 1 and Aug. 31, previous year
- E. Early Summer Yearling Heifer: born between May 1 and June 30, previous year
- F. Junior Yearling Heifer: born between March 1 and April 30, previous year
- G. Early Junior Yearling Heifer: born between Jan. 1 and Feb. 28, previous year
- H. Senior Yearling Heifer: born between Sept. 1 and Dec. 31, two years previous
- I. Cow and Calf: Calf must be born after Jan. 1, current year. Calf can be shown in its individual class. This class not eligible for Champion.

CHAMPION YEARLING HEIFER	RIBBON
RESERVE CHAMPION YEARLING HEIFER	RIBBON
GRAND CHAMPION HEIFER	ROSETTE
RESERVE GRAND CHAMPION HEIFER	ROSETTE

LOT

- J. Junior Bull Calf: born after Jan. 1, current year
- K. Winter Bull Calf: born between Nov. 1 and Dec. 31, previous year
- L. Senior Bull Calf: born between Sept. 1 and Oct. 31, previous year
- CHAMPION BULL CALF RIBBON
- RESERVE CHAMPION BULL CALF RIBBON

LOT

- M. Late Summer Yearling Bull: born between July 1 and Aug. 31, previous year
- N. Early Summer Yearling Bull: born between May 1 and June 30, previous year
- O. Junior Yearling Bull: born between March 1 and April 30, previous year
- P. Early Junior Yearling Bull: born between Jan. 1 and Feb. 28, previous year
- CHAMPION YEARLING BULL RIBBON
- RESERVE CHAMPION YEARLING BULL RIBBON

LOT

- Q. Senior Yearling Bull: born between Sept. 1, and Dec. 31, two years previous
- R. Late Two-Year-Old Bull: born between May 1 and Aug. 31, two years previous
- S. Early Two-Year-Old Bull: born between Jan. 1 and April 30, two years previous
- SENIOR CHAMPION BULL RIBBON
- RESERVE SENIOR CHAMPION BULL RIBBON
- GRAND CHAMPION BULL ROSETTE
- RESERVE GRAND CHAMPION BULL ROSETTE

LOT

- T. Pair of Heifers: all owned by one exhibitor or farm
- U. Pair of Bulls: all owned by one exhibitor or farm
- V. Get of Sire: 4 animals any age, both sexes represented all by the same sire, sire to be named.
- W. Produce of Dam: 2 animals out of same dam, either sex may be shown
- X. Best Three Head: 3 animals, any age or sex, all bred and owned by one exhibitor or farm. ONE ENTRY PER EXHIBITOR.

DIVISION Q - OPEN CLASS DAIRY GOATS

Amy Akramoff - Superintendent, (360)894-0551
 Joan O'Reilly - Asst. Superintendent, (360)458-1386
 Entry Fee: \$2.50 per head
 Entry Deadline: July 1
 Show Time: 10:00 am, Saturday
 Base Date: July 31

RULES:

The Thurston County Fair is an approved ADGA show. ADGA rules will govern. Jr. does and Sr. does will be sanctioned separately. All handlers must wear WHITE in the show ring. Substitutions: ONLY SAME BREED.

1. PLEASE READ GENERAL RULES and GENERAL LIVESTOCK RULES.
2. Paper check-in will be from 4-6 pm Friday afternoon. Registration papers are needed for proof of registration and ownership.
3. Enter Friday 7-8:30 am
4. Show time is 10 am Saturday.
5. Entries are due and must be postmarked by July 1. No entry fees will be refunded after July 15 for any reason.
6. Sire and Dam name or number must be included for animals used. in group classes. Exhibitor must have entered all animals to be shown in the group classes. NO CROSS ENTRIES.
7. Milk will be disposed of in the manure waste area in a timely manner.

CLASS 1 - TOGGENBURG

CLASS 2 - OBERHASLI

CLASS 3 - ALPINE

CLASS 4 - NIGERIAN DWARF

CLASS 5 - NUBIAN

CLASS 6 - AOP

CLASS 7 - RECORDED GRADE

PREMIUM POINTS:

	1st	2nd	3rd	4th	5th
	90	75	65	50	

One entry per exhibitor in group lots.

LOT

- A. Doe Kid: born April 1 to show day
- B. Doe Kid: born between March 1 and March 31, current year
- C. Doe: under 1 year and before March 1 of current year
- D. Doe: 1 year and under 2 years - never in milk

JUNIOR CHAMPION DOE

RESERVE JUNIOR CHAMPION DOE

LOT

- E. Jr. Get of Sire: 3 females under 2 yrs never in milk, by same sire, sire to be named.
- F. Doe: 1 and under 2 years, in milk
- G. Doe: 2 and under 3 years, in milk
- H. Doe: 3 and under 4 years, in milk
- I. Doe: 4 and under 5 years, in milk
- J. Aged Doe
- SENIOR CHAMPION DOE
- RESERVE SENIOR CHAMPION DOE

LOT

- K. Champion Challenge - proof of championship must be on registration papers. Champion of the day is automatically entered.
- GRAND CHAMPION
- RESERVE GRAND CHAMPION

LOT

- L. Best Udder - 1 entry per exhibitor per breed
- M. Dam and Daughter
- N. Produce of Dam: 2 females from same dam, dam to be named - owned by one exhibitor
- O. Sr. Get of Sire: 3 females, any age, at least 1 in milk, by same sire, sire to be named.
- P. Exhibitor Herd: 4 does, any age, owned by one exhibitor
- BEST SENIOR DOE OF SHOW
- BEST JUNIOR DOE OF SHOW

DIVISION R - OPEN CLASS SHEEP

Joana Harold - Co-Superintendent, (360)456-3897
 Ashley Harold - Co-Superintendent, (360)456-3897

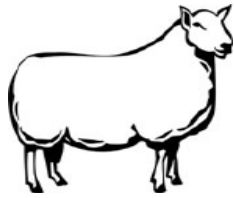
Entry Fee: \$2.50 per head
 Entry Deadline: July 1
 Judging: Wednesday, 2 pm
 Release Time: Thursday, 7 pm

RULES

1. PLEASE READ GENERAL RULES AND GENERAL LIVESTOCK RULES.
2. Pens will be reserved and exhibitors must accept pen space assigned by the superintendent.
3. Entries and fees will be returned when pen space is filled. Consideration will be given to entries received as to the time and date received.
4. All animals must be registered. Registration papers are needed for proof of registration and ownership. Failure of an exhibitor to furnish sufficient evidence will disqualify any animal held in doubt. Paper check-in time will be held prior to show.
5. All sheep must be wearing the ear tag or tattoo corresponding to the number on entry form and registration papers.
6. Animals must show appropriate lamb or yearling teeth. If there is any doubt of the animal's age, the Judge will decide age by examining the teeth of that animal.
7. Exhibitors will be limited to two entries in single lots and one entry in group lots. Animals in group classes must have been shown in individual classes.

8. All sheep should be clean and well fitted. Animals should be fit in accordance with individual sheep registry association rules.
9. All flocks exhibited in open class must be identified by a sign or other appropriate means throughout the duration of the fair. Sign should include Exhibitor's name, address and breed of animal.
10. Any change in entries must be made with the superintendent before day of showing. Substitutions may be made only within the same breed class.
11. Birth dates for following Breeds are as follows: Columbias, Corriedales, Dorsets, Hampshires, Rambouillets, Shropshires, and Suffolks:
 Fall Lamb: Sept. 1 to Dec. 31
 Spring Lamb: Jan. 1 to Aug. 31
 Cheviots, Leicesters, Lincolns, Natural Color, Romney, Southdowns, and other breeds:
 Fall Lamb: Sept. 1 to Jan. 31
 Spring Lamb: Feb. 1 to Aug. 31

- CLASS 1 - Border Cheviot**
- CLASS 2 - Border Leicester**
- CLASS 3 - Columbia**
- CLASS 4 - Corriedale**
- CLASS 5 - Dorset**
- CLASS 6 - Hampshire**
- CLASS 7 - Jacob**
- CLASS 8 - Lincoln - White**
- CLASS 9 - Montadale**
- CLASS 10 - North Country Cheviot**
- CLASS 11 - Oxford**
- CLASS 12 - Polypay**
- CLASS 13 - Romney - White**
- CLASS 14 - Scottish Blackface**
- CLASS 15 - Shetland**
- CLASS 16 - Shropshire**
- CLASS 17 - Southdown**
- CLASS 18 - Suffolk**
- CLASS 19 - Natural colored**
- CLASS 20 - Natural colored Lincoln**
- CLASS 21 - Natural colored Romney**
- CLASS 22 - Other down breed**
- CLASS 23 - Other wool breed**
- CLASS 24 - Angora goat**
- CLASS 25 - Cashmere goat**



PREMIUM POINTS

	1st	2nd	3rd	4th	5th
	105	90	75	65	50

- LOT** (For Classes 1-23)
- A Yearling Ram: one year and under two years
 - B Fall ram lamb: see date of birth under Rule 11
 - C Spring lamb ram: same under Rule 11
 - D Pair of ram lambs: under 1 year. Bred and owned by exhibitor.
- | | |
|----------------------|--------|
| CHAMPION RAM | RIBBON |
| RESERVE CHAMPION RAM | RIBBON |
- LOT** (For Classes 1-23)
- E Yearling ewe: 1 year and under 2
 - F Pair of yearling ewes: 1 year and under 2 years. Bred and owned by exhibitor.
 - G Fall ewe lamb: see Rule 11 for date of birth
 - H Spring ewe lamb: birth date Rule 11 guidelines
 - I Pair of ewe lambs: under 1 year. Bred and owned by exhibitor.
- | | |
|----------------------|--------|
| CHAMPION EWE | RIBBON |
| RESERVE CHAMPION EWE | RIBBON |
- LOT** (For Classes 1-23)
- J Young Flock: 1 ram lamb and 2 ewe lambs, "bred and owned by exhibitor".
 - K Flock: 1 ram (yearling or lamb) and 2 yearling ewes and 2 ewe lambs, "bred and owned by exhibitor".
 - L Get of Sire: 4 animals, lamb or yearling, both sexes represented, all by same sire.
 - M Best Pair: 2 animals bred and owned by exhibitor "both sexes must be represented".

- LOT** (For Classes 24-25)
- N Does under 1 year and of age
 - O Does 1-2 years of age
 - P Does over 2 years of age

SUPREME CHAMPION RAM Revolving Plate
 SUPREME CHAMPION EWE Revolving Plate

DIVISION S - OPEN CLASS FLEECE AND FIBER

Ashley Harold - Co-Superintendent, (360)456-3897
 Joana Harold - Co-Superintendent, (360)456-3897
 Kathie McWaid - Co-Superintendent, (360)438-3476

Entry Fee: \$1.00 per fleece
 Entry Deadline: Wednesday, 10 am

RULES

1. Registration will be made at the Thurston County Fair Office by the Tuesday before fair. This is to include all 4-H or FFA fleece to enter the Open Class Fleece.
2. Fleece must be one year (12 months) growth or less.
3. Fleece must be exhibited with sheared side out.
4. Open Class fleece or fiber should be brought to the fair on Tuesday, prior to the opening of fair, Noon to 9 pm.
5. Limit two entries per exhibitor per class.

PREMIUM POINTS

	1st	2nd	3rd	4th	5th
	45	35	25	15	5
Champion					RIBBON
Reserve Champion					RIBBON

- CLASS 1 - Border Cheviot**
- CLASS 2 - Border Leicester**
- CLASS 3 - Columbia**
- CLASS 4 - Corriedale**
- CLASS 5 - Dorset**
- CLASS 6 - Hampshire**
- CLASS 7 - Jacob**
- CLASS 8 - Lincoln**
- CLASS 9 - Montadale**
- CLASS 10 - North Country Cheviot**
- CLASS 11 - Oxford**
- CLASS 12 - Polypay**
- CLASS 13 - Romney**
- CLASS 14 - Shetland**
- CLASS 15 - Shropshire**
- CLASS 16 - Southdown**
- CLASS 17 - Suffolk**
- CLASS 18 - Natural Color**
- CLASS 19 - Other Wool Breeds**
- CLASS 20 - Other down Breeds**
- CLASS 21 - Commercial**

CLASS 22 - Goat

- LOT**
- A Cashmere
 - B Mohair
 - C Pygora
 - D Angora

CLASS 23 - RABBIT

- LOT**
- A English Angora
 - B French Angora
 - C Giant Angora (White Only)
 - D Satin Angora

CLASS 24 - Alpaca

CLASS 25 - Llama

- LOT**
- A Sheared
 - B Brushed

DIVISION T- LADS & LASSIES LEAD CONTEST

Ashley Harold - Co-Superintendent, (360)456-3897
Joana Harold - Co-Superintendent, (360)456-3897

The Thurston County Fair Guidelines for the Lead Class show are as outlined:

- Entrants will be divided into three classes as outlined below.
- Sheep must be conditioned, fitted and trained to show on a halter.
- Participants need not own the sheep they are showing.
- Contestants must wear a garment made of no less than 70% wool.
- Entries shall include a description of the garment to be worn, the background of the contestant and the breed of the sheep shown (max. of 200 words please). This commentary will be read aloud during the contestant's promenade in the ring.
- Entrants will be judged as follows:
 - Garment 40%
 - Handling and appearance of sheep 30%
 - Exhibitor's over-all image 30%
- Entries are due by Wednesday 10 am. Contest to be held on Wednesday. Check schedule of events for time.
- All exhibitors are encouraged to participate in the Lads and Lassies Lead Contest, including non-sheep exhibitors.
- No entry fee.

PREMIUM POINTS

	1st	2nd	3rd	4th	5th
	105	90	75	65	50

CLASS 1 - AGES 12 and under

CLASS 2 - AGES 13-17

CLASS 3 - AGES 18 AND OVER

DIVISION U - OPEN CLASS POULTRY

Teresa Smith - (360) 280-7011

RULES

- PLEASE READ GENERAL RULES AND GENERAL LIVESTOCK RULES.
- Notice of entries must be made by July 1st at the Fair Office.
- All poultry must be passed through a vet check between 4:00 pm - 8:00 pm Tuesday the day before the Fair opens and not removed before 7:00 pm Sunday, closing day of the Fair.
- No fowl will be accepted that show signs of disease, lice, or mites.
- Birds shown in a trio or pen cannot be shown as singles.
- Cash awards will be given in all classes, if two or more in class and lot, otherwise ribbons only.
- All poultry will be judged by the American System.
- All poultry entered must be purebred and entered according to the Standards of Perfection. No crossbreeds, please.
- All poultry should be banded with numbered bands for identification. This number should be recorded on the entry blank.
- Chickens entered in Open Class cannot be entered as a 4-H entry.

PREMIUM POINTS	BLUE	RED	WHITE
	30	20	10

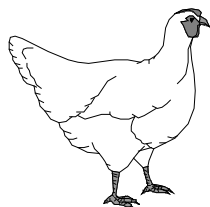
CHAMPION Ribbon only

RESERVE CHAMPION Ribbon only

CLASS 1 - CHICKENS (LARGE) STANDARD

LOT

- Cock
- Hen
- Old Trio
- Cockerel
- Pullet
- Young Trio



CLASS 2 - CHICKENS - BANTAMS

LOT

- Cock
- Hen
- Old Trio
- Cockerel
- Pullet
- Young Trio

CLASS 3 - DUCKS

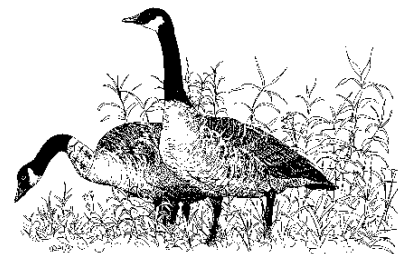
LOT

- Old Drake
- Old Duck
- Young Drake
- Young Duck

CLASS 4 - GEESE

LOT

- Old Gander
- Old Goose
- Young Gander
- Young Goose



CLASS 5 - TURKEYS

LOT

- Old Tom
- Old Hen
- Young Tom
- Young Hen

CLASS 6 - OTHER

LOT

- Pigeon
- Pheasant
- Pea Fowl
- Dove
- Other

CLASS 7 - EGGS

LOT

- White
- Brown
- Araucana
- Other

DEPARTMENT III - DIVISION V - YOUTH MARKET ANIMAL SALE

Dave Kalar, Sale Manager

Members of Sale Committee, Sifting Committee, Weigh Master & Sale Coordinators.

Sponsors: Thurston County Youth Market Animal Sale Committee, Thurston County Fair, Thurston County Extension, Thurston County Agricultural Educators & Thurston County 4-H Council.

SALE TIME: 5 PM Saturday night of the fair.

PURPOSE: To provide an incentive to exhibit and sell quality market stock (beef, sheep, swine, meat goats & market rabbits which have reached marketable weight and grade. Both the seller (4-H & FFA members) and the bidders and/or buyers are reminded that the prices paid to the seller on their animal may not, in fact, reflect a true market price at the time of the sale. It is the desire of the sponsors that the buyer of the animals featured in this sale will bid sufficiently to cover the individual Exhibitor's additional expenses incurred. Any animal sold in the auction are suitable for processing at the time of the sale.

RULES AND REGULATIONS ELIGIBILITY:

The TCYMAS committee has made every effort to make rules and regulations definite and clear. If it becomes necessary to settle any controversies that may arise out of, connect with or incidental to the TCYMAS Committee and the Thurston County Fair Board, the committee reserves the final and absolute right to interpret them.

- Only market stock in official 4-H and FFA projects are eligible. Each exhibitor must be enrolled in 4-H or be a member of an FFA Chapter and be actively caring for the animal(s) exhibited as a 4-H project or FFA SAE project. 4-H and FFA members must be enrolled as a member of Thurston County 4-H or a Thurston County FFA Chapter. Each 4-H and FFA member must follow the rules and regulations of their respective organization, the Thurston County Fair and the Thurston County Youth Market Animal Sale

Committee. If any disciplinary action is necessary towards the exhibitor, the committee reserves the right to review all actions and may disqualify the exhibitor from the sale.

2. A certificate of MEMORANDUM OF UNDERSTANDING/INTENT TO SELL must be completed to be eligible for the sale. Forms must be postmarked by **April 15 for steers and June 1 for lambs, swine, meat goats and market rabbits**. Intent must be mailed to Market Animal Sale Committee, P O Box 695, East Olympia, WA 98540. Copies of "Intent to Sell" certificates are available from the Thurston County Extension office, the Thurston County Fair office, and animal project leaders, or website: www.co.thurston.wa.us/fair. Copies may be made. NO EXCEPTIONS.
3. The sale Sifting Committee shall inspect all animals entered in the division between 6:00 and 9:00 pm on Tuesday prior to fair during weigh-in. If the animal does not meet weight requirements, the exhibit will be disqualified from the auction. However, the exhibitor may change his/her entry to the appropriate division, class and lot not associated with the Market Animal Sale class and lot. The exhibitor must be present for inspection and weigh-in. A shrink of 3% for steers and 2% for hogs, lambs, and meat goats will be taken from scale weight (hot weight) to obtain the animal's sale weight.
4. No steers having horns longer than 2 inches will be permitted. Meat goats must be dehorned.
5. Market hogs may be gilts or barrows; market lambs may be ewes or wethers; meat goats may be wethers or does.
6. Market lambs must have no more than 3/4" inch of fleece.
7. No animal previously sold at any 4-H or FFA Youth Sale shall be allowed to be resold at the Thurston County Fair.

If you choose to participate in the Thurston County Youth Market Animal Sale, you may not cross enter into neighboring county fair animal sales for the current year.

The Northwest Junior Livestock Show, Puget Sound Livestock Show, and Washington Junior Lamb Carcass Show are not county fairs.

8. 4-H and FFA exhibitors will compete separately in the market classes in their species. Market animals of FFA and 4-H exhibitors will sell together, alternating the first slot, each year. Sale order by species will also rotate each year. The committee and market judge will make the official order of sale from the combined 4-H and FFA animals. The judge will designate one (1) Champion and one (1) Reserve Champion for each species for FFA and 4-H respectively. These animals will sell first and second respectively in their section of the sale. The judge & sale committee shall determine the sale order of all other animals in each species. All blue ribbon animals will sell before red ribbons animals. All decisions and placing by the judge and the committee are final.
9. All 4-H and FFA Market Sale animals must meet the ownership date requirement. Date of ownership in as follows:
Steers- 15 April of the current fair year; Hogs – 1 June of the current fair year; Lambs – 1 June of the current fair year; Meat goats – 1 June of the current fair year; Market Rabbits – 1 July of the current fair year.
10. Scales used to weigh the animals will be checked and accepted by the State of Washington.
11. This is a terminal sale for all animals sold at TCYMAS auction.
12. All sheep and goats entered in the 4-H/FFA Thurston County Youth Market Animal Sale at the Thurston County Fair shall be identified as per the USDA-APHIS Scrapie Mandatory Identification Program for sheep and goats.

Entry Regulations:

1. Each exhibitor may consign up to two (2) separate units. A unit is a single market steer, single market lamb, single market hog, single meat goat, single market rabbit fryer, or a single market rabbit fryer pen of three (3) rabbits.
2. Exhibitors may not withdraw their exhibits from the show or auction after weigh in on the day before the Fair.
3. Market animals must not be in any type of partnership. If this rule is violated, future entries into future sales may be limited.
4. Exhibitors and/or others may not buy animals for specific return of animals to the seller or to be shown at other shows and/or sales by an exhibitor.

5. NO ANIMAL WILL BE ALLOWED TO BE SOLD UNLESS AN INTENT TO SELL/MEMORANDUM OF UNDERSTANDING OF SALE RULES IS SIGNED BY EXHIBITOR, PARENT/GUARDIAN, AND LEADER/ADVISOR AND RECEIVED BY THE SECRETARY OF TCYMASC BY THE DUE DATES INDICATED: APRIL 15TH STEERS; JUNE 1ST HOGS, LAMBS, MEAT GOATS; and MARKET RABBITS. NO EXCEPTIONS!
6. No animal will be weighed without a completed **Market Health Record**.
7. Sellers of market steers at the final weigh-in must complete and hand in a hauling slip and bill of sale if animal is branded.

Tags:

Animals should be tagged, banded, or tattooed prior to the Fair. Tags will be available at the May Livestock Sale Welcoming and Information meeting. Animals should be tagged before weigh-in or during weigh-in. Rabbit tattoos will be entered on intent to sale form before weigh.

Weigh-in:

1. Final weigh-in will be Tuesday night 6:00 – 9:00 pm prior to the start of the fair. Order of species will rotate from year to year determined by the sale committee.
2. Sellers must be present to bring their animals to the scales. NO PROXIES ALLOWED WITHOUT PRIOR SALE COMMITTEE APPROVAL.
3. A shrink of 3% for steers, 2% for hogs, lambs, and meat goats will be taken from the scale weight (hot weight) to obtain the animal's **sale weight**.

Sale Regulations:

1. The official judge while judging for type may exclude the exhibit from the sale if the animal fails to meet the minimum grade as established. Animals sold at the auction will include only blue and red ribbon animals. White ribbon animals will not be allowed in the auction.
2. All animals found eligible for the sale will be weighed for sale weight on Tuesday prior to fair.
3. Sellers must be present to bring their animal(s) into the auction ring or it will not be sold. NO PROXIES ALLOWED WITHOUT PRIOR SALE COMMITTEE APPROVAL.
4. All animals will be sold by the pound.
5. All sales are final.
6. Sale order will be determined by the Sale Committee and the judge.
7. USDA requirements for withdrawal of feed additives and medications shall be followed. If the animal is condemned in the slaughter process for violation of these USDA requirements, it is the seller's responsibility to absorb the loss.

Payment from Sale:

1. A fee of 3% (no less than \$2.00) of gross sale will be deducted from the sale of each animal. A fee for each new species will be 5% (no less than \$2.00) the first year, 4% (no less than \$2.00) the second year, and 3% (no less than \$2.00) the third year.
2. Proceeds of the sale will be distributed to exhibitors or their assignors after payment has been received from the buyer. No payments will be made to the sellers/exhibitor until the treasurer has collected all proceeds of the sale.

Seller's Responsibilities:

1. Each exhibitor/seller assumes the responsibility for securing at least three (3) potential buyers/bidders for each animal to be sold.
2. Exhibitors/sellers of market steers must provide buyers with rope halters which may or may not be returned to the exhibitor. This halter must be left on the steer in the barn.
3. ALL EXHIBITORS/SELLERS ARE REQUIRED TO CARE FOR THEIR MARKET ANIMAL UNTIL THE ANIMAL LEAVES THE FAIRGROUNDS OR UNTIL LIVESTOCK RELEASE TIME ON SUNDAY, THE LAST DAY OF THE FAIR.

Purchasing Animals:

1. Anyone wanting to purchase any of the market animals may do so by oral bid or proxy.
2. This sale is a terminal sale. All processed animals shall go to a designated state-approved slaughter facility as stated in the sale catalog. When a buyer requests the animal be processed for his own use, he takes possession of the carcass at the packing house. The cost of custom slaughter and wrapping is the buyer's responsibility.
3. Buyers not wishing to keep the animal they purchase should indicate that at the time of sale. The animal will automatically be resold to a turned buyer at the published turned price. In this case, the buyer pays the difference between his bid and the turned price. The turned buyer pays the base price and takes delivery of the animal.

Buyer's Responsibilities:

Buyers must pay with cash, check, or credit card following the sale or make prior arrangement with the treasurer.

Buyer Recognition:

A card listing the buyer's name(s) will be placed at each animal's pen or stall so that the public may see the animal and recognition given to the buyer.

Weight, Grading and Age Requirements for Market Animals:

MARKET STEERS: 1000 lbs. minimum. Must grade either select or choice to qualify for the sale. Desirable age of steers should be less than 24 months.

MARKET LAMBS: 90 lbs minimum to 160 lbs. maximum. Must grade either select or choice to qualify for the sale and not over $\frac{3}{4}$ " of fleece.

MARKET HOGS: 200 lbs. minimum to 285 lbs. maximum. Must grade either USDA #1 or USDA #2 to qualify for the sale.

MEAT GOATS: 60 lbs minimum and must grade **Blue Ribbon** to qualify for the sale, must be born after January 1 of current fair year and must be a Boer goat or a meat goat cross. Meat goats will be graded on weight, muscle tone, and overall condition.

MARKET RABBITS: A single fryer must be under 70 days, weigh between 3 lbs. minimum to 5 lbs. maximum. Fryer pen must consist of three (3) fryer rabbits under 70 days and each weighing between 3 lbs. minimum and to 5 lbs. maximum. All blue and red ribbon single fryers and fryer pens are eligible for sale.

If a weight of an animal is contested, the animal must stay within the scale area and be re-weighed immediately.

DIVISION V- EDUCATIONAL DISPLAYS

New Division - Only ribbons awarded this year

Kisha Kimmons - Superintendent 360-459-0524

POSTERS, DISPLAYS AND MOBILES**RULES**

1. Exhibitor may enter up to three displays for the Open Class Divisions at the fair: Multiple Entries must be in different lots or sub-lots of the same division, all entries do not have to be in the same division.
2. Exhibitor is responsible for correct lot or subplot selection
3. Exhibitor does not need to have an item entered in the division that they have a display for.
4. Educational displays can contain photographs, samples, models, charts, etc. Do not use copyrighted illustrations or photographs. Displays for 4-H and FFA will not be accepted in this category
5. Displays for 4-H and FFA will not be accepted in this category
6. Commercial posters, displays, mobiles will not be considered for judging in this division

7. Large educational displays must be pre-entered with the superintendent prior to the entry date with space requirements
8. The current date, exhibitor's name and phone number must be on the back of each display
9. Educational Displays will be exhibited in the appropriate division. The Education Display Superintendent is responsible for coordinating with the appropriate division for display space. Note -when the display is entered for judging, the superintendent should be able to tell the exhibitor where the display will be during fair time. If the display is unusually large or complicated to set up, the superintendent has the right to ask exhibitor to set up prior to fair time.
10. Exhibitors can pick up their entry after 8 pm on the last day of the fair from the appropriate division or according to the pick-up schedule in the exhibitor's guide.
11. Displays with incorrect information will not be exhibited.

Judging Criteria

1. A scorecard will be used for all entries and attached to displays after judging.
2. Displays will be judged on eye appeal, neatness, information provided and complexity.
3. Displays should be self-explanatory.
4. Displays should have a topic for the information being provided.
5. All displays must be self-explanatory, give educational information, and be a complete story.
6. Posters must be able to be read from 10 feet away, be clear and sharp, have correct spelling, punctuation and information.
7. Exhibitors will have to identify which Open Class Division, Lot, or Sublot that educational display is being exhibited for when entering their displays.

Lots -

- A Open Class Horticulture
- B Open Class Floral Design
- C Open Class Special Exhibits
- D Open Class Art
- E Open Class Photography
- F Open Class Needle Arts
- G Open Class Quilts
- H Open Class Sewing
- I Open Class Fiber Arts
- J Open Class Baking
- K Open Class Food Preservation
- L Open Class Beverages
- M Open Class Hobbies and Crafts
- N Open Class Baled Hay and Crops
- O Open Class Dairy Cattle
- P Open Class Beef Cattle
- Q Open Class Dairy Goats
- R Open Class Sheep
- S Open Class Fleece and Fiber
- T Lads & Lassies Lead Contest
- U Open Class Poultry

Fair Manager's
**Chocolate
Cake Contest**

Thursday • August 4

Bring your best chocolate cake, size, shape, frosted, unfrosted, to be judged by Fair Manager, Rick Storvick and his team of experts.



Each contestant will receive FREE admission to the fair (parking fees not waived). Ribbons provided for winners in both Youth and Adult categories.

Bring cakes to the Expo Center on Thursday, August 4, from noon to 2 p.m. Please include recipe with name, address and phone number. Judging will start at 2 p.m.

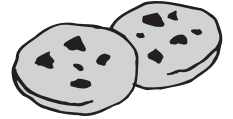
Cake slices will be distributed to fairgoers after judging.

Cakes cannot need refrigeration and please use disposable plates.

**The Cookie
Contest**

Friday • August 5

Yes, you can enter other cookies besides chocolate chip. Bring your favorite cookie recipe on Friday and earn the honor of being named Best Cookie Baker of Thurston County.



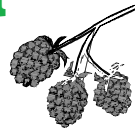
Each contestant will receive FREE admission to the fair (parking fees not waived). Youth and adult winners will receive ribbons and prizes. Bring cookies to the Expo Center from noon to 2 pm. Please include name, address, phone number, and a copy of the recipe. Pre-Judging will start at 2 pm. with final judging at 4 pm.

Cookies cannot need refrigeration and please use paper plates, bring between 6-10 cookies.

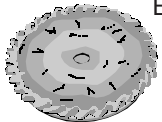
Thurston County Fair's
"Berry Pie Contest"

Saturday • August 6

Sponsored by Spooner Berry Farms



The name says it all. Bring your best berry pie to the Fair. Adult and youth prizes will be awarded with the winning pie to be auctioned and pie slices sold after the judging. Proceeds benefit the Thurston County Food Bank.



Each contestant will receive FREE admission to the fair (parking fees not waived). Youth and adult winners will receive ribbons and prizes.

Bring pies to the Expo Center on Saturday, August 6th, from noon to 2 p.m. Please include recipe with name, address and phone number. Pre-judging will start at 2 p.m. with final judging at 4 pm.

Pies cannot need refrigeration and please use disposable plates.

Sunday's Special

**Cup Cake
Contest**

Sunday • August 7

Make a dozen cupcakes today and bring four to be judged by our panel of experts and be named the best cupcake at this year's Fair.

Each contestant will receive FREE admission to the fair (parking fees not waived). Youth and adult winners will receive ribbons and prizes.

Bring cupcakes to the Expo Center on Sunday, August 7, from noon to 2 p.m. Please include recipe with name, address and phone number. Pre-judging will start at 2 p.m. and final judging will begin at 4 pm.

Cupcakes should not need refrigeration. Please provide a recipe (on 3 x 5 card) with name, phone number, and address with each entry.

Cupcakes will be sold after the contest and proceeds given to the Thurston County Food Bank.

Please bring a minimum of four cupcakes for judging.