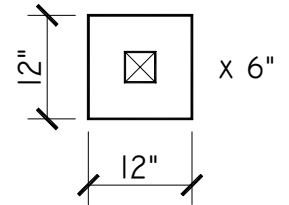


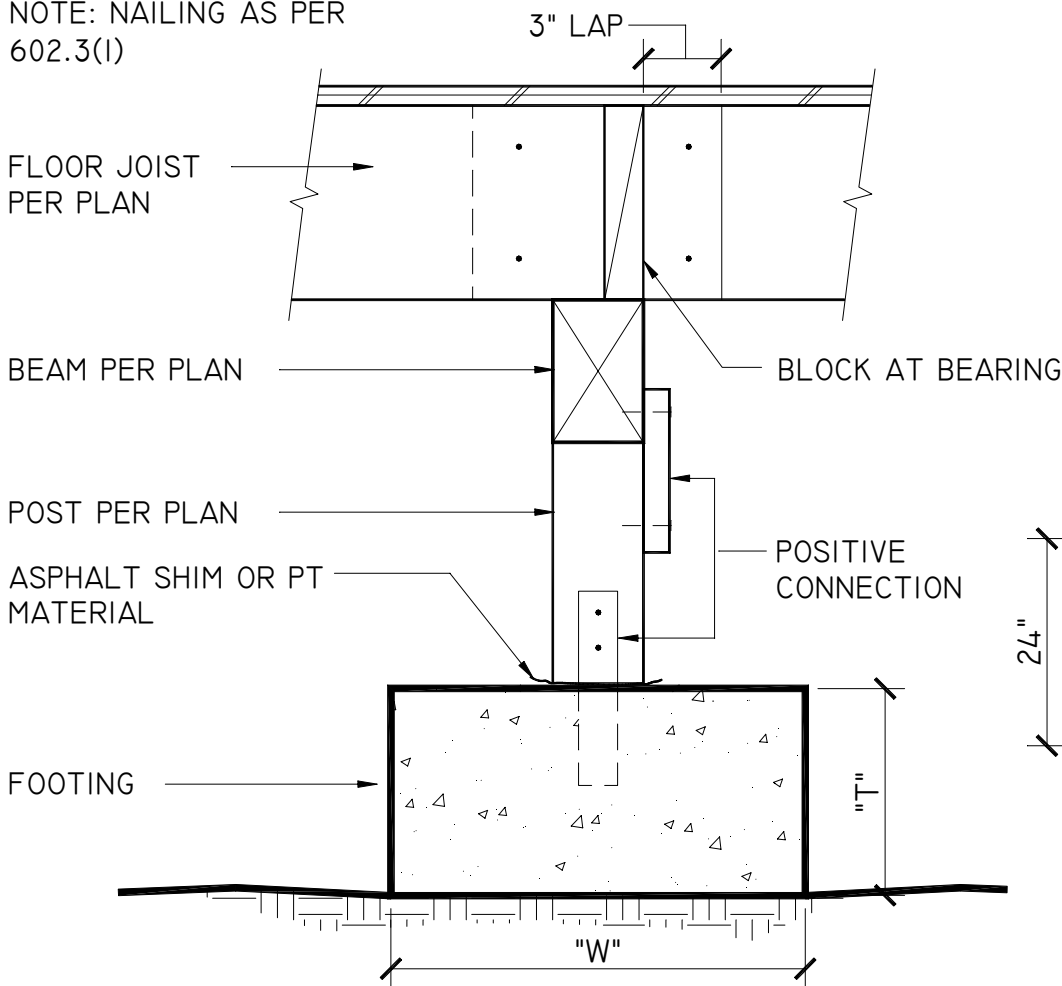
TC Figure 6 Isolated Footings

MAX LOAD	1,500#	2,500#	6,000#
T (THICKNESS)	6"	8"	12"
W (WIDTH)	12"	16"	24"

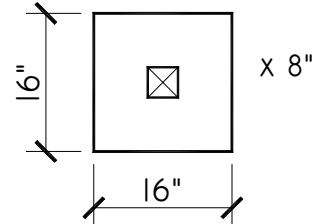
MAX LOAD
1,500#



NOTE: NAILING AS PER
602.3(I)



MAX LOAD
2,500#



MAX LOAD
6,000#

