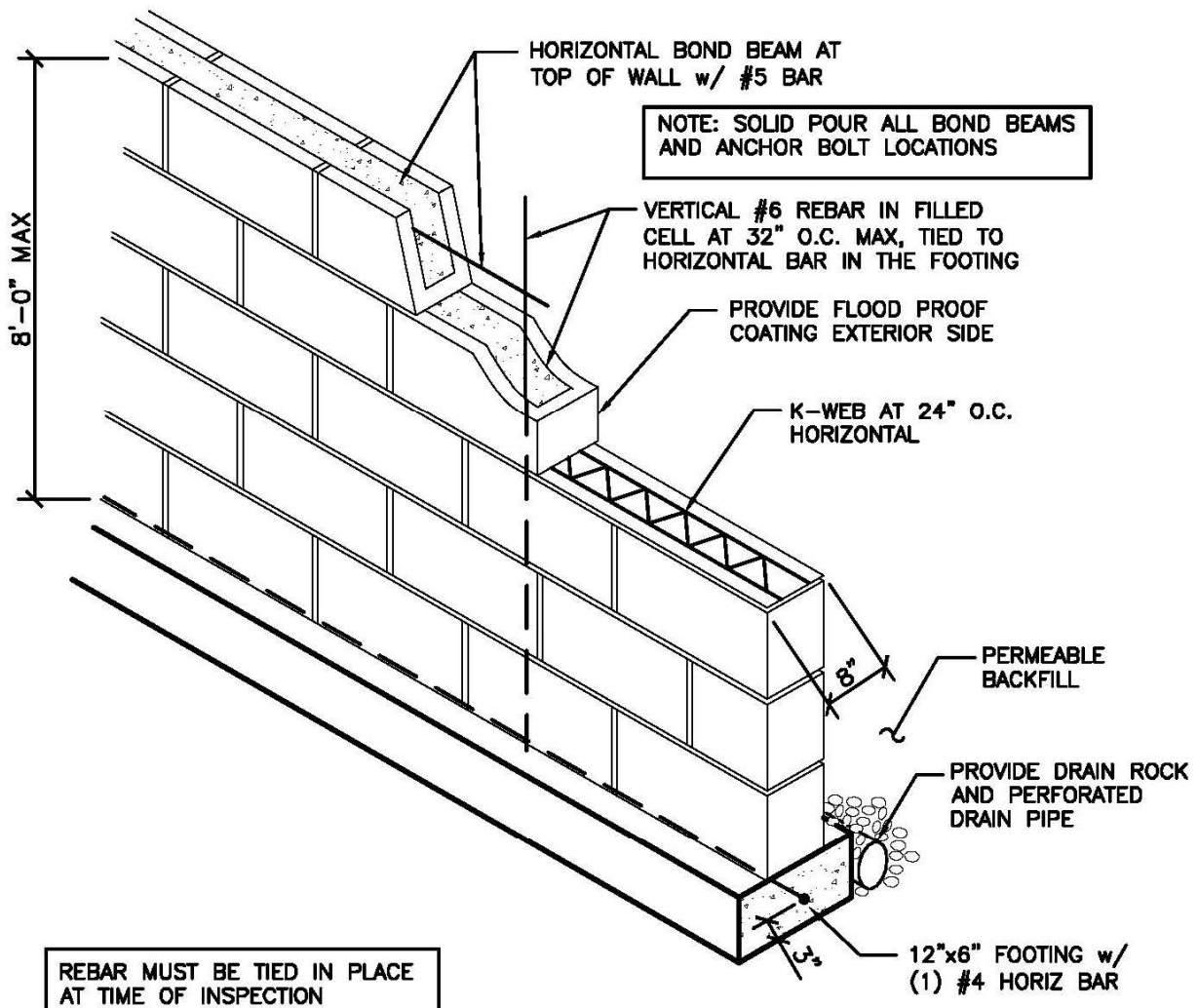


## TC Figure 7 Concrete Masonry Unit Wall



### NOTES:

FOR WALL LESS THAN 4'-0" HIGH VERTICAL #4 AT 4'-0" O.C. HORIZONTAL K-WEB AT 16" O.C. NO BOND BEAM REQUIRED FOR WALLS LESS THAN 4'-0" HIGH

UNBALANCED BACKFILL HEIGHT SHALL NOT EXCEED 4'-0". DESIGN PER TABLE 404.1.1.(2) 8"