

Are any of these problem plants on your farm or ranch?



Blackberry



Knapweed



Knotweed



Reed Canary Grass

Many of these non-native plants that have been invading farms and ranches in Thurston County. These plants have no known pests to keep their populations in check and therefore they tend to crowd out native plants destroying valuable wildlife habitat in our community.

If you have any of these plants, there are tools available which provide financial and technical assistance in controlling these problem plants. The tools are the USDA Natural Resources Conservation Service Environmental Quality Incentives Program (EQIP) and the Wildlife Habitat Incentives Program (WHIP).

To qualify for financial assistance under these programs the land must be owned and operated by a private individual, group, or tribe. Must be actively producing farmland, rangeland, or forestland and occur within ¼ mile of an important habitat such as a glacial outwash prairie or along a stream, river, or wetland.

To find out more information, contact:

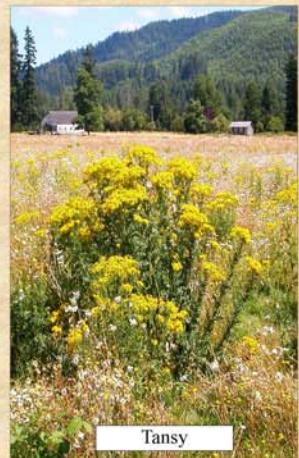
USDA Natural Resources Conservation Service
1835 Black Lake Blvd. SW
Olympia, WA. 98512



Scotch Broom



Loosestrife



Tansy