

**THURSTON COUNTY**  
**WASHINGTON**  
SINCE 1852

# Treatment Sales Tax Community Review Committee

January 28, 2009

# Today

---

- ▶ Describe current status of Treatment Sales Tax:
  - ▶ State law
  - ▶ County ordinance
  - ▶ Implementation plan
- ▶ Who is involved?
  - ▶ County staff
  - ▶ Community members
- ▶ What we should expect and when:
  - ▶ Needs assessment
  - ▶ Plan
  - ▶ Review
  - ▶ Approval
- ▶ Community Review Committee Charter



# RCW 82.14.460 Language & Intent

---

- ▶ Reduce negative impacts of mental health and substance abuse on children and families
- ▶ Avoid building more jails and prisons and prevent crime victims
- ▶ Reduce public assistance expenditures and unemployment
- ▶ Reduce homelessness
- ▶ Reduce physical-health care and emergency room costs
- ▶ Improve recovery and quality of life for those with chemical dependency and mental health disorders



# Thurston County Ordinance #14138

## (slide #1)

---

- ▶ Improve the quality of life for Thurston County residents with mental illness and/or chemical dependency by reducing their involvement with the criminal justice system.
  - ▶ Reduce the number of people who have a high recidivism rate and/or have lengthy jail stays as a result of their mental illness chemical dependency and/or homelessness.
  - ▶ Increase the ability to divert mentally ill and/or chemically dependent adults and youth using evidence based practices from jail services either through pre-booking or post-booking diversion, to appropriate levels of care and housing.
  - ▶ Increase levels of interagency collaboration cross system coordination and planning between corrections courts mental health chemical dependency and housing services.
- ▶ Continued on next slide
- 



# Thurston County Ordinance #14138

## (slide #2)

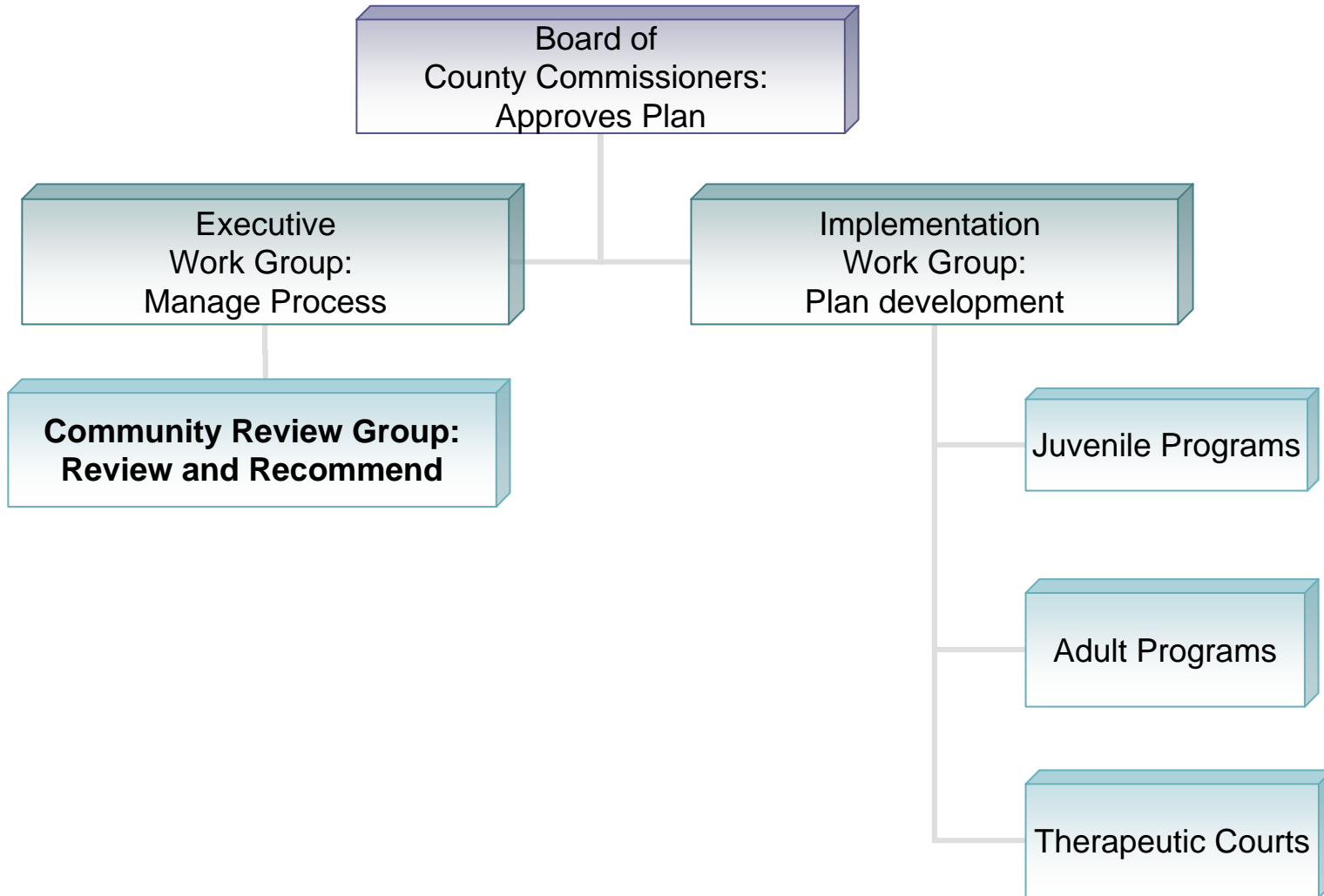
---

- ▶ Create a system of prevention services and strategies for youth and adults based on evidence base practices.
- ▶ Increase public safety by using risk and needs assessments for all adult and youth offenders to determine appropriate service designation for mental health chemical dependency and/or jail services.
- ▶ Increase therapeutic services and resources for youth and adults who have co-occurring disorders of mental illness and chemical dependency.
- ▶ Increase community law enforcement corrections and courts education and training for prevention diversion and intervention.



# Planning Structure

---



# Work Plan

---

- ▶ Project manager: Gail Gosney
- ▶ Administrative support: Cindy Bricker
- ▶ Executive Work Group:
  - ▶ Don Krupp
  - ▶ Gail Gosney
  - ▶ Mark Freedman
  - ▶ Marti Maxwell
  - ▶ Sherri McDonald
- ▶ Implementation Work Group: County staff
- ▶ Community Review Committee
- ▶ Board of County Commissioners



# Implementation Work Group Members

---

- ▶ Superior Court
- ▶ District Court
- ▶ Adult Corrections
- ▶ Prosecuting Attorney Juvenile Justice
- ▶ Public Health & Social Services
- ▶ Public Defender
- ▶ Sheriff's Office
- ▶ Public Information



# Community Review membership

---

- ▶ City government
- ▶ Law enforcement
- ▶ Social service agencies
- ▶ Tribes
- ▶ Businesses
- ▶ Schools
- ▶ State agencies
- ▶ Citizens



# Use of Technology

---

## ▶ Web Sites

- ▶ County staff: [www.co.thurston.wa.us/treatment-tax-review](http://www.co.thurston.wa.us/treatment-tax-review)
- ▶ External review: [www.co.thurston.wa.us/treatment-tax](http://www.co.thurston.wa.us/treatment-tax)

## ▶ Communication: email replies from external web site

- ▶ Executive Team will monitor and respond

## ▶ Glossary: developed throughout process

- ▶ Seek common understanding among disciplines



# Timeline (slide #1)

---

## January 28: First Community Review Committee kick-off

- ▶ role
- ▶ responsibilities
- ▶ framework
- ▶ evidence
- ▶ Evaluation
- ▶ Timeline
- ▶ **March 23: Second Community Review Committee meeting**
  - ▶ needs and gaps
  - ▶ programs and research evidence
    - ▶ **Continued on next slide**



# Timeline

(slide #2)

---

- ▶ **May 4: Final Community Review Committee meeting**
  - ▶ baseline data
  - ▶ performance measures
  - ▶ priorities
  - ▶ budgets
- ▶ **May 18: Board of County Commissioners briefing**
- ▶ **June 1: Public Hearing**
- ▶ **June 15: Plan adoption (2009-2010) by Board of County Commissioners**



# Timeline

(slide #3)

---

- ▶ June 22: Budget amendment adoption
- ▶ July 1: Program implementation begins
  - ▶ Priorities established in the Plan
  - ▶ Subject to available funding
- ▶ September: Resume planning 2011-2016
  
- ▶ July 2010: First year program evaluation
- ▶ December 31, 2016: Treatment Sales Tax Ordinance sunsets



# Charter

---

- ▶ **Scope** : examine and provide comment on the Implementation Plan for the Treatment Sales Tax.
  - ▶ The Community Review Committee is advisory to the Board of County Commissioners.
- ▶ **Role**: provide County staff with a wide array of expertise and community input to ensure that the Treatment Sales Tax Implementation Plan meets the needs of citizens throughout Thurston County.



# Your Responsibility

---

- ▶ Participate and deliberate as an active member of the Community Review Committee.
- ▶ Present the standpoint of you or your agency in discussions, balancing those views with a community-wide perspective.
- ▶ Present views and plan elements to the Board of County Commissioners and the general community.
- ▶ Ask questions
- ▶ Challenge assumptions
- ▶ Make recommendations



# Planning Framework

---

- ▶ County authority
- ▶ Staff expertise
- ▶ Evidence based
- ▶ Evaluation driven
- ▶ Community review
- ▶ Board of County Commissioners authority



# A program is successful if it can...

---

- ▶ ‘Verify’ that, as a result of its activities, specific individuals or groups are better off than before.
- ▶ ‘Document’ that the money funding the program was spent to achieve the goals that were stated (accountability).
- ▶ Provide ‘objective proof’ to people outside the program that it was a worthwhile use of resources.
- ▶ Identify strengths and weaknesses to allow for ‘quality improvement’.
- ▶ **Programs need to be designed and implemented using the best information available.**



# What we mean:

---

- ▶ **Evidenced-Based:** Strategies, activities, or approaches which have been shown through scientific research and evaluation to be effective at preventing and/or delaying an untoward outcome.
- ▶ **Promising Practices:** Programs and strategies that have some scientific research or data showing positive outcomes in delaying an untoward outcome, but do not have enough evidence to support generalizable conclusions.

For this effort, evidence refers to:

- ▶ The body of factors or information (scientific basis) that shows a program, strategy, activity or approach has a reasonable chance of being effective at preventing and/or delaying an untoward outcome.
- 



# Evaluation

---

- ▶ Systematic efforts to collect and use program information for multiple purposes.
- ▶ Build a picture of what happened.
- ▶ Document what was achieved and whether expectations were met.
- ▶ Identify areas where modifications could improve outcomes.
- ▶ Show someone outside the program whether it has a future – meets goals, should be re-funded.



# Measuring program outcomes:

---

- ▶ Most program outcomes are ‘short-term’ because you need to be able to measure them to see if change occurred over the course of the program.
- ▶ Evidence is used to create the link between short-term and long-term outcomes.
- ▶ The evidence provides correlation; a program does not need to do this research, but needs to “replicate with fidelity” (e.g. adhere to the model).



# What is an Evaluation Plan?

---

A written document that:

- ▶ Identifies questions to be answered through evaluation.
- ▶ Clearly states the anticipated outcome(s).
- ▶ Describes the methods and tools to be used to measure change.
- ▶ Lists the ways in which evaluation findings will be shared.
- ▶ Should be planned as part of program inception.
- ▶ Should have resources needed to carry it out.



# Resources available

---

- ▶ County staff
- ▶ Notebooks
- ▶ County web site



# Next meeting

---

- ▶ **March 23: Second Community Review Committee meeting**
  - ▶ needs and gaps
  - ▶ programs and research evidence



---

Thank you

Questions?

