

General Election, Sample Ballot
Thurston County, Washington
November 2, 2010

This sample ballot contains all candidates and measures certified to appear on the November 2, 2010 General Election ballot. Be sure to follow all instructions on your regular ballot. Ballots will begin arriving on October 14, 2010. If you require a replacement ballot, please contact our office at (360) 786-5408.

i Instructions

Marking Your Ballot

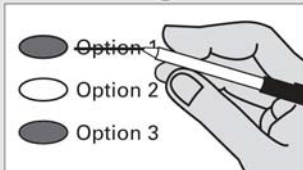


Completely fill in the oval to the left of your choice.

Use a dark blue or black ink pen. Do not use a pencil or gel pen.

Vote for one. If you vote for more than one, no votes for that candidate race or response will be counted.

Correcting A Mistake



Do not erase any selection made in error. If you make a mistake, draw a line through the entire candidate's name or response.

If you wish to vote for another candidate or response, fill in the oval to the left of your corrected candidate or response.

Optional Write-In

To add a candidate, fill in the oval provided to the left of "write-in" and print the name on the line.

Additional Information

Read all instructions in your ballot packet.

Remember to sign and date the voter's affidavit on the return envelope.

For a replacement ballot, please contact the Thurston County Auditor's Office at (360) 786-5408.

Deposit your ballot in a ballot drop box no later than 8:00 p.m. Election Day or mail using first class postage. It must be postmarked on or before Election Day.

State Measures**Proposed by Initiative Petition
Initiative Measure No. 1053**

Initiative Measure No. 1053 concerns tax and fee increases imposed by state government. This measure would restate existing statutory requirements that legislative actions raising taxes must be approved by two-thirds legislative majorities or receive voter approval, and that new or increased fees require majority legislative approval.

Should this measure be enacted into law?

- Yes
 No

**Proposed by Initiative Petition
Initiative Measure No. 1082**

Initiative Measure No. 1082 concerns industrial insurance. This measure would authorize employers to purchase private industrial insurance beginning July 1, 2012; direct the legislature to enact conforming legislation by March 1, 2012; and eliminate the worker-paid share of medical-benefit premiums.

Should this measure be enacted into law?

- Yes
 No

**Proposed by Initiative Petition
Initiative Measure No. 1098**

Initiative Measure No. 1098 concerns establishing a state income tax and reducing other taxes. This measure would tax “adjusted gross income” above \$200,000 (individuals) and \$400,000 (joint-filers), reduce state property tax levies, reduce certain business and occupation taxes, and direct any increased revenues to education and health.

Should this measure be enacted into law?

- Yes
 No

**Proposed by Initiative Petition
Initiative Measure No. 1100**

Initiative Measure No. 1100 concerns liquor (beer, wine and spirits). This measure would close state liquor stores; authorize sale, distribution, and importation of spirits by private parties; and repeal certain requirements that govern the business operations of beer and wine distributors and producers.

Should this measure be enacted into law?

- Yes
 No

State Measures (continued)**Proposed by Initiative Petition
Initiative Measure No. 1105**

Initiative Measure No. 1105 concerns liquor (beer, wine and spirits). This measure would close all state liquor stores and license private parties to sell or distribute spirits. It would revise laws concerning regulation, taxation and government revenues from distribution and sale of spirits.

Should this measure be enacted into law?

- Yes
 No

**Proposed by Initiative Petition
Initiative Measure No. 1107**

Initiative Measure No. 1107 concerns reversing certain 2010 amendments to state tax laws. This measure would end sales tax on candy; end temporary sales tax on some bottled water; end temporary excise taxes on carbonated beverages; and reduce tax rates for certain food processors.

Should this measure be enacted into law?

- Yes
 No

**Proposed to the People by the Legislature
Referendum Bill No. 52**

The legislature has passed Engrossed House Bill No. 2561, concerning authorizing and funding bonds for energy efficiency projects in schools. This bill would authorize bonds to finance construction and repair projects increasing energy efficiency in public schools and higher education buildings, and continue the sales tax on bottled water otherwise expiring in 2013.

Should this bill be:

- Approved
 Rejected

**Proposed to the People by the Legislature
Amendment to the State Constitution
Senate Joint Resolution No. 8225**

The legislature has proposed a constitutional amendment concerning the limitation on state debt. This amendment would require the state to reduce the interest accounted for in calculating the constitutional debt limit, by the amount of federal payments scheduled to be received to offset that interest.

Should this constitutional amendment be:

- Approved
 Rejected

State Measures (continued)

**Proposed to the People by the Legislature
Amendment to the State Constitution
Engrossed Substitute House Joint Resolution No. 4220**

The legislature has proposed a constitutional amendment on denying bail for persons charged with certain criminal offenses. This amendment would authorize courts to deny bail for offenses punishable by the possibility of life in prison, on clear and convincing evidence of a propensity for violence that would likely endanger persons.

Should this constitutional amendment be:

- Approved
- Rejected

READ: Each candidate for partisan office may state a political party that he or she prefers. A candidate’s preference does not imply that the candidate is nominated or endorsed by the party, or that the party approves of or associates with that candidate.

Federal Partisan Offices

U. S. Senator

- Patty Murray
- Dino Rossi
- _____
Write in

Six Year Term

- (Prefers Democratic Party)
- (Prefers Republican Party)

Vote for One

U. S. Representative, District No. 3

- Denny Heck
- Jaime Herrera
- _____
Write in

Two Year Term

- (Prefers Democratic Party)
- (Prefers Republican Party)

Vote for One

U. S. Representative, District No. 9

- Adam Smith
- Richard (Dick) Muri
- _____
Write in

Two Year Term

- (Prefers Democratic Party)
- (Prefers Republican Party)

Vote for One

State Legislature Partisan Offices

Representative, District No. 2

Position No. 1

- Jim McCune
- Marilyn Rasmussen
- _____
Write in

Two Year Term **Vote for One**
 (Prefers Republican Party)
 (Prefers Democratic Party)

Representative, District No. 2

Position No. 2

- J. T. Wilcox
- Tom Campbell
- _____
Write in

Two Year Term **Vote for One**
 (Prefers Republican Party)
 (Prefers Republican Party)

Representative, District No. 20

Position No. 1

- Richard DeBolt
- Corinne Tobeck
- _____
Write in

Two Year Term **Vote for One**
 (Prefers Republican Party)
 (Prefers Democratic Party)

Representative, District No. 20

Position No. 2

- Gary Alexander
- _____
Write in

Two Year Term **Vote for One**
 (Prefers Republican Party)

Representative, District No. 22

Position No. 1

- Jason Hearn
- Chris Reykdal
- _____
Write in

Two Year Term **Vote for One**
 (Prefers GOP Party)
 (Prefers Democratic Party)

Representative, District No. 22

Position No. 2

- Sam Hunt
- Chris Ward
- _____
Write in

Two Year Term **Vote for One**
 (Prefers Democratic Party)
 (States No Party Preference)

Senator, District No. 35

- Tim Sheldon
- Nancy (grandma) Williams
- _____
Write in

Four Year Term **Vote for One**
 (Prefers Democratic Party)
 (Prefers Republican Party)

State Legislature Partisan Offices (continued)

Representative, District No. 35

Position No. 1

- Kathy Haigh
- Daniel (Dan) Griffey
- _____
Write in

Two Year Term **Vote for One**
 (Prefers Democratic Party)
 (Prefers Republican Party)

Representative, District No. 35

Position No. 2

- Fred Finn
- Linda Simpson
- _____
Write in

Two Year Term **Vote for One**
 (Prefers Democratic Party)
 (Prefers Republican Party)

Thurston County Partisan Offices

Assessor

- Glen Morgan
- Steve Drew
- _____
Write in

Four Year Term **Vote for One**
 (Prefers Republican Party)
 (Prefers Democratic Party)

Auditor

- Kim Wyman
- Ric Abbett
- _____
Write in

Four Year Term **Vote for One**
 (Prefers Republican Party)
 (Prefers Democratic Party)

Clerk

- Betty J. Gould
- _____
Write in

Four Year Term **Vote for One**
 (Prefers Democratic Party)

County Commissioner, District No. 3

- Karen L. Valenzuela
- Pat Beehler
- _____
Write in

Four Year Term **Vote for One**
 (Prefers Democratic Party)
 (Prefers Republican Party)

Coroner

- Gary Warnock
- _____
Write in

Four Year Term **Vote for One**
 (Prefers Democratic Party)

Prosecuting Attorney

- Jon Tunheim
- _____
Write in

Four Year Term **Vote for One**
 (Prefers Democratic Party)

Thurston County Partisan Offices (Continued)

Sheriff

- Debra (Debbie) Mealy
- John Snaza
- _____
Write in

Four Year Term **Vote for One**
 (Prefers Democratic Party)
 (Prefers Independent Party)

Treasurer

- Tom Nelson
- Shawn Myers
- _____
Write in

Short + Four Year Term **Vote for One**
 (Prefers GOP Party)
 (Prefers Democratic Party)

State Judicial Nonpartisan Offices

Supreme Court Justice, Position No. 1

- Jim Johnson
- _____
Write in

Six Year Term **Vote for One**

Supreme Court Justice, Position No. 5

- Barbara Madsen
- _____
Write in

Six Year Term **Vote for One**

Supreme Court Justice, Position No. 6

- Richard B. Sanders
- Charlie Wiggins
- _____
Write in

Six Year Term **Vote for One**

County Judicial Nonpartisan Offices

District Court Judge, Position No. 1

- Kalo Wilcox
- _____
Write in

Four Year Term **Vote for One**

District Court Judge, Position No. 2

- Sam Meyer
- _____
Write in

Four Year Term **Vote for One**

District Court Judge, Position No. 3

- M. Brett Buckley
- _____
Write in

Four Year Term **Vote for One**

Thurston County Nonpartisan Offices

Public Utility District

Commissioner, District No. 2

Six Year Term

Vote for One

Alan M. Corwin

Write in

Local Measure

**Griffin School District No. 324
Technology and Capital Projects Levy
Proposition No. 1**

The Board of Directors of Griffin School District No. 324 adopted Resolution No. 09-10-13 concerning a capital and technology modernization levy. The proposition authorizes the modernization of facilities by implementing technology facilities and projects and the application and modernization of technology systems for operations and instruction and payments to Olympia School District for the expansion of Capital High School; and authorizes the following excess levies for such purposes on all taxable property within the District:

<u>Collection Year</u>	<u>Approximate Levy Rate per \$1,000 of Assessed Value</u>	<u>Levy Amount</u>
2011	\$0.497	\$550,000
2012	\$0.496	\$550,000
2013	\$0.495	\$550,000
2014	\$0.493	\$550,000

Should this proposition be approved?

Levy Yes

Levy No