

Sample Ballot Instructions
February 14, 2012 Special Election
Thurston County

Revised: December 2011

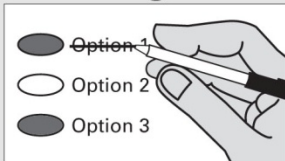
i Instructions

Marking Your Ballot



Completely fill in the oval to the left of your choice.
Use a dark blue or black ink pen. Do not use a pencil or gel pen.
Vote for one. If you vote for more than one, no votes for that candidate race or measure will be counted.

Correcting A Mistake



Do not erase any selection made in error. If you make a mistake, draw a line through the entire candidate's name or response.
If you wish to vote for another candidate or response, fill in the oval to the left of your corrected candidate or response.

Optional Write-In

To add a candidate, fill in the oval provided to the left of "write-in" and print the name on the line.

Additional Information

Read all instructions in your ballot packet.
Remember to sign and date the voter's declaration on the return envelope.
For a replacement ballot, please contact the Thurston County Auditor's Office at (360) 786-5408.
Deposit your ballot in a ballot drop box no later than 8:00 p.m. Election Day or mail using first class postage. It must be postmarked on or before Election Day.

For information about the location, hours, and services of the voting center, ballot drop boxes, and the availability of accessible voting equipment and locations call the Thurston County Auditor's Office at 360-786-5408.

Centralia School District No. 401-L

Proposition No. 1
Educational Maintenance and Operations Levy

To replace an expiring excess levy, the Centralia School District No. 401-L Board of Directors adopted Resolution #2011-25 concerning educational funding. This proposition authorizes the District to levy the following rates, in place of the expiring levy, on all taxable property within the District, to support the District's educational maintenance and operations:

Collection Year	Approximate Levy Rate per \$1,000 of Assessed Value	Levy Amount
2013	\$2.40	\$5,425,000
2014	\$2.49	\$5,625,000

Should this proposition be approved:

- Levy Yes
- Levy No

Griffin School District No. 324

Proposition No. 1
Maintenance and Operations Levy

The Board of Directors of Griffin School District No. 324 adopted Resolution No. 11-12-05, concerning a proposition to levy property taxes. This proposition would authorize the District to levy the following excess taxes, in place of an expiring levy, on all taxable property within the District, to support school programs and operations:

Collection Year	Approximate Levy Rate per \$1,000 of Assessed Value	Levy Amount
2013	\$2.32	\$2,225,000
2014	\$2.43	\$2,332,000

Should this proposition be approved:

- Levy Yes
- Levy No

North Thurston Public Schools

Proposition No. 1

Maintenance and Operations Levy

The Board of Directors of North Thurston Public Schools adopted Resolution No. 843 concerning a proposition to levy property taxes. Upon the expiration of the current maintenance and operation levy, the proposition would authorize the following taxes in excess of all regular property tax levies, upon all taxable property within the District for the District's general fund for purposes of operation and maintenance, including teaching, school supplies, athletics and activities, transportation and facilities maintenance and operations:

Collection Year	Approximate Levy Rate per \$1,000 of Assessed Value	Levy Amount
2013	\$3.50	\$30,700,000
2014	\$3.56	\$31,700,000
2015	\$3.59	\$32,500,000
2016	\$3.59	\$33,000,000

Should this proposition be approved:

Levy Yes

Levy No

Olympia School District No. 111

Proposition No. 1

Maintenance and Operations Levy

The Board of Directors of Olympia School District No. 111 adopted Resolution No. 479 concerning a proposition to levy property taxes. This proposition authorizes the District to levy the following excess taxes, to replace an expiring levy, on all the taxable property within the District, to support the District's educational maintenance and operations:

Collection Year	Approximate Levy Rate per \$1,000 of Assessed Value	Levy Amount
2013	\$3.11	\$21,980,000
2014	\$3.17	\$22,460,000
2015	\$3.21	\$22,960,000
2016	\$3.22	\$23,460,000

Should this proposition be approved:

Levy Yes

Levy No

Proposition No. 2

General Obligation Bonds - \$97,800,000

The Board of Directors approved Resolution No. 480 concerning this proposition for bonds. This proposition authorizes the District to construct and equip a new middle school and a new school for Olympia Regional Learning Academy; update and modernize Garfield Elementary School; and make other capital improvements to District facilities; to issue \$97,800,000 of general obligations bonds maturing within a maximum term of 20 years; and to levy excess property taxes annually to repay the bonds, as described in Resolution #480.

Should this proposition be:

Approved

Rejected

Rainier School District No. 307

Proposition No. 1
Maintenance and Operations Levy

The Board of Directors of Rainier School District No. 307 adopted Resolution No. 235 concerning a proposition to levy property taxes. This proposition authorizes the District to levy the following excess taxes, to replace an expiring levy, on all the taxable property within the District, for educational General Fund maintenance and operation expenses:

Collection Year	Approximate Levy Rate per \$1,000 of Assessed Value	Levy Amount
2013	\$3.96	\$1,690,000
2014	\$3.93	\$1,690,000
2015	\$3.90	\$1,690,000
2016	\$3.87	\$1,690,000

Should this proposition be approved:

- Levy Yes
- Levy No

Rochester School District No. 401

Proposition No. 1
Maintenance and Operations Levy

The Board of Directors of Rochester School District No. 401 adopted Resolution No. 12-11, concerning a proposition to levy property taxes. This proposition would authorize the District to meet the educational needs of its students by levying the following excess taxes, in place of an expiring levy, on all taxable property within the District, for support of the District's educational programs, maintenance and operations expenses:

Collection Year	Approximate Levy Rate per \$1,000 of Assessed Value	Levy Amount
2013	\$3.65	\$3,523,520
2014	\$3.79	\$3,664,460
2015	\$3.87	\$3,811,038
2016	\$3.95	\$3,963,480

Should this proposition be approved:

- Levy Yes
- Levy No

Tenino School District No. 402

Proposition No. 1
Maintenance and Operations Levy

The Board of Directors of Tenino School District No. 402 adopted Resolution No. 2:2011-2012 concerning a proposition to levy property taxes. This proposition would authorize the District to meet the educational needs of its students by levying the following excess taxes, in place of an expiring levy, on all taxable property within the District, for support of the District's educational programs, maintenance and operations expenses:

Collection Year	Approximate Levy Rate per \$1,000 of Assessed Value	Levy Amount
2013	\$3.37	\$2,800,513
2014	\$3.37	\$2,827,633
2015	\$3.37	\$2,855,909
2016	\$3.37	\$2,884,468

Should this proposition be approved:

- Levy Yes
- Levy No

Tumwater School District No. 33

Proposition No. 1
Maintenance and Operations Levy

The Board of Directors of Tumwater School District No. 33 adopted Resolution No. 03-11-12 concerning a proposition to levy property taxes. This proposition authorizes the District to levy the following excess taxes, to replace an expiring levy, on all taxable property within the District, to support the District's educational maintenance and operations:

Collection Year	Approximate Levy Rate per \$1,000 of Assessed Value	Levy Amount
2013	\$3.18	\$13,000,000
2014	\$3.26	\$13,600,000
2015	\$3.29	\$14,140,000
2016	\$3.29	\$14,710,000

Should this proposition be approved:

- Levy Yes
- Levy No

Yelm Community Schools

Proposition No. 1

Maintenance and Operations Levy

The Board of Directors of Yelm Community Schools adopted Resolution No. 03-11-12, concerning a proposition to levy property taxes. This proposition would authorize the District to meet the educational needs of its students by levying the following excess taxes, in place of an expiring levy, on all taxable property within the District, for the support of the District's educational programs, maintenance and operations expenses:

Collection Year	Approximate Levy Rate per \$1,000 of Assessed Value	Levy Amount
2013	\$3.71	\$9,300,000
2014	\$3.79	\$9,700,000
2015	\$3.83	\$10,100,000
2016	\$3.92	\$10,700,000

Should this proposition be approved:

Levy Yes

Levy No