

**Primary Sample Ballot Instructions**  
**August 4, 2015 Primary Election**  
**Thurston County**

Revised: May 2015

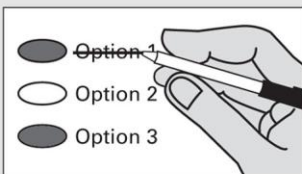
**i Instructions**

**Marking Your Ballot**



Fill in the oval to the left of your choice with a dark pen. Vote for one. If you vote for more than one, that race or measure will not be counted. To vote for a candidate not on the ballot, print the name on the dashed line and fill in the oval to the left.

**Making A Correction**



If you make a mistake, draw a line through the entire candidate's name or response. To vote for another candidate or response, fill in the oval to the left of your new selection.

**Additional Information**

Sign and date the voter's declaration on the return envelope.  
For a replacement ballot, contact the Thurston County Auditor's Office at (360) 786-5408.  
Deposit your ballot in a ballot drop box no later than 8:00 p.m. Election Day or mail using first class postage. It must be postmarked on or before Election Day.  
For a list of the people and organizations that donated to state and local candidates and ballot measure campaigns, visit [www.pdc.wa.gov](http://www.pdc.wa.gov).

For information about the location, hours, and services of the voting center; ballot drop boxes; and availability of accessible voting equipment and locations, call the Thurston County Auditor's Office at (360) 786-5408 or visit [ThurstonVotes.org](http://ThurstonVotes.org).

If returning your ballot by mail, first-class postage (\$0.49) is required.

**Note:** Not all of these candidates and measures will appear on your regular ballot. Your ballot will only contain the races and measures for which you are eligible to vote. Be sure to follow all instructions on your ballot.

**Thurston County Nonpartisan Offices**

**Port of Olympia**

**Port Commissioner, District No. 1**

**Four Year Term**

**Vote for One**

- George L. Barner Jr.
- Joseph Treacy Kreger
- Joe Downing
- 

**Port of Olympia**

**Port Commissioner, District No. 3**

**Two Year Unexpired Term**

**Vote for One**

- Elizabeth (E.J.) Zita
- Bob Jones
- Larry Goodman
- Jerry Farmer
- 

**City of Olympia**

**Mayor**

**Four Year Term**

**Vote for One**

- Marco Rosaire Rossi
- Cheryl L. Selby
- Prophet Atlantis
- 

**City of Olympia**

**City Council, Position No. 2**

**Four Year Term**

**Vote for One**

- Raymond Guerra
- Jessica Bateman
- Judy Bardin
- 

**City of Tenino**

**Mayor**

**Short + Four Year Term**

**Vote for One**

- Bret D. Brodersen
- Wayne Fournier
- John J. O'Callahan
-

**Thurston County Nonpartisan Offices (continued)**

**City of Tenino**

**City Council, Position No. 5**

**Four Year Term**

**Vote for One**

- Ken Jones
- Leslie Lamb
- Susan Copeland
- 

**City of Yelm**

**City Council, Position No. 6**

**Four Year Term**

**Vote for One**

- Preston Collins
- Terry Kaminski
- Joe DePinto
- 

**Centralia School District No. 401-L**

**School Board Director, Position No. 2**

**Four Year Term**

**Vote for One**

- John Elmore
- Kim L. Ashmore
- Ron Averill
-

**Local Measures**

**Fire Protection District No. 5 (Black Lake)  
 Proposition No. 1  
 Maintenance and Operations Levy**

The Board of Commissioners of Thurston County Fire Protection District No. 5 adopted Resolution No. 15-475, concerning a maintenance and operations levy. The proposition would authorize the District to maintain essential staffing, to pay regular maintenance and operational costs, to provide for the maintenance, repair and replacement of essential equipment and facilities, and authorize the following excess levies for such purposes on all taxable property within the District:

<u>Collection Year</u>	<u>Approximate Levy Rate per \$1,000 of Assessed Value</u>	<u>Levy Amount</u>
2016	\$0.196	\$100,688
2017	\$0.196	\$106,729
2018	\$0.196	\$113,133
2019	\$0.196	\$119,921

Should this proposition be:

- Approved
- Rejected

**Fire Protection District No. 9 (McLane)  
 Proposition No. 1  
 Maintenance and Operations Levy**

The Board of Commissioners of Thurston County Fire Protection District No. 9 adopted Resolution No. 15-474, concerning a maintenance and operations levy. The proposition would authorize the District to maintain essential staffing, to pay regular maintenance and operational costs, to provide for the maintenance, repair and replacement of essential equipment and facilities, and authorize the following excess levies for such purposes on all taxable property within the District:

<u>Collection Year</u>	<u>Approximate Levy Rate per \$1,000 of Assessed Value</u>	<u>Levy Amount</u>
2016	\$0.196	\$284,211
2017	\$0.196	\$301,264
2018	\$0.196	\$319,340
2019	\$0.196	\$338,500

Should this proposition be:

- Approved
- Rejected