

Primary Ballot Instructions
August 2, 2016 Primary Election
Thurston County

Revised: June 2016

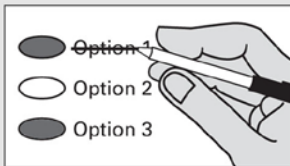
i Instructions

Marking Your Ballot



Fill in the oval to the left of your choice with a dark pen.
 Vote for one. If you vote for more than one, that race or measure will not be counted. To vote for a candidate not on the ballot, print the name on the dashed line and fill in the oval to the left.

Making A Correction



If you make a mistake, draw a line through the entire candidate's name or response.
 To vote for another candidate or response, fill in the oval to the left of your new selection.

Additional Information

Sign and date the voter's declaration on the return envelope.
 For a replacement ballot, contact the Thurston County Auditor's Office at (360) 786-5408.
 Deposit your ballot in a ballot drop box no later than 8:00 p.m. Election Day or mail using first class postage. It must be postmarked on or before Election Day.
 For a list of the people and organizations that donated to state and local candidates and ballot measure campaigns, visit www.pdc.wa.gov.

For information about the location, hours, and services of the voting center; ballot drop boxes; and availability of accessible voting equipment and locations, call the Thurston County Auditor's Office at (360) 786-5408 or visit ThurstonVotes.org. If returning your ballot by mail, first-class postage (\$0.47) is required.

Precinct Committee Officers (PCO): This office appears only on the Primary ballot if two candidates from the same party file for the same precinct. The names will appear in lot draw order. If only one person from a party files for a precinct they will be deemed elected at the close of filing and the office will not appear on the ballot. Write-ins are not permitted.

Voters may vote for only one candidate for PCO. If a voter votes for more than one candidate, the votes must be treated as overvotes. For the limited purpose of voting in a precinct committee officer election, a voter affiliates with a major political party when he or she votes for a candidate of that party.

Washington's Top 2 Primary Election:

In each race, you may vote for any candidate listed. The two candidates who receive the most votes in the August Primary will advance to the November General Election.

Each candidate for partisan office may state a political party that he or she prefers. A candidate's preference does not imply that the candidate is nominated or endorsed by the party, or that the party approves of or associates with that candidate.

Note: Not all of these candidates and measures will appear on your regular ballot. Your ballot will only contain the races and measures for which you are eligible to vote. Be sure to follow all instructions on your ballot.

READ: Each candidate for partisan office may state a political party that he or she prefers. A candidate’s preference does not imply that the candidate is nominated or endorsed by the party, or that the party approves of or associates with that candidate.

Federal Partisan Office

U. S. Senator **Six Year Term** **Vote for One**

- Philip L. Cornell
(Prefers Democratic Party)
- Sam Wright
(Prefers The Human Rights Party)
- Chris Vance
(Prefers Republican Party)
- Uncle Mover
(Prefers Republican Party)
- Zach Haller
(Prefers Independent Party)
- Donna Rae Lands
(Prefers Conservative Party)
- Mohammad Said
(Prefers Democratic Party)
- Eric John Makus
(Prefers Republican Party)
- Alex Tsimerman
(Prefers Standupamerica Party)
- Dr Pano Churchill
(Prefers Lincoln Caucus Party)
- Patty Murray
(Prefers Democratic Party)
- Ted Cummings
(Prefers Independent Party)
- Thor Amundson
(Prefers Democratic Party)
- Scott Nazarino
(Prefers Republican Party)
- Mike Luke
(Prefers Libertarian Party)
- Chuck Jackson
(Prefers Independent Party)
- Jeremy Teuton
(Prefers System Reboot Party)
-

Federal Partisan Offices (continued)

U. S. Representative, District No. 3

Two Year Term

Vote for One

- David McDevitt
(Prefers Democratic Party)
- Jim Moeller
(Prefers Democratic Party)
- Angela (Angie) Marx
(Prefers Democratic Party)
- Kathleen (Grandma Warrior) Arthur
(Prefers Democratic Party)
- Jaime Herrera Beutler
(Prefers Republican Party)
- L.A. (Worthy) Worthington
(States No Party Preference)
-

U. S. Representative, District No. 10

Two Year Term

Vote for One

- Jim Postma
(Prefers Republican Party)
- Richard Boyce
(States No Party Preference)
- Jennifer Gigi Ferguson
(Prefers Democratic Party)
- Denny Heck
(Prefers Democratic Party)
-

State Partisan Office

Governor

Four Year Term

Vote for One

- Goodspaceguy
(Prefers Republican Party)
- Bill Hirt
(Prefers Republican Party)
- Mary Martin
(Prefers Socialist Worker Party)
- Steve Rubenstein
(Prefers Independent Party)
- David W. Blomstrom
(Prefers Fifth Republic Party)
- Johnathan Dodds
(Prefers Democratic Party)
- Patrick O'Rourke
(Prefers Democratic Party)
- Christian Pierre Joubert
(Prefers Holistic Party)
- James Robert Deal
(Prefers Democratic Party)
- Jay Inslee
(Prefers Democratic Party)
- Bill Bryant
(Prefers Republican Party)
-

State Partisan Offices (continued)

Lieutenant Governor

Four Year Term

Vote for One

- Marty McClendon
(Prefers Republican Party)
- Mark Greene
(Prefers Citizens Party)
- Phillip Yin
(Prefers Republican Party)
- Steve Hobbs
(Prefers Democratic Party)
- Karen Fraser
(Prefers Democratic Party)
- Bill Penor
(Prefers Republican Party)
- Paul Addis
(Prefers Libertarian Party)
- Daniel B. Davies
(States No Party Preference)
- Karen Wallace
(Prefers Democratic Party)
- Cyrus Habib
(Prefers Democratic Party)
- Javier H. Figueroa
(Prefers Republican Party)
-

Secretary of State

Four Year Term

Vote for One

- Tina Podlodowski
(Prefers Democratic Party)
- Kim Wyman
(Prefers Republican Party)
- Tim Turner
(Prefers Libertarian Party)
-

State Partisan Offices (continued)

State Treasurer

Four Year Term

Vote for One

- John Paul Comerford
(Prefers Democratic Party)
- Marko Liias
(Prefers Democratic Party)
- Duane Davidson
(Prefers Republican Party)
- Michael Waite
(Prefers Republican Party)
- Alec Fiskien
(Prefers Democratic Party)
-

State Auditor

Four Year Term

Vote for One

- Pat (Patrice) McCarthy
(Prefers Democratic Party)
- David Golden
(States No Party Preference)
- Mark Wilson
(Prefers Independent Party)
- Mark Miloscia
(Prefers Republican Party)
- Jeff Sprung
(Prefers Democratic Party)
-

Attorney General

Four Year Term

Vote for One

- Bob Ferguson
(Prefers Democratic Party)
- Joshua B. Trumbull
(Prefers Libertarian Party)
-

State Partisan Office (continued)

Commissioner of Public Lands

Four Year Term

Vote for One

- Hilary Franz
(Prefers Democratic Party)
- Mary Verner
(Prefers Democratic Party)
- Steven M. Nielson
(Prefers Libertarian Party)
- Dave Upthegrove
(Prefers Democratic Party)
- Karen Porterfield
(Prefers Democratic Party)
- Steve McLaughlin
(Prefers Republican Party)
- John Stillings
(Prefers Democratic Party)
-

State Nonpartisan Office

Superintendent of Public Instruction

Four Year Term

Vote for One

- John Patterson Blair
- Chris Reykdal
- Ron Higgins
- Grazyna Prouty
- Robin Fleming
- Al Runte
- Erin Jones
- KumRoon (Mr. Mak) Maksirisombat
- David Spring
-

State Partisan Office

Insurance Commissioner

Four Year Term

Vote for One

- Mike Kreidler
(Prefers Democratic Party)
- Justin Murta
(Prefers Libertarian Party)
- Richard Schrock
(Prefers Republican Party)
-

State Legislative Partisan Offices

Senator, District No. 2

Four Year Term

Vote for One

- Randi Becker
(Prefers Republican Party)
- Tamborine Borrelli
(Prefers Democratic Party)
- Marilyn Rasmussen
(Prefers Democratic Party)
-

**Representative, District No. 2
Position No. 1**

Short + Two Year Term

Vote for One

- Amy Pivetta Hoffman
(Prefers Independent Dem. Party)
- Andrew Barkis
(Prefers Republican Party)
-

**Representative, District No. 2
Position No. 2**

Two Year Term

Vote for One

- JT Wilcox
(Prefers Republican Party)
- Nathaniel Downes
(Prefers Democratic Party)
- Derek Maynes
(Prefers Democratic Party)
-

Senator, District No. 20

Four Year Term

Vote for One

- John Braun
(Prefers Republican Party)
-

**Representative, District No. 20
Position No. 1**

Two Year Term

Vote for One

- Richard DeBolt
(Prefers GOP Party)
-

**Representative, District No. 20
Position No. 2**

Two Year Term

Vote for One

- Ed Orcutt
(Prefers Republican Party)
-

State Legislative Partisan Offices (continued)

Senator, District No. 22

Four Year Term

Vote for One

- Erik Lee
(Prefers Democratic Party)
- Steve Owens
(States No Party Preference)
- Sam Hunt
(Prefers Democratic Party)
- Spencer Baldwin
(Prefers Democratic Party)
-

**Representative, District No. 22
Position No. 1**

Two Year Term

Vote for One

- Rhenda Iris Strub
(Prefers Democratic Party)
- Franklin Edwards
(Prefers Democrat Party)
- Laurie Dolan
(Prefers Democratic Party)
- Donald Austin
(Prefers Republican Party)
- Karen Johnson
(Prefers Democratic Party)
-

**Representative, District No. 22
Position No. 2**

Two Year Term

Vote for One

- Beth Doglio
(Prefers Democratic Party)
-

**Representative, District No. 35
Position No. 1**

Two Year Term

Vote for One

- Dan Griffey
(Prefers Republican Party)
- Irene Bowling
(Prefers Independent Dem. Party)
-

State Legislative Partisan Offices (continued)

**Representative, District No. 35
Position No. 2**

Two Year Term

Vote for One

- Drew C. MacEwen
(Prefers Republican Party)
- Craig Patti
(Prefers Independent Dem. Party)
-

Thurston County Partisan Offices

**County Commissioner
Commissioner, District No. 1**

Four Year Term

Vote for One

- Jim Cooper
(Prefers Democratic Party)
- Jon Pettit
(Prefers Independent Party)
- Allen Miller
(States No Party Preference)
- Diane Dondero
(Prefers Democratic Party)
- John (Hutch) Hutchings
(Prefers Independent Party)
-

**County Commissioner
Commissioner, District No. 2**

Four Year Term

Vote for One

- Gary Edwards
(States No Party Preference)
- Kelsey Hulse
(Prefers Democratic Party)
-

State Judicial Nonpartisan Office

**Supreme Court
Justice, Position No. 5**

Six Year Term

Vote for One

- Barbara Madsen
- Greg Zempel
- (Zamboni) John Scannell
-

Local Measures

Fire Protection District No. 6 (East Olympia)

Proposition No. 1

Bonds to acquire new and upgrade existing equipment and facilities - \$2,000,000

The Board of Commissioners of Thurston County Fire Protection District No. 6, doing business as East Olympia Fire District 6, adopted Resolution No. 16-02, concerning a proposition to finance capital equipment and fire station upgrades. This proposition would authorize the District to acquire new and upgrade existing emergency response vehicles, acquire new and upgrade existing firefighter safety and other capital equipment, remodel and upgrade existing fire station facilities, and undertake other capital projects throughout the District; issue no more than \$2,000,000 of general obligation bonds maturing within six years; and levy annual excess property taxes to pay the bonds, all as provided in Resolution No. 16-02.

Should this proposition be:

- Approved
- Rejected

SE Thurston Fire Authority

Proposition No. 1

Authorizing restoration of previous property tax levy – Levy Lid Lift

The Board of Fire Commissioners of SE Thurston Fire Authority adopted Resolution No. 2016-FA-03 concerning a proposition to restore the Fire Authority's regular property tax levy. If approved, this proposition would restore the 2017 regular property tax levy to \$1.50 per \$1,000 assessed valuation and setting the limit factor for calculating levy rates in 2018 through 2022 at 106% (not to exceed a rate of \$1.50). Revenues would be used for fire protection, prevention, and emergency medical services. The maximum permitted levy amount for 2022 becomes the base for computing levy limits after this measure's expiration.

Should this proposition be:

- Approved
- Rejected

Precinct Committee Officer

**Election of Political Party
Precinct Committee Officer**

For this office only: In order to vote for precinct committee officer, a partisan office, you must affirm that you are a Democrat or a Republican and may vote only for one candidate from the party you select. Your vote for a candidate affirms your affiliation with the same party as the candidate. This preference is private and will not be matched to your name or shared.

Precinct Committee Officer

Two Year Term

Vote for One

- PCO candidate – Dem
I affirm I am a Democrat
- PCO candidate – Dem
I affirm I am a Democrat
- PCO candidate – Rep
I affirm I am a Republican
- PCO candidate – Rep
I affirm I am a Republican