

**General Sample Ballot Instructions
November 8, 2016 General Election
Thurston County, WA**

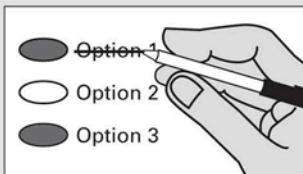
Revised: September 2016

i Instructions



Marking Your Ballot

Use a dark pen. Fill in the oval to the left of your choice.
Vote for one. If you vote for more than one, that race or measure will not be counted. To vote for a candidate not on the ballot, print the name on the dashed line and fill in the oval to the left.



Making A Correction

Draw a line through the entire candidate's name or response.
To vote for another candidate or response, fill in the oval to the left of your new selection.

Additional Information

Sign and date the voter's declaration on the return envelope.
For a replacement ballot, call the Thurston County Auditor's Office at (360) 786-5408.
Deposit your ballot in a ballot drop box no later than 8:00 p.m. Election Day or mail using first class postage. It must be postmarked on or before Election Day.
For a list of the people and organizations that donated to state and local candidates and ballot measure campaigns, visit www.pdc.wa.gov.

For information about the location, hours, and services of the voting center; ballot drop boxes; and availability of accessible voting equipment and locations, call the Thurston County Auditor's Office at (360) 786-5408 or visit ThurstonVotes.org. If returning your ballot by mail, first-class postage (\$0.47) is required.

Initiatives to the People

Initiative Measure No. 1433

Initiative Measure No. 1433 concerns labor standards. This measure would increase the state minimum wage to \$11.00 in 2017, \$11.50 in 2018, \$12.00 in 2019, and \$13.50 in 2020, require employers to provide paid sick leave, and adopt related laws.

Should this measure be enacted into law?

- Yes
- No

Initiative Measure No. 1464

Initiative Measure No. 1464 concerns campaign finance laws and lobbyists. This measure would create a campaign-finance system; allow residents to direct state funds to candidates; repeal the non-resident sales-tax exemption; restrict lobbying employment by certain former public employees; and add enforcement requirements.

Should this measure be enacted into law?

- Yes
- No

Initiative Measure No. 1491

Initiative Measure No. 1491 concerns court-issued extreme risk protection orders temporarily preventing access to firearms. This measure would allow police, family, or household members to obtain court orders temporarily preventing firearms access by persons exhibiting mental illness, violent or other behavior indicating they may harm themselves or others.

Should this measure be enacted into law?

- Yes
- No

Initiative to the People

Initiative Measure No. 1501

Initiative Measure No. 1501 concerns seniors and vulnerable individuals. This measure would increase the penalties for criminal identity theft and civil consumer fraud targeted at seniors or vulnerable individuals; and exempt certain information of vulnerable individuals and in-home caregivers from public disclosure.

Should this measure be enacted into law?

- Yes
- No

Initiative to the Legislature

Initiative Measure No. 732

Initiative Measure No. 732 concerns taxes. This measure would impose a carbon emission tax on certain fossil fuels and fossil-fuel-generated electricity, reduce the sales tax by one percentage point and increase a low-income exemption, and reduce certain manufacturing taxes.

Should this measure be enacted into law?

- Yes
- No

Note: Not all of these candidates and measures will appear on your regular ballot. Your ballot will only contain the races and measures for which you are eligible to vote. Be sure to follow all instructions on your ballot.

Initiative to the Legislature

Initiative Measure No. 735

Initiative Measure No. 735 concerns a proposed amendment to the federal constitution. This measure would urge the Washington state congressional delegation to propose a federal constitutional amendment that constitutional rights belong only to individuals, not corporations, and constitutionally-protected free speech excludes the spending of money.

Should this measure be enacted into law?

- Yes
- No

Advisory Vote

**Advisory Vote No. 14
House Bill 2768**

The legislature extended, without a vote of the people, the insurance premium tax to some insurance for stand-alone family dental plans, costing an indeterminate amount in the first ten years, for government spending.

This tax increase should be:

- Repealed
- Maintained

Advisory Vote

**Advisory Vote No. 15
Second Engrossed Substitute House Bill 2778**

The legislature imposed, without a vote of the people, certain limitations on the retail sales and use tax exemptions for clean alternative-fuel vehicles, costing \$2,000,000 in the first ten years, for government spending.

This tax increase should be:

- Repealed
- Maintained

Proposed Amendment to the State Constitution

Senate Joint Resolution No. 8210

The legislature has proposed a constitutional amendment on the deadline for completing state legislative and congressional redistricting. This amendment would require the state redistricting commission to complete redistricting for state legislative and congressional districts by November 15 of each year ending in a one, 46 days earlier than currently required.

Should this constitutional amendment be:

- Approved
- Rejected

If a primary election was held for an office, the two candidates who received the most votes in the Primary advanced to the General Election.

Each candidate for partisan office may state a political party that he or she prefers. A candidate's preference does not imply that the candidate is nominated or endorsed by the party, or that the party approves of or associates with that candidate.

The election for President and Vice President is different. Candidates for President and Vice President are the official nominees of their political party.

READ: Each candidate for President and Vice President is the official nominee of a political party. For other partisan offices, each candidate may state a political party that he or she prefers. A candidate's preference does not imply that the candidate is nominated or endorsed by the party, or that the party approves of or associates with that candidate.

Federal Partisan Offices

Federal Partisan Office

**President / Vice President
Four Year Term Vote for One**

- Hillary Clinton / Tim Kaine
Democratic Party Nominees
- Donald J. Trump / Michael R. Pence
Republican Party Nominees
- Alyson Kennedy / Osborne Hart
Socialist Workers Party Nominees
- Gloria Estela La Riva / Eugene Puryear
Socialism & Liberation Party Nominees
- Jill Stein / Ajamu Baraka
Green Party Nominees
- Darrell L. Castle / Scott N. Bradley
Constitution Party Nominees
- Gary Johnson / Bill Weld
Libertarian Party Nominees
- (Include Party)

**U.S. Senator
Six Year Term Vote for One**

- Patty Murray
(Prefers Democratic Party)
- Chris Vance
(Prefers Republican Party)
-

**U.S. Representative, District No. 3
Two Year Term Vote for One**

- Jaime Herrera Beutler
(Prefers Republican Party)
- Jim Moeller
(Prefers Democratic Party)
-

**U.S. Representative, District No. 10
Two Year Term Vote for One**

- Denny Heck
(Prefers Democratic Party)
- Jim Postma
(Prefers Republican Party)
-

Note: Not all of these candidates and measures will appear on your regular ballot. Your ballot will only contain the races and measures for which you are eligible to vote. Be sure to follow all instructions on your ballot.

**State
Partisan Offices**

**Governor
Four Year Term** **Vote for One**

- Jay Inslee
(Prefers Democratic Party)
- Bill Bryant
(Prefers Republican Party)
-

**Lieutenant Governor
Four Year Term** **Vote for One**

- Cyrus Habib
(Prefers Democratic Party)
- Marty McClendon
(Prefers Republican Party)
-

**Secretary of State
Four Year Term** **Vote for One**

- Kim Wyman
(Prefers Republican Party)
- Tina Podlodowski
(Prefers Democratic Party)
-

**State Treasurer
Four Year Term** **Vote for One**

- Duane Davidson
(Prefers Republican Party)
- Michael Waite
(Prefers Republican Party)
-

**State
Partisan Offices**

**State Auditor
Four Year Term** **Vote for One**

- Mark Miloscia
(Prefers Republican Party)
- Pat (Patrice) McCarthy
(Prefers Democratic Party)
-

**Attorney General
Four Year Term** **Vote for One**

- Bob Ferguson
(Prefers Democratic Party)
- Joshua B. Trumbull
(Prefers Libertarian Party)
-

**Commissioner of Public Lands
Four Year Term** **Vote for One**

- Steve McLaughlin
(Prefers Republican Party)
- Hilary Franz
(Prefers Democratic Party)
-

**State
Nonpartisan Office**

**Superintendent of Public Instruction
Four Year Term** **Vote for One**

- Erin Jones
- Chris Reykdal
-

Note: Not all of these candidates and measures will appear on your regular ballot. Your ballot will only contain the races and measures for which you are eligible to vote. Be sure to follow all instructions on your ballot.

**State
Partisan Office**

**Insurance Commissioner
Four Year Term Vote for One**

- Mike Kreidler
(Prefers Democratic Party)
- Richard Schrock
(Prefers Republican Party)
-

**State
Legislative Partisan Offices**

**Representative, District No. 2
Position No. 2
Two Year Term Vote for One**

- JT Wilcox
(Prefers Republican Party)
- Derek Maynes
(Prefers Democratic Party)
-

**State
Legislative Partisan Offices**

**Senator, District No. 2
Four Year Term Vote for One**

- Randi Becker
(Prefers Republican Party)
- Marilyn Rasmussen
(Prefers Democratic Party)
-

**Senator, District No. 20
Four Year Term Vote for One**

- John Braun
(Prefers Republican Party)
-

**Representative, District No. 2
Position No. 1
Short + Two Year Term Vote for One**

- Andrew Barkis
(Prefers Republican Party)
- Amy Pivetta Hoffman
(Prefers Independent Dem. Party)
-

**Representative, District No. 20
Position No. 1
Two Year Term Vote for One**

- Richard DeBolt
(Prefers GOP Party)
-

**Representative, District No. 20
Position No. 2
Two Year Term Vote for One**

- Ed Orcutt
(Prefers Republican Party)
-

Note: Not all of these candidates and measures will appear on your regular ballot. Your ballot will only contain the races and measures for which you are eligible to vote. Be sure to follow all instructions on your ballot.

**State
Legislative Partisan Offices**

**Senator, District No. 22
Four Year Term** **Vote for One**

- Sam Hunt
(Prefers Democratic Party)
- Steve Owens
(States No Party Preference)
-

**Representative, District No. 22
Position No. 1
Two Year Term** **Vote for One**

- Laurie Dolan
(Prefers Democratic Party)
- Donald Austin
(Prefers Republican Party)
-

**Representative, District No. 22
Position No. 2
Two Year Term** **Vote for One**

- Beth Doglio
(Prefers Democratic Party)
-

**Representative, District No. 35
Position No. 1
Two Year Term** **Vote for One**

- Dan Griffey
(Prefers Republican Party)
- Irene Bowling
(Prefers Independent Dem. Party)
-

**State
Legislative Partisan Office**

**Representative, District No. 35
Position No. 2
Two Year Term** **Vote for One**

- Drew C. MacEwen
(Prefers Republican Party)
- Craig Patti
(Prefers Independent Dem. Party)
-

**County
Partisan Offices**

**County Commissioner
Commissioner, District No. 1
Four Year Term** **Vote for One**

- Jim Cooper
(Prefers Democratic Party)
- John (Hutch) Hutchings
(Prefers Independent Party)
-

**County Commissioner
Commissioner, District No. 2
Four Year Term** **Vote for One**

- Gary Edwards
(States No Party Preference)
- Kelsey Hulse
(Prefers Democratic Party)
-

Note: Not all of these candidates and measures will appear on your regular ballot. Your ballot will only contain the races and measures for which you are eligible to vote. Be sure to follow all instructions on your ballot.

**State
Judicial Nonpartisan Offices**

**Supreme Court
Justice, Position No. 1
Six Year Term** **Vote for One**

- Mary Yu
- David DeWolf
-

**Supreme Court
Justice, Position No. 5
Six Year Term** **Vote for One**

- Barbara Madsen
- Greg Zempel
-

**Supreme Court
Justice, Position No. 6
Six Year Term** **Vote for One**

- Charles (Charlie) Wiggins
- Dave Larson
-

**County
Judicial Nonpartisan Office**

**Superior Court
Judge, Position No. 7
Four Year Term** **Vote for One**

- John C. Skinder
- Jim Foley
-

**County
Nonpartisan Office**

**Public Utility District
Commissioner, District No. 2
Six Year Term** **Vote for One**

- Russ Olsen
-

**County
Judicial Nonpartisan Office**

**Superior Court
Judge, Position No. 1
Four Year Term** **Vote for One**

- Chris Lanese
- Laura M. Murphy
-

Note: Not all of these candidates and measures will appear on your regular ballot. Your ballot will only contain the races and measures for which you are eligible to vote. Be sure to follow all instructions on your ballot.

City of Olympia

Initiative No. 1

Initiative Measure No. 1 concerns establishing and funding a college grant program.

This measure would establish a City of Olympia college grant program. City residents who graduate from public high school or receive a GED could receive grants for at least one year of community college tuition, or an equivalent sum to attend public colleges and universities in Washington. Grants would be funded by a 1.5% tax on household income above \$200,000, and also may be privately funded. Administrative expenses would be capped at 5%.

Should this measure be enacted into law?

- Yes
- No

City of Tumwater

Proposition No. 1
Advisory Fireworks Ban

Shall the sale and discharge of fireworks be prohibited within the City of Tumwater at all times of the year with the exception of public displays and the sale, use and discharge of small trick and novelty devices?

Should this ban be enacted?

- Yes
- No