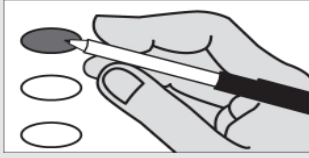


# Thurston County Sample Ballot

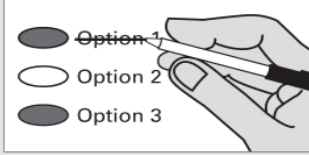
## **i** Instructions

### Marking Your Ballot



Completely fill in the oval to the left of your choice.  
Use a dark blue or black ink pen. Do not use a pencil or gel pen.  
Vote for one. If you vote for more than one, no votes for that candidate race or measure will be counted.

### Correcting A Mistake



Do not erase any selection made in error. If you make a mistake, draw a line through the entire candidate's name or response.  
If you wish to vote for another candidate or response, fill in the oval to the left of your corrected candidate or response.

### Optional Write-In

To add a candidate, fill in the oval provided to the left of "write-in" and print the name on the line.

### Additional Information

Read all instructions in your ballot packet.  
Remember to sign and date the voter's declaration on the return envelope.  
For a replacement ballot, please contact the Thurston County Auditor's Office at (360) 786-5408.  
Deposit your ballot in a ballot drop box no later than 8:00 p.m. Election Day or mail using first class postage. It must be postmarked on or before Election Day.

This sample ballot contains all candidates and measures certified to appear on the November 6, 2012, General Election ballot. Be sure to follow all instructions on your actual ballot. Ballots will begin arriving on October 18, 2012. Please refer to the Thurston County Auditor's Office website at [www.ThurstonVotes.org](http://www.ThurstonVotes.org) for additional election information.

**Note:** Not all of these candidates and measures will appear on your ballot. Your ballot will contain only the races and measures for which you are eligible to vote.

Sample Ballot

## State Measures

### Proposed by Initiative Petition

#### Initiative Measure No. 1185

Initiative Measure No. 1185 concerns tax and fee increases imposed by state government. This measure would restate existing statutory requirements that legislative actions raising taxes must be approved by two-thirds legislative majorities or receive voter approval, and that new or increased fees require majority legislative approval.

Should this measure be enacted into law?

- Yes  
 No

### Proposed by Initiative Petition

#### Initiative Measure No. 1240

Initiative Measure No. 1240 concerns creation of a public charter school system. This measure would authorize up to forty publicly-funded charter schools open to all students, operated through approved, nonreligious, nonprofit organizations, with government oversight; and modify certain laws applicable to them as public schools.

Should this measure be enacted into law?

- Yes  
 No

### Passed by the Legislature and Ordered Referred by Petition

#### Referendum Measure No. 74

The legislature passed Engrossed Substitute Senate Bill 6239 concerning marriage for same-sex couples, modified domestic-partnership law, and religious freedom, and voters have filed a sufficient referendum petition on this bill. This bill would allow same-sex couples to marry, preserve domestic partnerships only for seniors, and preserve the right of clergy or religious organizations to refuse to perform, recognize, or accommodate any marriage ceremony.

Should this bill be:

- Approved  
 Rejected

## State Measures

### Proposed to the Legislature and Referred to the People

#### Initiative Measure No. 502

Initiative Measure No. 502 concerns marijuana. This measure would license and regulate marijuana production, distribution, and possession for persons over twenty-one; remove state-law criminal and civil penalties for activities that it authorizes; tax marijuana sales; and earmark marijuana-related revenues.

Should this measure be enacted into law?

- Yes  
 No

### Proposed to the People by the Legislature - Amendment to the State Constitution

#### Engrossed Senate Joint Resolution No. 8221

The Legislature has proposed a constitutional amendment on implementing the Commission on State Debt recommendations regarding Washington's debt limit. This amendment would, starting July 1, 2014, phase-down the debt limit percentage in three steps from nine to eight percent and modify the calculation date, calculation period, and the term general state revenues.

Should this constitutional amendment be:

- Approved  
 Rejected

### Proposed to the People by the Legislature - Amendment to the State Constitution

#### Senate Joint Resolution No. 8223

The Legislature has proposed a constitutional amendment on investments by the University of Washington and Washington State University. This amendment would create an exception to constitutional restrictions on investing public funds by allowing these universities to invest specified public funds as authorized by the legislature, including in private companies or stock.

Should this constitutional amendment be:

- Approved  
 Rejected

## State Measures

### Advisory Vote of the People Advisory Vote No. 1

#### Engrossed Senate Bill 6635

The legislature eliminated, without a vote of the people, a business and occupation tax deduction for certain financial institutions' interest on residential loans, costing \$170,000,000, in its first ten years, for government spending.

This tax increase should be:

- Repealed  
 Maintained

### Advisory Vote of the People Advisory Vote No. 2

#### Substitute House Bill 2590

The legislature extended, without a vote of the people, expiration of a tax on possession of petroleum products and reduced the tax rate, costing \$24,000,000, in its first ten years, for government spending.

This tax increase should be:

- Repealed  
 Maintained

## County Measure

### Thurston County Proposition No. 1

Shall Public Utility District No. 1 of Thurston County construct or acquire electric facilities for the generation, transmission or distribution of electric power?

- Yes  
 No

If a primary election was held for an office, the two candidates who received the most votes in the Primary advanced to the General Election.

Each candidate for partisan office may state a political party that he or she prefers. A candidate's preference does not imply that the candidate is nominated or endorsed by the party, or that the party approves of or associates with that candidate.

The election for President and Vice President is different. Candidates for President and Vice President are the official nominees of their political party.

# Thurston County Sample Ballot

## Federal Partisan Offices

### President / Vice President

Four Year Term Vote for One

- Barack Obama / Joe Biden  
Democratic Party Nominees
- Mitt Romney / Paul Ryan  
Republican Party Nominees
- Gary Johnson / James P. Gray  
Libertarian Party Nominees
- Virgil Goode / James N. Clymer  
Constitution Party Nominees
- Jill Stein / Cheri Honkala  
Green Party Nominees
- Peta Lindsay / Yari Osorio  
Socialism & Liberation Party Nominees
- James Harris / Alyson Kennedy  
Socialist Workers Party Nominees
- Ross C. (Rocky) Anderson /  
Luis J. Rodriguez  
Justice Party Nominees
- \_\_\_\_\_  
Write-in (Include Party)

### READ:

**Each candidate for President and Vice President is the official nominee of a political party. For other partisan offices, each candidate may state a political party that he or she prefers. A candidate's preference does not imply that the candidate is nominated or endorsed by the party, or that the party approves of or associates with that candidate.**

## Federal Partisan Offices

### U.S. Senator

Six Year Term Vote for One

- Maria Cantwell  
(Prefers Democratic Party)
- Michael Baumgartner  
(Prefers Republican Party)
- \_\_\_\_\_  
Write-in

### U.S. Representative Congressional District No. 3

Two Year Term Vote for One

- Jaime Herrera Beutler  
(Prefers Republican Party)
- Jon T. Haugen  
(Prefers Democratic Party)
- \_\_\_\_\_  
Write-in

## Federal Partisan Offices

### U.S. Representative Congressional District No. 10

Two Year Term Vote for One

- Denny Heck  
(Prefers Democratic Party)
- Richard (Dick) Muri  
(Prefers Republican Party)
- \_\_\_\_\_  
Write-in

## State Partisan Offices

### Governor

Four Year Term Vote for One

- Jay Inslee  
(Prefers Democratic Party)
- Rob McKenna  
(Prefers Republican Party)
- \_\_\_\_\_  
Write-in

### Lieutenant Governor

Four Year Term Vote for One

- Brad Owen  
(Prefers Democrat Party)
- Bill Finkbeiner  
(Prefers Republican Party)
- \_\_\_\_\_  
Write-in

### Secretary of State

Four Year Term Vote for One

- Kim Wyman  
(Prefers Republican Party)
- Kathleen Drew  
(Prefers Democratic Party)
- \_\_\_\_\_  
Write-in

### State Treasurer

Four Year Term Vote for One

- Jim McIntire  
(Prefers Democratic Party)
- Sharon Hanek  
(Prefers Republican Party)
- \_\_\_\_\_  
Write-in

### State Auditor

Four Year Term Vote for One

- James Watkins  
(Prefers Republican Party)
- Troy Kelley  
(Prefers Democratic Party)
- \_\_\_\_\_  
Write-in

**Note:** Not all of these candidates and measures will appear on your ballot. Your ballot will contain only the races and measures for which you are eligible to vote.

## State Partisan Offices

### Attorney General

Four Year Term Vote for One

- Bob Ferguson  
(Prefers Democratic Party)
- Reagan Dunn  
(Prefers Republican Party)
- \_\_\_\_\_  
Write-in

### Commissioner of Public Lands

Four Year Term Vote for One

- Peter J. Goldmark  
(Prefers Democratic Party)
- Clint Didier  
(Prefers Republican Party)
- \_\_\_\_\_  
Write-in

## State Nonpartisan Office

### Superintendent of Public Instruction

Four Year Term Vote for One

- Randy I. Dorn
- \_\_\_\_\_  
Write-in

## State Partisan Office

### Insurance Commissioner

Four Year Term Vote for One

- Mike Kreidler  
(Prefers Democratic Party)
- John R. Adams  
(Prefers Republican Party)
- \_\_\_\_\_  
Write-in

## State Legislative Partisan Offices

### Legislative District No. 2

#### Senator

Four Year Term Vote for One

- Randi Becker  
(Prefers Republican Party)
- Bruce L. Lachney  
(Prefers Democratic Party)
- \_\_\_\_\_  
Write-in

### Legislative District No. 2

#### Representative Position No. 1

Two Year Term Vote for One

- Gary Alexander  
(Prefers Republican Party)
- Greg Hartman  
(Prefers Democratic Party)
- \_\_\_\_\_  
Write-in

# Thurston County Sample Ballot

Sample Ballot

## State Legislative Partisan Offices

**Legislative District No. 2**  
**Representative Position No. 2**  
 Two Year Term Vote for One

- J.T. Wilcox  
(Prefers Republican Party)
- \_\_\_\_\_  
Write-in

**Legislative District No. 20**  
**Senator**  
 Four Year Term Vote for One

- Dan Swecker  
(Prefers Republican Party)
- John E. Braun  
(Prefers Republican Party)
- \_\_\_\_\_  
Write-in

**Legislative District No. 20**  
**Representative Position No. 1**  
 Two Year Term Vote for One

- Richard DeBolt  
(Prefers Republican Party)
- \_\_\_\_\_  
Write-in

**Legislative District No. 20**  
**Representative Position No. 2**  
 Two Year Term Vote for One

- Ed Orcutt  
(Prefers Republican Party)
- John Morgan  
(Prefers Republican Party)
- \_\_\_\_\_  
Write-in

**Legislative District No. 22**  
**Senator**  
 Four Year Term Vote for One

- Karen Fraser  
(Prefers Democratic Party)
- \_\_\_\_\_  
Write-in

**Legislative District No. 22**  
**Representative Position No. 1**  
 Two Year Term Vote for One

- Chris Reykdal  
(Prefers Democratic Party)
- \_\_\_\_\_  
Write-in

**Legislative District No. 22**  
**Representative Position No. 2**  
 Two Year Term Vote for One

- Sam Hunt  
(Prefers Democratic Party)
- \_\_\_\_\_  
Write-in

## State Legislative Partisan Offices

**Legislative District No. 35**  
**Representative Position No. 1**  
 Two Year Term Vote for One

- Kathy Haigh  
(Prefers Democratic Party)
- Dan Griffey  
(Prefers Republican Party)
- \_\_\_\_\_  
Write-in

**Legislative District No. 35**  
**Representative Position No. 2**  
 Two Year Term Vote for One

- Drew C. MacEwen  
(Prefers Republican Party)
- Lynda Ring-Erickson  
(Prefers Democratic Party)
- \_\_\_\_\_  
Write-in

## Thurston County Partisan Offices

**County Commissioner**  
**District No. 1**  
 Four Year Term Vote for One

- Cathy Wolfe  
(Prefers Democratic Party)
- Karen Rogers  
(Prefers Democratic Party)
- \_\_\_\_\_  
Write-in

**County Commissioner**  
**District No. 2**  
 Four Year Term Vote for One

- Sandra Romero  
(Prefers Democratic Party)
- Andrew Barkis  
(Prefers Republican Party)
- \_\_\_\_\_  
Write-in

## State Judicial Nonpartisan Offices

**Supreme Court Justice**  
**Position No. 2**  
 Six Year Term Vote for One

- Susan Owens
- \_\_\_\_\_  
Write-in

**Supreme Court Justice**  
**Position No. 8**  
 Short + Six Year Term Vote for One

- Steve Gonzalez
- \_\_\_\_\_  
Write-in

**Note:** Not all of these candidates and measures will appear on your ballot. Your ballot will contain only the races and measures for which you are eligible to vote.

## State Judicial Nonpartisan Offices

**Supreme Court Justice**  
**Position No. 9**  
 Six Year Term Vote for One

- Sheryl Gordon McCloud
- Richard B. Sanders
- \_\_\_\_\_  
Write-in

**Court of Appeals, Division 2, District No. 2**  
**Position No. 2**  
 Six Year Term Vote for One

- Pamela (Pam) Loginsky
- Thomas Bjorgen
- \_\_\_\_\_  
Write-in

## County Judicial Nonpartisan Offices

**Superior Court Judge**  
**Position No. 2**  
 Four Year Term Vote for One

- Christine Schaller
- Jim Johnson
- \_\_\_\_\_  
Write-in

**Superior Court Judge**  
**Position No. 4**  
 Four Year Term Vote for One

- Erik D. Price
- Indu Thomas
- \_\_\_\_\_  
Write-in

## Thurston County Nonpartisan Office

**Public Utility District**  
**Commissioner, District No. 1**  
 Short + Six Year Term Vote for One

- Linda Oosterman
- Steve Fossum
- \_\_\_\_\_  
Write-in

## Local Measures

**City of Olympia - Proposition No. 1**  
**Sales and Use Tax Increase of 0.1% for Public Safety and Criminal Justice Purposes**

The City Council of the City of Olympia adopted Resolution No. M-1780 concerning a sales and use tax increase pursuant to RCW 82.14.450. If approved, this proposition would authorize the City to impose an additional sales and use tax of 0.1%, split between the City (85%) and Thurston County (15%) as required by state law. City proceeds shall be used for public safety and criminal justice purposes as allowed by RCW 82.14.450.

Should this proposition be:

- Approved
- Rejected

**Tanglewilde Parks and Recreation District**  
**Proposition No. 1**  
**Property Tax Levy**

Shall the Tanglewilde Parks and Recreation District be authorized to impose regular property tax levies of \$0.60 or less per thousand dollars of assessed valuation for each of six consecutive years?

- Yes
- No