

Primary Election, Sample Ballot  
Thurston County, Washington  
August 5, 2014

This sample ballot contains all candidates and measures certified to appear on the August 5, 2014 Primary Election ballot. Ballots will begin arriving on July 17, 2014.

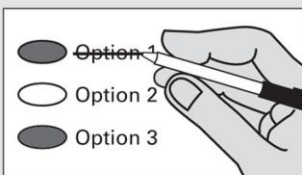
## **i** Instructions

### Marking Your Ballot



Fill in the oval to the left of your choice with a dark pen. Vote for one. If you vote for more than one, that race or measure will not be counted. To vote for a candidate not on the ballot, print the name on the dashed line and fill in the oval to the left.

### Making A Correction



If you make a mistake, draw a line through the entire candidate's name or response. To vote for another candidate or response, fill in the oval to the left of your new selection.

### Additional Information

Sign and date the voter's declaration on the return envelope.  
For a replacement ballot, contact the Thurston County Auditor's Office at (360) 786-5408.  
Deposit your ballot in a ballot drop box no later than 8:00 p.m. Election Day or mail using first class postage. It must be postmarked on or before Election Day.  
For a list of the people and organizations that donated to state and local candidates and ballot measure campaigns, visit [www.pdc.wa.gov](http://www.pdc.wa.gov).

For information about the location, hours, and services of the voting center, ballot drop boxes, and the availability of accessible voting equipment and locations call the Thurston County Auditor's Office at (360) 786-5408 or visit [ThurstonVotes.org](http://ThurstonVotes.org).

If returning your ballot by mail, first class postage (\$0.49) is required.

## Washington's Top 2 Primary Election

In each race, you may vote for any candidate listed. The two candidates who receive the most votes in the August Primary will advance to the November General Election.

Each candidate for partisan office may state a political party that he or she prefers. A candidate's preference does not imply that the candidate is nominated or endorsed by the party, or that the party approves of or associates with that candidate.

**Note:** Not all of these candidates and measures will appear on your regular ballot. Your ballot will only contain the races and measures for which you are eligible to vote. Be sure to follow all instructions on your regular ballot.

**READ:** Each candidate for partisan office may state a political party that he or she prefers. A candidate’s preference does not imply that the candidate is nominated or endorsed by the party, or that the party approves of or associates with that candidate.

Responsibilities of Elected Office

**Federal Partisan Offices**

**U. S. Representative, District No. 3**                      **Two Year Term**                      **Vote for One**

- Bob Dingethal  
(Prefers Democratic Party)
- Jaime Herrera Beutler  
(Prefers Republican Party)
- Michael Delavar  
(Prefers Republican Party)
- 

**U. S. Representative, District No. 10**                      **Two Year Term**                      **Vote for One**

- Joyce McDonald  
(Prefers Republican Party)
- Denny Heck  
(Prefers Democratic Party)
- Sam Wright  
(Prefers The Human Rights Party)
- Jennifer Gigi Ferguson  
(Prefers Independent Party)
- 

**State Legislature Partisan Offices**

**Representative, District No. 2**  
**Position No. 1**                                              **Short + Two Year Term**                      **Vote for One**

- Graham Hunt  
(Prefers Republican Party)
- Greg Hartman  
(Prefers Democratic Party)
-

**State Legislature Partisan Offices (continued)**

**Representative, District No. 2**

**Position No. 2**

**Two Year Term**

**Vote for One**

- J. T. Wilcox  
(Prefers Republican Party)
- Steven Nielson  
(Prefers Libertarian Party)
- Rick Payne  
(Prefers Marijuana Party)
- 

**Representative, District No. 20**

**Position No. 1**

**Two Year Term**

**Vote for One**

- Richard DeBolt  
(Prefers G.O.P. Party)
- Michael Savoca  
(States No Party Preference)
- 

**Representative, District No. 20**

**Position No. 2**

**Two Year Term**

**Vote for One**

- Ed Orcutt  
(Prefers Republican Party)
- John Morgan  
(Prefers Republican Party)
- 

**Representative, District No. 22**

**Position No. 1**

**Two Year Term**

**Vote for One**

- Steve Owens  
(Prefers Republican Party)
- Chris Reykdal  
(Prefers Democratic Party)
- 

**Representative, District No. 22**

**Position No. 2**

**Two Year Term**

**Vote for One**

- Sam Hunt  
(Prefers Democratic Party)
- Franklin Edwards  
(States No Party Preference)
-

**State Legislature Partisan Offices (continued)**

**Senator, District No. 35** **Four Year Term** **Vote for One**

- Irene Bowling  
(Prefers Democratic Party)
- Travis Couture  
(Prefers Republican Party)
- Tim Sheldon  
(Prefers Democratic Party)
- 

**Representative, District No. 35** **Two Year Term** **Vote for One**  
**Position No. 1**

- Kathy Haigh  
(Prefers Democratic Party)
- Dan Griffey  
(Prefers Republican Party)
- Josiah Rowell  
(Prefers Republican Party)
- 

**Representative, District No. 35** **Two Year Term** **Vote for One**  
**Position No. 2**

- Drew C. MacEwen  
(Prefers Republican Party)
- Tammey Newton  
(Prefers Democratic Party)
- 

**Thurston County Partisan Offices**

**Assessor** **Four Year Term** **Vote for One**

- Steven J. Drew  
(Prefers Democratic Party)
- Carol Person  
(Prefers Independent Party)
- 

**Auditor** **Four Year Term** **Vote for One**

- Mary Hall  
(Prefers Democratic Party)
-

**Thurston County Partisan Offices (continued)**

**Clerk** **Four Year Term** **Vote for One**

Linda Enlow  
(Prefers Democratic Party)

Yvonne L. Pettus  
(Prefers Democratic Party)

-----

**County Commissioner, District No. 3** **Four Year Term** **Vote for One**

Karen Valenzuela  
(Prefers Democratic Party)

Bud Blake  
(Prefers Independent Party)

-----

**Coroner** **Four Year Term** **Vote for One**

Gary Warnock  
(Prefers Democratic Party)

-----

**Prosecuting Attorney** **Four Year Term** **Vote for One**

Jon Tunheim  
(Prefers Democratic Party)

-----

**Sheriff** **Four Year Term** **Vote for One**

John Snaza  
(Prefers Independent Party)

-----

**Treasurer** **Four Year Term** **Vote for One**

Shawn D. Myers  
(Prefers Democratic Party)

-----

**Thurston County Nonpartisan Offices**

**Public Utility District**

**Commissioner, District No. 2**

**Two Year Unexpired Term**

**Vote for One**

- Russ Olsen
- Brian G. Hess
- Patrick A. Thomas
- 

**Public Utility District**

**Commissioner, District No. 3**

**Six Year Term**

**Vote for One**

- Chris Stearns
- Jesse Conwell
- Douglas E. Swift
- Dennis Pulsipher
- 

**Local Measures**

**Fire Protection District No. 3 (Lacey)**

**Proposition No. 1**

**Levy Lid Lift**

The Board of Fire Commissioners of Fire Protection District No. 3, Thurston County, Washington, (Lacey Fire District 3) adopted Resolution No. 838-05-14 concerning a proposition to restore the District's regular property tax levy. If approved, this proposition would restore the 2015 regular property tax levy to \$1.50/\$1,000 of assessed value and set the limit factor for calculating levy rates in 2016 through 2020 at 106%. New revenues would be used for fire protection, prevention, and emergency medical services, including maintenance, operation and replacement costs. The maximum permitted levy amount for 2020 would become the base for computing levy limits after this measure's expiration.

Should this proposition be:

- Approved
- Rejected

**Local Measures (continued)**

**West Thurston Regional Fire Authority (Rochester and Littlerock)**

**Proposition No. 1**

**Maintenance and Operations Levy**

The Board of the West Thurston Regional Fire Authority adopted Resolution No. 14-01 concerning a maintenance and operations levy. This proposition would authorize the Authority to maintain fire and emergency medical services at the level that it currently provides during 2015 and 2016, and authorizes the following excess levy for such purposes on all taxable property within the boundaries of the Authority:

| <u>Collection Year</u> | <u>Approximate Levy<br/>Rate per \$1,000<br/>of Assessed Value</u> | <u>Levy Amount</u> |
|------------------------|--------------------------------------------------------------------|--------------------|
| 2015                   | \$0.35                                                             | \$570,000          |

Should this proposition be:

- Approved
- Rejected

**Election of Political Party  
Precinct Committee Officer**

For this office only: In order to vote for precinct committee officer, a partisan office, you must affirm that you are a Democrat or a Republican and may vote only for one candidate from the party you select. Your vote for a candidate affirms your affiliation with the same party as the candidate. This preference is private and will not be matched to your name or shared.

**Precinct Committee Officer**

**Two Year Term**

**Vote for One**

- Unknown PCO – Dem  
I affirm I am a Democrat
- Unknown PCO – Dem  
I affirm I am a Democrat
- Unknown PCO – Rep  
I affirm I am a Republican
- Unknown PCO - Rep  
I affirm I am a Republican