

Sample Ballot Instructions

Revised: August 2014

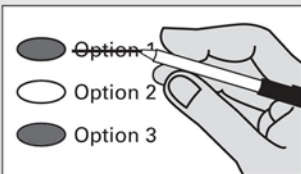
i Instructions

Marking Your Ballot



Fill in the oval to the left of your choice with a dark pen. Vote for one. If you vote for more than one, that race or measure will not be counted. To vote for a candidate not on the ballot, print the name on the dashed line and fill in the oval to the left.

Making A Correction



If you make a mistake, draw a line through the entire candidate's name or response. To vote for another candidate or response, fill in the oval to the left of your new selection.

Additional Information

Sign and date the voter's declaration on the return envelope.
For a replacement ballot, contact the Thurston County Auditor's Office at (360) 786-5408.
Deposit your ballot in a ballot drop box no later than 8:00 p.m. Election Day or mail using first class postage. It must be postmarked on or before Election Day.
For a list of the people and organizations that donated to state and local candidates and ballot measure campaigns, visit www.pdc.wa.gov.

For information about the location, hours, and services of the voting center, ballot drop boxes, and the availability of accessible voting equipment and locations call the Thurston County Auditor's Office at (360) 786-5408 or visit ThurstonVotes.org.

If returning your ballot by mail, first class postage (\$0.49) is required.

Washington's General Election

If a Primary Election was held for an office, the two candidates who received the most votes in the August Primary advanced to the November General election.

Each candidate for partisan office may state a political party that he or she prefers. A candidate's preference does not imply that the candidate is nominated or endorsed by the party, or that the party approves of or associates with that candidate.

Note: Not all of these candidates and measures will appear on your regular ballot. Your ballot will only contain the races and measures for which you are eligible to vote. Be sure to follow all instructions on your regular ballot.

Initiatives to the People

Initiative Measure No. 1351

Initiative Measure No. 1351 concerns K-12 education. This measure would direct the legislature to allocate funds to reduce class sizes and increase staffing support for students in all K-12 grades, with additional class-size reductions and staffing increases in high-poverty schools.

Should this measure be enacted into law?

- Yes
- No

Initiatives to the Legislature

Initiative Measure No. 591

Initiative Measure No. 591 concerns firearms. This measure would prohibit government agencies from confiscating guns or other firearms from citizens without due process, or from requiring background checks on firearm recipients unless a uniform national standard is required.

Should this measure be enacted into law?

- Yes
- No

Initiative Measure No. 594

Initiative Measure No. 594 concerns background checks for firearm sales and transfers. This measure would apply currently used criminal and public safety background checks by licensed dealers to all firearm sales and transfers, including gun show and online sales, with specific exceptions.

Should this measure be enacted into law?

- Yes
- No

Advisory Votes

**Advisory Vote No. 8
Senate Bill 6505**

The legislature eliminated, without a vote of the people, agricultural excise tax preferences for various aspects of the marijuana industry, costing an estimated \$24,903,000 in the first ten years, for government spending. This tax increase should be:

- Repealed
- Maintained

**Advisory Vote No. 9
Engrossed Substitute House Bill 1287**

The legislature imposed, without a vote of the people, the leasehold excise tax on certain leasehold interests in tribal property, costing an estimated \$1,298,000 in the first ten years, for government spending. This tax increase should be:

- Repealed
- Maintained

READ: Each candidate for partisan office may state a political party that he or she prefers. A candidate's preference does not imply that the candidate is nominated or endorsed by the party, or that the party approves of or associates with that candidate.

Federal Partisan Offices

U. S. Representative, District No. 3

Two Year Term

Vote for One

- Jaime Herrera Beutler
(Prefers Republican Party)
- Bob Dingethal
(Prefers Democratic Party)
-

U. S. Representative, District No. 10

Two Year Term

Vote for One

- Denny Heck
(Prefers Democratic Party)
- Joyce McDonald
(Prefers Republican Party)
-

State Legislature Partisan Offices

Representative, District No. 2

Position No. 1

Short + Two Year Term

Vote for One

- Graham Hunt
(Prefers Republican Party)
- Greg Hartman
(Prefers Democratic Party)
-

Representative, District No. 2

Position No. 2

Two Year Term

Vote for One

- J. T. Wilcox
(Prefers Republican Party)
- Steven Nielson
(Prefers Libertarian Party)
-

Representative, District No. 20

Position No. 1

Two Year Term

Vote for One

- Richard DeBolt
(Prefers G.O.P. Party)
- Michael Savoca
(States No Party Preference)
-

Representative, District No. 20

Position No. 2

Two Year Term

Vote for One

- Ed Orcutt
(Prefers Republican Party)
- John Morgan
(Prefers Republican Party)
-

Representative, District No. 22

Position No. 1

Two Year Term

Vote for One

- Chris Reykdal
(Prefers Democratic Party)
- Steve Owens
(Prefers Republican Party)
-

State Legislature Partisan Offices (continued)

**Representative, District No. 22
Position No. 2**

Two Year Term

Vote for One

- Sam Hunt
(Prefers Democratic Party)
- Franklin Edwards
(States No Party Preference)
-

Senator, District No. 35

Four Year Term

Vote for One

- Irene Bowling
(Prefers Democratic Party)
- Tim Sheldon
(Prefers Democratic Party)
-

**Representative, District No. 35
Position No. 1**

Two Year Term

Vote for One

- Kathy Haigh
(Prefers Democratic Party)
- Dan Griffey
(Prefers Republican Party)
-

**Representative, District No. 35
Position No. 2**

Two Year Term

Vote for One

- Drew C. MacEwen
(Prefers Republican Party)
- Tammey Newton
(Prefers Democratic Party)
-

Thurston County Partisan Offices

Assessor

Four Year Term

Vote for One

- Steven J. Drew
(Prefers Democratic Party)
- Carol Person
(Prefers Independent Party)
-

Thurston County Partisan Offices (continued)

Auditor **Four Year Term** **Vote for One**

Mary Hall
(Prefers Democratic Party)

Clerk **Four Year Term** **Vote for One**

Linda Enlow
(Prefers Democratic Party)

Yvonne L. Pettus
(Prefers Democratic Party)

County Commissioner, District No. 3 **Four Year Term** **Vote for One**

Karen Valenzuela
(Prefers Democratic Party)

Bud Blake
(Prefers Independent Party)

Coroner **Four Year Term** **Vote for One**

Gary Warnock
(Prefers Democratic Party)

Prosecuting Attorney **Four Year Term** **Vote for One**

Jon Tunheim
(Prefers Democratic Party)

Sheriff **Four Year Term** **Vote for One**

John Snaza
(Prefers Independent Party)

Treasurer **Four Year Term** **Vote for One**

Shawn D. Myers
(Prefers Democratic Party)

State Judicial Nonpartisan Offices

Supreme Court Justice, Position No. 1 **Two Year Unexpired Term** **Vote for One**

- Mary Yu
-

Supreme Court Justice, Position No. 3 **Six Year Term** **Vote for One**

- Mary E. Fairhurst
-

Supreme Court Justice, Position No. 4 **Six Year Term** **Vote for One**

- Eddie Yoon
- Charles W. Johnson
-

Supreme Court Justice, Position No. 7 **Six Year Term** **Vote for One**

- Debra L. Stephens
- John (Zamboni) Scannell
-

**Court of Appeals, Division No. 2,
District No. 2, Judge Position No. 1** **Six Year Term** **Vote for One**

- Lisa L. Sutton
-

Thurston County Judicial Nonpartisan Offices

District Court Judge, Position No. 1 **Four Year Term** **Vote for One**

- Kalo Wilcox
-

District Court Judge, Position No. 2 **Four Year Term** **Vote for One**

- Sam Meyer
-

District Court Judge, Position No. 3 **Four Year Term** **Vote for One**

- Brett Buckley
-

Thurston County Nonpartisan Offices

Public Utility District

Commissioner, District No. 2

Two Year Unexpired Term

Vote for One

- Russ Olsen
- Brian G. Hess
-

Public Utility District

Commissioner, District No. 3

Six Year Term

Vote for One

- Chris Stearns
- Dennis Pulsipher
-

Local Measures

**Fire Protection District No. 7 (North Olympia)
 Proposition No. 1
 Merger of Fire District No. 7 (North Olympia)
 into Fire District No. 8 (South Bay)**

The Board of Fire Commissioners of the Thurston County Fire Protection District No. 7 adopted Resolution No. 2014-07-08-01 concerning a proposition relating to a merger between two fire districts. If approved, this proposition would authorize Thurston County Fire District No. 7 to be merged with Thurston County Fire District No. 8.

Should this proposition be:

- Approved
- Rejected

**Fire Protection District No. 7 (North Olympia)
 Proposition No. 2
 Levy Lid Lift**

The Board of Fire Commissioners of the Thurston County Fire Protection District No. 7 adopted Resolution No. 2014-07-08-02 concerning a proposition relating to the District’s regular property tax levy. The proposition would authorize an increase in regular property tax levies in 2015 for fire protection and emergency medical services. The proposition would authorize the District to levy property tax in an amount not to exceed \$1.50 per \$1,000 of assessed valuation for collection in 2015, notwithstanding statutory 1% limitations on annual increases in property tax revenues. The 2015 levy limit will be used to calculate future levy limits as provided by chapter 84.55 RCW.

Should this proposition be:

- Approved
- Rejected