

DATA SNAPSHOT

THURSTON THRIVES EDUCATION ACTION TEAM



Thurston County Public Health & Social Services Department
February 2014



TABLE OF CONTENTS

Introduction	2
Educational Attainment	3-7
High School Graduation	
Dropping Out	
Not in School or Working	
Meeting Standard	
Map Gallery	8-20
On-Time High School Graduation	
Adults with High School Education or Less	
Dropping Out of High School	
Going to College	
4 th Grade Meeting Standard	
7 th Grade Meeting Standard	
Public School Students	
Private School Students	
Homeschooled Students	
Homeless Students	
Special Education/Section 504 Students	
Free and Reduced Meal Program Students	
Citations	21

INTRODUCTION

Thurston Thrives is a community initiative focusing on how healthy people are today and the *factors* that influence how healthy the community will be in the future. These factors are: health behavior, the physical and built environment, health services, and local social and economic conditions. Together, these factors directly impact how long local residents live and the quality of life they experience during their lifetime.



Thurston Thrives was established by the Thurston County Board of Health and is overseen with assistance of the Thurston Thrives Advisory Council. Topics that research has shown significantly influence community health are reviewed with the help of action teams. Each action team is led by a community member with in-depth knowledge of the topic area. The action teams are empowered to develop a common agenda on how best to address their topic area locally and are asked to report their recommendations to the Board of Health and Thurston Thrives Advisory Council.

EDUCATION AND HEALTH

In 2013, the Thurston Thrives Education Action Team was formed to review the topic of education and its connection to health. **Mike Hickman, Assistant Superintendent at Educational Service District 113** serves as the Education Action Team lead.

SNAPSHOT

The purpose of this report is to provide support to those examining the connections between education and health.

- ◆ Data in this report provides a current snapshot of community health issues associated with educational attainment. A selected set of measures related to the topic are presented.
- ◆ Other local community data reports and plans with additional information about this topic may be available and are not integrated into the snapshot.

QUESTIONS

If you have questions about:

- ◆ The Thurston Thrives initiative contact Chris Hawkins, Coordinator, 360-867-2513, hawkincc@co.thurston.wa.us
- ◆ The Snapshot Report contact Mary Ann O'Garro, Epidemiologist, 360-867-2525, ogarrom@co.thurston.wa.us

EDUCATIONAL ATTAINMENT

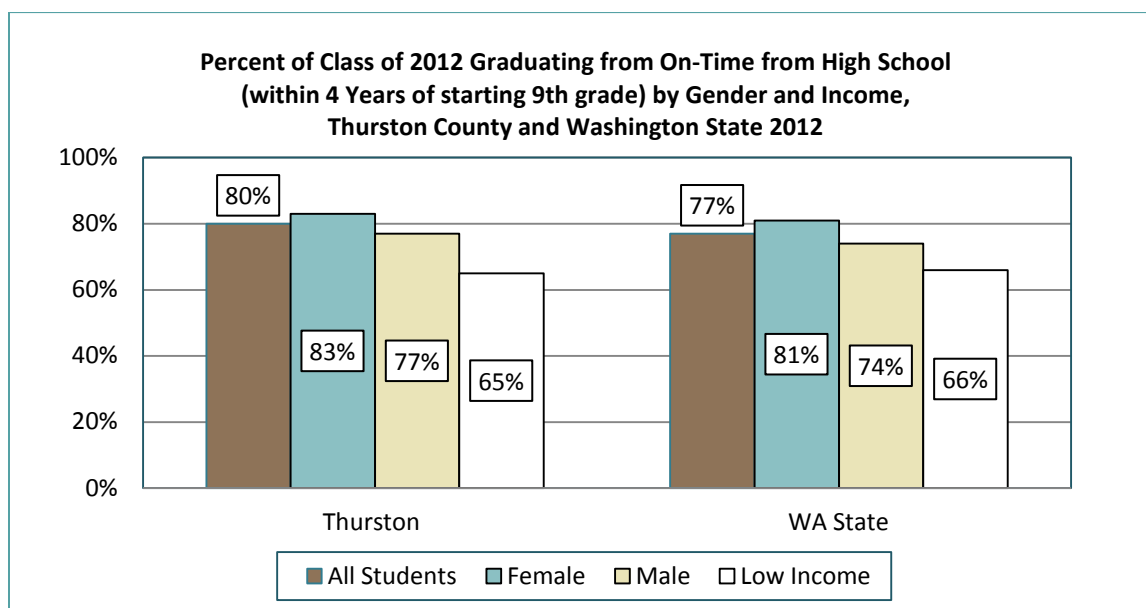
Education is a powerful predictor of health and well-being across the life span.



HIGH SCHOOL GRADUATION.

Education is one of the strongest predictors of health. In fact, it is so important that improving the on-time high school graduation rate is considered a leading indicator of the nation's health. High school graduation impacts opportunities for employment and income, both of which connect to better health. The type of job someone is qualified to do impacts their work conditions and employment-related benefits like health insurance and sick leave. The amount of income earned from work influences health as this establishes the resources available for safe housing, nutritious food and money to cover expenses like medication. Research shows that education has unique psychological benefits including increasing the sense of control people feel they have over their lives, confidence and sense of purpose. (1-3)

MEASURE: Percent of county youth graduating on-time from high school.



Data Source: Office of Superintendent of Public Instruction (4)

Note: Based on the adjusted four-year cohort graduation rate for youth starting 9th grade in 2008-2009 and who were expected to graduate in 2011-2012.

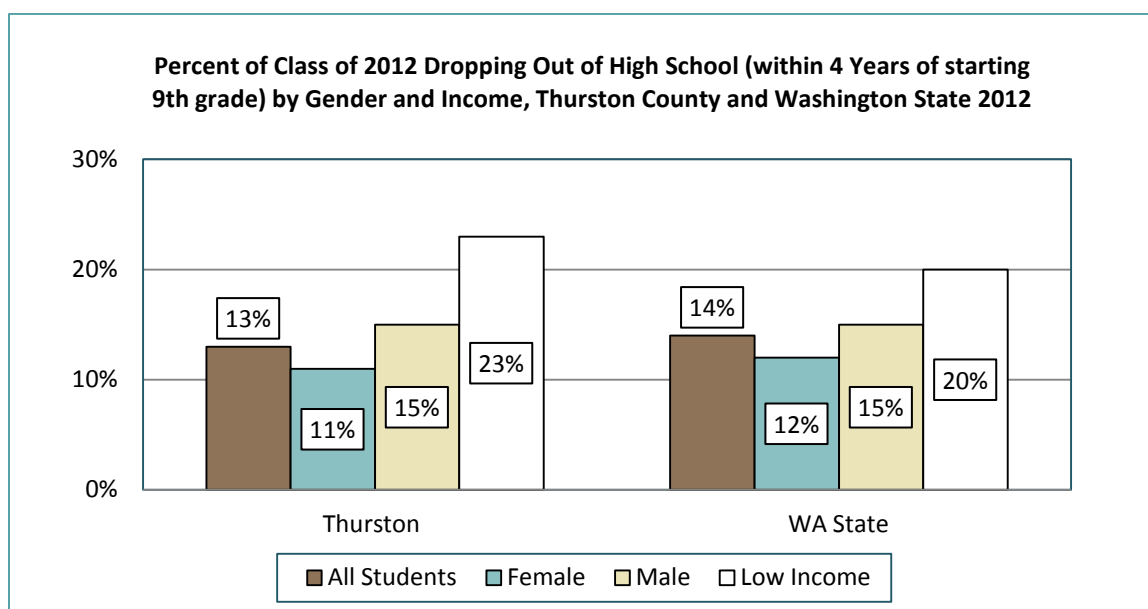
WHAT WE KNOW.

- ◆ In Thurston County, 80% of the Class of 2012 graduated on-time from high school compared to 77% for Washington State. On-time graduation means students graduated from high school within 4 years of starting 9th grade.
 - The national goal for on-time graduation is 82%.
- ◆ Thurston County has the 10th highest on-time high school graduation rate compared to all 39 Washington State counties (based on Class of 2012 data).
 - A total of 2,407 Thurston County Class of 2012 students graduated high school on-time.

DROPPING OUT.

Graduating from high school has lifelong health implications with the more years of education someone has equating to better health as an adult. How healthy children are can impact how far they get in school and whether they drop out. Certain types of health issues have been found to increase risk for dropping out of school before graduation including: having a chronic health condition, mental health issues and behaviors that disrupt school performance such as substance use. There are many other factors connected to risk for dropping out of school such as academic problems in early grades, moving frequently and feeling disconnected from school. (3, 5)

MEASURE: Percent of county youth dropping out of high school before graduating.



Data Source: Office of Superintendent of Public Instruction (4)

Note: Based on the adjusted four-year cohort dropout rate for youth starting 9th grade in 2008-2009 and who were expected to graduate in 2011-2012.

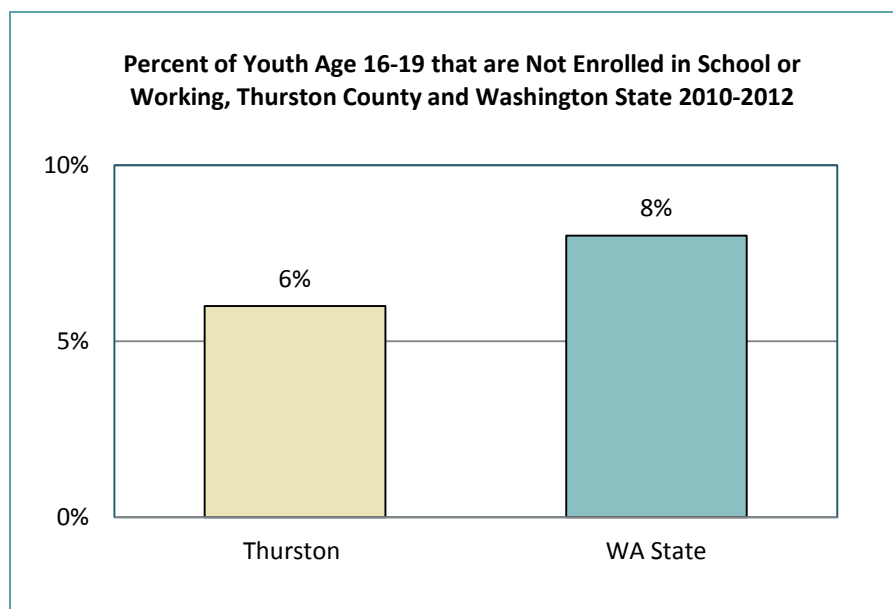
WHAT WE KNOW.

- ◆ In Thurston County, 13% of the Class of 2012 dropped out of high school before graduating compared to 14% for Washington State.
- ◆ Thurston County has the 18th lowest high school dropout rate compared to all 39 Washington State counties (based on Class of 2012 data).
 - A total of 389 Thurston County Class of 2012 students dropped out of high school before graduating.

NOT IN SCHOOL OR WORKING.

Adolescence is a time of transition. Youth rapidly move from education and social systems designed to support children to an adult world where they are expected to move toward financial independence through higher education or employment. Adolescents who are not enrolled in school or working may be disconnected from pathways that will help them successfully transition to adulthood. Research has found that disconnected youth are less likely to have a GED or high school diploma and more likely to be living away from their parents and in poverty. Being connected to a good school and having educational aspirations helps reduce risk for justice involvement. (6-8)

MEASURE: Percent of county youth age 16-19 who are not in school or working.



Data Source: American Community Survey (9)

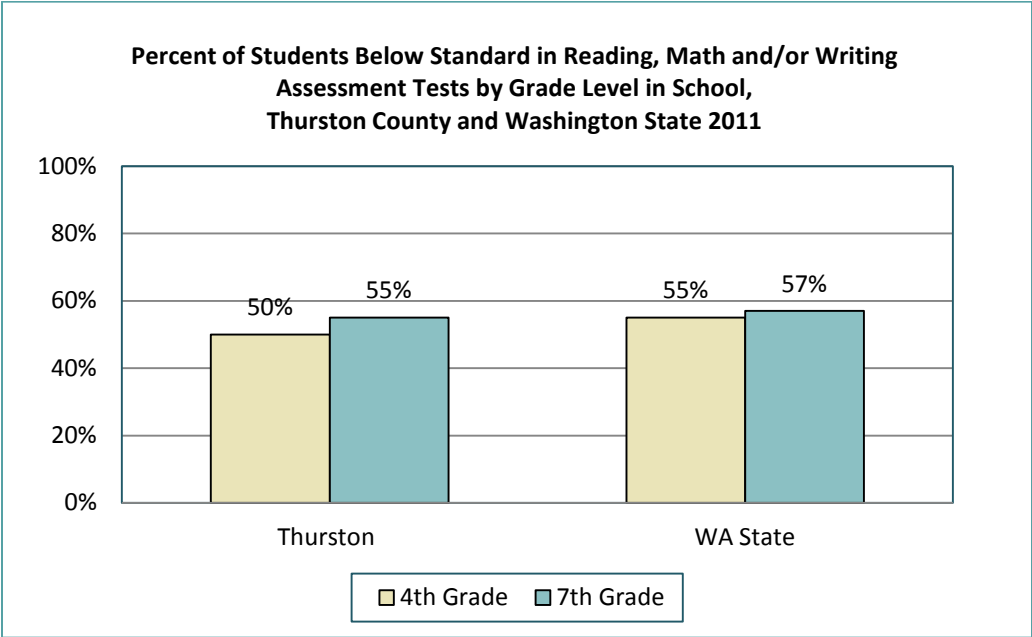
WHAT WE KNOW.

- ◆ In Thurston County, an estimated 6% of all youth age 16-19 are not enrolled in school or working compared to 8% of Washington State youth (based on 2010-2012 data).
 - This equates to about 840 Thurston County adolescents who are not engaged in education or employment.

MEETING STANDARD.

Academically performing at the standard expected for your grade level is important for successful progression in school. Progress of students is monitored in many ways in the classroom and within schools. In Washington State, public school students also participate in an annual statewide standardized testing process called the Measurement of Student Progress (MSP) which is used to determine whether elementary and middle students are meeting grade level expectations in key subject areas. Children in grades 4 and 7 are tested in the fundamental subject areas of reading, math and writing. The ability to read impacts a wide range of learning experiences and has been shown to connect likelihood of graduating high school. Math is fundamental for daily life and is increasingly important for a wide range of career fields. Writing skills are fundamental to success in school and employment later in life. Poor academic performance during childhood increases the risk for many health related concerns, one of which is substance use. (10-12)

MEASURE: Percent of students below standard in reading, math and/or writing.



Data Source: Washington State Department of Social and Health Services, Research and Data Analysis Division (13)
Below standard = not meeting or exceeding the Measurement of Student Progress (MSP) standard score for proficiency in the subject area

WHAT WE KNOW.

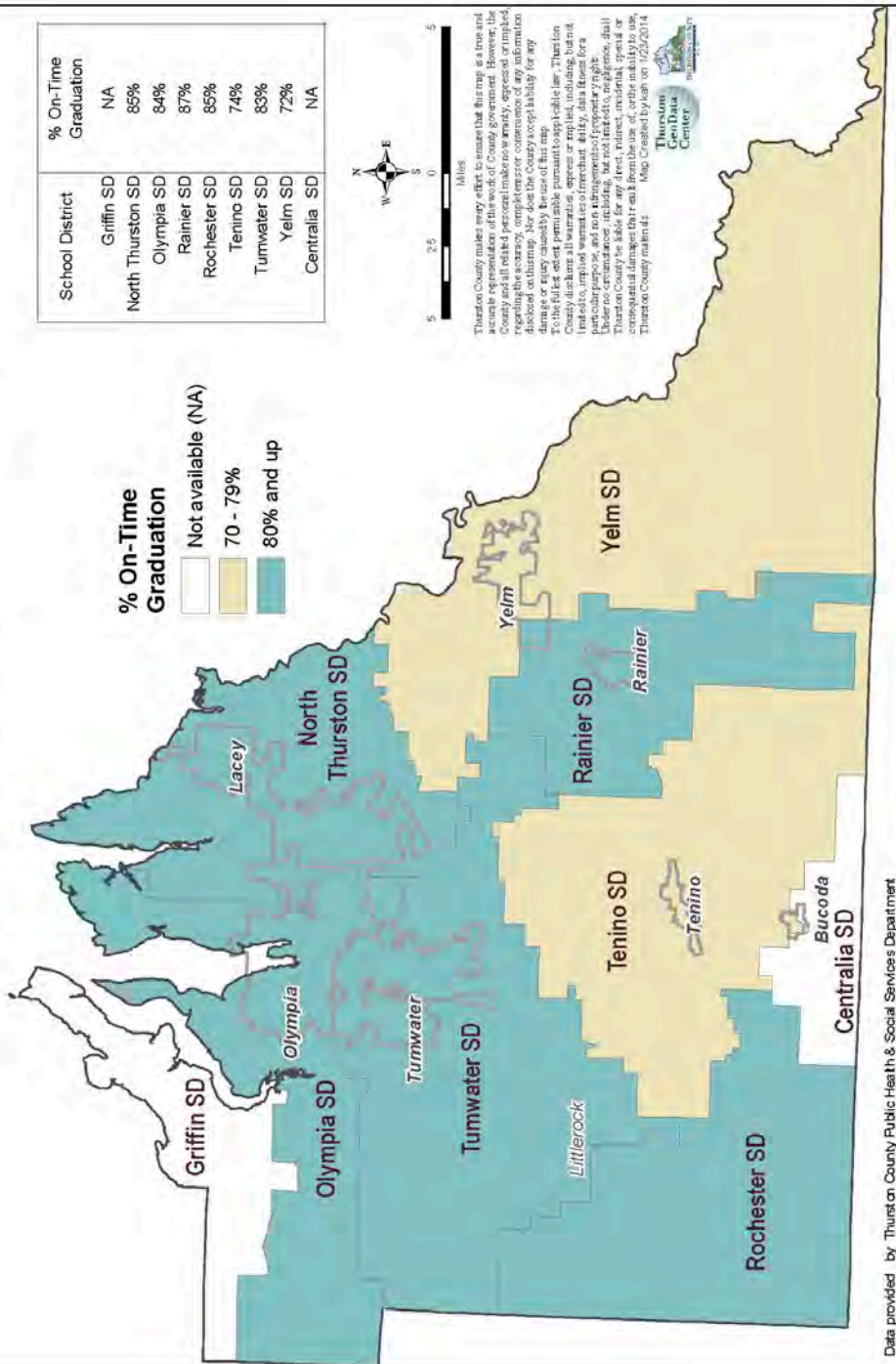
- ◆ In Thurston County, half of all 4th and 7th grade students are not meeting grade level standards in one or more of these fundamental subject areas – reading, math or writing (based on 2011 data).

MAP GALLERY

Health in detail.



Percent of Class of 2012 Students Graduating On-Time from High School by School District, Thurston County

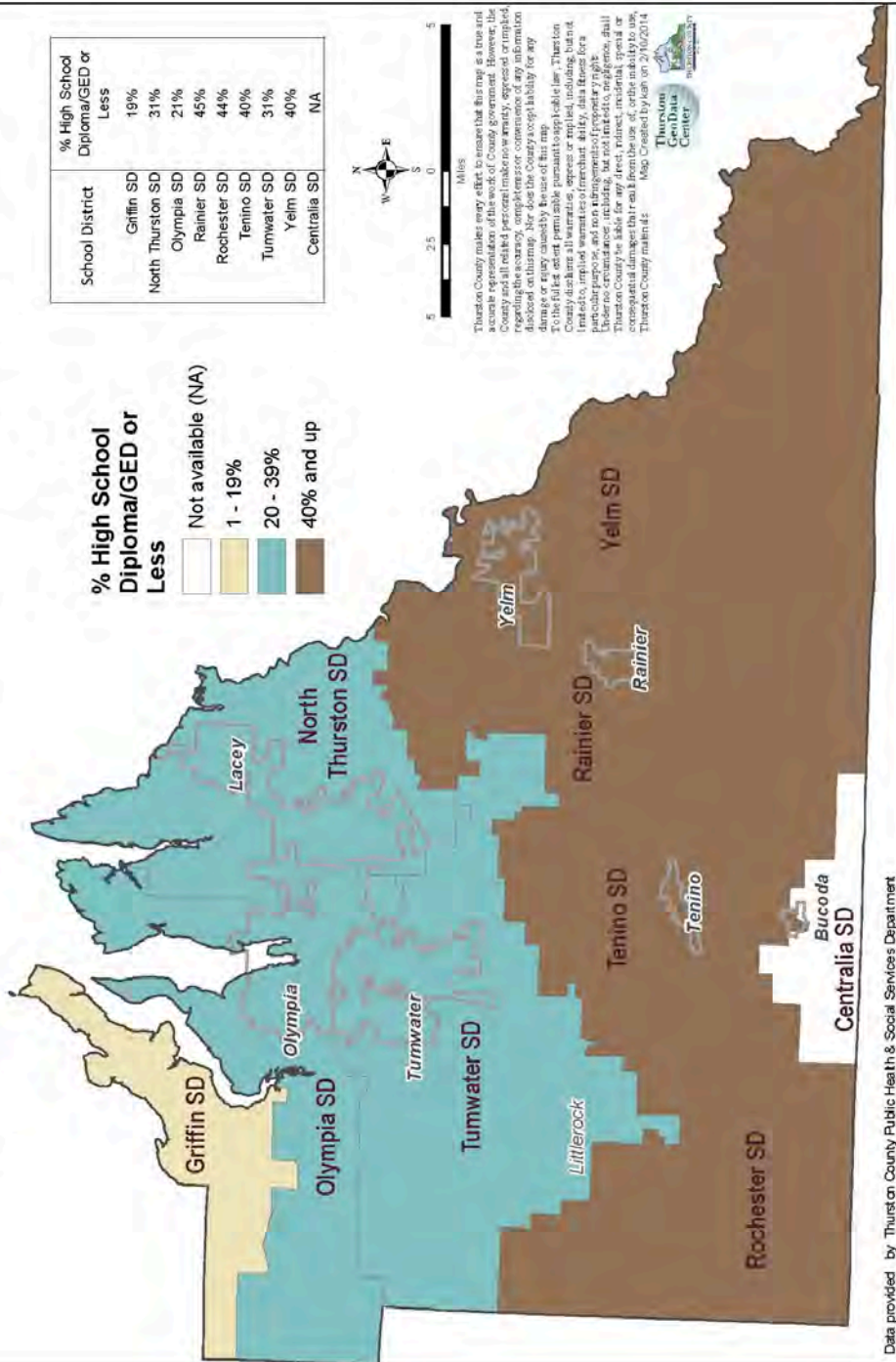


% of Class of 2012 Graduating On-Time from High School (within 4 years of starting 9th grade)
 Thurston County = 80%, Washington State = 77%

Data Source: Office of Superintendent of Public Instruction

Note: The Class of 2012 began 9th grade in 2008-2009 and were expected to graduate in 2011-2012

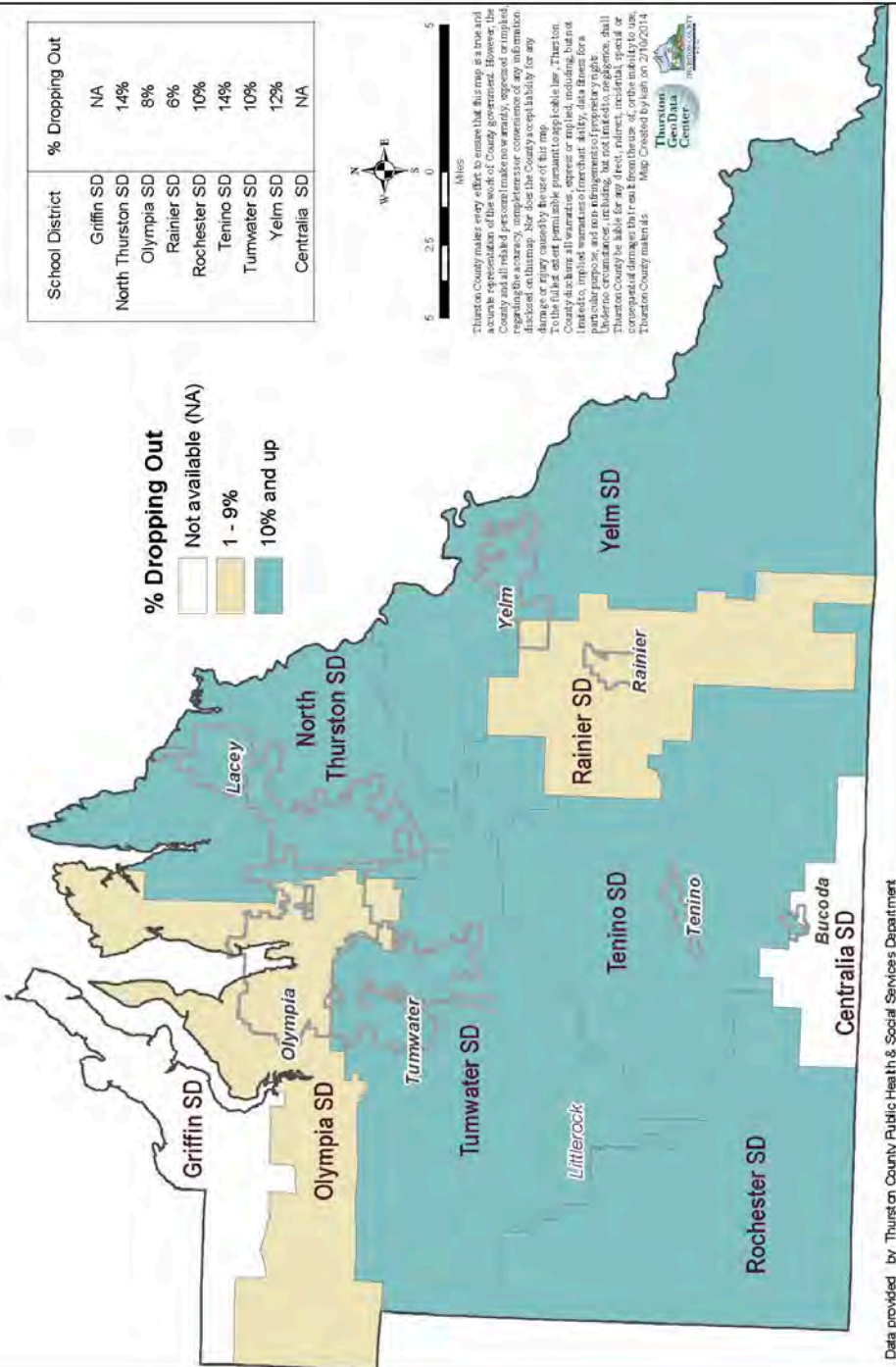
Percent of Adults Age 25 and Up with a High School Education or Less by School District Boundary, Thurston County 2008-2012



% of Adults Age 25 and Up with a High School Education or Less, 2008-2012
 Thurston County = 30%, Washington State = 34%

Data Source: U.S. Census Bureau, American Community Survey

Percent of Class of 2012 Students Dropping Out of High School by School District, Thurston County

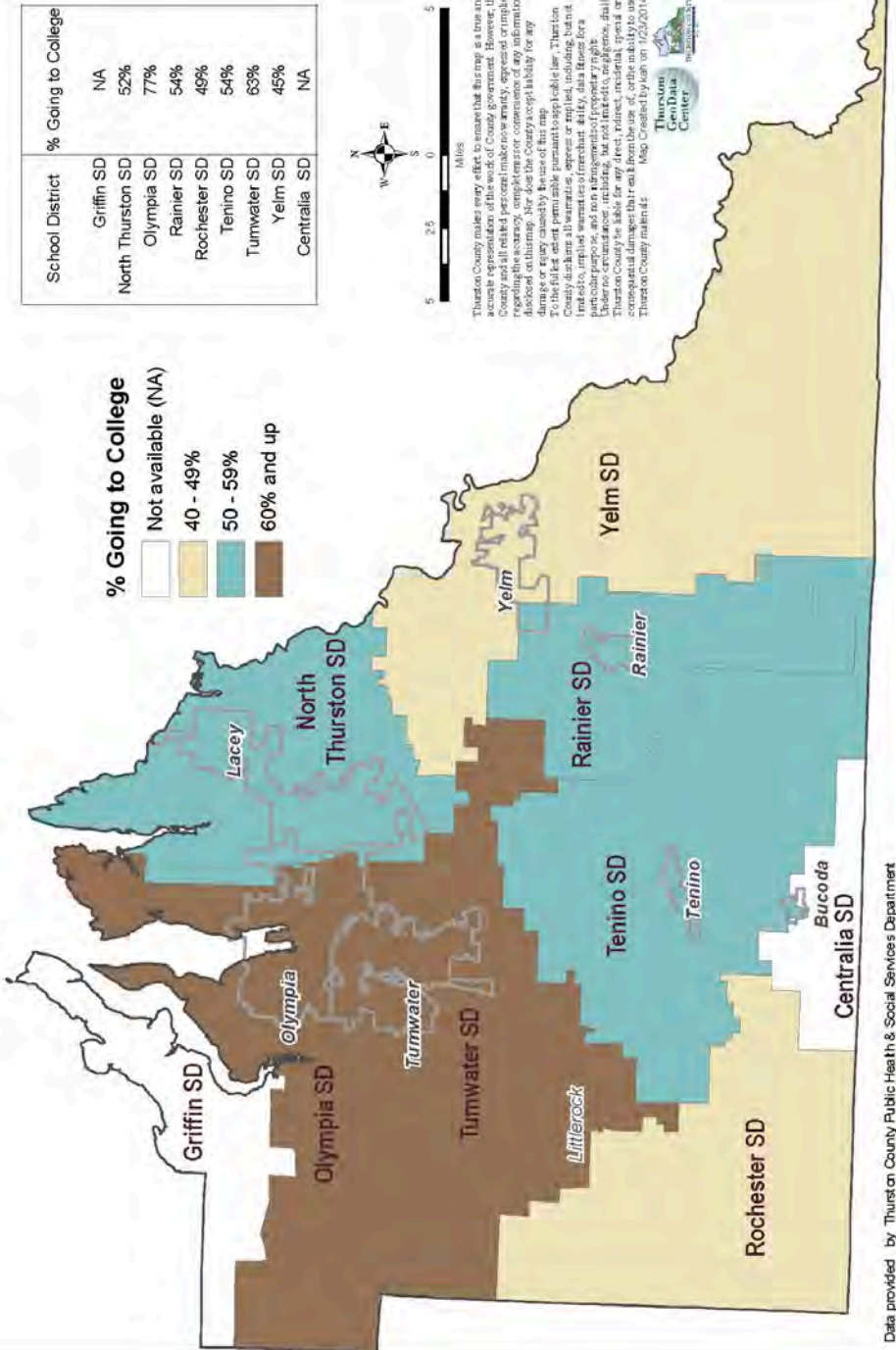


% of Class of 2012 Dropping Out of High School before Graduation
Thurston County = 13%, Washington State = 14%

Data Source: Office of Superintendent of Public Instruction

Note: The Class of 2012 began 9th grade in 2008-2009 and were expected to graduate in 2011-2012

Percent of High School Students Going to College upon Graduation by School District, Thurston County 2012



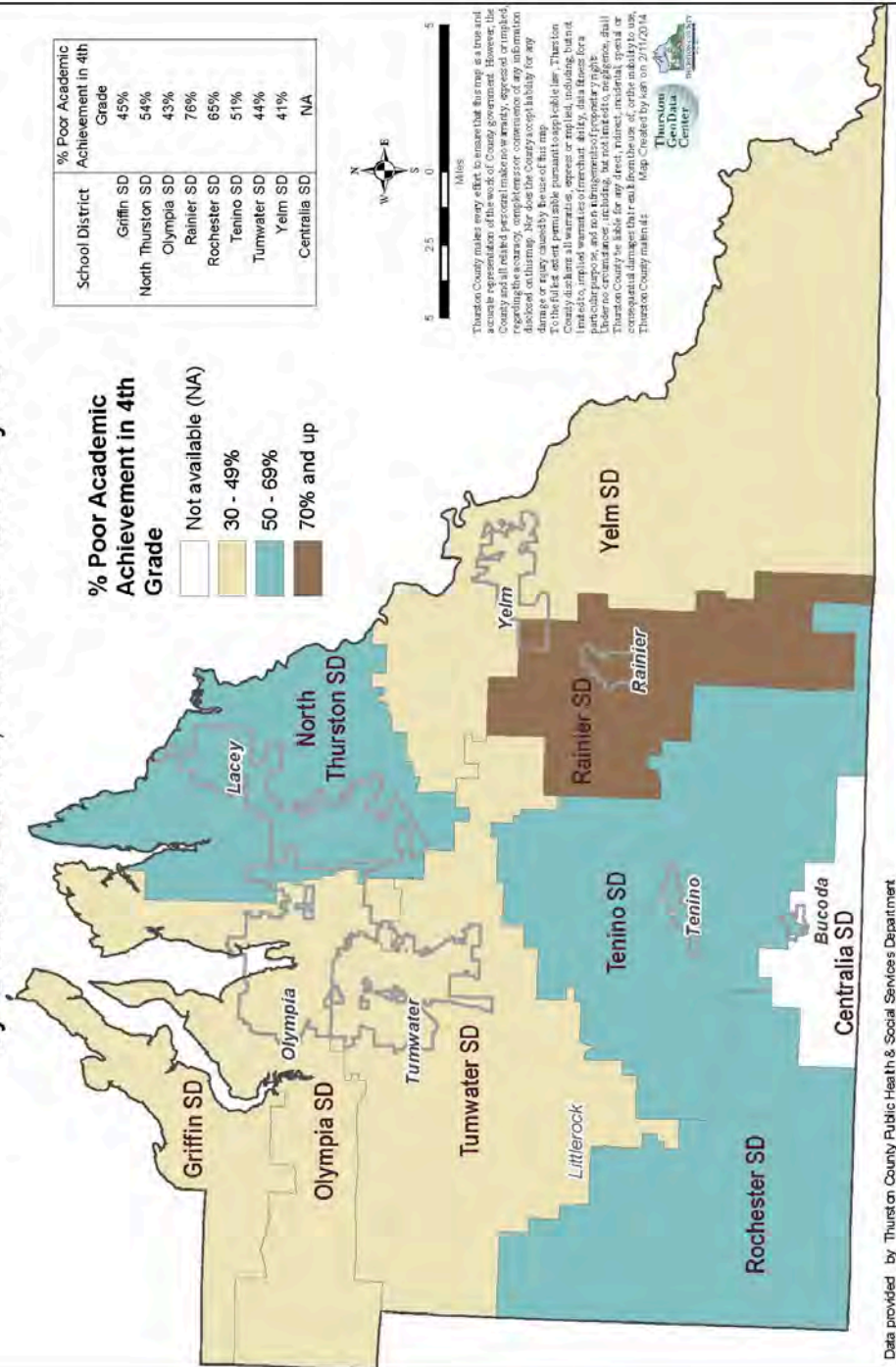
% of High School Graduates Going to College, 2012
Thurston County = 60%, Washington State = 60%

Data Source: Washington State Education Research and Data Center

Note: Going to college includes any post-secondary education (4 year or 2 year, private or public school, in state or out)

Griffin School District students go to high school in the Olympia School District

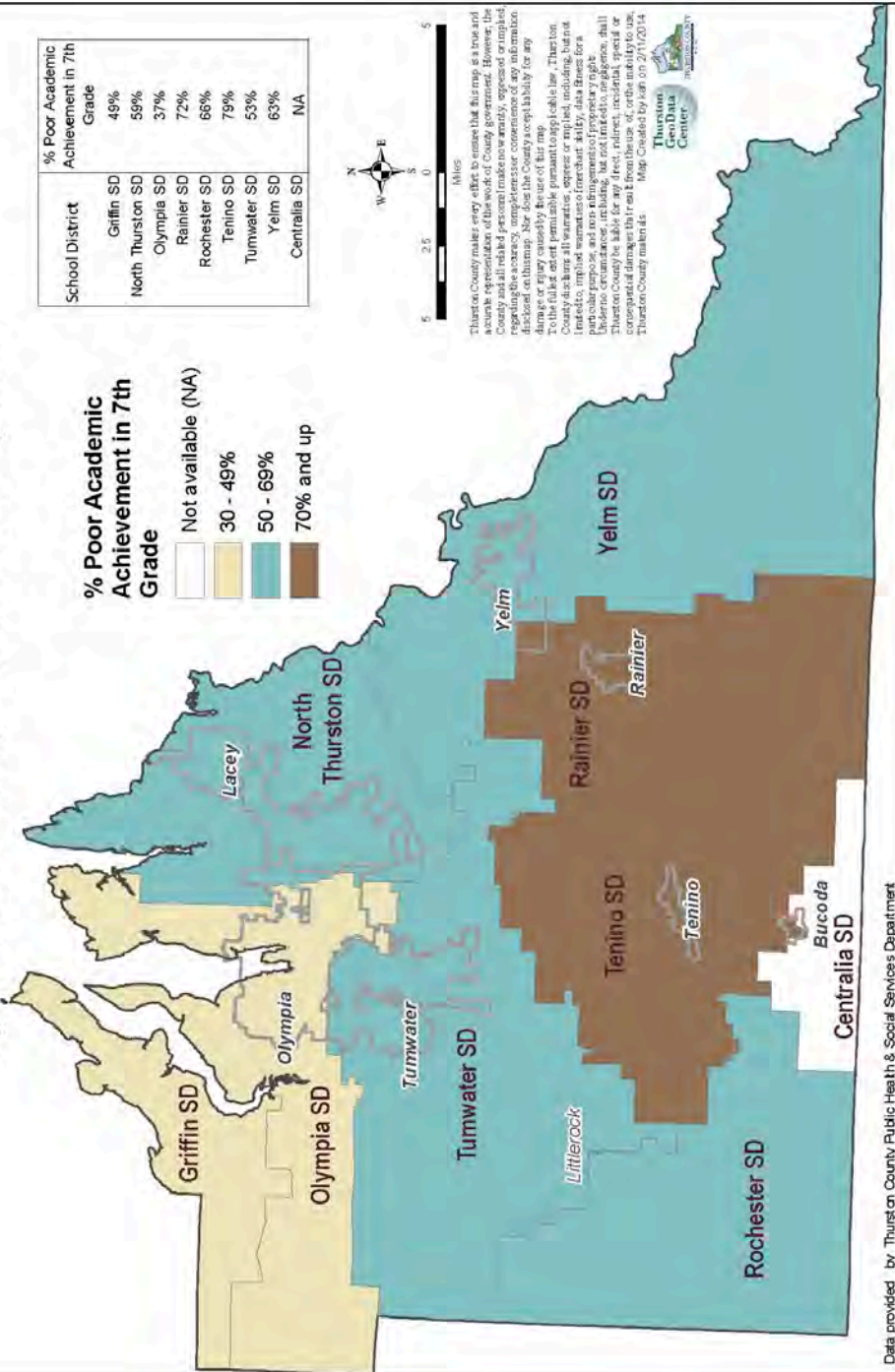
Percent of 4th Grade Students Below Standard on Reading, Math and/or Writing Assessment Tests by School District, Thurston County 2011



% of 4th Grade Students Below Standard on One or More State Assessment Tests
(Reading, Math and/or Writing), 2011
Thurston County = 50%, Washington State = 55%

Data Source: Washington State Department of Social and Health Services, Research and Data Analysis Division
Below standard = not meeting or exceeding the Measurement of Student Progress (MSP)
standard score for proficiency in the subject area

Percent of 7th Grade Students Below Standard on Reading, Math and/or Writing Assessment Tests by School District, Thurston County 2011



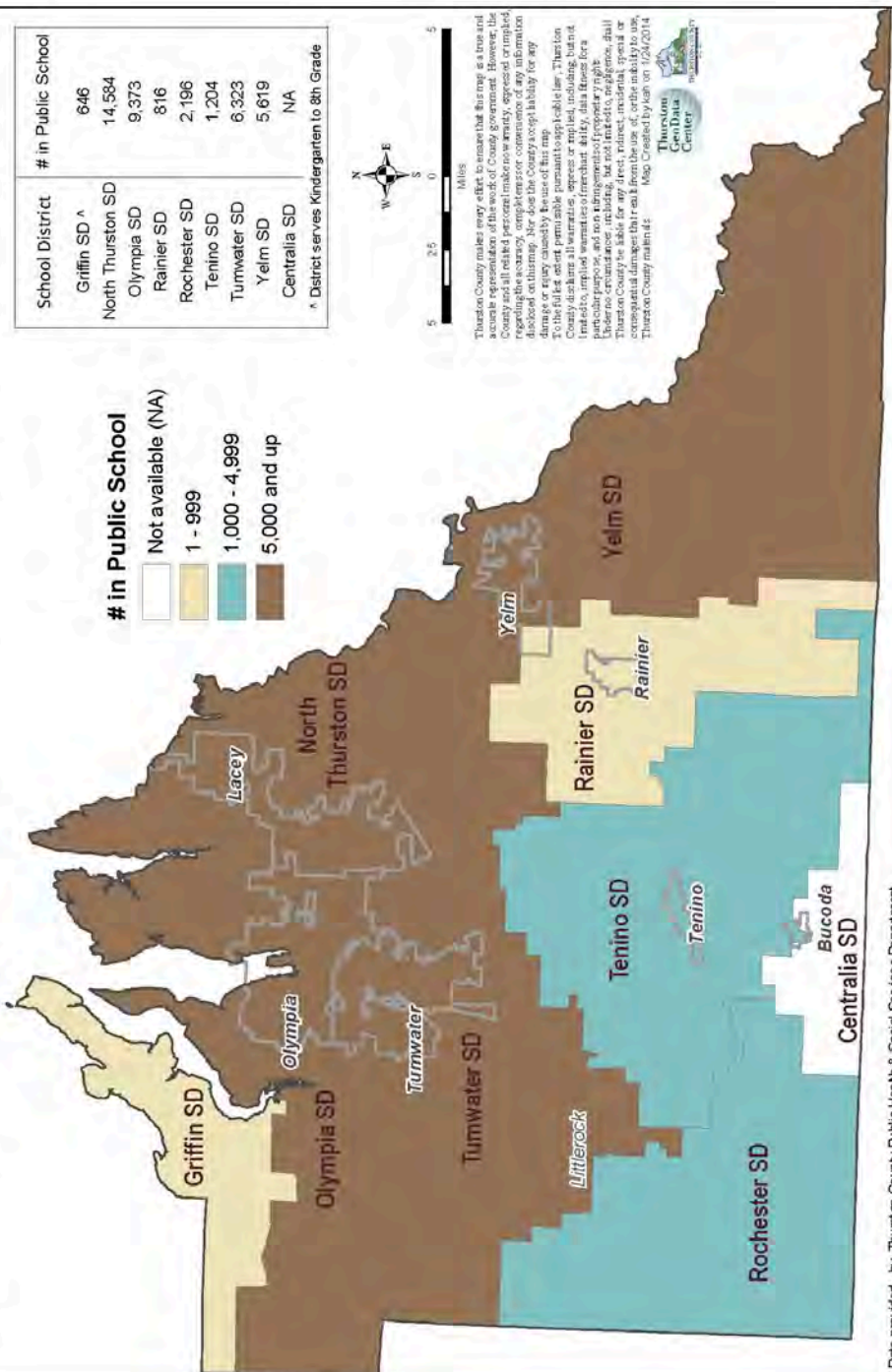
% of 7th Grade Students Below Standard on One or More State Assessment Tests
 (Reading, Math and/or Writing), 2011
 Thurston County = 55%, Washington State = 57%

Data Source: Washington State Department of Social and Health Services, Research and Data Analysis Division
 Below standard = not meeting or exceeding the Measurement of Student Progress (MSP)
 standard score for proficiency in the subject area

Number of Children Enrolled in Public Kindergarten to 12th Grade by School District Boundary, Thurston County 2013-2014 School Year

School District	# in Public School
Griffin SD ^	646
North Thurston SD	14,584
Olympia SD	9,373
Rainier SD	816
Rochester SD	2,196
Tenino SD	1,204
Turnwater SD	6,323
Yelm SD	5,619
Centralia SD	NA

^ District serves Kindergarten to 8th Grade



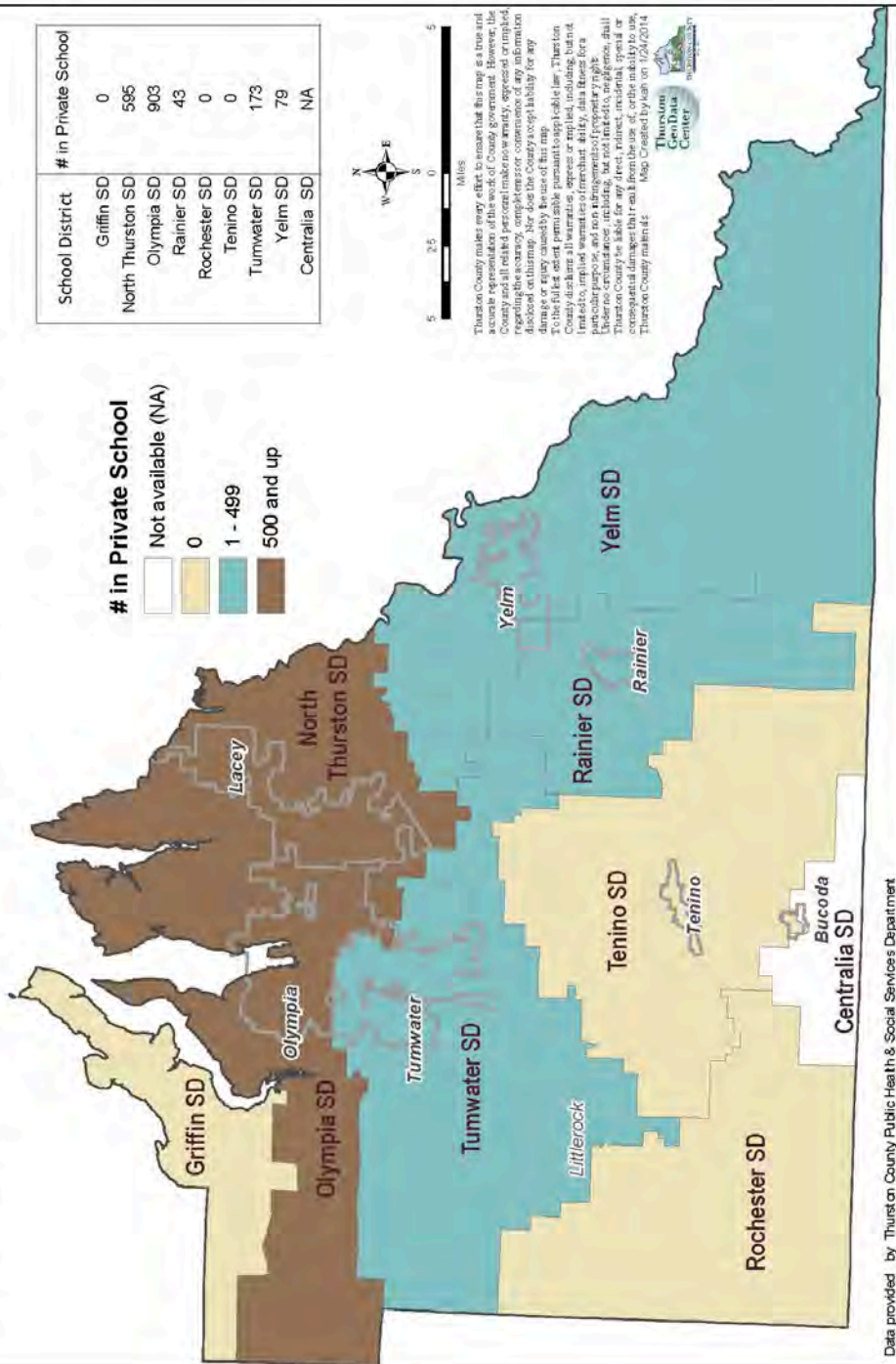
Thurston County makes every effort to ensure that this map is a true and accurate representation of the work of County government. However, the County and all related personnel make no warranty, expressed or implied, regarding the accuracy, completeness or correctness of any information disclosed on this map. Nor does the County accept liability for any errors or omissions that may appear on this map. This map is provided for informational purposes only. It is not intended to be used for legal purposes, and no attorney should be consulted for any legal advice. The County is not responsible for any damages, including consequential damages that result from the use of, or the inability to use, this map. Map Created by: klan on 1/24/2014

Data provided by Thurston County Public Health & Social Services Department

of Public School Students Enrolled in Kindergarten-12th Grade in 2013-2014 School Year
Thurston County = 40,985

Data Source: Office of Superintendent of Public Instruction

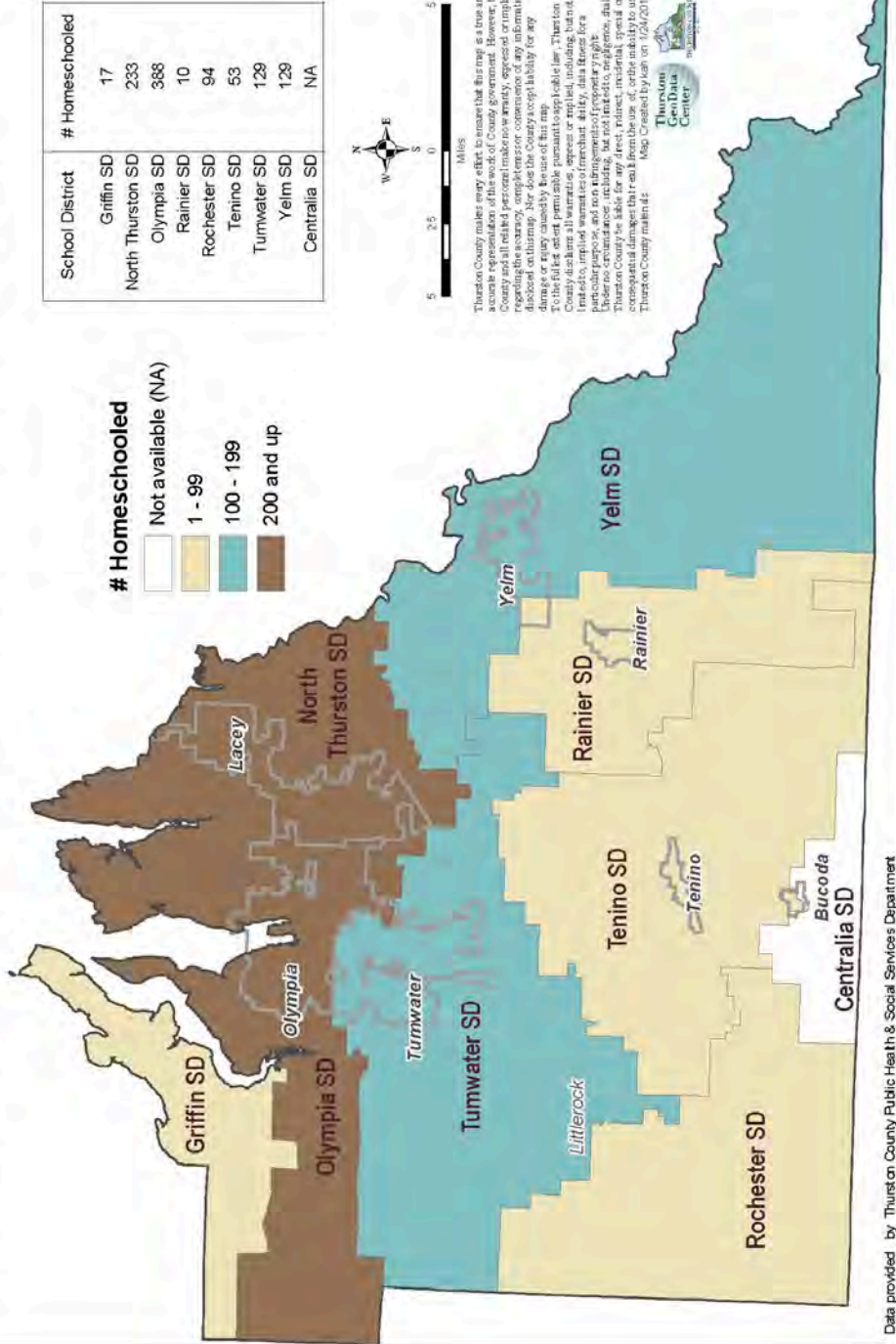
Number of Children Enrolled in Private Kindergarten to 12th Grade by School District Boundary, Thurston County 2013-2014 School Year



of Private School Students Enrolled in Kindergarten-12th Grade in 2013-2014 School Year
Thurston County = 1,793

Data Source: Office of Superintendent of Public Instruction

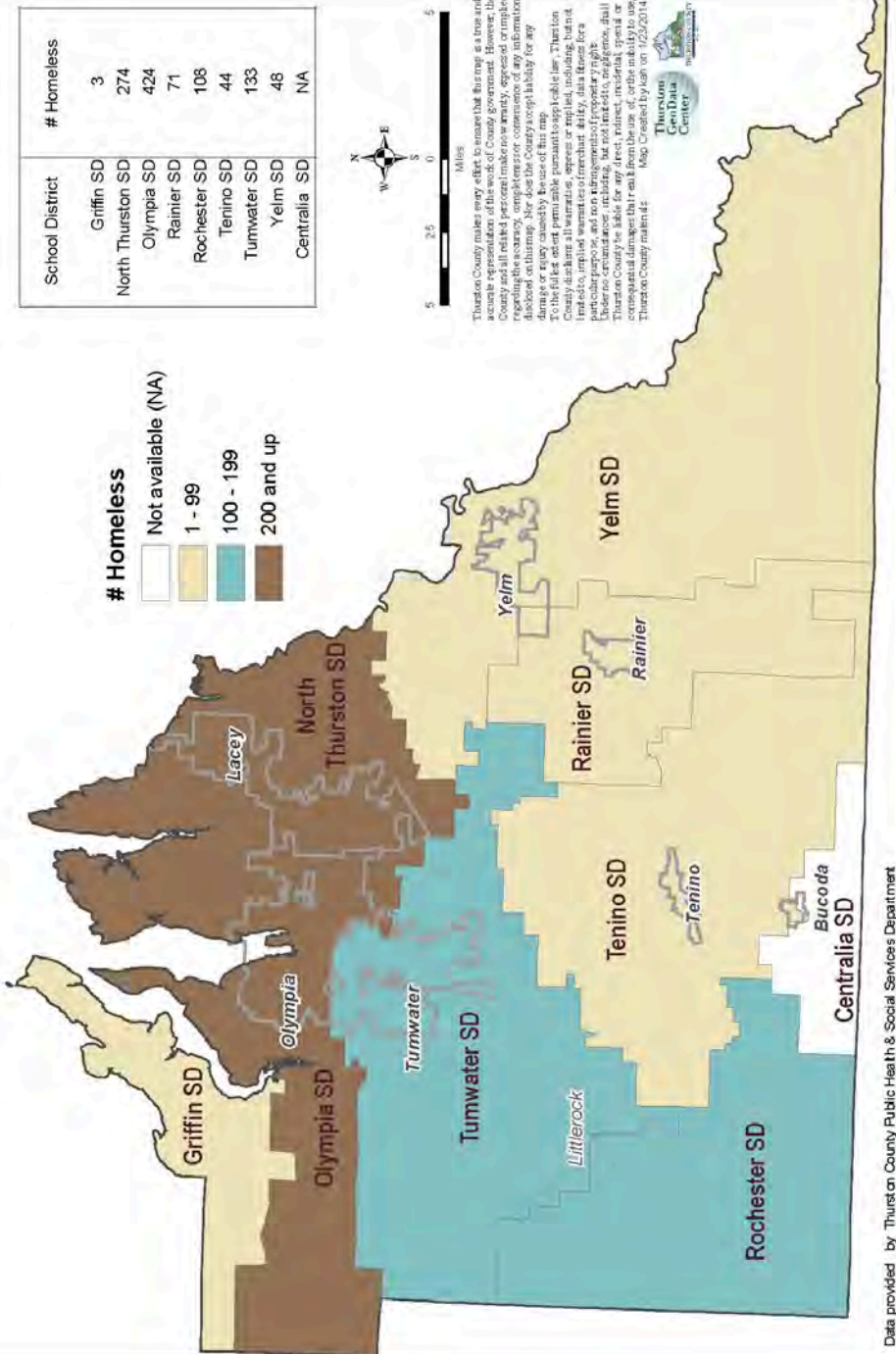
Number of Children in Home-Based Instruction by School District Boundary, Thurston County 2012-2013 School Year



of Homeschooled Students in 2012-2013 School Year
Thurston County = 1,053

Data Source: Office of Superintendent of Public Instruction

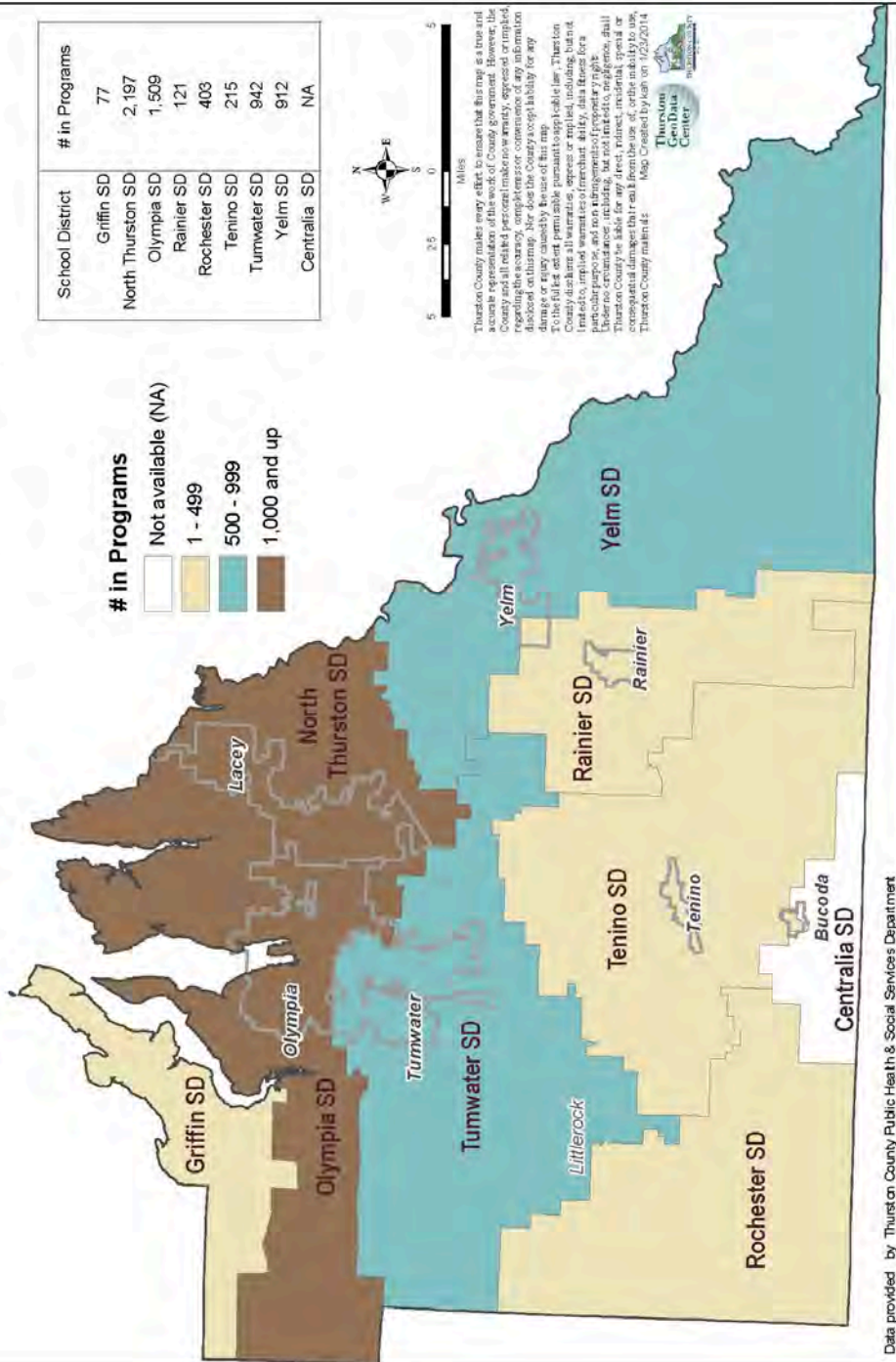
Number of Children Enrolled in Kindergarten to 12th Grade who are Homeless by School District, Thurston County 2011-2012 School Year



of Homeless Students in 2011-2012 School Year
Thurston County = 1,105

Data Source: Office of Superintendent of Public Instruction

Number of Children in Special Education or Section 504 Programs by School District, Thurston County 2013

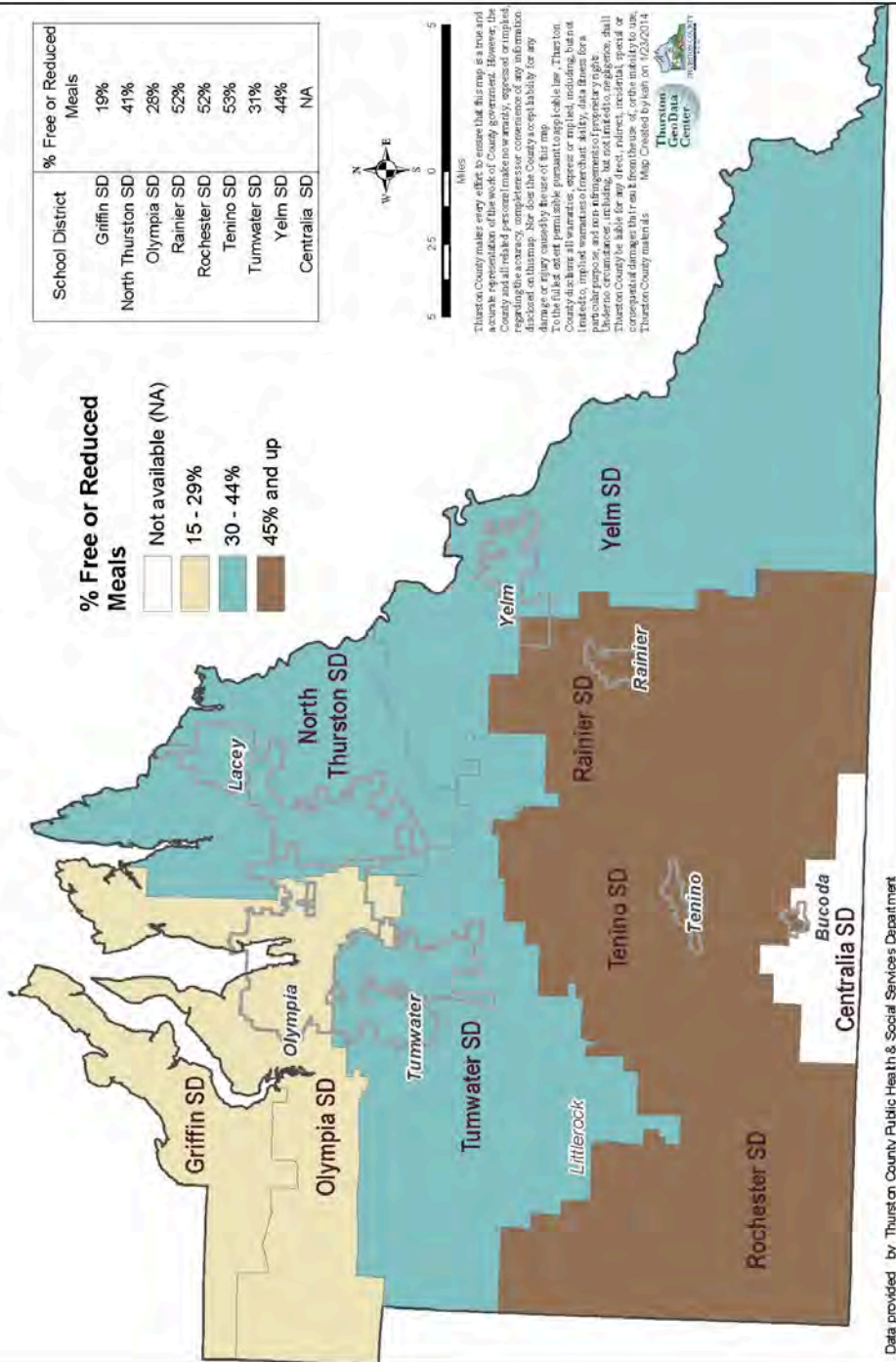


- Special Education serves children age preschool through 21 who have a disability that requires specially designed instruction to help the child progress in school.
- Section 504 serves school age children who have a disability that requires accommodations, but not specially designed instruction, to help the child participate in school.

Data Source: Office of Superintendent of Public Instruction, Washington State Report Card

<http://reportcard.ospi.k12.wa.us>

Percent of Students Enrolled in Free and Reduced Meal Program by School District, Thurston County 2012



% of Students Enrolled in the Free and Reduced Meal Program, October 2012
 Thurston County = 38%, Washington State = 46%

Data Source: Office of Superintendent of Public Instruction

CITATIONS.

- (1) Healthy People 2020 Leading Health Indicators: Social Determinants. 2013. United States Department of Health & Human Services. <http://healthypeople.gov/2020/LHI/socialDeterminants.aspx>
- (2) Issue Brief: Education Matters for Health. 2009. Robert Wood Johnson Foundation Commission to Build a Healthier America. www.commissiononhealth.org/Publications.aspx
- (3) Reframing School Dropout as a Public Health Issue. 2007. Preventing Chronic Disease. Centers for Disease Control and Prevention. www.cdc.gov/pcd/issues/2007/oct/07_0063.htm
- (4) Graduation and Dropout Statistics Annual Report 2011-12. 2013. Office of Superintendent of Public Instruction. www.k12.wa.us/DataAdmin/default.aspx
- (5) Health in Childhood and Adolescence and High School Dropout. 2010. University of California Santa Barbara, California Dropout Research Project. www.cdrp.ucsb.edu/pubs_reports.htm
- (6) Vulnerable Populations and the Transition to Adulthood. 2010. The Future of Children: Transition to Adulthood. Princeton University. www.futureofchildren.org/futureofchildren/publications/journals/
- (7) Youth Neither Enrolled in School or Working. 2013. Child Trends. www.childtrends.org/?indicators=youth-neither-enrolled-in-school-nor-working
- (8) Juvenile Justice and Delinquency Prevention: Risk and Protective Factors. 2012. Interagency Working Group on Youth Programs. www.findyouthinfo.gov/youth-topics/juvenile-justice/risk-and-protective-factors
- (9) American Community Survey. 2010-2012 Three Years Combined. United States Census Bureau. <http://factfinder2.census.gov/>
- (10) Testing Students in Washington State. 2014. Office of Superintendent of Public Instruction. www.k12.wa.us/assessment/StateTesting/default.aspx
- (11) Reading Proficiency. 2014. Child Trends. www.childtrends.org/?indicators=reading-proficiency
- (12) Mathematics Proficiency. 2013. Child Trends. www.childtrends.org/?indicators=mathematics-proficiency
- (13) Risk and Protection Profile for Substance Abuse Prevention in Thurston County. 2013. Washington State Department of Social and Health Services, Research and Data Analysis Division. www.dshs.wa.gov/rda/research/risk.shtm

Thurston County Public Health & Social Services Department
412 Lilly Road NE, Olympia, WA 98506
Phone: 360-867-2500, Fax: 360-867-2601
TDD: 1-800-658-6384
Website: www.co.thurston.wa.us/health
Twitter: @ThurstonHealth