

2/7/2020

** NOTICE: This health alert provides written guidance for health care professionals and others who may need to take action to prevent or control a notifiable condition. It is not intended to provide guidance for the general public.*

Novel Coronavirus (2019-nCoV) Respiratory Infection

Requested Actions

- 1) Assess patients presenting to healthcare facilities for exposures associated with risk of 2019-nCoV infections <https://www.cdc.gov/coronavirus/2019-nCoV/hcp/clinical-criteria.html>
 - **Fever and symptoms** of lower respiratory infection, such as cough or shortness of breath **(AND)**
 - **Travel to mainland China within 14 days of symptom onset (OR)**
 - **Close contact with a person confirmed with 2019-nCoV infection**
- 2) If patient meets both exposure and illness criteria, and to minimize the risk of exposing others:
 - **Place surgical mask on patient** as soon as identified
 - **Isolate patient** in a private room, airborne infection isolation room (AIIR) if available with the door closed or in a separate area with at least 6 feet of separation from other persons.
 - **Healthcare providers entering the room should use contact, droplet, AND airborne precautions and use eye protection (goggles or a face shield)**
<https://www.cdc.gov/coronavirus/2019-nCoV/hcp/infection-control.html>
- 3) **Collect and perform any clinically indicated respiratory and other diagnostic tests including (viral respiratory pathogens panel and influenza A and B).** The signs and symptoms of 2019-nCoV overlap with those associated with other viral respiratory tract infections. CDC recommends collecting and testing upper respiratory (nasopharyngeal AND oropharyngeal swabs and low respiratory (sputum if possible – induction is not indicated) for the initial diagnostic testing for 2019-nCoV. **Specimens for 2019-nCoV testing must be approval by the health department before submission.**
- 4) **Immediately notify your facility's infection control personnel and contact Thurston County Public Health and Social Services Department** at 360-867-2500 during business hours to report at risk patients and assess need to collect specimens to test for 2019-nCoV.

We will monitor individuals meeting CDC/DOH screening and monitoring criteria. When we have completed our initial interview, we will notify the provider indicated as the individual's healthcare provider that we are monitoring their patient.

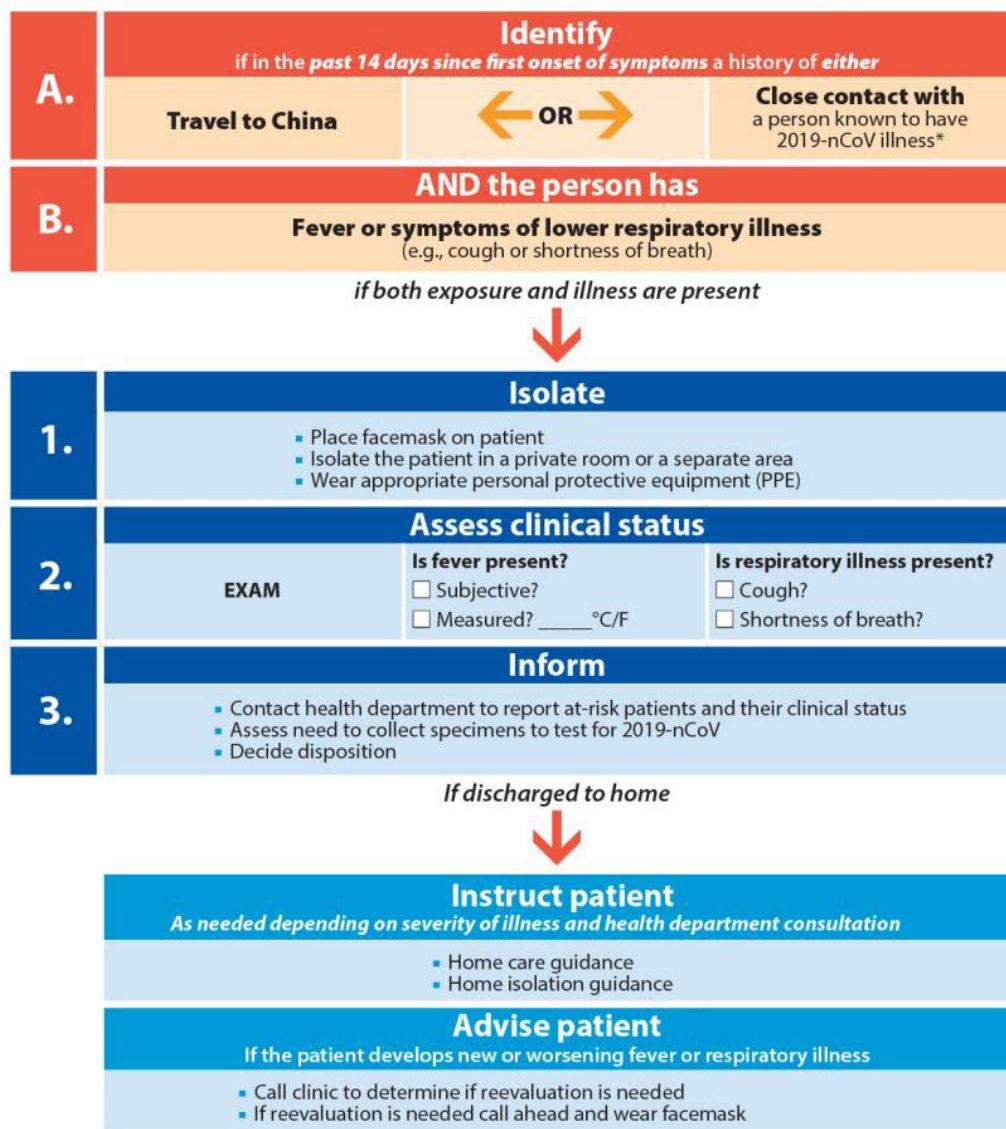
Recommendations for screening patients for possible 2019-nCoV infection are based on the current knowledge of the characteristics of clinical illness observed in early cases, and the geographic distribution of current cases. They reflect the current public health goal of rapidly containing and preventing transmission of 2019-nCoV illness.

2/7/2020

CDC has developed assessment tools to allow health care providers to make decisions about appropriate infection control and management of patients.

Flowchart to Identify and Assess 2019 Novel Coronavirus

For the evaluation of patients who may be ill with or who may have been exposed to 2019 Novel Coronavirus (2019-nCoV)



* Documentation of laboratory-confirmation of 2019-nCoV may not be possible for travelers or persons caring for patients in other countries. For more clarification on the definition for close contact see CDC's Interim Guidance for Healthcare Professionals: www.cdc.gov/coronavirus/2019-nCoV/hcp/clinical-criteria.html

2/7/2020

Background

Public Health continues to closely monitor an outbreak of respiratory illness caused by a novel coronavirus (2019-nCoV) initially detected in Wuhan City, Hubei Province, China in December 2019. Washington State has 1 confirmed case with other persons being tested and monitored. We currently have no cases in Thurston County.

This CD Update provides a situational update and interim guidance for clinicians caring for patients with 2019-nCoV <https://www.cdc.gov/coronavirus/2019-ncov/hcp/clinical-guidance-management-patients.html>, for the evaluation and testing of patients under investigation (PUIs) for 2019-nCoV <https://www.cdc.gov/coronavirus/2019-nCoV/hcp/clinical-criteria.html>, and updated infection prevention and control guidance specific to 2019-nCoV <https://www.cdc.gov/coronavirus/2019-nCoV/hcp/infection-control.html>.

Early in the outbreak, many of the patients with respiratory illness caused by 2019-nCoV in China had exposure to a large seafood and live animal market, suggesting animal-to-human transmission. More recently, cases have been confirmed with no exposure to animal markets, indicating that person-to-person spread of the virus has occurred. Chinese officials report that sustained person-to-person spread in the community is occurring in China.

The first US case-patient was identified on January 21, 2020 in Snohomish County, and had recently traveled from Wuhan, China. Since that time, 11 additional cases have been confirmed in 6 states in the United States. Globally, reported illnesses in people with 2019-nCoV have ranged from mild (no or few signs and symptoms), to severe, including death. These findings are consistent with other coronaviruses, including Severe Acute Respiratory Syndrome (SARS) <https://www.cdc.gov/sars/> and Middle East Respiratory Syndrome (MERS) <https://www.cdc.gov/coronavirus/mers/index.html>. Additional information about 2019-nCoV is needed to better understand transmission, disease severity, and risk to the general population. The goal of the ongoing US public health response is to identify and contain this outbreak and prevent sustained spread of 2019-nCoV in the US.

Resources – *Periodically refresh your browser to assure you receive the most up to date information*

CDC - Flowchart to Identify and Assess 2019 Novel Coronavirus
<https://www.cdc.gov/coronavirus/2019-ncov/hcp/identify-assess-flowchart.html>

CDC Situation Summary page - <https://www.cdc.gov/coronavirus/2019-ncov/index.html>

WA DOH - Novel Coronavirus Outbreak General Information
<https://www.doh.wa.gov/Emergencies/Coronavirus>

WA DOH - Interim Infection Control Guidance for Prehospital Emergency Medical Services (EMS)
<https://www.doh.wa.gov/Portals/1/Documents/1600/InfectionControlforPrehospitalEMS2019-nCoV.pdf>

CDC Information for Healthcare Professionals
<https://www.cdc.gov/coronavirus/2019-nCoV/guidance-hcp.html>

WA DOH/CDC - Healthcare Infection Prevention Guidance (CDC)
<https://www.cdc.gov/coronavirus/2019-nCoV/hcp/infection-control.html>

WA DOH - Specimen collection and submission information
<https://www.doh.wa.gov/ForPublicHealthandHealthcareProviders/PublicHealthLaboratories/MicrobiologyLabTestMenu>



2/7/2020

WA DOH - Information for School Nurses and Administrators DOH
<https://www.doh.wa.gov/Emergencies/Coronavirus/Schools>

CDC Interim Guidance for Preventing Transmission in Homes and Communities
<https://www.cdc.gov/coronavirus/2019-ncov/guidance-prevent-spread.html>

CDC Guidance for Travelers - <https://wwwnc.cdc.gov/travel/notices/watch/novel-coronavirus-china>

Forms, Checklists, and Posters

CDC - Healthcare Professional Preparedness Checklist For Transport and Arrival of Patients Potentially Infected with 2019-nCoV <https://www.cdc.gov/coronavirus/2019-ncov/hcp/hcp-personnel-checklist.html>

CDC - Hospital Preparedness Checklist <https://www.cdc.gov/coronavirus/2019-ncov/hcp/hcp-hospital-checklist.html>

CDC Interim 2019 novel coronavirus (2019-nCoV) patient under investigation (PUI) form - <https://www.cdc.gov/coronavirus/2019-ncov/downloads/pui-form.pdf>

WA DOH Healthcare Provider patient evaluation form - <https://www.doh.wa.gov/Portals/1/Documents/1600/Interim-2019NovelCoronavirusQuicksheetProviders.pdf>

WA DOH - Healthcare Personnel Tracking Form <https://www.doh.wa.gov/Portals/1/Documents/1600/HCPTTrackingForm2019-nCoV.pdf>

WA DOH - Waiting Room Posters <https://www.doh.wa.gov/Portals/1/Documents/Pubs/420-277-Coronavirus-poster-8.5x11.pdf>

WA DOH - Novel Coronavirus Fact Sheet <https://www.doh.wa.gov/Portals/1/Documents/1600/NovelCoronavirusFactSheet.pdf>

WA DOH - Washington State Hospital Association Isolation Sign for nCoV <https://www.doh.wa.gov/Portals/1/Documents/1600/AirborneRespiratorContactPrecautionSign-nCoV.PDF>

THANK YOU FOR REPORTING - WE COULD NOT DO THIS WORK WITHOUT YOU

TO REPORT A NOTIFIABLE CONDITION IN THURSTON COUNTY	
Voice mail for reporting non-immediately reportable conditions (24 hours a day)	Phone: 360-786-5470 Fax: 360-867-2601
Day time immediately reportable conditions – Call detailed information to the 24-hour Notifiable Condition Reporting Line at 360-786-5470. Messages are picked up hourly. If a call back can't wait call 360-867-2500 and ask staff to locate a Communicable Disease staff.	Phone: 360-786-5470
After hours immediately and 24-hour reportable conditions or a public health emergency	Call 911 and ask staff to locate the Administrator-On-Call.
No one is available with Thurston County Public Health and condition is immediately notifiable	1-877-539-4344

Communicable Disease Updates are posted online at: <http://bit.ly/CDUpdatePHSS>