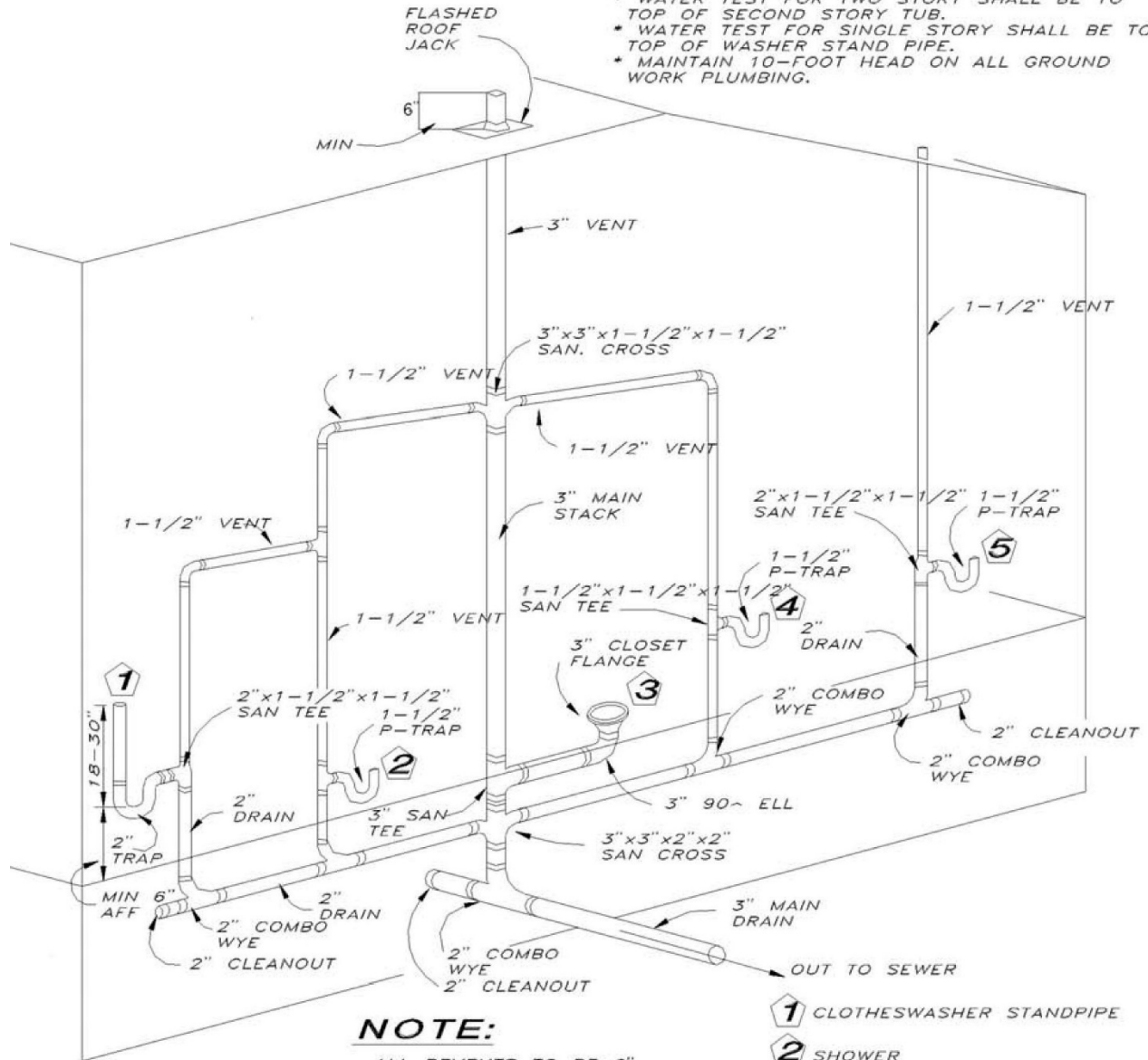




TC Figure 40 Plumbing Drain and Waste

DRAIN WASTE AND VENT TESTING

- * WATER TEST FOR TWO STORY SHALL BE TO TOP OF SECOND STORY TUB.
- * WATER TEST FOR SINGLE STORY SHALL BE TO TOP OF WASHER STAND PIPE.
- * MAINTAIN 10-FOOT HEAD ON ALL GROUND WORK PLUMBING.



NOTE:

ALL REVENTS TO BE 6" ABOVE HIGEST WATER LEVEL IN HOUSE (NORMALLY 6" ABOVE KITCHEN SINK)
DRAINS MUST HAVE 1/4" FALL PER. FOOT

- 1** CLOTHESWASHER STANDPIPE
- 2** SHOWER
- 3** WATER CLOSET
- 4** LAVATORY
- 5** KITCHEN SINK