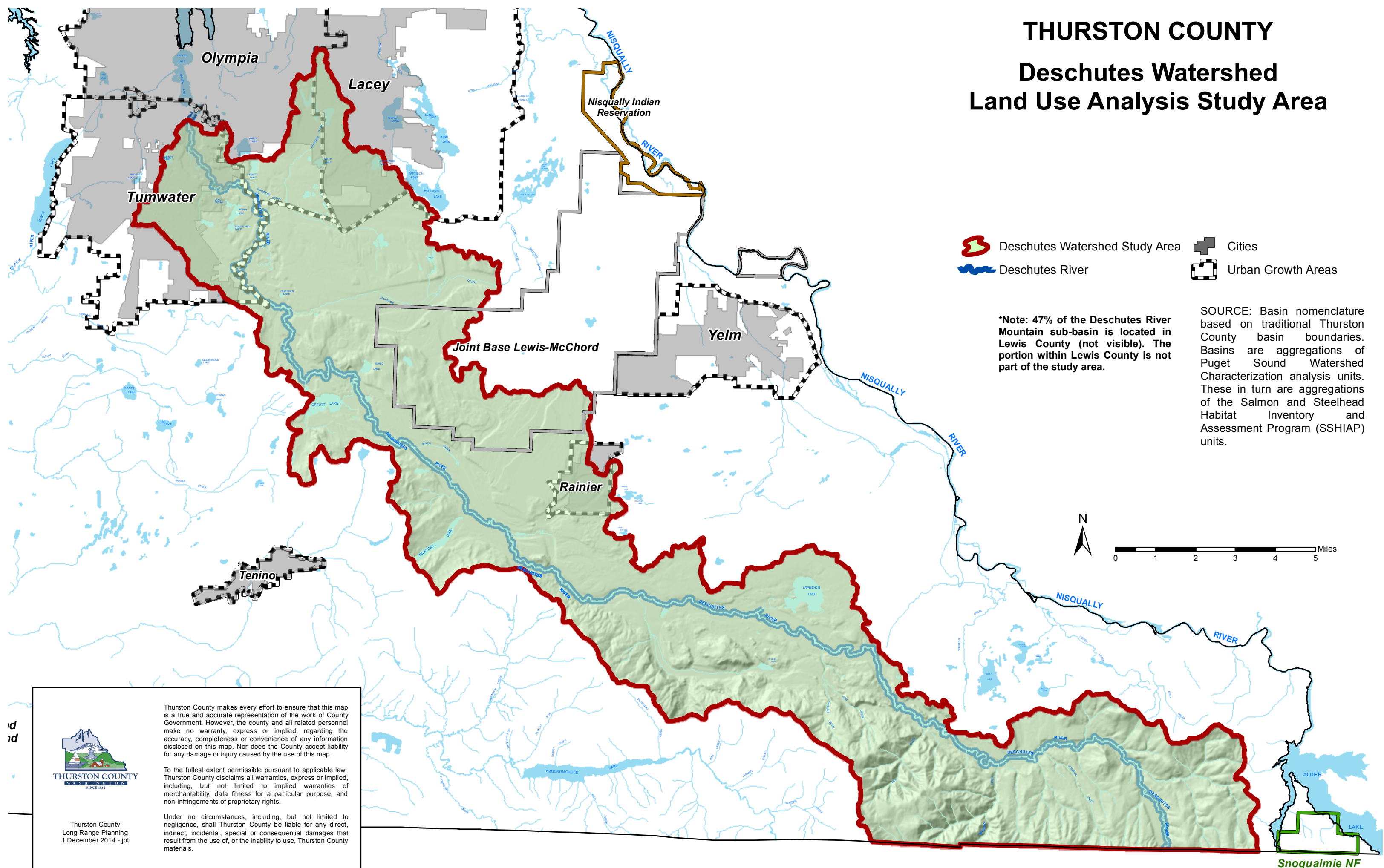






THURSTON COUNTY

Deschutes Watershed

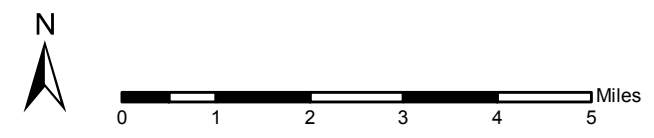
Land Use Analysis Study Area




-  Deschutes Watershed Study Area
-  Deschutes River
-  Cities
-  Urban Growth Areas

***Note:** 47% of the Deschutes River Mountain sub-basin is located in Lewis County (not visible). The portion within Lewis County is not part of the study area.

SOURCE: Basin nomenclature based on traditional Thurston County basin boundaries. Basins are aggregations of Puget Sound Watershed Characterization analysis units. These in turn are aggregations of the Salmon and Steelhead Habitat Inventory and Assessment Program (SSHAP) units.





Thurston County
Long Range Planning
1 December 2014 - jbt

Thurston County makes every effort to ensure that this map is a true and accurate representation of the work of County Government. However, the county and all related personnel make no warranty, express or implied, regarding the accuracy, completeness or convenience of any information disclosed on this map. Nor does the County accept liability for any damage or injury caused by the use of this map.

To the fullest extent permissible pursuant to applicable law, Thurston County disclaims all warranties, express or implied, including, but not limited to implied warranties of merchantability, data fitness for a particular purpose, and non-infringements of proprietary rights.

Under no circumstances, including, but not limited to negligence, shall Thurston County be liable for any direct, indirect, incidental, special or consequential damages that result from the use of, or the inability to use, Thurston County materials.

Snoqualmie NF